

cogent™

**FRIESIAN**  
CATALOGUE  
SPRING 2018



BREEDING INNOVATION

[www.cogentuk.com](http://www.cogentuk.com)





# FRIESIAN CATALOGUE SPRING 2018

	<b>INDEX</b>		
<b>4</b>	Bombardier	<b>8</b>	Leonard
<b>5</b>	Flynn	<b>9</b>	Lord
<b>6</b>	Joseph	<b>10</b>	Number One
<b>7</b>	Jupiter	<b>11</b>	Paterson
		<b>12</b>	Patrick
		<b>13</b>	Penrod
		<b>14</b>	Premier
		<b>15</b>	Regal
		<b>16</b>	Robert
		<b>17</b>	Monarch

**Welcome to the February edition of the Cogent Friesian catalogue.**

With the introduction of NEW innovative technology from ST Genetics, we are able to offer Cogent Sexed Semen 4M, the most advanced sex-sorted semen available with twice as many female sperm cells than any sexed straw on the market. We offer a wide range of top quality proven Friesian sires, and an impressive selection of well-bred young Friesian sires. Our objective is to breed profitable cows which are efficient, fertile, robust and most importantly productive.

There is no doubt that the Friesian provides a profitable choice for many farmers!



# Aintree BOMBARDIER

SEXED  
ULTRA  
4+

HIGH  
FERTILITY

HIGH  
MILK

CALVING  
EASE

Patrol x Quentin x Frans  
HBN: 20706793103324 AI Code: BF1125  
Breed: 98% Friesian aAa: 564  
Dam Gatrog Quentin Babs BFV85 2nd Dam Lakemead Barbara 160- BFE90



# Coolmohan FLYNN

SEXED  
SEMEN

CALVING  
EASE

OUTCROSS

HIGH  
COMPS.

Ballynagragha Nautical 19 x Lysell Image x Reary Norton  
HBN: IE151548591442 AI Code: BF1072  
Breed: 18% HOL 82% FR aAa: 531  
Dam: Coolmohan Rebecca Image 1 EX92 2nd Dam Coolmohan Rebecca 3 EX90



DAM COOLMOHAN REBECCA IMAGE 1 EX92

	-2	-1	0	1	2	
UK Type Merit			0.74			Excellent
Udder Comp			0.69			Excellent
Feet and Legs			0.82			Excellent
Stature			0.65			160cm
Chest Width			0.86			Wide
Body Depth			0.75			Deep
Angularity			0.65			Open Rib
Rump Angle			-0.20			High Pins
Rump Width			0.96			Wide
Rear Leg Side			-1.45			Straight
Foot Angle			1.62			Steep
F.Udder Attach			0.23			Tight
R. Udder Height			0.68			Very High
Udder Support			0.72			Strong
Udder Depth			-0.18			Deep
F.Teat Placement			0.65			Close
Teat Length			0.51			Long
R.Teat Placement			1.21			Close
Teat Pos Side			0.70			Apart
Locomotion			0.92			Excellent

UK DTRS 0 UK HERDS 0  
SOURCE UK | PLI Rel% 65

MILK kgs	REL %
264	69
FAT kgs	FAT %
10.2	-0.01
PROT kgs	PROT %
9.2	0.01
PLI £	SCI £
222	215

Fertility Index	4.3	Improver
Lifespan	0.2	Improver
Calving Ease	1	Easy
Milking Speed	0.14	Improver
Temperament	1.16	Excellent
Somatic Cell	5	Non.Imp
Condition Score	-0.23	Low
Maintenance	10	High
Mastitis	N/A	N/A

UK Daughters in UK Herds | 0 Dtrs 0 Herds 56% Rel

	-2	-1	0	1	2	
UK Type Merit			-0.15			Poor
Udder Comp			-0.07			Poor
Feet and Legs			-0.20			Poor
Stature			0.54			160cm
Chest Width			-0.95			Narrow
Body Depth			0.06			Deep
Angularity			0.91			Open Rib
Rump Angle			-0.07			High Pins
Rump Width			-0.24			Narrow
Rear Leg Side			0.19			Sickled
Foot Angle			-0.62			Low
F.Udder Attach			-0.43			Loose
R. Udder Height			0.21			Very High
Udder Support			-0.04			Broken
Udder Depth			0.01			Shallow
F.Teat Placement			-0.16			Outside
Teat Length			0.03			Long
R.Teat Placement			-0.33			Apart
Teat Pos Side			0.61			Apart
Locomotion			-0.48			Poor

UK DTRS 0 UK HERDS 0  
SOURCE UK | PLI Rel% 59

MILK kgs	REL %
-299	63
FAT kgs	FAT %
-2.8	0.15
PROT kgs	PROT %
0.1	0.16
PLI £	SCI £
19	58

Fertility Index	-2.3	Non.Imp
Lifespan	-0.2	Non.Imp
Calving Ease	0.9	Easy
Milking Speed	0.70	Good
Temperament	0.40	Excellent
Somatic Cell	8	Non.Imp
Condition Score	-1.60	Low
Maintenance	-13	Low
Mastitis	-2	Improver

UK Daughters in UK Herds | 0 Dtrs 0 Herds 48% Rel

Type data supplied by Holstein UK. Production and fitness data supplied by AHDB.

Type data supplied by Holstein UK. Production and fitness data supplied by AHDB.

# Goonhilly JOSEPH

SEXED SEMEN  
 HIGH FERTILITY  
 HIGH PLI  
 HIGH COMPS.

Chad x Hylke x Glen Albyn  
 HBN: 20387868200718 AI Code: BF1130  
 Breed: 98% Friesian aAa: 1.53  
 Dam Goonhilly Hyl Yasmin BFE92 4E 2nd Dam Goonhilly Glen Yasmin BFE93 5E



Dam Goonhilly Hyl Yasmin BFE92 4E

	-2	-1	0	1	2	
UK Type Merit						0.58 Excellent
Udder Comp						0.53 Excellent
Feet and Legs						0.76 Excellent
Stature						0.28 160cm
Chest Width						0.32 Wide
Body Depth						0.46 Deep
Angularity						0.40 Open Rib
Rump Angle						-0.59 High Pins
Rump Width						0.18 Wide
Rear Leg Side						-0.49 Straight
Foot Angle						0.02 Steep
F.Udder Attach						0.04 Tight
R. Udder Height						0.42 Very High
Udder Support						0.63 Strong
Udder Depth						0.04 Shallow
F.Teat Placement						-0.15 Outside
Teat Length						0.17 Long
R.Teat Placement						0.75 Close
Teat Pos Side						0.84 Apart
Locomotion						0.88 Excellent

UK DTRS 0 UK HERDS 0  
SOURCE UK | PLI Rel% 64

MILK kgs	REL %
-175	68
FAT kgs	FAT %
11.2	0.26
PROT kgs	PROT %
8	0.2
PLI £	SCI £
378	362

Fertility Index	4.6	Improver
Lifespan	0.2	Improver
Calving Ease	1.6	Easy
Milking Speed	0.46	Improver
Temperament	0.40	Excellent
Somatic Cell	-8	Improver
Condition Score	-0.32	Low
Maintenance	4	High
Mastitis	N/A	N/A

UK Daughters in UK Herds | 0 Dtrs 0 Herds 55% Rel

# Kirkby JUPITER RDC

SEXED ULTRA 44  
 HIGH TYPE  
 CALVING EASE  
 HIGH PLI

Centurion x Emperor x Beta  
 HBN: 2000000654275 AI Code: BF1042  
 Breed: 95% Friesian aAa: 531  
 Dam Kirkby Jay 30 BFE90 2nd Dam Kirkby Jay 17 BFE90 2E



Dam Kirkby Jay 30 BFE90

	-2	-1	0	1	2	
UK Type Merit						2.30 Excellent
Udder Comp						2.31 Excellent
Feet and Legs						1.57 Excellent
Stature						0.68 160cm
Chest Width						-0.11 Narrow
Body Depth						1.31 Deep
Angularity						1.81 Open Rib
Rump Angle						-0.35 High Pins
Rump Width						0.45 Wide
Rear Leg Side						0.08 Sickled
Foot Angle						-0.02 Low
F.Udder Attach						1.27 Tight
R. Udder Height						2.26 Very High
Udder Support						1.46 Strong
Udder Depth						0.04 Shallow
F.Teat Placement						1.13 Close
Teat Length						-0.80 Short
R.Teat Placement						0.67 Close
Teat Pos Side						1.77 Apart
Locomotion						1.73 Excellent

UK DTRS 73 UK HERDS 39  
SOURCE UK | PLI Rel% 75

MILK kgs	REL %
-39	92
FAT kgs	FAT %
6.6	0.1
PROT kgs	PROT %
5.4	0.08
PLI £	SCI £
362	319

Fertility Index	2.5	Improver
Lifespan	0.5	Improver
Calving Ease	1.1	Easy
Milking Speed	1.29	Improver
Temperament	-0.79	Poor
Somatic Cell	-2	Improver
Condition Score	-0.98	Low
Maintenance	3	High
Mastitis	N/A	N/A

UK Daughters in UK Herds | 27 Dtrs 20 Herds 65% Rel

# Skyhigh LEONARD

✓ SEXED SEMEN
✓ HIGH COMPS.
✓ CALVING EASE
✓ HIGH MILK

Adema 186 x Glen Albyn x Doraman  
 HBN: 20000000659371 AI Code: BF1066  
 Breed: 99% Friesian aAa: 456  
 Dam Blackisle Laura 59 BFE92 2nd Dam Blackisle Laura 27 BFE90



	-2	-1	0	1	2	
UK Type Merit					0.76	Excellent
Udder Comp					0.85	Excellent
Feet and Legs					0.50	Excellent
Stature					0.65	160cm
Chest Width					0.00	Wide
Body Depth					0.61	Deep
Angularity					0.85	Open Rib
Rump Angle					-1.16	High Pins
Rump Width					1.10	Wide
Rear Leg Side					-1.56	Straight
Foot Angle					1.29	Steep
F.Udder Attach					-0.34	Loose
R. Udder Height					0.48	Very High
Udder Support					0.69	Strong
Udder Depth					0.06	Shallow
F.Teat Placement					0.77	Close
Teat Length					-0.50	Short
R.Teat Placement					1.07	Close
Teat Pos Side					0.77	Apart
Locomotion					0.28	Excellent

UK DTRS 33 UK HERDS 17  
 SOURCE UK | PLI Rel% 75

MILK kgs	REL %
237	87
FAT kgs	FAT %
14.4	0.06
PROT kgs	PROT %
10	0.03
PLI £	SCI £
212	218

Fertility Index	1	Improver
Lifespan	0	Non.Imp
Calving Ease	1.3	Easy
Milking Speed	0.56	Improver
Temperament	1.09	Excellent
Somatic Cell	1	Non.Imp
Condition Score	-1.02	Low
Maintenance	4	High
Mastitis	N/A	N/A

UK Daughters in UK Herds | 0 Dtrs 0 Herds 58% Rel

# Skyhigh LORD

✓ FEET & LEGS
✓ HIGH COMPS.
✓ HIGH FERTILITY
✓ EASY CALVING

AVAILABLE IN  
 MAINLAND UK ONLY

Glen Albyn x Breadwin x Desert Orchid  
 HBN: 20000000644596 AI Code: BF1005  
 Breed: 99% Friesian aAa: 465  
 Dam Blackisle Laura 19 BFE92 2E 2nd Dam Blackisle Laura 9 BFV85



BROCKTON-GRANGE LORD 439

	-2	-1	0	1	2	
UK Type Merit					1.02	Excellent
Udder Comp					0.60	Excellent
Feet and Legs					1.82	Excellent
Stature					0.13	160cm
Chest Width					-1.57	Narrow
Body Depth					-0.88	Shallow
Angularity					1.02	Open Rib
Rump Angle					0.13	Low Pins
Rump Width					0.15	Wide
Rear Leg Side					-0.73	Straight
Foot Angle					1.11	Steep
F.Udder Attach					-0.21	Loose
R. Udder Height					1.02	Very High
Udder Support					1.54	Strong
Udder Depth					0.06	Shallow
F.Teat Placement					0.19	Close
Teat Length					0.76	Long
R.Teat Placement					0.58	Close
Teat Pos Side					0.38	Apart
Locomotion					2.01	Excellent

UK DTRS 220 UK HERDS 80  
 SOURCE UK | PLI Rel% 87

MILK kgs	REL %
6	97
FAT kgs	FAT %
8.3	0.1
PROT kgs	PROT %
1.4	0.01
PLI £	SCI £
274	301

Fertility Index	2	Improver
Lifespan	0.2	Improver
Calving Ease	3.1	Easy
Milking Speed	-0.15	Below Aver
Temperament	0.96	Excellent
Somatic Cell	-15	Improver
Condition Score	-1.71	Low
Maintenance	-12	Low
Mastitis	-5	Improver

UK Daughters in UK Herds | 82 Dtrs 45 Herds 83% Rel

Type data supplied by Holstein UK. Production and fitness data supplied by AHDB.

Type data supplied by Holstein UK. Production and fitness data supplied by AHDB.

# Inch NUMBER ONE BFE92

✓ SEXED SEMEN
✓ HIGH COMPS.
✓ HIGH MILK
✓ HIGH TYPE

Osbert x Glen Albyn x Sem  
 HBN: 20000000660457 AI Code: BF1062  
 Breed: 88% Friesian aAa: 546  
 Dam Inch Blackisle Daphne 2 EX92 5E 2nd Dam Inch Sem Daphne 2 VG88



DAM INCH BLACKISLE DAPHNE 2 EX91

	-2	-1	0	1	2	
UK Type Merit						1.00 Excellent
Udder Comp						1.00 Excellent
Feet and Legs						0.96 Excellent
Stature						1.06 160cm
Chest Width						-0.49 Narrow
Body Depth						0.71 Deep
Angularity						1.86 Open Rib
Rump Angle						-0.68 High Pins
Rump Width						1.92 Wide
Rear Leg Side						-0.24 Straight
Foot Angle						0.25 Steep
F.Udder Attach						-0.33 Loose
R. Udder Height						1.10 Very High
Udder Support						0.96 Strong
Udder Depth						-0.03 Deep
F.Teat Placement						0.65 Close
Teat Length						0.29 Long
R.Teat Placement						0.63 Close
Teat Pos Side						0.61 Apart
Locomotion						0.41 Excellent

UK Daughters in UK Herds | 0 Dtrs 0 Herds 57% Rel

UK DTRS 0 UK HERDS 0  
 SOURCE UK | PLI Rel% 66

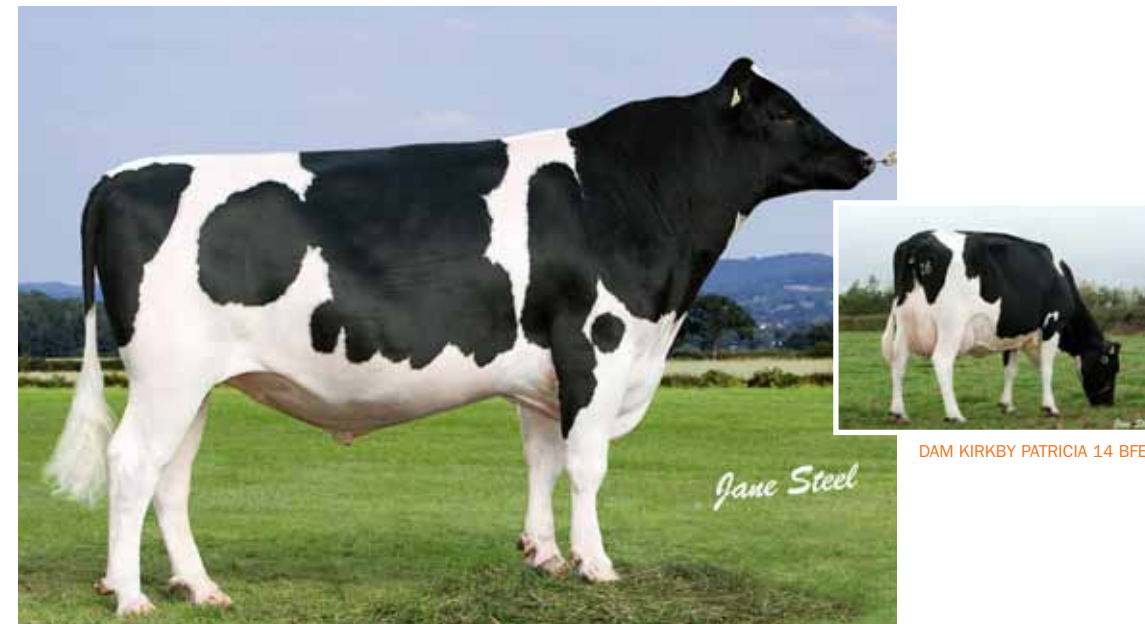
MILK kgs	REL %
273	69
FAT kgs	FAT %
22	0.15
PROT kgs	PROT %
12	0.04
PLI £	SCI £
226	223

Fertility Index	-2.9	Non.Imp
Lifespan	0	Non.Imp
Calving Ease	0.8	Easy
Milking Speed	-0.06	Non. Imp
Temperament	0.62	Excellent
Somatic Cell	8	Non.Imp
Condition Score	-1.99	Low
Maintenance	2	High
Mastitis	N/A	N/A

# Kirkby PATERSON

✓ SEXED SEMEN
✓ HIGH MILK
✓ EASY CALVING

Jayson x Emperor x Mr Frosty  
 HBN: 20000000654102 AI Code: BF1041  
 Breed: 91% Friesian aAa: 531  
 Dam Kirkby Patricia 14 BFE90 2nd Dam Kirkby Patricia 12 BFE94 2E



DAM KIRKBY PATRICIA 14 BFE 90

	-2	-1	0	1	2	
UK Type Merit						0.42 Excellent
Udder Comp						0.81 Excellent
Feet and Legs						-0.31 Poor
Stature						1.46 160cm
Chest Width						-1.04 Narrow
Body Depth						1.12 Deep
Angularity						2.37 Open Rib
Rump Angle						0.99 Low Pins
Rump Width						0.34 Wide
Rear Leg Side						1.27 Sickled
Foot Angle						-1.23 Low
F.Udder Attach						0.70 Tight
R. Udder Height						1.19 Very High
Udder Support						-0.98 Broken
Udder Depth						0.68 Shallow
F.Teat Placement						0.55 Close
Teat Length						0.40 Long
R.Teat Placement						-0.07 Apart
Teat Pos Side						-0.23 Close
Locomotion						-1.03 Poor

UK Daughters in UK Herds | 17 Dtrs 11 Herds 58% Rel

UK DTRS 83 UK HERDS 41  
 SOURCE UK | PLI Rel% 71

MILK kgs	REL %
445	92
FAT kgs	FAT %
12.7	-0.07
PROT kgs	PROT %
16.5	0.02
PLI £	SCI £
185	16

Fertility Index	-7	Non.Imp
Lifespan	0.1	Improver
Calving Ease	1.4	Easy
Milking Speed	1.12	Good
Temperament	0.47	Excellent
Somatic Cell	1	Non.Imp
Condition Score	-2.38	Low
Maintenance	0	Low
Mastitis	-2	Improver

# Aintree PATRICK

✓ EASY CALVING
✓ HIGH TYPE
✓ HIGH COMPS.
✓ SCC

Garve x Glen Albyn x Panatella  
 HBN: 20706793203178 AI Code: BF1101  
 Breed: 98% Friesian aAa: 513  
 Dam Blackisle Pauline 71 EX95 6E 2nd Dam Blackisle Pauline 52 BFE90



DAM BLACKISLE PAULINE 71 BFE95 63

	-2	-1	0	1	2	
UK Type Merit						1.79 Excellent
Udder Comp						1.54 Excellent
Feet and Legs						1.77 Excellent
Stature						1.17 160cm
Chest Width						0.22 Wide
Body Depth						0.74 Deep
Angularity						1.03 Open Rib
Rump Angle						-0.66 High Pins
Rump Width						1.12 Wide
Rear Leg Side						-1.20 Straight
Foot Angle						1.80 Steep
F.Udder Attach						1.53 Tight
R. Udder Height						0.97 Very High
Udder Support						0.90 Strong
Udder Depth						1.95 Shallow
F.Teat Placement						0.80 Close
Teat Length						0.04 Long
R.Teat Placement						0.92 Close
Teat Pos Side						0.19 Apart
Locomotion						1.45 Excellent

UK DTRS 0 UK HERDS 0  
 SOURCE UK | PLI Rel% 65

MILK kgs	REL %
-29	69
FAT kgs	FAT %
4.9	0.09
PROT kgs	PROT %
2.9	0.05
PLI £	SCI £
194	210

Fertility Index	0	Improver
Lifespan	0.1	Improver
Calving Ease	1.1	Easy
Milking Speed	0.23	Improver
Temperament	0.77	Excellent
Somatic Cell	-13	Improver
Condition Score	-0.66	Low
Maintenance	9	High
Mastitis	N/A	N/A

UK Daughters in UK Herds | 0 Dtrs 0 Herds 57% Rel

# Aintree PENROD

SEXED ULTRA 44
✓ HIGH PLI
✓ HIGH TYPE
✓ HIGH COMPS.

Hilton x Glen Albyn x Panatella  
 HBN: 20706793503286 AI Code: BF1124  
 Breed: 97% Friesian aAa: 543  
 Dam Blackisle Pauline 71 EX95 6E 2nd Dam Blackisle Pauline 52 BFE90



DAM BLACKISLE PAULINE 71 BFE95 63

	-2	-1	0	1	2	
UK Type Merit						1.09 Excellent
Udder Comp						1.06 Excellent
Feet and Legs						0.91 Excellent
Stature						0.30 160cm
Chest Width						0.49 Wide
Body Depth						0.56 Deep
Angularity						0.71 Open Rib
Rump Angle						-0.51 High Pins
Rump Width						0.59 Wide
Rear Leg Side						-1.41 Straight
Foot Angle						0.85 Steep
F.Udder Attach						0.14 Tight
R. Udder Height						0.86 Very High
Udder Support						0.60 Strong
Udder Depth						-0.22 Deep
F.Teat Placement						0.81 Close
Teat Length						0.69 Long
R.Teat Placement						0.87 Close
Teat Pos Side						1.67 Apart
Locomotion						0.66 Excellent

UK DTRS 0 UK HERDS 0  
 SOURCE UK | PLI Rel% 65

MILK kgs	REL %
0	69
FAT kgs	FAT %
7.8	0.11
PROT kgs	PROT %
6.2	0.09
PLI £	SCI £
238	249

Fertility Index	0.1	Improver
Lifespan	0.2	Improver
Calving Ease	1.2	Easy
Milking Speed	0.18	Improver
Temperament	1.10	Excellent
Somatic Cell	-11	Improver
Condition Score	-0.21	Low
Maintenance	4	High
Mastitis	N/A	N/A

UK Daughters in UK Herds | 0 Dtrs 0 Herds 58% Rel

# Kirkby PREMIER BFV87

Benloyal x Mr Frosty x Arizona  
 HBN: 2000000649296 AI Code: BF1021  
 Breed: 88% Friesian aAa: 513642  
 Dam Kirkby Patricia 12 BFE94 2E 2nd Dam Kirkby Patricia 5 BFV88



DTR PEARTREE PREMIER LADY 2

	-2	-1	0	1	2	
UK Type Merit					1.45	Excellent
Udder Comp					1.17	Excellent
Feet and Legs					1.66	Excellent
Stature					1.55	160cm
Chest Width					0.93	Wide
Body Depth					1.19	Deep
Angularity					1.18	Open Rib
Rump Angle					1.29	Low Pins
Rump Width					0.28	Wide
Rear Leg Side					-0.69	Straight
Foot Angle					1.11	Steep
F.Udder Attach					1.06	Tight
R. Udder Height					1.65	Very High
Udder Support					0.12	Strong
Udder Depth					1.07	Shallow
F.Teat Placement					0.61	Close
Teat Length					-0.36	Short
R.Teat Placement					0.38	Close
Teat Pos Side					0.44	Apart
Locomotion					1.68	Excellent

UK Daughters in UK Herds | 36 Dtrs 19 Herds 71% Rel

UK DTRS 143 UK HERDS 52  
 SOURCE UK | PLI Rel% 81

MILK kgs	REL %
129	96
FAT kgs	FAT %
13.1	0.1
PROT kgs	PROT %
4.5	0
PLI £	SCI £
197	193

Fertility Index	2.8	Improver
Lifespan	0.2	Improver
Calving Ease	0	Average
Milking Speed	0.77	Good
Temperament	0.75	Excellent
Somatic Cell	-1	Improver
Condition Score	-0.22	Low
Maintenance	16	High
Mastitis	0	Non.Imp

# Lismulligan REGAL

Prince 2 x Glen Albyn x Frigate  
 HBN: 2000000659001 AI Code: BF1060  
 Breed: 100% Friesian aAa: 513  
 Dam Lismulligan Redbreast 1.8 BFE90 2E 2nd Dam Lismulligan Redbreast 2 BFE92 2E



	-2	-1	0	1	2	
UK Type Merit					0.74	Excellent
Udder Comp					0.71	Excellent
Feet and Legs					0.48	Excellent
Stature					0.69	160cm
Chest Width					0.62	Wide
Body Depth					0.24	Deep
Angularity					-0.17	Coarse
Rump Angle					-0.47	High Pins
Rump Width					0.20	Wide
Rear Leg Side					-0.50	Straight
Foot Angle					0.61	Steep
F.Udder Attach					0.45	Tight
R. Udder Height					0.85	Very High
Udder Support					0.85	Strong
Udder Depth					0.30	Shallow
F.Teat Placement					0.43	Close
Teat Length					-0.43	Short
R.Teat Placement					0.71	Close
Teat Pos Side					1.04	Apart
Locomotion					0.48	Excellent

UK Daughters in UK Herds | 0 Dtrs 0 Herds 56% Rel

UK DTRS 0 UK HERDS 0  
 SOURCE UK | PLI Rel% 69

MILK kgs	REL %
3	76
FAT kgs	FAT %
3.4	0.04
PROT kgs	PROT %
0.2	0
PLI £	SCI £
25	107

Fertility Index	3.2	Improver
Lifespan	-0.2	Non.Imp
Calving Ease	0.9	Easy
Milking Speed	0.10	Improver
Temperament	0.87	Excellent
Somatic Cell	-1	Improver
Condition Score	0.57	High
Maintenance	10	High
Mastitis	N/A	N/A



# Inch ROBERT

SEXED SEMEN  
 HIGH COMPS.  
 HIGH FERTILITY  
 EASY CALVING

Randolph x Glen Albyn x Dovea Sem  
 HBN: 20937005754684 AI Code: BF1079  
 Breed: 89% Friesian aAa: 513  
 Dam Inch Blackisle Daphne 4 EX91 3E 2nd Dam Inch Sem Daphne 2 VG88



2ND DAM INCH SEM DAPHNE 2 VG88

	-2	-1	0	1	2	
UK Type Merit					0.25	Excellent
Udder Comp					0.17	Excellent
Feet and Legs					0.76	Excellent
Stature					0.84	160cm
Chest Width					0.08	Wide
Body Depth					0.60	Deep
Angularity					1.03	Open Rib
Rump Angle					0.22	Low Pins
Rump Width					1.33	Wide
Rear Leg Side					-0.13	Straight
Foot Angle					-0.19	Low
F.Udder Attach					-0.26	Loose
R. Udder Height					0.22	Very High
Udder Support					0.26	Strong
Udder Depth					-0.11	Deep
F.Teat Placement					-0.08	Outside
Teat Length					0.73	Long
R.Teat Placement					-0.02	Apart
Teat Pos Side					0.36	Apart
Locomotion					0.51	Excellent

UK DTRS 0 UK HERDS 0  
SOURCE UK | PLI Rel% 66

MILK kgs	REL %
-14	69
FAT kgs	FAT %
11.2	0.17
PROT kgs	PROT %
4.9	0.07
PLI £	SCI £
208	235

Fertility Index	1.5	Improver
Lifespan	0.2	Improver
Calving Ease	0.5	Easy
Milking Speed	0.51	Improver
Temperament	0.74	Excellent
Somatic Cell	-1	Improver
Condition Score	-0.99	Low
Maintenance	6	High
Mastitis	N/A	N/A

UK Daughters in UK Herds | 0 Dtrs 0 Herds 58% Rel

# Kirkby MONARCH

HIGH MILK  
 SCC  
 COW FAMILY

Frontier x Emperor x Beta  
 HBN: 0100000646644 AI Code: BF1022  
 Breed: 86% Friesian aAa: 534126  
 Dam: Kirkby Monica 7 BFE EX91 4E 2nd Dam: Kirkby Monica 3 BFE91



Dtr Netherholme Monarch Viona

	-2	-1	0	1	2	
UK Type Merit					-0.11	Poor
Udder Comp					-0.35	Poor
Feet and Legs					0.43	Excellent
Stature					-0.70	136cm
Chest Width					-1.82	Narrow
Body Depth					-1.20	Shallow
Angularity					0.36	Open Rib
Rump Angle					3.59	Low Pins
Rump Width					-0.60	Narrow
Rear Leg Side					1.43	Sickled
Foot Angle					-0.78	Low
F.Udder Attach					-1.39	Loose
R. Udder Height					-0.83	Very Low
Udder Support					1.37	Strong
Udder Depth					-0.65	Deep
F.Teat Placement					-0.42	Outside
Teat Length					0.14	Long
R.Teat Placement					0.95	Close
Teat Pos Side					-0.95	Close
Locomotion					0.57	Excellent

UK DTRS 200 UK HERDS 79  
SOURCE UK | PLI Rel% 85

MILK kgs	REL %
222	97
FAT kgs	FAT %
4.2	-0.05
PROT kgs	PROT %
8.1	0.02
PLI £	SCI £
150	113

Fertility Index	-4.8	Non.Imp
Lifespan	0.1	Improver
Calving Ease	-0.4	Harder
Milking Speed	-0.30	Below Aver
Temperament	-4.31	Poor
Somatic Cell	-5	Improver
Condition Score	-1.66	Low
Maintenance	-28	Low
Mastitis	-1	Improver

UK Daughters in UK Herds | 61 Dtrs 36 Herds 78% Rel

A man with a short beard and hair, wearing a black jacket with green and yellow accents, is sitting on the ground in a barn. He is smiling and looking towards the camera. Behind him are several calves, some black and some black and white, standing in a metal pen. The background is a stone wall.

**“When selecting bulls, we mainly focus on calving ease as easy calving is a must for us; the calves are good quality having great strength and depth, so we are very happy with them.”**

**David Webbley - Upper Ley Farm, Gloucestershire.**



## **COGENT BEEF IMPACT**

The release of our new financial index in the form of the COGENT BEEF IMPACT (£CBI) is aimed at customers wanting to find bulls that will suit their systems for Ease of Management and added Market Value.

**Freephone: 0800 783 7258**

[www.cogentuk.com](http://www.cogentuk.com)

Heywood House, Chowley Oak Business Park, Chowley Oak Lane, Chester, CH3 9GA

# What is EBI? (Genomic Breeding Index)

The EBI base was developed in 2000 to ensure continued genetic gain on Irish farms. Farms that are typically grazing their herds for the majority of the year and that require cows to produce high quality milk from grass alone. It is also important for Irish cows to calve regularly, ensuring calving blocks stay tight and the most can be made of the summer grazing months.

**The EBI base aims to develop a cow which can deliver the following:**

- ✓ High solids
- ✓ Good fertility
- ✓ In times of high milk prices, the cow needs to respond to the feeding of concentrate
- ✓ With poor milk prices, the cow needs to maintain body condition, go back in calf and still perform adequately with minimal cost.

**EBI sires have allowed Irish farmers to work towards the following key goals:**

- ✓ 80% of herd calving in 6 weeks
- ✓ Achieving less than 10% empty cows per year from 12 weeks of breeding
- ✓ Average cow in herd lasting 5 - 6 lactations.
- ✓ Breeding cows that produce 8% + solids (3.7% Protein & 4.3% Fat)
- ✓ Breeding cows that can produce 0.8 - 1.0 kilo of milk solids per kilo of body weight from grass each year

## € EBI Economic Breeding Index

<b>Milk Sub Index</b> (Milk S.I) Milk component of EBI	<b>Fertility Sub Index</b> (Fertility S.I) Fertility component of EBI	<b>Calving Sub Index</b> (Calving S.I) Calving component of EBI
<b>Beef Sub Index</b> (Beef S.I) Beef component of EBI	<b>Maintenance Sub Index</b> (Maintenance S.I) Maintenance component of EBI	<b>Health Sub Index</b> (Health S.I) Health component of EBI

## Management Traits

<b>SCC</b> Lower % desirable ≤ 0 Improver	<b>Gestation Length (Days)</b> Lower gestation keeps calving blocks tight	<b>Calving Interval (Days)</b> Lower calving interval keeps calving blocks tight
<b>Calving Difficulty %</b> Lower % desirable ≤ 2.00 Easy calving	<b>Survival</b> % of progeny who progress to next lactation over national average	<b>Temperament</b> Positive figure desired

# Brideview SUPER BELL

Supersonic x Noel x Nedboy

HBN: HOLIRLM151649711405 AI Code: H03555 Breed: 78% HO 22% FR

Dam: Brideview Bell 88 2nd Dam: Brideview Bell 66



**EBI**  
**€163**

PROD DTRS	PROD HERDS	DATE	SOURCE	EBI REL	IRISH information supplied by ICBF				
289	124	Dec-17	ICBF	85					
Milk KGS	Fat KGS	FAT %	PROT KGS	PROT %	MILK S.I.	MILK S.I. REL			
111	14.4	0.16	11.5	0.13	€ 88	98%			
FERTILITY S.I.	€ 58	72%	HEALTH S.I.	-€ 4	75%				
CALVING INTERVAL		-3.31	LAMENESS		-0.02				
SURVIVAL		1.33	MASTITIS		0.02				
			SCC		0.08				
CALVING S.I.	€ 42	95%	MANAGEMENT S.I.	-€ 1	73%				
DIRECT CALVING EASE		3.4	MILK SPEED		-12.10				
MATERNAL CALVING EASE		5.99	TEMP		-0.14				
GESTATION LENGTH		-3.63							
CALF MORTALITY		-0.98							
BEEF S.I.	-€ 9	96%	MAINTENANCE S.I.	-€ 12	74%				
			STATURE		-0.74				
			CONDITION SCORE		0.91				
UK information supplied by AHDB									
Milk (kg)	Fat (kg)	Protein (kg)	Fat (%)	Prot (%)	Lifespan	SCC	Mastitis	Fertility Index	SCI
191	14.3	13.5	0.14	0.15	0.2	13	0	N/A	181

# Wintersell TITAN

Troy x Oman x Goldwyn

HBN: HOLGBRM261437203986 AI Code: H04521 Breed: 100% HO

Dam: Wintersell Mila 22 EX94 2nd Dam: Wintersell Mila 10 EX93



**EBI**  
**€196**

PROD DTRS	PROD HERDS	DATE	SOURCE	EBI REL	IRISH information supplied by ICBF				
0	0	Dec-17	ICBF	55					
Milk KGS	Fat KGS	FAT %	PROT KGS	PROT %	MILK S.I.	MILK S.I. REL			
362	15.4	0.02	14.2	0.04	€ 83	68%			
FERTILITY S.I.	€ 65	57%	HEALTH S.I.	€ 12	58%				
CALVING INTERVAL		-2.04	LAMENESS		-0.50				
SURVIVAL		3.16	MASTITIS		-0.70				
			SCC		-0.60				
CALVING S.I.	€ 45	38%	MANAGEMENT S.I.	€ 2	47%				
DIRECT CALVING EASE		1.8	MILK SPEED		-11.5				
MATERNAL CALVING EASE		5.84	TEMP		-0.40				
GESTATION LENGTH		-3.50							
CALF MORTALITY		0.17							
BEEF S.I.	-€ 5	37%	MAINTENANCE S.I.	-€ 7	35%				
			STATURE		-0.79				
			CONDITION SCORE		-0.17				
UK information supplied by AHDB									
Milk (kg)	Fat (kg)	Protein (kg)	Fat (%)	Prot (%)	Lifespan	SCC	Mastitis	Fertility Index	SCI
438	15	15.6	-0.06	0.02	0.4	-66	-13	8.3	341

# Three Rivers ORCA

**NEW**

Arctic x Lochinvar x Mark

HBN: HOLIRLM151658951564 AI Code: N/A Breed: 69% HO 25% FR 6% MO

Dam: Threerivers Louisa



**EBI**  
**€287**

Dam of Three Rivers Orca

PROD DTRS	PROD HERDS	DATE	SOURCE	EBI REL	IRISH information supplied by ICBF				
0	0	Dec-17	ICBF	48					
Milk KGS	Fat KGS	FAT %	PROT KGS	PROT %	MILK S.I.	MILK S.I. REL			
344	19.0	0.08	22.0	0.17	€ 136	57%			
FERTILITY S.I.	€ 109	42%	HEALTH S.I.		€ 0	42%			
CALVING INTERVAL	-5.25		LAMENESS		-0.01				
SURVIVAL	3.43		MASTITIS		0.00				
			SCC		0.01				
CALVING S.I.	€ 39	52%	MANAGEMENT S.I.		€ 6	42%			
DIRECT CALVING EASE	2.1		MILK SPEED		-1.41				
MATERNAL CALVING EASE	5.76		TEMP		0.15				
GESTATION LENGTH	-2.74								
CALF MORTALITY	-0.32		MAINTENANCE S.I.		€ 12	40%			
			STATURE		-1.07				
			CONDITION SCORE		+0.32				
BEEF S.I.	-€ 14	44%							
UK information supplied by AHDB									
Milk (kg)	Fat (kg)	Protein (kg)	Fat (%)	Prot (%)	Lifespan	SCC	Mastitis	Fertility Index	SCI
420	20.5	18.7	0.06	0.1	0.6	-22	-2	N/A	329

# Umma Cuddy PEAKS

Cuddy Reeks x Mars Uphill x Gibor

HBN: HOLIRLM361080622276 AI Code: H04542 Breed: 91% HO 9% FR

Dam: Umma UPH Laura 1540 2nd Dam: Umma Gibor Laura



**EBI**  
**€231**

G DAM UMMA GIBOR LAURA

PROD DTRS	PROD HERDS	DATE	SOURCE	EBI REL	IRISH information supplied by ICBF				
0	0	Dec-17	ICBF	58					
Milk KGS	Fat KGS	FAT %	PROT KGS	PROT %	MILK S.I.	MILK S.I. REL			
39	6.3	0.08	9.1	0.14	€ 63	67%			
FERTILITY S.I.	€ 144	48%	HEALTH S.I.		€ 11	51%			
CALVING INTERVAL	-6.99		LAMENESS		-0.03				
SURVIVAL	4.51		MASTITIS		-0.03				
			SCC		-0.15				
CALVING S.I.	€ 28	86%	MANAGEMENT S.I.		-€ 2	48%			
DIRECT CALVING EASE	2.3		MILK SPEED		9.76				
MATERNAL CALVING EASE	5.45		TEMP		0.03				
GESTATION LENGTH	-1.53								
CALF MORTALITY	0.19		MAINTENANCE S.I.		-€ 3	45%			
			STATURE		0.05				
			CONDITION SCORE		0.42				
BEEF S.I.	-€ 11	51%							
UK information supplied by AHDB									
Milk (kg)	Fat (kg)	Protein (kg)	Fat (%)	Prot (%)	Lifespan	SCC	Mastitis	Fertility Index	SCI
119	8.4	11.5	0.08	0.16	0.6	-14	-1	N/A	241

# Courtmatrix MAXIMUS

Pirate x Gibor x Sjoerd

HBN: HOLIRLM041516161814 AI Code: H04540 Breed: 78% HO 22% FR

Dam: Courtmatrix Ann 12 2nd Dam: Courtmatrix Ann 8



**EBI**  
**€172**

Dam Courtmatrix Ann

PROD DTRS	PROD HERDS	DATE	SOURCE	EBI REL	IRISH information supplied by ICBF				
0	0	Dec-17	ICBF	61					
Milk KGS	Fat KGS	FAT %	PROT KGS	PROT %	MILK S.I.	MILK S.I. REL			
-29	5.0	0.10	7.0	0.13	€ 51	71%			
FERTILITY S.I.	€ 82	51%	HEALTH S.I.	€ 8	52%				
CALVING INTERVAL		-4.23	LAMENESS		-0.04				
SURVIVAL		2.30	MASTITIS		-0.02				
			SCC		-0.07				
CALVING S.I.	€ 37	85%	MANAGEMENT S.I.	-€ 7	51%				
DIRECT CALVING EASE		3.7	MILK SPEED		6.17				
MATERNAL CALVING EASE		5.89	TEMP		-0.14				
GESTATION LENGTH		-3.54	MAINTENANCE S.I. <td>€ 10</td> <td>47%</td> <td colspan="2"></td>		€ 10	47%			
CALF MORTALITY		0.33	STATURE		-0.29				
			CONDITION SCORE		1.30				
BEEF S.I.	-€ 8	50%	UK information supplied by AHDB						
Milk (kg)	Fat (kg)	Protein (kg)	Fat (%)	Prot (%)	Lifespan	SCC	Mastitis	Fertility Index	SCI
53	7.5	9.8	0.12	0.18	0.3	-4	0	N/A	176

# Peak MR GREY

Jetset x O Style x Planet

HBN: HOLUSAM000549685043 AI Code: H03822 Breed: 100% HO

Dam: A-L-H Moviemax 2nd Dam: Brookview-E Moviestar-ET



**EBI**  
**€267**

PROD DTRS	PROD HERDS	DATE	SOURCE	EBI REL	IRISH information supplied by ICBF				
0	0	Dec-17	ICBF	58					
Milk KGS	Fat KGS	FAT %	PROT KGS	PROT %	MILK S.I.	MILK S.I. REL			
630	23.0	-0.03	18.0	-0.05	€ 98	66%			
FERTILITY S.I.	€ 95	54%	HEALTH S.I.	€ 22	55%				
CALVING INTERVAL		-3.17	LAMENESS		-0.07				
SURVIVAL		4.42	MASTITIS		-0.09				
			SCC		-0.22				
CALVING S.I.	€ 67	85%	MANAGEMENT S.I.	€ 6	43%				
DIRECT CALVING EASE		1.7	MILK SPEED		-4.38				
MATERNAL CALVING EASE		5.20	TEMP		0.13				
GESTATION LENGTH		-5.81	MAINTENANCE S.I. <td>-€ 20</td> <td>35%</td> <td colspan="2"></td>		-€ 20	35%			
CALF MORTALITY		-0.32	STATURE		+2.61				
			CONDITION SCORE		-0.05				
BEEF S.I.	-€ 1	38%	UK information supplied by AHDB						
Milk (kg)	Fat (kg)	Protein (kg)	Fat (%)	Prot (%)	Lifespan	SCC	Mastitis	Fertility Index	SCI
702	20.5	18.7	-0.16	-0.09	0.6	-22	-2	6.5	222

# Imleach LUCKY GLOSS

Whistler x Norwester x Merci

HBN: IE341365621426 AI Code: H04806 Breed: 63% HO 34% FR 3% MO

Dam: Imleach Gloss 916 2nd Dam: Imleach Gmi Gloss



**EBI**  
**€269**

Dam: Imleach Gloss 916 VG86

PROD DTRS	PROD HERDS	DATE	SOURCE	EBI REL	IRISH information supplied by ICBF				
83	38	Dec-17	ICBF	73					
Milk KGS	Fat KGS	FAT %	PROT KGS	PROT %	MILK S.I.	MILK S.I. REL			
208	17.0	0.14	13.0	0.09	€ 91	90%			
FERTILITY S.I.	€ 130	51%	HEALTH S.I.	-€ 5	63%				
CALVING INTERVAL		-6.33	LAMENESS		-0.04				
SURVIVAL		4.01	MASTITIS		0.04				
			SCC		0.11				
CALVING S.I.	€ 53	93%	MANAGEMENT S.I.	€ 3	63%				
DIRECT CALVING EASE		2.4	MILK SPEED		-4.45				
MATERNAL CALVING EASE		5.78	TEMP		0.05				
GESTATION LENGTH		-4.47							
CALF MORTALITY		-0.76							
BEEF S.I.	-€ 3	92%	MAINTENANCE S.I.	€ 0	63%				
			STATURE		-1.33				
			CONDITION SCORE		1.58				
UK information supplied by AHDB									
Milk (kg)	Fat (kg)	Protein (kg)	Fat (%)	Prot (%)	Lifespan	SCC	Mastitis	Fertility Index	SCI
286	15.8	14.5	0.08	0.1	0.5	17	1	N/A	193

# Parkdub MAGNET

Oman x Ruud x Europe

HBN: IE151013781568 AI Code: H03554 Breed: 81% HO 19% FR

Dam: Parkdub Margo 17 EX90 2nd Dam: Parkdub Margo 7



**EBI**  
**€196**

Dam Parkdub Margo 17 6th Lact

PROD DTRS	PROD HERDS	DATE	SOURCE	EBI REL	IRISH information supplied by ICBF				
1454	472	Dec-17	ICBF	86					
Milk KGS	Fat KGS	FAT %	PROT KGS	PROT %	MILK S.I.	MILK S.I. REL			
117	8.1	0.06	7.9	0.06	€ 53	99%			
FERTILITY S.I.	€ 79	68%	HEALTH S.I.	€ 9	85%				
CALVING INTERVAL		-3.68	LAMENESS		-0.02				
SURVIVAL		2.64	MASTITIS		-0.01				
			SCC		-0.15				
CALVING S.I.	€ 52	98%	MANAGEMENT S.I.	€ 12	82%				
DIRECT CALVING EASE		2.5	MILK SPEED		-19.99				
MATERNAL CALVING EASE		5.18	TEMP		0.17				
GESTATION LENGTH		-4.20							
CALF MORTALITY		-0.72							
BEEF S.I.	-€ 5	98%	MAINTENANCE S.I.	-€ 3	86%				
			STATURE		0.52				
			CONDITION SCORE		0.59				
UK information supplied by AHDB									
Milk (kg)	Fat (kg)	Protein (kg)	Fat (%)	Prot (%)	Lifespan	SCC	Mastitis	Fertility Index	SCI
196	9.7	10.6	0.03	0.09	0.3	-14	0	N/A	163

Ballynagrada Nautical 19 x Lysell Image x Reary Norton  
 HBN: IE151548591442 AI Code: BF1072 Breed: 19% HO 81% FR  
 Dam: Coolmohan Rebecca Image 1 EX92 2nd Dam: Coolmohan Rebecca 3 EX90



**EBI**  
**€96**

Dam Coolmohan Rebecca Image 1 EX92

PROD DTRS	PROD HERDS	DATE	SOURCE	EBI REL	IRISH information supplied by ICBF				
0	0	Dec-17	ICBF	54					
Milk KGS	Fat KGS	FAT %	PROT KGS	PROT %	MILK S.I.	MILK S.I. REL			
-452	-10.0	0.13	-9.0	0.12	-€ 34	65%			
FERTILITY S.I.	€ 101	48%	HEALTH S.I.	€ 2	51%				
CALVING INTERVAL		-5.67	LAMENESS		-0.05				
SURVIVAL		2.42	MASTITIS		-0.02				
			SCC		0.08				
CALVING S.I.	€ 37	55%	MANAGEMENT S.I.	-€ 10	47%				
DIRECT CALVING EASE		2.4	MILK SPEED		-10.44				
MATERNAL CALVING EASE		5.68	TEMP		-0.38				
GESTATION LENGTH		-2.61							
CALF MORTALITY		0.00							
BEEF S.I.	-€ 8	48%	MAINTENANCE S.I.	€ 8	45%				
			STATURE		-1.72				
			CONDITION SCORE		+3.23				
UK information supplied by AHDB									
Milk (kg)	Fat (kg)	Protein (kg)	Fat (%)	Prot (%)	Lifespan	SCC	Mastitis	Fertility Index	SCI
-364	-3.4	-3.2	0.28	0.22	0.3	13	0	7.3	27

Minstrel x Rancher x Royal  
 HBN: HOLIRLM151828781155 AI Code: CB0077 Breed: 50% HO 3% FR 47% JE  
 Dam: Ballydague Rancher De Vries 2nd Dam: Ballydague Royal De Vries



**EBI**  
**€202**

Eurogene Kiwi Daughter

PROD DTRS	PROD HERDS	DATE	SOURCE	EBI REL	IRISH information supplied by ICBF				
487	151	Dec-17	ICBF	92					
Milk KGS	Fat KGS	FAT %	PROT KGS	PROT %	MILK S.I.	MILK S.I. REL			
19	17.6	0.28	8.9	0.14	€ 87	99%			
FERTILITY S.I.	€ 63	84%	HEALTH S.I.	-€ 5	78%				
CALVING INTERVAL		-2.93	LAMENESS		-0.01				
SURVIVAL		2.10	MASTITIS		0.03				
			SCC		0.07				
CALVING S.I.	€ 35	98%	MANAGEMENT S.I.	€ 6	92%				
DIRECT CALVING EASE		1.5	MILK SPEED		-3.68				
MATERNAL CALVING EASE		7.95	TEMP		0.13				
GESTATION LENGTH		-2.44							
CALF MORTALITY		-0.48							
BEEF S.I.	-€ 30	98%	MAINTENANCE S.I.	€ 46	93%				
			STATURE		-2.94				
			CONDITION SCORE		0.19				
UK information supplied by AHDB									
Milk (kg)	Fat (kg)	Protein (kg)	Fat (%)	Prot (%)	Lifespan	SCC	Mastitis	Fertility Index	SCI
100	16.6	11.3	0.27	0.17	0.3	12	0	N/A	202



# Garrymartin CRONIC

Dan Supersonic x Eckland x Royal Hugo  
 HBN:IE151055251018 AI Code: H02973 Breed: 75% HOL 25% FR  
 Dam: Garrymartin Crocus 795 VG88 2nd Dam: Garrymartin Crocus 35



**EBI**  
**€188**

Cronic daughters

PROD DTRS	PROD HERDS	DATE	SOURCE	EBI REL	IRISH information supplied by ICBF					
387	178	Dec-17	ICBF	85						
Milk KGS	Fat KGS	FAT %	PROT KGS	PROT %	MILK S.I.	MILK S.I. REL				
360	14.6	0.01	13.2	0.01	€ 75	98%				
FERTILITY S.I.	€ 84	70%	HEALTH S.I.	-€ 2	77%					
CALVING INTERVAL	-4.72		LAMENESS	-0.02						
SURVIVAL	1.95		MASTITIS	0.02						
			SCC	0.03						
CALVING S.I.	€ 38	96%	MANAGEMENT S.I.	€ 2	73%					
DIRECT CALVING EASE	2.7		MILK SPEED	-6.45						
MATERNAL CALVING EASE	6.32		TEMP	0.01						
GESTATION LENGTH	-3.13		MAINTENANCE S.I.	€ 17	74%					
CALF MORTALITY	0.01		STATURE	-0.85						
BEEF S.I.	-€ 26	96%	CONDITION SCORE	1.48						
UK information supplied by AHDB										
Milk (kg)	Fat (kg)	Protein (kg)	Fat (%)	Prot (%)	Lifespan	SCC	Mastitis	Fertility Index	SCI	
436	14.4	14.8	-0.07	0.01	0.2	7	0	N/A	121	

# Possextown FAITHFUL

**NEW**

Odie x Hammer x Dano  
 HBN: H0LIRLM281565481002 AI Code: H04746 Breed: 66% HO 34% FR  
 Dam: Possextown Ellie 866 2nd Dam: Possextown HZO Ellie



**EBI**  
**€279**

Dam of Faithful

PROD DTRS	PROD HERDS	DATE	SOURCE	EBI REL	IRISH information supplied by ICBF					
0	0	Dec-17	ICBF	60						
Milk KGS	Fat KGS	FAT %	PROT KGS	PROT %	MILK S.I.	MILK S.I. REL				
-17	12.0	0.22	8.0	0.15	€ 75	68%				
FERTILITY S.I.	€ 152	51%	HEALTH S.I.	€ 10	51%					
CALVING INTERVAL	-8.84		LAMENESS	-0.04						
SURVIVAL	3.24		MASTITIS	-0.04						
			SCC	-0.09						
CALVING S.I.	€ 44	86%	MANAGEMENT S.I.	€ 6	49%					
DIRECT CALVING EASE	2.1		MILK SPEED	-6.57						
MATERNAL CALVING EASE	5.78		TEMP	0.11						
GESTATION LENGTH	-3.21		MAINTENANCE S.I.	€ 10	47%					
CALF MORTALITY	-0.76		STATURE	-1.87						
BEEF S.I.	-€ 17	49%	CONDITION SCORE	0.51						
UK information supplied by AHDB										
Milk (kg)	Fat (kg)	Protein (kg)	Fat (%)	Prot (%)	Lifespan	SCC	Mastitis	Fertility Index	SCI	
65	12.5	10.6	0.21	0.18	0.4	-7	-1	N/A	231	

Type data supplied by Holstein UK. Production and fitness data supplied by AHDB.

Type data supplied by Holstein UK. Production and fitness data supplied by AHDB.

# Clondrohid BLACK LIGHTNING

Dan Radney Levi 5 x Kevinsfort OJI Haze x Comestar Lempire  
 HBN: IE141801641177 AI Code: H04539 Breed: 94% HOL 6% FR  
 Dam: Adrivale KOZ Lila VG86 2nd Dam: Adrivale LZP Lila



**EBI**  
**€286**

Dam Adrivale KOZ Lila

PROD DTRS	PROD HERDS	DATE	SOURCE	EBI REL	IRISH information supplied by ICBF				
0	0	Dec-17	ICBF	61					
Milk KGS	Fat KGS	FAT %	PROT KGS	PROT %	MILK S.I.	MILK S.I. REL			
-151	15.0	0.37	2.7	0.14	€ 60	71%			
FERTILITY S.I.	€ 176	51%	HEALTH S.I.	€ 7	55%				
CALVING INTERVAL		-8.65	LAMENESS		-0.03				
SURVIVAL		5.37	MASTITIS		-0.04				
			SCC		-0.04				
CALVING S.I.	€ 51	88%	MANAGEMENT S.I.	€ 0	53%				
DIRECT CALVING EASE		2.0	MILK SPEED		-8.09				
MATERNAL CALVING EASE		5.14	TEMP		-0.07				
GESTATION LENGTH		-4.05	MAINTENANCE S.I. <td>€ 17</td> <td>45%</td> <td colspan="2"></td>		€ 17	45%			
CALF MORTALITY		-0.16	STATURE		-0.65				
			CONDITION SCORE		+0.01				
BEEF S.I.	-€ 25	52%	UK information supplied by AHDB						
Milk (kg)	Fat (kg)	Protein (kg)	Fat (%)	Prot (%)	Lifespan	SCC	Mastitis	Fertility Index	SCI
-68	14.7	6.3	0.39	0.19	0.7	-1	-1	N/A	244

# Ballygown YRY BOYCIE

Levi x Magnet x Glenfinnan  
 HBN: IE211058411335 AI Code: H05078 Breed: 75% HO 25% FR  
 Dam: Ballygown PKX Mia 1160 2nd Dam: Ballygown GZF Mia VG88



**EBI**  
**€261**

Dam Ballygown PKX Mia 1160

PROD DTRS	PROD HERDS	DATE	SOURCE	EBI REL	IRISH information supplied by ICBF				
0	0	Dec-17	ICBF	52					
Milk KGS	Fat KGS	FAT %	PROT KGS	PROT %	MILK S.I.	MILK S.I. REL			
-11	21.0	0.36	10.0	0.18	€ 102	66%			
FERTILITY S.I.	€ 110	45%	HEALTH S.I.	-€ 3	50%				
CALVING INTERVAL		-5.66	LAMENESS		-0.30				
SURVIVAL		3.13	MASTITIS		-0.02				
			SCC		0.16				
CALVING S.I.	€ 51	47%	MANAGEMENT S.I.	€ 4	47%				
DIRECT CALVING EASE		2.0	MILK SPEED		-19.95				
MATERNAL CALVING EASE		5.61	TEMP		-0.50				
GESTATION LENGTH		-4.19	MAINTENANCE S.I. <td>€ 7</td> <td>41%</td> <td colspan="2"></td>		€ 7	41%			
CALF MORTALITY		-0.14	STATURE		-0.74				
			CONDITION SCORE		-0.02				
BEEF S.I.	-€ 11	46%	UK information supplied by AHDB						
Milk (kg)	Fat (kg)	Protein (kg)	Fat (%)	Prot (%)	Lifespan	SCC	Mastitis	Fertility Index	SCI
71	18.7	12.2	0.34	0.22	0.4	23	-4	N/A	250

# Jeanjo ABSOLUTE

Curra Royal Laurence x Kevinsfort OJI Haze x Macfarlanes Dauntless  
 HBN:IE161260264354 AI Code: H05079 Breed: 78% HOL 19% FR 3% JE  
 Dam: Jeanjo KOZ Anna 3066 2nd Dam: Jeanjo Dauntless Anna 1910



**EBI**  
**€301**

Dam Jeanjo KOZ Anna 3066

PROD DTRS	PROD HERDS	DATE	SOURCE	EBI REL	IRISH information supplied by ICBF				
0	0	Dec-17	ICBF	50					
Milk KGS	Fat KGS	FAT %	PROT KGS	PROT %	MILK S.I.	MILK S.I. REL			
244	14.9	0.09	12.6	0.08	€ 84	59%			
FERTILITY S.I.	€ 155	45%	HEALTH S.I.	€ 4	46%				
CALVING INTERVAL		-8.42	LAMENESS		-0.3				
SURVIVAL		3.94	MASTITIS		-0.2				
			SCC		0.00				
CALVING S.I.	€ 59	52%	MANAGEMENT S.I.	€ 5	44%				
DIRECT CALVING EASE		1.5	MILK SPEED		-8.21				
MATERNAL CALVING EASE		5.78	TEMP		0.80				
GESTATION LENGTH		-4.81	MAINTENANCE S.I. <td>€ 12</td> <td>40%</td> <td colspan="2"></td>		€ 12	40%			
CALF MORTALITY		-0.76	STATURE		-0.42				
			CONDITION SCORE		+1.02				
BEEF S.I.	-€ 18	43%	UK information supplied by AHDB						
Milk (kg)	Fat (kg)	Protein (kg)	Fat (%)	Prot (%)	Lifespan	SCC	Mastitis	Fertility Index	SCI
-45	1.5	5.7	0.08	0.16	0.7	-4	-4	N/A	265

# Kilteskin ATLAS

Parkdub Magnet x Bagworth Zander Keet x SRB Collins Royal Hugo  
 HBN:IE151799171343 AI Code: H04541 Breed: 75% HOL 25% FR  
 Dam: Kilteskin BWZ Aisling 614 EX90 2nd Dam: Kilteskin UYC Aisling 492 EX90



**EBI**  
**€233**

Dam and GDam of Atlas

PROD DTRS	PROD HERDS	DATE	SOURCE	EBI REL	IRISH information supplied by ICBF				
0	0	Dec-17	ICBF	61					
Milk KGS	Fat KGS	FAT %	PROT KGS	PROT %	MILK S.I.	MILK S.I. REL			
284	10.6	-0.01	12.1	0.04	€ 67	71%			
FERTILITY S.I.	€ 109	53%	HEALTH S.I.	-€ 2	54%				
CALVING INTERVAL		-5.79	LAMENESS		-0.01				
SURVIVAL		2.90	MASTITIS		0.02				
			SCC		0.02				
CALVING S.I.	€ 49	86%	MANAGEMENT S.I.	€ 10	52%				
DIRECT CALVING EASE		2.5	MILK SPEED		-22.19				
MATERNAL CALVING EASE		5.99	TEMP		0.09				
GESTATION LENGTH		-4.10	MAINTENANCE S.I. <td>€ 8</td> <td>46%</td> <td colspan="2"></td>		€ 8	46%			
CALF MORTALITY		-0.76	STATURE		0.68				
			CONDITION SCORE		-0.50				
BEEF S.I.	-€ 9	49%	UK information supplied by AHDB						
Milk (kg)	Fat (kg)	Protein (kg)	Fat (%)	Prot (%)	Lifespan	SCC	Mastitis	Fertility Index	SCI
362	11.5	13.9	-0.07	0.04	0.4	6	0	N/A	144

EBI
4 Absolute
5 Atlas
6 Black Lightning
7 Boycie
8 Cronic

9 Faithful
10 Flynn
11 Kiwi
12 Lucky Gloss
13 Magnet

14 Maximus
15 Mr Grey
16 Orca
17 Peaks
18 Superbell
19 Titan

**Welcome to the February edition of the Cogent Grazing catalogue.**

We offer a wide range of top quality proven sires, and an impressive selection of well-bred young sires. We are committed to assisting dairy farmers in driving profitability, with the aim to breed efficient cows that will produce high quality milk from the cheapest feed available: Grass.

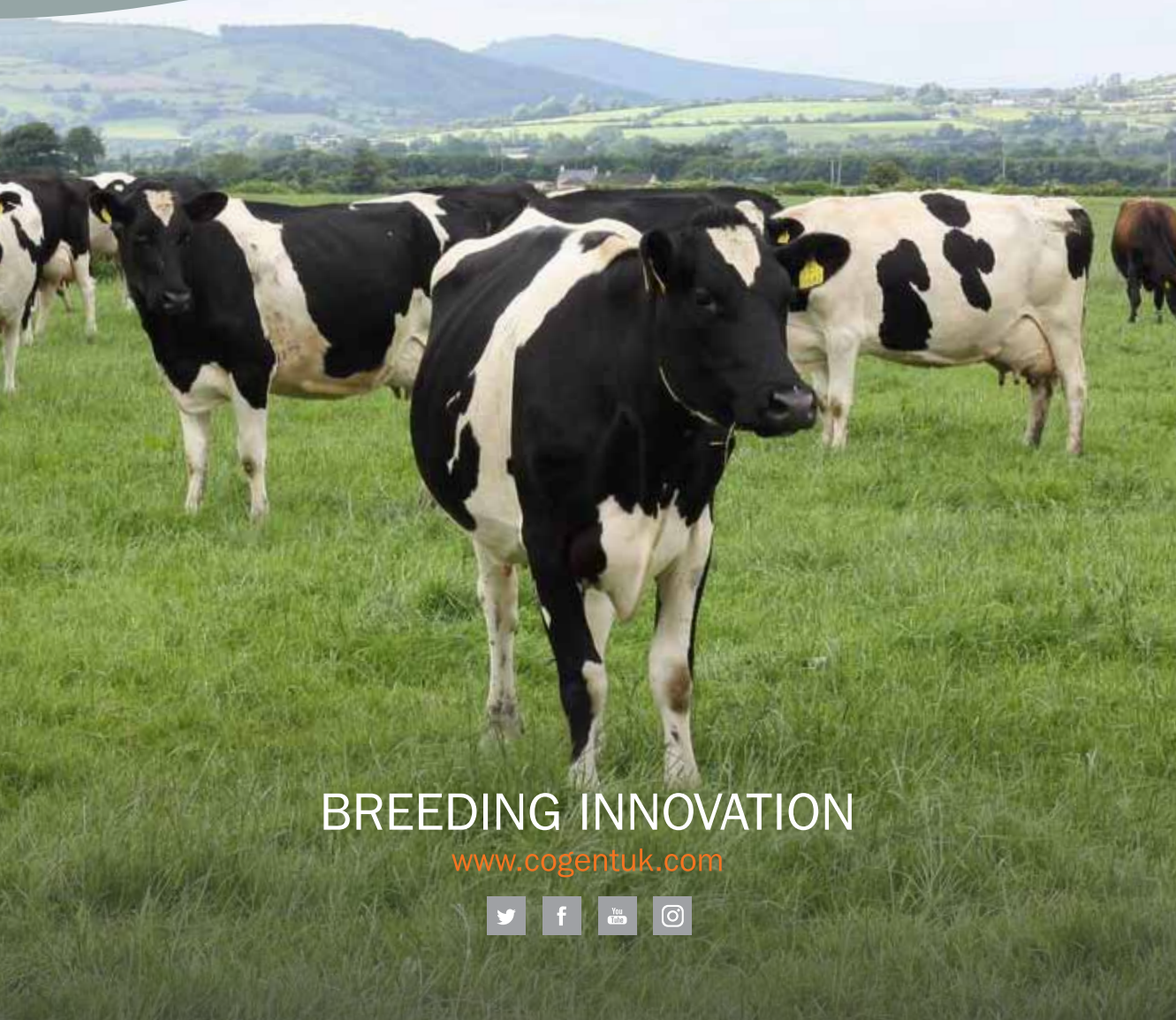


cogent™



**EBI**

**CATALOGUE  
SPRING 2018**



**BREEDING INNOVATION**

[www.cogentuk.com](http://www.cogentuk.com)

