

cogentuk.com



cogent[™]

BEEF IMPACT

AUTUMN
2021
CATALOGUE

Part of the **STgenetics** group.
www.stgen.com

BREEDING INNOVATION

ABERDEEN-ANGUS

- 8 RAWBURN BLACKBUSH S420
- 9 QUAKER HILL DEAD CENTER
- 10 BLACKHAUGH DIEGO S689
- 11 MELVIEW GREGOR T271
- 12 MORVEN MR ALBERT S792
- 13 GOULDING PADDY T859
- 14 RAWBURN EVOLUTION U837
- 15 RAWBURN KONG T607
- 16 BLACKHAUGH LUCAS U848
- 17 CAPE WRATH ELDAMAN U793
- 18 LUNEVALLEY MAJESTIC U916

BRITISH BLUE

- 19 AUCHENLAY HITMAN
- 20 SPRINGHILL IMPROVEMENT
- 21 KERSEY KARATE
- 22 KERSEY KINGPIN
- 23 SPRINGHILL LALA
- 24 MAIDENLANDS MARSHALL
- 25 KELOWNA MOJO
- 26 KERSEY NIMROD
- 27 KERSEY NEWTON
- 28 KERSEY NICKEL
- 29 KERSEY NIMBUS
- 30 TOPSIDE NO HORNS #1 (P)

CHAROLAIS

- 31 GOLF

HEREFORD

- 32 NETHERHALL 1 OZ DAFFY M024
- 33 NETHERHALL 1 JACK P602(P)
- 34 NETHERHALL 1 MATTY S098

LIMOUSIN

- 35 ELITE LACETTE
- 36 TWEMLOWS OFFICER
- 37 TWEMLOWS NOSTRADAMUS

LONGHORN

- 38 BLACKBROOK BAKEWELL

WAGYU

- 39 MR NANASHI
- 39 MR HARUKOE



PROVEN – Proven sire with over 100 calving surveys.



4M SEXED – Sire is available in Male SexedULTRA 4M.



ROYALTY – Sire is eligible for royalty fee for any progeny that is registered as pedigree.



PROVISIONAL DATA – For sires that have under 100 calving's



MEADOW QUALITY – Meadow quality approved Superior Sire Scheme.



BUITELAAR - Buitelaar approved selected sire scheme.



HIGH GENETIC SIRE – Tesco integrated beef scheme

NOT FOR PEDIGREE USE

Progeny born from this sire can not be registered as pedigree, for commercial use only.

EARLY LACTATION ONLY

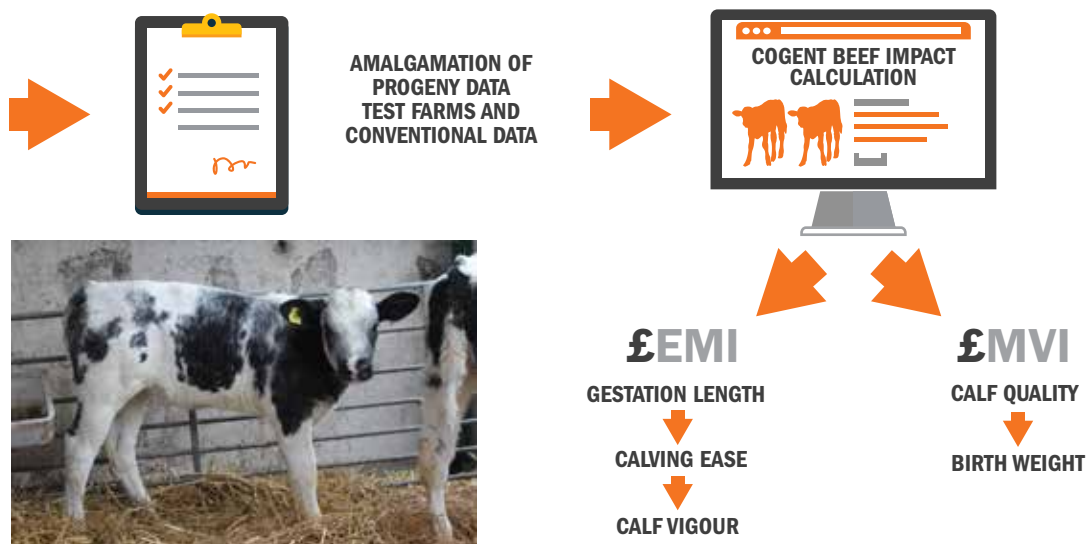
It is recommended that this sire is used in early lactation cows to avoid problems associated with older cows at the point of calving.

COGENT BEEF INDEX

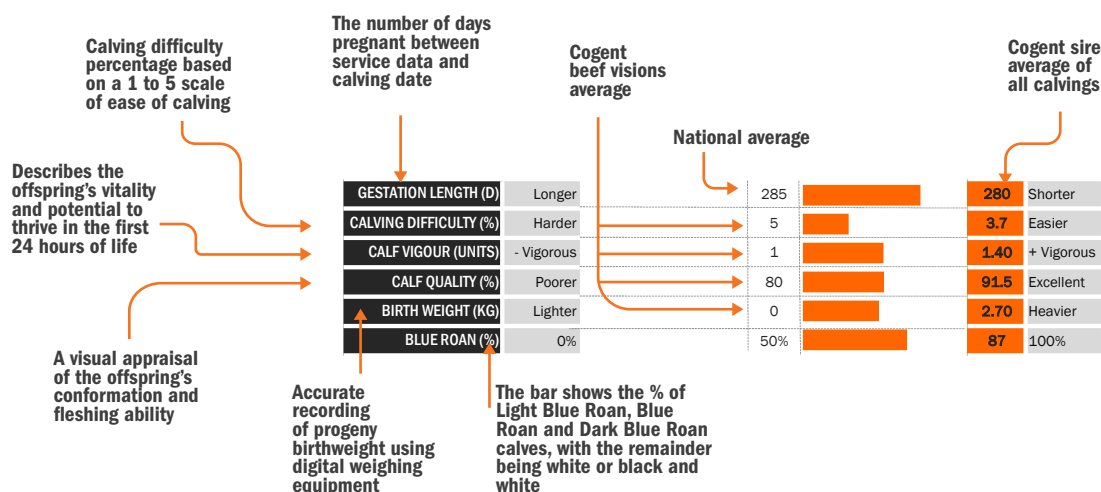
Beef visions, Cogent's bespoke progeny testing program, continues to develop and improve its processes to gain more accurate and reliable bull data on our bulls, for UK dairy farmers. More semen than ever before is entering a large number of test farms and visions farms UK-wide, with the aim of graduating more Beef bulls with superior genetics. Improvement in the performance recording of both sire and progeny has allowed for larger and more accurate datasets.

ON-FARM QUALITY ASSESSMENT

The on-farm assessment of quality scoring consists of an overall visual inspection of the calf as well as a manual hands-on approach where the loin, ribs, rump, and shoulder are physically examined to determine the quality grade. The grade is based on the fullness and fleshing cover over these four points as well as an overall confirmation/ muscle formation. The grade is then scored on a 1-5 scale 1 being poor and 5 being excellent. Raw birthweights are now recorded using approved equipment and are analysed using their deviation from the Cogent breed group average.



UNDERSTANDING OUR DATA



A PROVEN BEEF VALUE PROGRAMME FOR THE MODERN DAY DAIRY FARMER

The main goal of the Cogent Beef Breeding Programme is to ensure selection of bulls that can perform in any system, that is why Cogent has partnered with some of the most forward thinking, progressive beef herds in the UK. Working with breeders that implement high herd health plans ensures bulls selected for the programme are free from all diseases such as IBR, BVD, Lepto and Johne's before entering the EU facility. By utilising advanced breeding technologies, Cogent can create multiple pregnancies from programme leading males and females to ensure

they are bringing the correct genetics into the stud. Cogent boasts a state-of-the-art bull stud providing high performance, high quality semen to both UK and international markets. The production facility aims to produce a disease-free product that allows our customers to enjoy the benefits of the beef genetics programme. The quality of the beef semen and advancements in technology and sorting procedures allows Cogent to provide male sexed semen with greater than 90% gender purity, and quality control parameters to match the sexedULTRA 4M offering.

Andrew Elliot and family



- COGENT BEEF BREEDING PROGRAMME -

**"THROUGH OUR PARTNERSHIP WITH
COGENT, KERSEY BRITISH BLUE BULLS ARE
HAVING A POSITIVE INFLUENCE ON THE BEEF
AND DAIRY INDUSTRIES"**
CHRIS PARTRIDGE, KERSEY BRITISH BLUES



Chris and Sarah Partridge



- COGENT BEEF BREEDING PROGRAMME -



TRIPLE

TRIPLE IMPACT EMI



EASE OF MANAGEMENT IS AIMED AT CUSTOMERS WANTING TO CAPITALISE ON LIVE AND VIGOROUS CALVES BORN WITHOUT ASSISTANCE. ALL BULLS FEATURED IN THIS TRIPLE IMPACT EMI MIX SCORE ABOVE £40 ON THEIR EMI VALUE. AVAILABLE IN SEXED ULTRA 4M

TRIPLE IMPACT HEREFORD



A COMBINATION OF 3 HEREFORD SIRES THAT ARE DESIGNED TO PRODUCE CALVES THAT ARE EASILY BORN WITHOUT ASSISTANCE AND WITH HIGH VIGOUR AT BIRTH.

The **TRIPLE IMPACT** Mixes contain fertility enhancing semen that features three bulls with variations in semen maturation. All the triple mixes provide consistent quality calves that are easily managed and full of vitality.

This product has been designed for UK dairy farmers and provides our customers with consistent calving ease.

IMPACT

TRIPLE IMPACT ANGUS



AVAILABLE IN MALE SEXED ULTRA 4M THIS MIX IS AIMED AT CUSTOMERS WANTING TO CAPITALISE ON LIVE VIGOROUS ABERDEEN ANGUS CALVES' BORN WITHOUT ASSISTANCE.

TRIPLE IMPACT ANGUS SUPER EASY



THE SUPER EASY MIX CONTAINS BULLS THAT ARE RANKED THE HIGHEST IN OUR ANGUS SELECTION FOR £EMI WHICH GIVES THE COWS THE BEST CHANCE TO HAVE A PROFITABLE LACTATION. ALL SIRES IN THIS TRIPLE IMPACT MIX SCORE ABOVE £40 ON THE VALUE

FOR MORE INFORMATION CONTACT YOUR LOCAL GENETICS CONSULTANT OR CALL:

FREEPHONE: 0800 783 7258

Rawburn BLACK BUSH S420

4M
MALE

Sire: Bushs Strut 756 Dam: DBRL Blackbird 2N Ear Tag: UK562106102420 AI Code: AA1562


CBI
£84.10
EMI
£53.80
MVI
£30.30

LATEST PROGENY PICTURES


R


GESTATION LENGTH (D)	Longer	285		282	Shorter
CALVING DIFFICULTY (%)	Harder	5		1.0	Easier
CALF VIGOUR (UNITS)	- Vigorous	1		1.30	+ Vigorous
CALF QUALITY (%)	Poorer	80		95.9	Excellent
BIRTH WEIGHT (KG)	Lighter	0		5.00	Heavier

NOT FOR PEDIGREE USE

Quaker Hill DEAD CENTER

Sire: Exar Denver 2002B Dam: Quaker Hill Blackcap OA32 Ear Tag: US4017831035 AI Code: AA1369



CBI
£112.30

EMI
£85.80

MVI
£26.50

LATEST PROGENY PICTURES



R



GESTATION LENGTH (D)	Longer	285		278	Shorter
CALVING DIFFICULTY (%)	Harder	5		1.0	Easier
CALF VIGOUR (UNITS)	- Vigorous	1		1.40	+ Vigorous
CALF QUALITY (%)	Poorer	80		90.4	Excellent
BIRTH WEIGHT (KG)	Lighter	0		-4.90	Heavier

NOT FOR PEDIGREE USE

Melview **GREGOR** T271

Sire: Melview Grandville L076 Dam: Melview Gemima N149 Ear Tag:UK311688100271 AI Code: AA1587

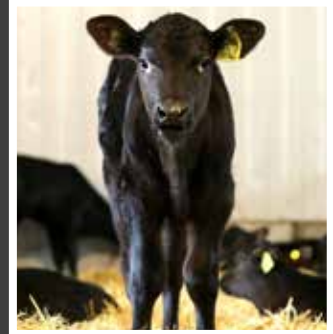


CBI
£76.40

EMI
£61.80

MVI
£14.60

LATEST PROGENY PICTURES



HIGH GENETIC SIRE

GESTATION LENGTH (D)	Longer	285		280	Shorter
CALVING DIFFICULTY (%)	Harder	5		2.1	Easier
CALF VIGOUR (UNITS)	- Vigorous	1		1.00	+ Vigorous
CALF QUALITY (%)	Poorer	80		91.3	Excellent
BIRTH WEIGHT (KG)	Lighter	0		1.70	Heavier

NOT FOR PEDIGREE USE

Morven

MR ALBERT

S792



Sire: Sydgen CC & 7 (SS) (IMP) Dam: Coldstream Miss Annie 124W Ear Tag: UK21115603792 AI Code: AA1595



CBI
£76.30

EMI
£65.20

MVI
£11.10

LATEST PROGENY PICTURES



R

GESTATION LENGTH (D)	Longer	285		279	Shorter
CALVING DIFFICULTY (%)	Harder	5		2.7	Easier
CALF VIGOUR (UNITS)	- Vigorous	1		1.20	+ Vigorous
CALF QUALITY (%)	Poorer	80		82.8	Excellent
BIRTH WEIGHT (KG)	Lighter	0		-2.70	Heavier

NOT FOR PEDIGREE USE

Goulding **PADDY** T859



Sire: Nightingale Ploughman G376 Dam: Goulding Patriot M531 Ear Tag: IE72214806880859 AI Code: AA1564



CBI
£69.70

EMI
£51.30

MVI
£18.40

LATEST PROGENY PICTURES



GESTATION LENGTH (D)	Longer	285		280	Shorter
CALVING DIFFICULTY (%)	Harder	5		4.1	Easier
CALF VIGOUR (UNITS)	- Vigorous	1		1.20	+ Vigorous
CALF QUALITY (%)	Poorer	80		88.0	Excellent
BIRTH WEIGHT (KG)	Lighter	0		-1.10	Heavier

NOT FOR PEDIGREE USE

Rawburn

EVOLUTION

U837

Sire: Rawburn Fast Ball P844 Dam: Rawburn Evening Star G705 Ear Tag: UK562106502837 AI Code: AA1693



CBI
£53.00

EMI
£28.40

MVI
£24.70

LATEST PROGENY PICTURES



GESTATION LENGTH (D)	Longer	285		283	Shorter
CALVING DIFFICULTY (%)	Harder	5		5.2	Easier
CALF VIGOUR (UNITS)	- Vigorous	1		1.60	+ Vigorous
CALF QUALITY (%)	Poorer	80		95.5	Excellent
BIRTH WEIGHT (KG)	Lighter	0		1.60	Heavier

NOT FOR PEDIGREE USE

Rawburn **KONG** T607



Sire: Rawburn Boss Hogg N630 Dam: Rawburn Kinannie J993 Ear Tag: UK652106602607 AI Code: AA1606



CBI
£65.80

EMI
£58.80

MVI
£7.00

LATEST PROGENY PICTURES



HIGH GENETIC SIRE

GESTATION LENGTH (D)	Longer	285		280	Shorter
CALVING DIFFICULTY (%)	Harder	5		2.9	Easier
CALF VIGOUR (UNITS)	- Vigorous	1		1.40	+ Vigorous
CALF QUALITY (%)	Poorer	80		81.6	Excellent
BIRTH WEIGHT (KG)	Lighter	0		0.20	Heavier

NOT FOR PEDIGREE USE

Blackhaugh **LUCAS** U848



Sire: K C F Bennett Absolute (SS) (IMP) Dam: Thomas Lucy Rose 41092 (ET) (IMP) Ear Tag: UK562121101848 AI Code: AA1705



CBI
£98.30

EMI
£88.20

MVI
£10.10

LATEST PROGENY PICTURES



GESTATION LENGTH (D)	Longer	285		276	Shorter
CALVING DIFFICULTY (%)	Harder	5		2.4	Easier
CALF VIGOUR (UNITS)	- Vigorous	1		1.40	+ Vigorous
CALF QUALITY (%)	Poorer	80		79.3	Excellent
BIRTH WEIGHT (KG)	Lighter	0		-1.40	Heavier

NOT FOR PEDIGREE USE

Cape Wrath

ELDAMAN

U793

Sire: Blackhaugh Iceman N356 Dam: Cape Wrath Elda L460 Ear Tag: UK502862 400793 AI Code: AA1713



CBI
£87.10

EMI
£72.90

MVI
£14.20

LATEST PROGENY PICTURES



GESTATION LENGTH (D)	Longer	285		277	Shorter
CALVING DIFFICULTY (%)	Harder	5		4.4	Easier
CALF VIGOUR (UNITS)	- Vigorous	1		1.50	+ Vigorous
CALF QUALITY (%)	Poorer	80		83.0	Excellent
BIRTH WEIGHT (KG)	Lighter	0		-0.40	Heavier

NOT FOR PEDIGREE USE

Lunevalley

MAJESTIC

U916

Sire: Quaker Hill Rampage 0A36 (SS) (IMP) Dam: Thomas Miss Jet 4861 (ET) (IMP) Ear Tag: UK103719 502916 AI Code: AA1651



CBI
£32.20

EMI
£26.10

MVI
£6.10

LATEST PROGENY PICTURES



R

GESTATION LENGTH (D)	Longer	285		284	Shorter
CALVING DIFFICULTY (%)	Harder	5		4.4	Easier
CALF VIGOUR (UNITS)	- Vigorous	1		1.50	+ Vigorous
CALF QUALITY (%)	Poorer	80		83.3	Excellent
BIRTH WEIGHT (KG)	Lighter	0		-0.10	Heavier

NOT FOR PEDIGREE USE

Auchenlay HITMAN

Sire: Mountjoy Utopia Dam: Auchenlay Bianca Ear Tag: UK542740 500435 AI Code: BB1316



CBI
£83.90

EMI
£51.50

MVI
£32.40

LATEST PROGENY PICTURES



R



GESTATION LENGTH (D)	Longer	285		280	Shorter
CALVING DIFFICULTY (%)	Harder	5		3.7	Easier
CALF VIGOUR (UNITS)	- Vigorous	1		1.40	+ Vigorous
CALF QUALITY (%)	Poorer	80		91.5	Excellent
BIRTH WEIGHT (KG)	Lighter	0		2.70	Heavier
BLUE ROAN (%)	0%	50%		87	100%

NOT FOR PEDIGREE USE

SUITABLE FOR USE IN EARLY LACTATION ONLY

Springhill **IMPROVEMENT**

Sire: Springhill Fabulous Dam: Springhill Elsie Ear Tag: UK933262903824 AI Code: BB1381



CBI
£88.30

EMI
£60.40

MVI
£27.90

LATEST PROGENY PICTURES



R



GESTATION LENGTH (D)	Longer	285	<div></div>	280	Shorter
CALVING DIFFICULTY (%)	Harder	5	<div></div>	2.8	Easier
CALF VIGOUR (UNITS)	- Vigorous	1	<div></div>	1.50	+ Vigorous
CALF QUALITY (%)	Poorer	80	<div></div>	90.7	Excellent
BIRTH WEIGHT (KG)	Lighter	0	<div></div>	4.90	Heavier
BLUE ROAN (%)	0%	50%	<div></div>	73	100%

NOT FOR PEDIGREE USE

SUITABLE FOR USE IN EARLY LACTATION ONLY

Kersey KARATE

Sire: Bringlee Ecstasy Dam: Kersey Frost Ear Tag: UK222596200980 AI Code: BB1440



CBI
£88.80

EMI
£73.70

MVI
£15.20

LATEST PROGENY PICTURES



GESTATION LENGTH (D)	Longer	285		279	Shorter
CALVING DIFFICULTY (%)	Harder	5		1.0	Easier
CALF VIGOUR (UNITS)	- Vigorous	1		1.60	+ Vigorous
CALF QUALITY (%)	Poorer	80		80.8	Excellent
BIRTH WEIGHT (KG)	Lighter	0		2.00	Heavier
BLUE ROAN (%)	0%	50%		67	100%

NOT FOR PEDIGREE USE

SUITABLE FOR USE IN EARLY LACTATION ONLY

Kersey **KINGPIN**



Sire: Auchenlay Echo Dam: Blue Mist Blossom Ear Tag: UK222596701013 AI Code: BB1489



CBI
£72.10

EMI
£61.50

MVI
£10.70

LATEST PROGENY PICTURES



GESTATION LENGTH (D)	Longer	285		280	Shorter
CALVING DIFFICULTY (%)	Harder	5		2.3	Easier
CALF VIGOUR (UNITS)	- Vigorous	1		1.60	+ Vigorous
CALF QUALITY (%)	Poorer	80		87.8	Excellent
BIRTH WEIGHT (KG)	Lighter	0		-1.30	Heavier
BLUE ROAN (%)	0%	50%		88	100%

NOT FOR PEDIGREE USE

Springhill **LALA**

Sire: Winston Van Perenof Dam: Springhill Cathy Ear Tag: UK933293500157 AI Code: BB1558



CBI
£91.50

EMI
£69.70

MVI
£21.80

LATEST PROGENY PICTURES



GESTATION LENGTH (D)	Longer	285		279	Shorter
CALVING DIFFICULTY (%)	Harder	5		1.9	Easier
CALF VIGOUR (UNITS)	- Vigorous	1		1.20	+ Vigorous
CALF QUALITY (%)	Poorer	80		97.5	Excellent
BIRTH WEIGHT (KG)	Lighter	0		-0.60	Heavier
BLUE ROAN (%)	0%	50%		82	100%

NOT FOR PEDIGREE USE

Maidenlands

MARSHALL

Sire: Twyning Ash Ukulele Dam: 5677 T Hof Tef Zilverberg Ear Tag: UK104493500509 AI Code: BB1578



CBI
£86.50

EMI
£53.50

MVI
£33.00

LATEST PROGENY PICTURES



GESTATION LENGTH (D)	Longer	285		281	Shorter
CALVING DIFFICULTY (%)	Harder	5		2.0	Easier
CALF VIGOUR (UNITS)	- Vigorous	1		1.30	+ Vigorous
CALF QUALITY (%)	Poorer	80		94.5	Excellent
BIRTH WEIGHT (KG)	Lighter	0		-1.10	Heavier
BLUE ROAN (%)	0%	50%		98	100%

NOT FOR PEDIGREE USE

Kelowna MOJO



Sire: Kersey Geronimo Dam: Kelowna Brandy Ear Tag: UK102530701212 AI Code: BB1588



CBI
£59.90

EMI
£36.50

MVI
£23.40

LATEST PROGENY PICTURES



GESTATION LENGTH (D)	Longer	285		284	Shorter
CALVING DIFFICULTY (%)	Harder	5		1.0	Easier
CALF VIGOUR (UNITS)	- Vigorous	1		1.30	+ Vigorous
CALF QUALITY (%)	Poorer	80		91.4	Excellent
BIRTH WEIGHT (KG)	Lighter	0		-1.10	Heavier
BLUE ROAN (%)	0%	50%		94	100%

NOT FOR PEDIGREE USE

Kersey **NIMROD**

Sire: Maidenlands Force Dam: Kersey Flash Ear Tag: UK222596701160 AI Code: BB1674



CBI
£73.80

EMI
£56.90

MVI
£16.90

LATEST PROGENY PICTURES



GESTATION LENGTH (D)	Longer	285		281	Shorter
CALVING DIFFICULTY (%)	Harder	5		1.0	Easier
CALF VIGOUR (UNITS)	- Vigorous	1		1.60	+ Vigorous
CALF QUALITY (%)	Poorer	80		89.9	Excellent
BIRTH WEIGHT (KG)	Lighter	0		1.00	Heavier
BLUE ROAN (%)	0%	50%		87	100%

NOT FOR PEDIGREE USE

Kersey **NEWTON**

Sire: Bringlee Ecstasy Dam: Kersey Flash Ear Tag: UK222596301142 AI Code: BB1672



CBI
£99.10

EMI
£78.60

MVI
£20.50

LATEST PROGENY PICTURES



GESTATION LENGTH (D)	Longer	285		278	Shorter
CALVING DIFFICULTY (%)	Harder	5		1.2	Easier
CALF VIGOUR (UNITS)	- Vigorous	1		1.20	+ Vigorous
CALF QUALITY (%)	Poorer	80		94.6	Excellent
BIRTH WEIGHT (KG)	Lighter	0		0.80	Heavier
BLUE ROAN (%)	0%	50%		75	100%

NOT FOR PEDIGREE USE

Kersey **NICKEL**

Sire: Bringlee Ecstasy Dam: Kersey Flash Ear Tag: UK222596201141 AI Code: BB1673



CBI
£81.90

EMI
£65.50

MVI
£16.40

LATEST PROGENY PICTURES



GESTATION LENGTH (D)	Longer	285		280	Shorter
CALVING DIFFICULTY (%)	Harder	5		1.0	Easier
CALF VIGOUR (UNITS)	- Vigorous	1		1.40	+ Vigorous
CALF QUALITY (%)	Poorer	80		89.2	Excellent
BIRTH WEIGHT (KG)	Lighter	0		1.50	Heavier
BLUE ROAN (%)	0%	50%		73	100%

NOT FOR PEDIGREE USE

Kersey **NIMBUS**



Sire: Springhill Improvement Dam: Kersey Kitkat Ear Tag: UK222596201204 AI Code: BB1716



CBI
£85.40

EMI
£66.90

MVI
£18.50

LATEST PROGENY PICTURES



GESTATION LENGTH (D)	Longer	285		280	Shorter
CALVING DIFFICULTY (%)	Harder	5		1.0	Easier
CALF VIGOUR (UNITS)	- Vigorous	1		1.50	+ Vigorous
CALF QUALITY (%)	Poorer	80		88.3	Excellent
BIRTH WEIGHT (KG)	Lighter	0		0.10	Heavier
BLUE ROAN (%)	0%	50%		88	100%

NOT FOR PEDIGREE USE

Topside

NO HORNS

#1 (P)

Sire: Kubitus De Bray Dam: Top Side Lass Ear Tag: UK115268400134 AI Code: BB1733



CBI

£66.10

EMI

£44.70

MVI

£21.40

LATEST PROGENY PICTURES



GESTATION LENGTH (D)	Longer	285		283	Shorter
CALVING DIFFICULTY (%)	Harder	5		1.1	Easier
CALF VIGOUR (UNITS)	- Vigorous	1		1.60	+ Vigorous
CALF QUALITY (%)	Poorer	80		91.9	Excellent
BIRTH WEIGHT (KG)	Lighter	0		1.50	Heavier
BLUE ROAN (%)	0%	50%		49	100%

NOT FOR PEDIGREE USE

GOLF

Sire: Vaudo Dam: Delta Ear Tag: FR4241721964 AI Code: CH4126



CBI

£80.20

EMI

£44.40

MVI

£35.80

LATEST PROGENY PICTURES



GESTATION LENGTH (D)	Longer	285		284	Shorter
CALVING DIFFICULTY (%)	Harder	5		1.0	Easier
CALF VIGOUR (UNITS)	- Vigorous	1		1.30	+ Vigorous
CALF QUALITY (%)	Poorer	80		99.0	Excellent
BIRTH WEIGHT (KG)	Lighter	0		7.20	Heavier

NOT FOR PEDIGREE USE

Netherhall 1

0Z DAFFY

M024



Sire: Wirruna Daffy D1 Dam: Wirruna Last Day E163 Ear Tag: UK103719202024 AI Code: H9375



CBI

£56.70

EMI

£35.40

MVI

£21.20

LATEST PROGENY PICTURES



R



GESTATION LENGTH (D)	Longer	285	285	Shorter
CALVING DIFFICULTY (%)	Harder	5	1.0	Easier
CALF VIGOUR (UNITS)	- Vigorous	1	1.20	+ Vigorous
CALF QUALITY (%)	Poorer	80	86.7	Excellent
BIRTH WEIGHT (KG)	Lighter	0	-4.40	Heavier

Netherhall 1 **JACK** P602(P)

Sire: Wirruna Jack J12 Dam: Netherhall 1 Oz Tigress M018 Ear Tag: UK103719602602 AI Code: H9322



CBI
£72.80

EMI
£49.20

MVI
£23.60

LATEST PROGENY PICTURES



R

GESTATION LENGTH (D)	Longer	285		283	Shorter
CALVING DIFFICULTY (%)	Harder	5		1.0	Easier
CALF VIGOUR (UNITS)	- Vigorous	1		1.20	+ Vigorous
CALF QUALITY (%)	Poorer	80		81.0	Excellent
BIRTH WEIGHT (KG)	Lighter	0		-6.80	Heavier

Netherhall 1

MATTY

S098

Sire: Wirruna Matty M288 Dam: Wirruna Victoria G7 Ear Tag: UK103719 503098 AI Code: H9277



CBI

£107.70

EMI

£86.80

MVI

£20.90

LATEST PROGENY PICTURES



R

PROVISIONAL
DATA

GESTATION LENGTH (D)	Longer	285		275	Shorter
CALVING DIFFICULTY (%)	Harder	5		1.0	Easier
CALF VIGOUR (UNITS)	- Vigorous	1		1.10	+ Vigorous
CALF QUALITY (%)	Poorer	80		95.0	Excellent
BIRTH WEIGHT (KG)	Lighter	0		0.70	Heavier

Elite **LACETTE**



Sire: Ampertaine Foreman Dam: Ardlea Gig Ear Tag: IE221062721390 AI Code: LN2755



CBI
£48.00

EMI
£14.70

MVI
£33.30

LATEST PROGENY PICTURES



R

GESTATION LENGTH (D)	Longer	<div></div>	285	<div></div>	287	Shorter
CALVING DIFFICULTY (%)	Harder		5	<div></div>	1.7	Easier
CALF VIGOUR (UNITS)	- Vigorous		1	<div></div>	1.40	+ Vigorous
CALF QUALITY (%)	Poorer		80	<div></div>	93.9	Excellent
BIRTH WEIGHT (KG)	Lighter		0	<div></div>	3.30	Heavier

SUITABLE FOR USE IN EARLY LACTATION ONLY

Twemlows **OFFICER**



Sire: Ampertaine Commander Dam: Twemlows Hum Ear Tag: UK 305928/401634 AI Code: LN2844



CBI
£88.28

EMI
£38.21

MVI
£50.07

LATEST PROGENY PICTURES



R

PROVISIONAL
DATA

GESTATION LENGTH (D)	Longer	285		284	Shorter
CALVING DIFFICULTY (%)	Harder	5		1.0	Easier
CALF VIGOUR (UNITS)	- Vigorous	1		1.20	+ Vigorous
CALF QUALITY (%)	Poorer	80		99.0	Excellent
BIRTH WEIGHT (KG)	Lighter	0		-0.20	Heavier

Twemlows

NOSTRADAMUS

Sire: Swarland Eddie Dam: Twemlows Destiny Ear Tag: UK 305928/701616 AI Code: LN2826



CBI

£73.28

EMI

£24.59

MVI

£48.69

LATEST PROGENY PICTURES



R

PROVISIONAL
DATA

GESTATION LENGTH (D)	Longer	285	286	Shorter
CALVING DIFFICULTY (%)	Harder	5	1.0	Easier
CALF VIGOUR (UNITS)	- Vigorous	1	1.10	+ Vigorous
CALF QUALITY (%)	Poorer	80	99.0	Excellent
BIRTH WEIGHT (KG)	Lighter	0	-1.70	Heavier

SUITABLE FOR USE IN EARLY LACTATION ONLY

Blackbrook

BAKEWELL**4M**TM
MALE

Sire: Blackbrook Richester Dam: Blackbrook Zoella VG85 Ear Tag: UK200538101026 AI Code: LH0914



We are excited to be able to offer semen from this exceptional bull. The Blackbrook herd has been selected and developed for natural fleshing cattle that grow quickly and suit every system. Bakewell, is an exceptional bull that displays outstanding length over his loin and muscle development throughout. Bakewell is full brother to the renowned Blackbrook Philosopher. This bull will provide exceptional calf quality with easy calving credentials as you would expect from this breed.

SINCE **B** 1922
BUITELAAR
GROUP

**FIXED, FORWARD PRICED
CONTRACTS AVAILABLE.**

Tel: +44 (0) 1244579400

www.buitelaargroup.com

MR NANASHI

Sire: Sanjiro 3 2 Dam: Nanashi ET HOH 3U LE 320 Ear Tag: DE0954826447 AI Code: MS0070



Mr Nanashi is the latest addition to our Wagyu line up. The sire holds a fantastic pedigree through both maternal and paternal side. His dam Nanashi is very highly regarded by wagyu breeders across the world for her length, depth, and overall conformation. The sire Sanjiro 3 (FB2900) is a full brother to the original Sanjiro and the highest-ranking carcass and marbling bull in the entire Wagyu breed. We predict that Mr Nanashi's progeny will be extremely easy calving and have exceptional marbling throughout their carcasses.

MR HARUKOE

Sire: World K's Haruki 2 Dam: CHR MS Sanjiro 320 Ear Tag: DE0360343401 AI Code: MS0057



Mr Harukoe has a very special pedigree. His sire is World K's Haruki 2, one of the original Japanese bulls who was exported from Japan to USA in 1993. This bull was recognised for exceptional carcass quality. His maternal grand sire is Sanjiro, who is one of the great marbling bulls. We expect this bull to provide exceptional marbling with outstanding carcass conformation.



Precision

THE VERY BEST IN HEALTH AND FERTILITY SOLUTIONS

- **PrecisionDNA**
High density genomic testing
- **PrecisionMAP**
Genetic auditing tool exclusive to customers
- **PrecisionMATCH**
Industry leading mating programme
- **PrecisionREPRO**
Whole herd fertility service

With our extensive and globally renowned bull portfolio and our unique Precision package, Cogent have the solution to maximise breeding efficiencies and increase genetic gain. Cogent use the very best of technology to simplify your breeding from decision making to insemination whilst gaining profit per pregnancy.

BREEDING INNOVATION



Call Freephone: **0800 783 7258** for more information

www.cogentuk.com

AHDB NATIONAL BEEF EVALUATIONS

THE AHDB NATIONAL BEEF EVALUATIONS PROVIDE A SET OF FIVE ESTIMATED BREEDING VALUES (EBVS) THAT ALLOW BREEDERS TO DIRECTLY SELECT BULLS BASED ON THEIR GENETIC POTENTIAL FOR CARCASE PERFORMANCE. THESE FIVE NEW EBVS ARE :

CARCASE WEIGHT (KG)
CARCASE CONFORMATION (EUROP CLASSIFICATION)
CARCASE FAT CLASS (EUROP CLASSIFICATION)
SLAUGHTER AGE (DAYS)
AVERAGE DAILY CARCASE GAIN (KG)

THESE EBVS ARE GENERATED BY COMBINING LARGE VOLUMES OF NATIONAL DATA FROM BCMS, PROCESSORS AND BREED SOCIETIES, GIVING HIGH ACCURACY FIGURES FOR BULLS THAT HAVE HAD PROGENY SLAUGHTERED.

BULL NAME	BREED	AHDB Evaluations	22/06/2021			
		Days to slaughter	Carcass weight	Carcass conformation	Carcass fat class	ADCG
Rawburn Blackbush S420	Aberdeen Angus	9.33	3.89	-0.05	1.77	0
Quaker Hill Dead Center	Aberdeen Angus	-49.42	-14.93	-2.33	0.48	0.01
Blackhaugh Diego S689	Aberdeen Angus	-14.99	3.5	-0.69	1.45	0.02
Melview Gregor	Aberdeen Angus	-12.09	0.42	-1.19	-0.3	0.01
Dunlouse Earliston S629	Aberdeen Angus	-8.77	-28.88	-1.49	4.7	-0.04
Rawburn Evolution U837	Aberdeen Angus	-13.43	14.04	-0.26	-0.25	0.03
Rawburn Kong T607	Aberdeen Angus	-1.45	5.76	0.55	0.29	0.01
Auchenlay Hitman	British Blue	-11.41	5.49	1.98	-3.3	0.01
Springhill Improvement	British Blue	-22.98	11.15	2.86	-3.93	0.03
Kersey Karate	British Blue	-36.1	8.65	3.1	-1.31	0.03
Kersey Kingpin	British Blue	5.25	15.64	2.41	-4.55	0.02
Maidenlands Marshall	British Blue	7.97	10.37	1.25	-2.46	0.01
Kelowna Mojo	British Blue	9.9	10.63	3.46	-4.67	0
Kersey Nimrod	British Blue	6.82	4.29	1.73	-3.2	0
Kersey Newton	British Blue	11.51	13.3	3.44	-3.36	0.01
Kersey Nickel	British Blue	11.51	13.3	3.44	-3.36	0.01
Golf	Charolais	-1.77	6.80	2.54	-4.08	-0.01
Netherhall 1 Oz Daffy	Hereford	-30.76	-20.46	-2.03	2.65	-0.02
Netherhall 1 Jack	Hereford	-39.4	-11.89	-0.7	3.55	0.01
Elite Lacette	Limousin	-15.09	5.22	0.53	0.68	0.03

FOR FURTHER DETAILS, PLEASE SEE [HTTPS://AHDB.ORG.UK/KNOWLEDGE-LIBRARY/NATIONAL-BEEF-EVALUATIONS](https://ahdb.org.uk/knowledge-library/national-beef-evaluations)



PATHWAY

What are the advantages for the dairy farmer?

Pathway Farming are an integrated beef company, specialising in the production of high quality Angus beef for premium retailers. Cogent and Pathway partnered in 2019 to develop a programme which will accelerate genetic improvements within the breed.

Gain access to competitively priced exclusive Aberdeen Angus bulls from Cogent, proven to have short gestation length and low birth

weights, we collect direct from farms in TB-free, TB4 and TB1 areas (Male HF bull calves also purchased in TB1 areas) with payment via BACS and no commission. Male SexedULTRA 4M is available on selected bulls. A major benefit of working with us is our long term, very competitive, fixed price contracts, available for up to 24 months and we also offer quality benchmarked feedback on calf performance through to finishing.

**COGENT ANGUS X CALVES ARE THE PERFECT FIT
FOR PATHWAY FARMING SUPPLY CHAIN.**



What are we looking for?

- **Fit, healthy calves, minimum 43kg weight** (12-40 days of age)
- **HF type cows, minimum bodyweight 550kg**
- **Good colostrum management**
- **Known health status of herd**
- **Sire Ear Tag typed onto passports**
- **AYR or block calving herds**

Whether you have Aberdeen Angus calves available now or are interested in switching over in the future, get in touch.

Email: info@pathwayfarming.co.uk **Tel:** 01989 495101

 @pathwayfarming

 @Pathway _Farming

THE TRAIT LEADERS

The Cogent Beef sires that feature in these trait leader tables are Proven bulls that have been ranked according to their EMI, MVI, calving ease and gestation length scoring. These rankings are highlighted to enable you to make comparisons between bulls and to allow you to select the most suitable beef genetics for your herd.

NATIVE EASE OF MANAGEMENT IMPACT (£EMI)



1	Blackhaugh Lucas	88.2
2	Quaker Hill Dead Center	85.8
3	Cape Wrath Eldaman	72.9
4	Morven Mr Albert	65.2

NATIVE GESTATION LENGTH



1	Blackhaugh Lucas	276
2	Cape Wrath Eldaman	277
3	Quaker Hill Dead Center	278
4	Morven Mr Albert	279

NATIVE MARKET VALUE IMPACT (£MVI)



1	Rawburn Blackbush	30.3
2	Quaker Hill Dead Center	26.5
3	Rawburn Evolution	24.7
4	Netherhall Jack	23.6

NATIVE CALVING EASE



1	Netherhall Jack	1
2	Netherhall 1 Oz Daffy	1
3	Quaker Hill Dead Center	1
4	Rawbush Black Bush	1

#SHOUTABOUTT

CONTINENTAL EASE OF MANAGEMENT IMPACT (£EMI)

1	Kersey Newton	78.6
2	Kersey Karate	73.7
3	Springhill Lala	69.7
4	Kersey Nimbus	66.9

CONTINENTAL GESTATION LENGTH

1	Kersey Newton	278
2	Kersey Karate	279
3	Springhill Lala	279
4	Kersey Nimbus	280

CONTINENTAL MARKET VALUE IMPACT (£MVI)

1	Golf	35.8
2	Elite Lacette	33.3
3	Auchenlay Hitman	32.4
4	Springhill Improvement	27.9

CONTINENTAL CALVING EASE

1	Kersey Nimbus	1
2	Kersey Nickel ET	1
3	Kelowna Mojo	1
4	Kersey Nimrod	1

HESIRE

TAKING OUR INDUSTRY HIGHER WITH **AHDB**

REGISTERING ALL SIRES ON BCMS HELPS US TO
PROVIDE MORE DATA ON THE SIRES YOU CHOOSE.



THE VALUE OF PURITY

- ✓ HIGHER FERTILITY
- ✓ HIGHEST PURITY
- ✓ 100% UK PROVEN



Did you know that the purity of your straw alone could lead to additional gains on farm, purely by breeding more heifer calves? Cogent continue to be at the forefront of research and innovation of sexed semen technology and strive to gain farmer **profitability through each % of improvement.**

Sexed**ULTRA**
4M

WHICH COULD LEAD
TO AN EXTRA

£1029.40 * per year

OVER A LOWER
PURITY PRODUCT

WHY SETTLE FOR LESS?

WHEN YOU CAN **GET MORE** FOR A SIMILAR PRICE?

To find out your potential gains through using
a superior pure product, please call free on:

FREEPHONE: 0800 783 7258

Part of the **STgenetics** group.

www.stgen.com



*Based on a 200 cow herd with a 40% conception rate, using 61% purity (Sexed ULTRA 4M) and 97% purity (4M High Purity) **Based on 4M High Purity maximum gender accuracy

PRIMESTART COLOSTRUM

A complete replacer for the newborn calf



European Derived, High Health
Status Colostrum Ingredient:

**FREE
FROM**



TB



EBL



IBR



JOHNES

Give Your Calves The Best Start To Life

FREEPHONE: 0800 783 7258

www.cogentuk.com

