

cogentuk.com



cogent™



BEEF IMPACT

SPRING
2022
CATALOGUE

Part of the **STgenetics** group.
www.stgen.com

BREEDING INNOVATION

ABERDEEN-ANGUS

- 6 RAWBURN BLACKBUSH
- 7 QUAKER HILL DEAD CENTRE
- 8 MORVEN MR ALBERT S792
- 9 BLACKHAUGH LUCAS U848
- 10 CAPE WRATH ELDAMAN U793
- 11 LUNEVALLEY MAJESTIC U916
- 12 CHAPELTON EAGLE V224
- 13 BLACKHAUGH INGER U847

BRITISH BLUE

- 16 AUCHENLAY HITMAN
- 17 SPRINGHILL IMPROVEMENT
- 18 KERSEY KARATE
- 19 KERSEY KINGPIN
- 20 SPRINGHILL LALA
- 21 KELOWNA MOJO
- 22 KERSEY NIMROD
- 23 KERSEY NEWTON
- 24 KERSEY NICKEL
- 25 KERSEY NIMBUS
- 26 TOPSIDE NO HORNS
- 27 KERSEY ORION
- 28 KELOWNA OPIUM

CHAROLAIS

- 29 NIAGARA
- 29 LUTIN PP

HEREFORD

- 31 NETHERHALL 1 OZ DAFFY
- 32 NETHERHALL 1 JACK P602
- 33 NETHERHALL 1 MATTY S098

LIMOUSIN

- 34 ELITE LACETTE
- 35 TWEMLOWS OFFICER

LONGHORN

- 36 BLACKBROOK BAKEWELL

WAGYU

- 38 MR NANASHI



PROVEN – Proven sire with over 100 calving surveys.



4M SEXED – Sire is available in Male SexedULTRA 4M.



ROYALTY – Sire is eligible for royalty fee for any progeny that is registered as pedigree.



PROVISIONAL DATA – For sires that have under 100 calvings



MEADOW QUALITY – Meadow quality approved Superior Sire Scheme.



BUITELAAR - Buitelaar approved selected sire scheme.



HIGH GENETIC SIRE – Tesco integrated beef scheme

NOT FOR PEDIGREE USE
Progeny born from this sire can not be registered as pedigree, for commercial use only.

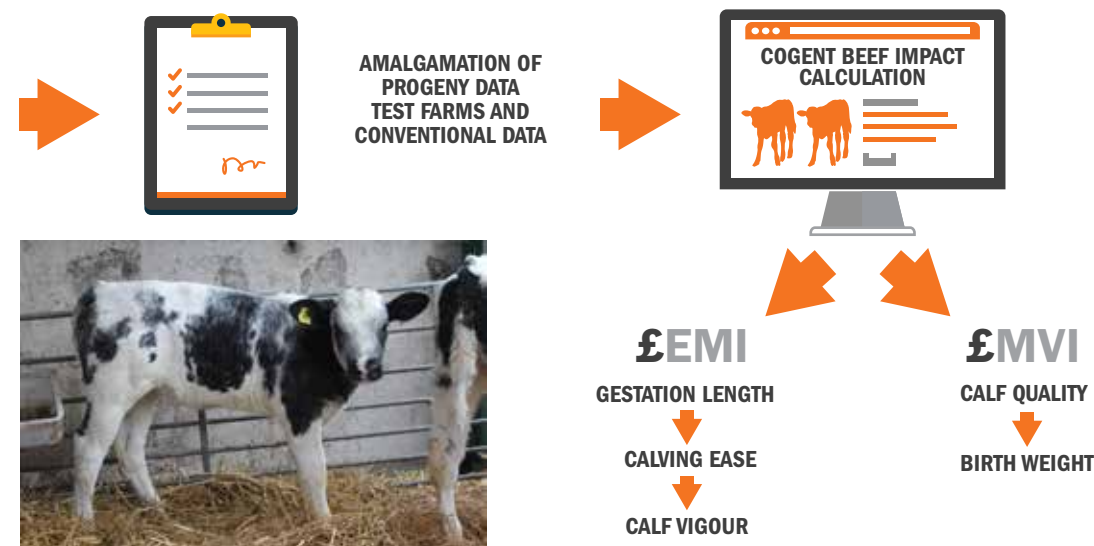
EARLY LACTATION ONLY
It is recommended that this sire is used in early lactation cows to avoid problems associated with older cows at the point of calving.

COGENT BEEF INDEX

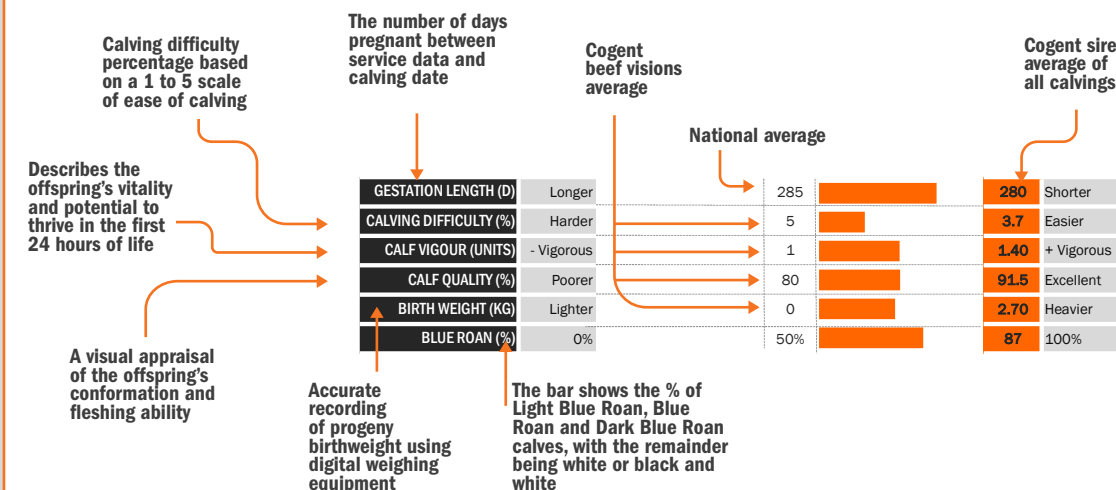
Beef Visions, Cogent's bespoke progeny testing programme, continues to develop and improve its processes to gain more accurate and reliable bull data on it's bulls, for UK dairy farmers. More semen than ever before is entering a large number of test farms and Visions farms UK-wide, with the aim of graduating more beef bulls with superior genetics. Improvement in the performance recording of both sire and progeny has allowed for larger and more accurate datasets.

ON-FARM QUALITY ASSESSMENT

The on-farm assessment of quality scoring consists of an overall visual inspection of the calf as well as a manual hands-on approach where the loin, ribs, rump, and shoulder are physically examined to determine the quality grade. The grade is based on the fullness and fleshing cover over these four points as well as an overall conformation / muscle formation. The grade is then scored on a 1-5 scale 1 being poor and 5 being excellent. Raw birthweights are now recorded using approved equipment and are analysed based on their deviation from the Cogent breed group average.



UNDERSTANDING OUR DATA



A PROVEN BEEF VALUE PROGRAMME FOR THE MODERN DAY DAIRY FARMER

The main goal of the Cogent Beef Breeding Programme is to ensure selection of bulls that can perform in any system, that is why Cogent has partnered with some of the most forward thinking, progressive beef herds in the UK. Working with breeders that implement high herd health plans ensures bulls selected for the programme are free from all diseases such as IBR, BVD, Lepto and Johne's before entering the EU facility. By utilising advanced breeding technologies, Cogent can create multiple pregnancies from programme leading males and females to ensure

they are bringing the correct genetics into the stud. Cogent boasts a state-of-the-art bull stud providing high performance, high quality semen to both UK and international markets. The production facility aims to produce a disease-free product that allows our customers to enjoy the benefits of the beef genetics programme. The quality of the beef semen and advancements in technology and sorting procedures allows Cogent to provide male sexed semen with greater than 90% gender purity, and quality control parameters to match the sexedULTRA 4M offering.



CBL Non-Stop



CBL Plasma



Steve Pattinson and family

Andrew Elliot and family



Chris and Sarah Partridge



"THROUGH OUR PARTNERSHIP WITH COGENT, KERSEY BRITISH BLUE BULLS ARE HAVING A POSITIVE INFLUENCE ON THE BEEF AND DAIRY INDUSTRIES"
CHRIS PARTRIDGE, KERSEY BRITISH BLUES

Rawburn

BLACK BUSH

S420

Sire: Bushs Strut 756 Dam: DBRL Blackbird 2N Ear Tag: UK562106102420 AI Code: AA1562



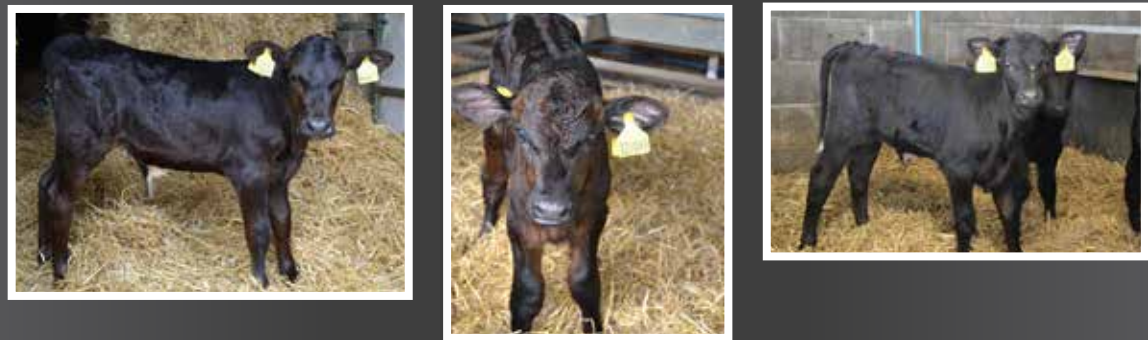
CBI
£72.20

EMI
£44.30

MVI
£27.90



LATEST PROGENY PICTURES



R



GESTATION LENGTH (D)	Longer	285		282	Shorter
CALVING DIFFICULTY (%)	Harder	5		2.4	Easier
CALF VIGOUR (UNITS)	- Vigorous	1		1.30	+ Vigorous
CALF QUALITY (%)	Poorer	80		95.9	Excellent
BIRTH WEIGHT (KG)	Lighter	0		5.00	Heavier

Quaker Hill

DEAD CENTER

Sire: Exar Denver 2002B Dam: Quaker Hill Blackcap 0A32 Ear Tag: US4017831035 AI Code: AA1369



CBI
£112.30

EMI
£85.80

MVI
£26.50

LATEST PROGENY PICTURES



R



GESTATION LENGTH (D)	Longer	285		278	Shorter
CALVING DIFFICULTY (%)	Harder	5		1.0	Easier
CALF VIGOUR (UNITS)	- Vigorous	1		1.40	+ Vigorous
CALF QUALITY (%)	Poorer	80		90.4	Excellent
BIRTH WEIGHT (KG)	Lighter	0		-4.90	Heavier

Morven **MR ALBERT** S792

Sire: Sydgen CC & 7 (SS) (IMP) Dam: Coldstream Miss Annie 124W Ear Tag: UK21115603792 AI Code: AA1595

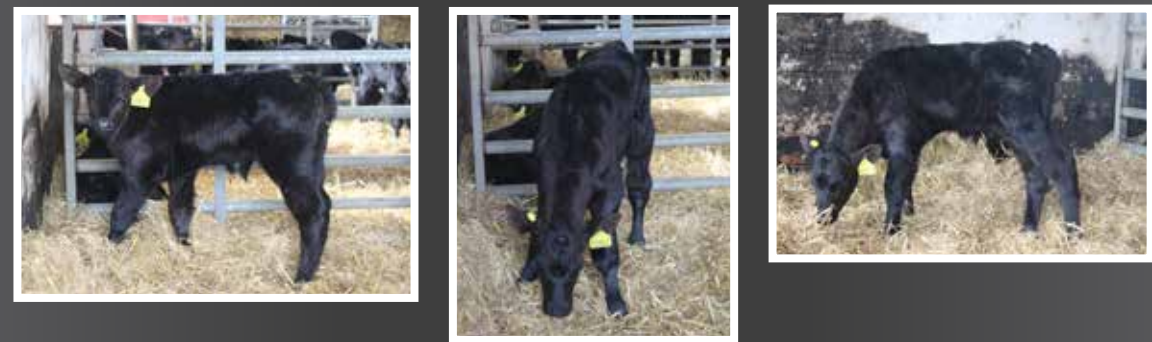


CBI
£76.30

EMI
£65.20

MVI
£11.10

LATEST PROGENY PICTURES





PROVEN

R



MEADOW QUALITY
LIVESTOCK TRADING SINCE 1975

GESTATION LENGTH (D)	Longer	285		279	Shorter
CALVING DIFFICULTY (%)	Harder	5		2.7	Easier
CALF VIGOUR (UNITS)	- Vigorous	1		1.20	+ Vigorous
CALF QUALITY (%)	Poorer	80		82.8	Excellent
BIRTH WEIGHT (KG)	Lighter	0		-2.70	Heavier

Blackhaugh **LUCAS** U848

Sire: K C F Bennett Absolute (SS) (IMP) Dam: Thomas Lucy Rose 41092 (ET) (IMP) Ear Tag: UK562121101848 AI Code: AA1705

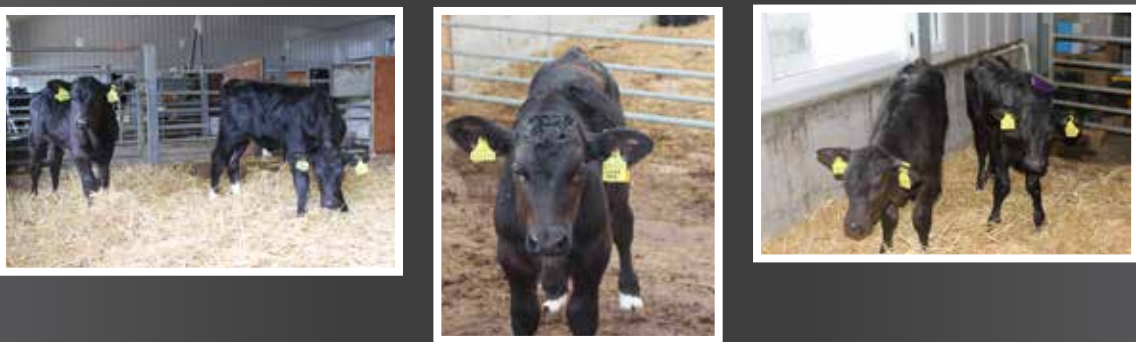


CBI
£101.0

EMI
£86.40

MVI
£14.60

LATEST PROGENY PICTURES





HIGH GENETIC SIRE

GESTATION LENGTH (D)	Longer	285		277	Shorter
CALVING DIFFICULTY (%)	Harder	5		1.8	Easier
CALF VIGOUR (UNITS)	- Vigorous	1		1.40	+ Vigorous
CALF QUALITY (%)	Poorer	80		82.9	Excellent
BIRTH WEIGHT (KG)	Lighter	0		-1.70	Heavier

NOT FOR PEDIGREE USE

Cape Wrath **ELDAMAN** U793

Sire: Blackhaugh Iceman N356 Dam: Cape Wrath Elda L460 Ear Tag: UK502862 400793 AI Code: AA1713



CBI
£95.80

EMI
£79.80

MVI
£16.00



LATEST PROGENY PICTURES



Lunevalley **MAJESTIC** U916

Sire: Quaker Hill Rampage 0A36 (SS) (IMP) Dam: Thomas Miss Jet 4861 (ET) (IMP) Ear Tag: UK103719 502916 AI Code: AA1651



CBI
£42.20

EMI
£26.10

MVI
£16.10



LATEST PROGENY PICTURES



HIGH GENETIC SIRE

GESTATION LENGTH (D)	Longer	285		277	Shorter
CALVING DIFFICULTY (%)	Harder	5		2.7	Easier
CALF VIGOUR (UNITS)	- Vigorous	1		1.40	+ Vigorous
CALF QUALITY (%)	Poorer	80		83.8	Excellent
BIRTH WEIGHT (KG)	Lighter	0		-0.10	Heavier

NOT FOR PEDIGREE USE

GESTATION LENGTH (D)	Longer	285		284	Shorter
CALVING DIFFICULTY (%)	Harder	5		4.4	Easier
CALF VIGOUR (UNITS)	- Vigorous	1		1.50	+ Vigorous
CALF QUALITY (%)	Poorer	80		83.3	Excellent
BIRTH WEIGHT (KG)	Lighter	0		-0.10	Heavier

NOT FOR PEDIGREE USE

Chapelton **EAGLE** V224

Sire: Chapelton Europa R231 Dam: Chapelton Erica T792 Ear Tag: UK582662 306224 AI Code: AA1721



CBI
£59.00

EMI
£54.10

MVI
£5.00

LATEST PROGENY PICTURES



Blackhaugh **INGER** U847

Sire: Blackhaugh Krocus L086 Dam: Blackhaugh Ina P391 Ear Tag: UK562121 701847 AI Code: AA1714



CBI
£66.40

EMI
£57.50

MVI
£8.80

LATEST PROGENY PICTURES



HIGH GENETIC SIRE

GESTATION LENGTH (D)	Longer	285		281	Shorter
CALVING DIFFICULTY (%)	Harder	5		2.3	Easier
CALF VIGOUR (UNITS)	- Vigorous	1		1.50	+ Vigorous
CALF QUALITY (%)	Poorer	80		75.3	Excellent
BIRTH WEIGHT (KG)	Lighter	0		2.80	Heavier

NOT FOR PEDIGREE USE

GESTATION LENGTH (D)	Longer	285		279	Shorter
CALVING DIFFICULTY (%)	Harder	5		2.5	Easier
CALF VIGOUR (UNITS)	- Vigorous	1		1.20	+ Vigorous
CALF QUALITY (%)	Poorer	80		88.0	Excellent
BIRTH WEIGHT (KG)	Lighter	0		-0.50	Heavier

NOT FOR PEDIGREE USE



The **TRIPLE IMPACT** mixes contain fertility enhancing semen that features three bulls with variations in semen maturation. All the triple mixes provide consistent quality calves that are easily managed and full of vitality.

This product has been designed for UK dairy farmers and provides our customers with consistent calving ease.

TRIPLE

IMPACT

TRIPLE IMPACT EMI



EASE OF MANAGEMENT IS AIMED AT CUSTOMERS WANTING TO CAPITALISE ON LIVE AND VIGOROUS CALVES BORN WITHOUT ASSISTANCE. ALL BULLS FEATURED IN THIS TRIPLE IMPACT EMI MIX SCORE ABOVE £40 ON THEIR EMI VALUE. AVAILABLE IN SEXED ULTRA 4M

TRIPLE IMPACT HEREFORD



A COMBINATION OF 3 HEREFORD SIRES THAT ARE DESIGNED TO PRODUCE CALVES THAT ARE EASILY BORN WITHOUT ASSISTANCE AND WITH HIGH VIGOUR AT BIRTH.

TRIPLE IMPACT ANGUS



AVAILABLE IN MALE SEXED ULTRA 4M THIS MIX IS AIMED AT CUSTOMERS WANTING TO CAPITALISE ON LIVE VIGOROUS ABERDEEN ANGUS CALVES BORN WITHOUT ASSISTANCE.

TRIPLE IMPACT ANGUS SUPER EASY



THE SUPER EASY MIX CONTAINS BULLS THAT ARE RANKED THE HIGHEST IN OUR ANGUS SELECTION FOR £EMI WHICH GIVES THE COWS THE BEST CHANCE TO HAVE A PROFITABLE LACTATION. ALL SIRES IN THIS TRIPLE IMPACT MIX SCORE ABOVE £40 ON THE VALUE

ALL TRIPLE MIXES ARE NOT SUITABLE FOR PEDIGREE USE AND ALL HAVE RELEVANT SIRE IDENTIFICATION PRINTED ON THE STRAWS. THIS SHOULD BE RECORDED AT THE TIME OF SERVICE.

FOR MORE INFORMATION CONTACT YOUR LOCAL GENETICS CONSULTANT OR CALL:

FREEPHONE: 0800 783 7258

Auchenlay **HITMAN**

Sire: Mountjoy Utopia Dam: Auchenlay Bianca Ear Tag: UK542740 500435 AI Code: BB1316



CBI
£78.30

EMI
£47.30

MVI
£31.00

LATEST PROGENY PICTURES



R



GESTATION LENGTH (D)	Longer	285	<div></div>	280	Shorter
CALVING DIFFICULTY (%)	Harder	5	<div></div>	4.8	Easier
CALF VIGOUR (UNITS)	- Vigorous	1	<div></div>	1.40	+ Vigorous
CALF QUALITY (%)	Poorer	80	<div></div>	91.5	Excellent
BIRTH WEIGHT (KG)	Lighter	0	<div></div>	2.70	Heavier
BLUE ROAN (%)	0%	50%	<div></div>	87	100%

SUITABLE FOR USE IN EARLY LACTATION ONLY

Springhill **IMPROVEMENT**

Sire: Springhill Fabulous Dam: Springhill Elsie Ear Tag: UK933262903824 AI Code: BB1381



CBI
£83.50

EMI
£58.80

MVI
£24.70

LATEST PROGENY PICTURES



R



GESTATION LENGTH (D)	Longer	285	<div></div>	280	Shorter
CALVING DIFFICULTY (%)	Harder	5	<div></div>	3.2	Easier
CALF VIGOUR (UNITS)	- Vigorous	1	<div></div>	1.50	+ Vigorous
CALF QUALITY (%)	Poorer	80	<div></div>	90.7	Excellent
BIRTH WEIGHT (KG)	Lighter	0	<div></div>	4.90	Heavier
BLUE ROAN (%)	0%	50%	<div></div>	73	100%

SUITABLE FOR USE IN EARLY LACTATION ONLY

Kersey **KARATE**

Sire: Bringlee Ecstasy Dam: Kersey Frost Ear Tag: UK222596200980 AI Code: BB1440



CBI
£80.90

EMI
£67.10

MVI
£13.80

LATEST PROGENY PICTURES



GESTATION LENGTH (D)	Longer	285		279	Shorter
CALVING DIFFICULTY (%)	Harder	5		2.5	Easier
CALF VIGOUR (UNITS)	- Vigorous	1		1.60	+ Vigorous
CALF QUALITY (%)	Poorer	80		80.8	Excellent
BIRTH WEIGHT (KG)	Lighter	0		2.00	Heavier
BLUE ROAN (%)	0%	50%		67	100%

NOT FOR PEDIGREE USE

Kersey **KINGPIN**

Sire: Auchenlay Echo Dam: Blue Mist Blossom Ear Tag: UK222596701013 AI Code: BB1489



CBI
£72.60

EMI
£61.50

MVI
£11.10

LATEST PROGENY PICTURES



GESTATION LENGTH (D)	Longer	285		280	Shorter
CALVING DIFFICULTY (%)	Harder	5		2.3	Easier
CALF VIGOUR (UNITS)	- Vigorous	1		1.60	+ Vigorous
CALF QUALITY (%)	Poorer	80		87.8	Excellent
BIRTH WEIGHT (KG)	Lighter	0		-1.30	Heavier
BLUE ROAN (%)	0%	50%		88	100%

NOT FOR PEDIGREE USE

Springhill **LALA**

Sire: Winston Van Perenof Dam: Springhill Cathy Ear Tag: UK933293500157 AI Code: BB1558



CBI
£85.00

EMI
£62.30

MVI
£22.80

LATEST PROGENY PICTURES



Kelowna **MOJO**

Sire: Kersey Geronimo Dam: Kelowna Brandy Ear Tag: UK102530701212 AI Code: BB1588



CBI
£57.70

EMI
£31.50

MVI
£26.20

LATEST PROGENY PICTURES



GESTATION LENGTH (D)	Longer	285		279	Shorter
CALVING DIFFICULTY (%)	Harder	5		3.8	Easier
CALF VIGOUR (UNITS)	- Vigorous	1		1.20	+ Vigorous
CALF QUALITY (%)	Poorer	80		97.5	Excellent
BIRTH WEIGHT (KG)	Lighter	0		-0.60	Heavier
BLUE ROAN (%)	0%	50%		82	100%

NOT FOR PEDIGREE USE



GESTATION LENGTH (D)	Longer	285		284	Shorter
CALVING DIFFICULTY (%)	Harder	5		1.9	Easier
CALF VIGOUR (UNITS)	- Vigorous	1		1.29	+ Vigorous
CALF QUALITY (%)	Poorer	80		91.5	Excellent
BIRTH WEIGHT (KG)	Lighter	0		-1.10	Heavier
BLUE ROAN (%)	0%	50%		94	100%

NOT FOR PEDIGREE USE

Kersey **NIMROD**

Sire: Maidenlands Force Dam: Kersey Flash Ear Tag: UK222596701160 AI Code: BB1674



CBI
£65.70

EMI
£49.70

MVI
£16.00

LATEST PROGENY PICTURES



Kersey **NEWTON**

Sire: Bringlee Ecstasy Dam: Kersey Flash Ear Tag: UK222596301142 AI Code: BB1672



CBI
£93.10

EMI
£73.90

MVI
£19.20

LATEST PROGENY PICTURES



GESTATION LENGTH (D)	Longer	285		281	Shorter
CALVING DIFFICULTY (%)	Harder	5		2.2	Easier
CALF VIGOUR (UNITS)	- Vigorous	1		1.60	+ Vigorous
CALF QUALITY (%)	Poorer	80		89.9	Excellent
BIRTH WEIGHT (KG)	Lighter	0		0.80	Heavier
BLUE ROAN (%)	0%	50%		86	100%

NOT FOR PEDIGREE USE



GESTATION LENGTH (D)	Longer	285		278	Shorter
CALVING DIFFICULTY (%)	Harder	5		2.4	Easier
CALF VIGOUR (UNITS)	- Vigorous	1		1.20	+ Vigorous
CALF QUALITY (%)	Poorer	80		94.6	Excellent
BIRTH WEIGHT (KG)	Lighter	0		0.30	Heavier
BLUE ROAN (%)	0%	50%		75	100%

NOT FOR PEDIGREE USE



Kersey **NICKEL**

Sire: Bringlee Ecstasy Dam: Kersey Flash Ear Tag: UK222596201141 AI Code: BB1673

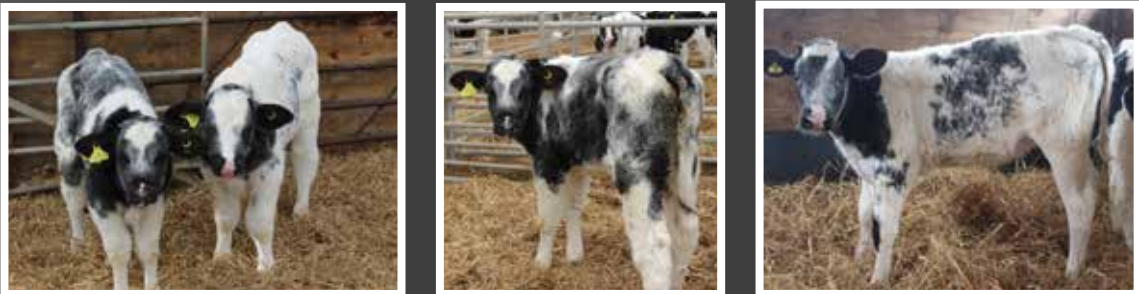


CBI
£77.00

EMI
£57.90

MVI
£19.10

LATEST PROGENY PICTURES



GESTATION LENGTH (D)	Longer	285		281	Shorter
CALVING DIFFICULTY (%)	Harder	5		1.8	Easier
CALF VIGOUR (UNITS)	- Vigorous	1		1.40	+ Vigorous
CALF QUALITY (%)	Poorer	80		92.3	Excellent
BIRTH WEIGHT (KG)	Lighter	0		0.80	Heavier
BLUE ROAN (%)	0%	50%		76	100%

NOT FOR PEDIGREE USE

Kersey **NIMBUS**

Sire: Springhill Improvement Dam: Kersey Kitkat Ear Tag: UK222596201204 AI Code: BB1716



CBI
£89.40

EMI
£57.60

MVI
£31.80

LATEST PROGENY PICTURES



GESTATION LENGTH (D)	Longer	285		281	Shorter
CALVING DIFFICULTY (%)	Harder	5		1.5	Easier
CALF VIGOUR (UNITS)	- Vigorous	1		1.50	+ Vigorous
CALF QUALITY (%)	Poorer	80		90.6	Excellent
BIRTH WEIGHT (KG)	Lighter	0		-0.60	Heavier
BLUE ROAN (%)	0%	50%		92	100%

NOT FOR PEDIGREE USE



Topside **NO HORNS** #1 (P)

Sire: Kubitus De Bray Dam: Top Side Lass Ear Tag: UK115268400134 AI Code: BB1733



CBI
£58.90

EMI
£32.20

MVI
£26.70

LATEST PROGENY PICTURES



FIRST PROGENY TESTED BRITISH BLUE POLLED SIRE AVAILABLE

GESTATION LENGTH (D)	Longer	285	<div></div>	284	Shorter
CALVING DIFFICULTY (%)	Harder	5	<div></div>	2.3	Easier
CALF VIGOUR (UNITS)	- Vigorous	1	<div></div>	1.60	+ Vigorous
CALF QUALITY (%)	Poorer	80	<div></div>	90.8	Excellent
BIRTH WEIGHT (KG)	Lighter	0	<div></div>	1.90	Heavier
BLUE ROAN (%)	0%	50%	<div></div>	48	100%

NOT FOR PEDIGREE USE

Kersey **ORION**

Sire: Kersey Kaleidoscope Dam: Kersey Dancer Ear Tag: UK222596 601208 AI Code: BB1715



CBI
£95.00

EMI
£72.80

MVI
£22.20

LATEST PROGENY PICTURES



GESTATION LENGTH (D)	Longer	285	<div></div>	279	Shorter
CALVING DIFFICULTY (%)	Harder	5	<div></div>	1.5	Easier
CALF VIGOUR (UNITS)	- Vigorous	1	<div></div>	1.40	+ Vigorous
CALF QUALITY (%)	Poorer	80	<div></div>	81.2	Excellent
BIRTH WEIGHT (KG)	Lighter	0	<div></div>	-2.60	Heavier
BLUE ROAN (%)	0%	50%	<div></div>	88	100%

NOT FOR PEDIGREE USE

Kelowna OPIUM

Sire: Newpole Icon Dam: Kelowna Indigo Ear Tag: UK102530 301341 AI Code: BB1782



CBI
£40.60

EMI
£27.50

MVI
£13.00

LATEST PROGENY PICTURES



GESTATION LENGTH (D)	Longer	285		281	Shorter
CALVING DIFFICULTY (%)	Harder	5		5.7	Easier
CALF VIGOUR (UNITS)	- Vigorous	1		1.40	+ Vigorous
CALF QUALITY (%)	Poorer	80		86.5	Excellent
BIRTH WEIGHT (KG)	Lighter	0		2.80	Heavier
BLUE ROAN (%)	0%	50%		81	100%

NOT FOR PEDIGREE USE

SUITABLE FOR USE IN EARLY LACTATION ONLY

NIAGARA

Sire: Destin Dam: Indra SC Ear Tag: CHAFRAM004242601434 AI Code: CH3931



Niagara is one of our two new proven Cullard Charolais. This sire carries all the performance that Golf had but with increased calving ease. Expect calves to be full of vitality and grow quickly.

LUTIN Pp

Sire: Fantasio Dam: G57 Gemini Ear Tag: CHFRAM007122266776 AI Code: CH3932



Lutin Pp is one of our new heavily-proven Cullard Charolais added to our line up. This heterozygous polled sire is a fantastic replacement for Golf. Lutin provides outstanding calf quality with moderate birth weights. The perfect bull for producing those market-topping calves.



- ✓ HIGHER FERTILITY
- ✓ HIGHEST PURITY
- ✓ 100% UK PROVEN

UPTO
97%
GENDER
ACCURACY**

SexedUltra
4M™
WHICH COULD LEAD
TO AN EXTRA
£1029.40 * per year
OVER A LOWER
PURITY PRODUCT

4M High Purity™
YOU COULD GAIN A MASSIVE
£1941.55 * per year
IN ADDITIONAL RETURNS
OVER A LOWER PURITY
PRODUCT AT THE SAME
PRICE POINT.

THE VALUE OF PURITY

Did you know that the purity of your straw alone could lead to additional gains on farm, purely by breeding more heifer calves? Cogent continue to be at the forefront of research and innovation of sexed semen technology and strive to gain farmer **profitability through each % of improvement.**

FREEPHONE: 0800 783 7258

*Based on a 200 cow herd with a 40% conception rate. Using 91% purity (SexedUltra 4M) and 97% purity (4M High Purity) **Based on 4M High Purity maximum gender accuracy

Netherhall 1 **OZ DAFFY** M024 (P)

4M
MALE

Sire: Wirruna Daffy D1 Dam: Wirruna Last Day E163 Ear Tag: UK103719202024 AI Code: H9375



CBI
£56.60

EMI
£35.40

MVI
£21.20

LATEST PROGENY PICTURES



R



GESTATION LENGTH (D)	Longer	285	285	Shorter
CALVING DIFFICULTY (%)	Harder	5	1.0	Easier
CALF VIGOUR (UNITS)	- Vigorous	1	1.20	+ Vigorous
CALF QUALITY (%)	Poorer	80	86.7	Excellent
BIRTH WEIGHT (KG)	Lighter	0	-4.40	Heavier

Netherhall 1 **JACK** P602 (P)

Sire: Wirruna Jack J12 Dam: Netherhall 1 Oz Tigress M018 Ear Tag: UK103719602602 AI Code: H9322



CBI
£72.80

EMI
£49.20

MVI
£23.60

LATEST PROGENY PICTURES



R

GESTATION LENGTH (D)	Longer	285		283	Shorter
CALVING DIFFICULTY (%)	Harder	5		1.0	Easier
CALF VIGOUR (UNITS)	- Vigorous	1		1.20	+ Vigorous
CALF QUALITY (%)	Poorer	80		81.0	Excellent
BIRTH WEIGHT (KG)	Lighter	0		-6.80	Heavier

Netherhall 1 **MATTY** S098 (P)

Sire: Wirruna Matty M288 Dam: Wirruna Victoria G7 Ear Tag: UK103719 503098 AI Code: H9277



CBI
£91.10

EMI
£70.10

MVI
£21.00

LATEST PROGENY PICTURES



R



GESTATION LENGTH (D)	Longer	285		278	Shorter
CALVING DIFFICULTY (%)	Harder	5		2.8	Easier
CALF VIGOUR (UNITS)	- Vigorous	1		1.30	+ Vigorous
CALF QUALITY (%)	Poorer	80		85.1	Excellent
BIRTH WEIGHT (KG)	Lighter	0		0.70	Heavier

Elite LACETTE

Sire: Ampertaine Foreman Dam: Ardlea Gig Ear Tag: IE221062721390 AI Code: LN2755



CBI
£42.50

EMI
£10.30

MVI
£32.30

LATEST PROGENY PICTURES



R

GESTATION LENGTH (D)	Longer		285		287	Shorter
CALVING DIFFICULTY (%)	Harder		5		2.8	Easier
CALF VIGOUR (UNITS)	- Vigorous		1		1.40	+ Vigorous
CALF QUALITY (%)	Poorer		80		93.9	Excellent
BIRTH WEIGHT (KG)	Lighter		0		3.30	Heavier

SUITABLE FOR USE IN EARLY LACTATION ONLY

Twemlows OFFICER

Sire: Ampertaine Commander Dam: Twemlows Hum Ear Tag: UK 305928/401634 AI Code: LN2844



CBI
£88.08

EMI
£38.01

MVI
£50.07

LATEST PROGENY PICTURES



R



GESTATION LENGTH (D)	Longer		285		284	Shorter
CALVING DIFFICULTY (%)	Harder		5		1.0	Easier
CALF VIGOUR (UNITS)	- Vigorous		1		1.40	+ Vigorous
CALF QUALITY (%)	Poorer		80		99.0	Excellent
BIRTH WEIGHT (KG)	Lighter		0		-0.20	Heavier

Blackbrook **BAKEWELL**

Sire: Blackbrook Richester Dam: Blackbrook Zoella VG85 Ear Tag: UK200538101026 AI Code: LH0914



We are excited to be able to offer semen from this exceptional bull. The Blackbrook herd has been selected and developed for natural fleshing cattle that grow quickly and suit every system. Bakewell, is an exceptional bull that displays outstanding length over his loin and muscle development throughout. Bakewell is full brother to the renowned Blackbrook Philosopher. This bull will provide excellent calf quality with easy calving credentials as you would expect from this breed.

SINCE **B** 1922
BUITELAAR
GROUP

**FIXED, FORWARD PRICED
CONTRACTS AVAILABLE.**

Tel: +44 (0) 1244579400

www.buitelaargroup.com

COMMERCIAL USE ONLY

SINCE **B** 1922
BUITELAAR
GROUP

**THE
LONGHORN
SCHEME**

12 month fixed, forward priced contracts

Why Longhorn?

Unlike most breeds, the Longhorn has seen little genetic interference and with a long and fascinating history, it has maintained the highly desirable attributes we require in a dairy-beef sire.

Benefits

- Naturally easy calving
- Short gestation
- Spritely, vibrant calves
- TB calf collection assurance
- Premium prices
- Commercial security
- Peace of mind

Collection or Drop Off



Out of herds averaging >600kgs

Get in touch: 01244 293130

@buitelaargroup

A NEW STAR OF THE WAGYU BREED



MR NANASHI 204790

MR NANASHI is a new Wagyu to the Cogent portfolio, coming from an elite breeding operation in Germany. Mr Nanashi has a unique parentage, with bloodlines which are extremely rare in Europe. His sire is the bull Sanjiro 3 FB2900, the No. 1 bull for marbling on EBVs in the US. Nanashi has very good breeding values for eye muscle area (+6.6cm²) and for

marbling (+1.5) and scores (+0.31) for marbling fineness, on the Australian evaluation system.

Mr Nanashi's dam is Nanashi FB10054, a legend that many breeders around the world call the best Wagyu cow outside of Japan. For those who have seen her, they say she is a big powerhouse of a cow with extreme power and length.

- ELITE EYE MUSCLE BULL
- SIRED BY SANJIRO 3
- NEGATIVE FOR IARS/F11/F13/CHS/CL16 AND BAND 3
- OUTCROSS GENETICS TO MANY EUROPEAN BLOODLINES
- AVAILABLE IN MALE AND FEMALE SEXEDULTRA 4M



AHDB NATIONAL BEEF EVALUATIONS

THE AHDB NATIONAL BEEF EVALUATIONS PROVIDE A SET OF FIVE ESTIMATED BREEDING VALUES (EBVS) THAT ALLOW BREEDERS TO DIRECTLY SELECT BULLS BASED ON THEIR GENETIC POTENTIAL FOR CARCASE PERFORMANCE. THESE FIVE NEW EBVS ARE :

- CARCASE WEIGHT (KG)
- CARCASE CONFORMATION (EUROP CLASSIFICATION)
- CARCASE FAT CLASS (EUROP CLASSIFICATION)
- SLAUGHTER AGE (DAYS)
- AVERAGE DAILY CARCASE GAIN (KG)

THESE EBVS ARE GENERATED BY COMBINING LARGE VOLUMES OF NATIONAL DATA FROM BCMS, PROCESSORS AND BREED SOCIETIES, GIVING HIGH ACCURACY FIGURES FOR BULLS THAT HAVE HAD PROGENY SLAUGHTERED.

BULL NAME	AHDB Evaluations	28/10/2022			
	Days to slaughter	Carcase weight	Carcase conformation	Carcase fat class	ADCG
Rawburn Blackbush S420	-11.89	7.63	-0.11	1.72	0.02
Quaker Hill Dead Center	-49.42	-14.93	-2.33	0.48	0.01
Morven Mr Albert S792	2.49	1.82	0.84	-0.75	0.00
Cape Wrath Eldaman U793	-3.13	1.97	0.30	0.73	0.01
Blackhaugh Inger	-12.30	3.67	0.20	1.07	0.02
Auchenlay Hitman	-13.20	3.99	1.67	-3.14	0.01
Springhill Improvement	-15.87	11.52	2.71	-3.78	0.02
Kersey Karate	-21.40	6.50	2.70	-0.92	0.02
Kersey Kingpin	32.13	12.53	1.83	-4.07	-0.01
Springhill Lala	11.26	13.30	3.81	-2.43	0.01
Kelowna Mojo	10.64	10.88	3.46	-4.68	0.00
Kersey Nimrod	6.63	4.31	1.71	-3.19	0.00
Kersey Newton	11.51	13.80	3.42	-3.32	0.01
Kersey Nickel	11.51	13.80	3.42	-3.32	0.01
Kersey Nimbus	1.61	10.12	2.56	-3.69	0.01
Topside No Horns	4.95	10.38	3.29	-4.00	0.01
Kersey Orian	6.29	17.97	3.44	-4.41	0.02
Kelowna Opium	-10.49	7.66	2.49	-4.39	0.02
Netherhall 1 Oz Daffy	-30.63	-22.94	-2.07	2.97	-0.02
Netherhall 1 Jack	-39.70	-10.40	-0.78	3.80	0.01
Elite Lacette	-15.09	5.22	0.53	0.68	0.03

FOR FURTHER DETAILS, PLEASE SEE [HTTPS://AHDB.ORG.UK/KNOWLEDGE-LIBRARY/NATIONAL-BEEF-EVALUATIONS](https://ahdb.org.uk/knowledge-library/national-beef-evaluations)



PATHWAY



What are the advantages for the dairy farmer?

Pathway Farming is an integrated beef company, specialising in the production of high quality Angus beef for premium retailers. Cogent and Pathway partnered in 2019 to develop a programme which will accelerate genetic improvements within the breed.

Gain access to competitively priced exclusive Aberdeen Angus bulls from Cogent, proven to have short gestation length and low birth

weights, we collect direct from farms in TB-free, TB4 and TB1 areas (Male HF bull calves also purchased in TB1 areas) with payment via BACS and no commission. Male SexedULTRA 4M is available on selected bulls. A major benefit of working with us is our long term, very competitive, fixed price contracts, available for up to 24 months and we also offer quality benchmarked feedback on calf performance through to finishing.

What are we looking for?

- **Fit, healthy calves, minimum 45kg weight** (12-40 days of age)
- **HF type cows, minimum bodyweight 550kg**
- **Good colostrum management**
- **Known health status of herd**
- **Sire Ear Tag typed onto passports**
- **AYR or block calving herds**

**COGENT ANGUS X CALVES ARE THE PERFECT FIT
FOR PATHWAY FARMING SUPPLY CHAIN.**

Whether you have Aberdeen Angus calves available now or are interested in switching over in the future, get in touch.

Email: info@pathwayfarming.co.uk **Tel:** 01989 495101

 @pathwayfarming

 @Pathway_Farming

THE TRAIT LEADERS

The Cogent Beef sires that feature in these trait leader tables are Proven bulls that have been ranked according to their EMI, MVI, calving ease and gestation length scoring. These rankings are highlighted to enable you to make comparisons between bulls and to allow you to select the most suitable beef genetics for your herd.

NATIVE EASE OF MANAGEMENT IMPACT (£EMI)



1	Blackhaugh Lucas	86.4
2	Quaker Hill Dead Center	85.8
3	Cape Wrath Eldaman	79.8
4	Netherhall 1 Matty	70.1

NATIVE GESTATION LENGTH



1	Blackhaugh Lucas	277
2	Cape Wrath Eldaman	277
3	Quaker Hill Dead Center	278
4	Netherhall 1 Matty	278

CONTINENTAL EASE OF MANAGEMENT IMPACT (£EMI)



1	Kersey Newton	73.9
2	Kersey Orion	72.8
3	Kersey Karate	67.1
4	Springhill Lala	62.3

CONTINENTAL GESTATION LENGTH



1	Kersey Newton	278
2	Kersey Orion	279
3	Kersey Karate	279
4	Springhill Lala	279

NATIVE MARKET VALUE IMPACT (£MVI)



1	Rawburn Blackbush	27.9
2	Quaker Hill Dead Center	26.5
3	Netherhall Jack	23.6
4	Netherhall 1 Oz Daffy	21.2

NATIVE CALVING EASE



1	Quaker Hill Dead Center	1
2	Netherhall Jack	1
3	Netherhall 1 Oz Daffy	1
4	Blackhaugh Lucas	1.8

CONTINENTAL MARKET VALUE IMPACT (£MVI)



1	Twemlows Officer	50.07
2	Elite Lacette	32.3
3	Kersey Nimbus	31.8
4	Auchenlay Hitman	31

CONTINENTAL CALVING EASE



1	Twemlows Officer	1
2	Kersey Nimbus	1.5
3	Kersey Orion	1.5
4	Kersey Nickel ET	1.8

#SHOUTABOUTTHESIRE

TAKING OUR INDUSTRY HIGHER WITH **AHDB**
 REGISTERING ALL SIRES ON BCMS HELPS US TO
 PROVIDE MORE DATA ON THE SIRES YOU CHOOSE.

PRIMESTART COLOSTRUM

A complete replacer for the newborn calf



European Derived, High Health
Status Colostrum Ingredient:

**FREE
FROM**



TB



EBL



IBR



JOHNES

Give Your Calves The Best Start To Life

FREEPHONE: 0800 783 7258

www.cogentuk.com

