

BEEFIMPACT

Data Driven Genetics



Ecofeed

Legend

Ultraplus

PRECISION
DNA

Chromosomal
Mating

BEEF
IMPACT

WHATEVER THE CHALLENGE

Improving herd performance and fertility can often feel like an uphill battle - **BUT YOU DON'T HAVE TO TACKLE IT ALONE.**

Our industry-leading sexed semen, extensive range of trait-topping genetics, innovative herd management solutions, and the unparalleled knowledge of our Genetic Consultants are your perfect partners to accomplishing the peaks you never thought you would reach.

**WE HAVE THE MEANS,
WHATEVER THE CHALLENGE..!**



WWW.COAGENTUK.COM

INDEX	
5	COGENT BEEF INDEX
8	ABERDEEN-ANGUS: EMI TRAIT LEADERS
9	COGENT GROWTH INDEX
10	ABERDEEN-ANGUS
22	ABERDEEN-ANGUS: MVI TRAIT LEADERS
26	BRITISH BLUE: EMI TRAIT LEADERS
27	BRITISH BLUE
40	BRITISH BLUE: MVI TRAIT LEADERS
42	CHAROLAIS
43	HEREFORD
46	LIMOUSIN
48	CULLARD CHAROLAIS
51	LONGHORN
53	WAGYU
54	WELSH BLACK
54	BRITISH BLONDE
54	SIMMENTAL

“
More **DATA**
More **RELIABLE**
More **PROFITABLE**”



Ecofeed



ABERDEEN-ANGUS
BULLS WITH AND
ECOFEED SYMBOL HAVE
UNDERGONE A PROGENY
FEED EFFICIENCY TRIAL

PROGENY ACHIEVE
ABOVE AVERAGE
GROWTH ON THE
COGENT GROWTH INDEX

Ultraplus Male

SIRE IS AVAILABLE
IN ULTRAPLUS SEXED
MALE

SINCE 1922
B
BUITELAAR
GROUP

SIRE QUALIFIES FOR
THE BUITELAAR
CALF SCHEME



SIRE HAS BEEN
SELECTED AS ONE OF
MEADOW QUALITY'S
SUPERIOR SIRE

DATA PROVEN

PROVEN SIRE WITH
OVER 100 CALVING
SURVEYS

FREEPHONE: 0800 783 7258

E: INFO@COAGENTUK.COM

WWW.COAGENTUK.COM

Beef semen accounts for over **48%** of semen sales into UK dairy farms

COGENT BEEF IMPACT OUR DATA ADVANTAGE

At Cogent we have always aimed to provide the highest value product possible.

With the unprecedented level of data we are now collecting on a daily basis, we are able to provide more information on our Beef Impact sires than ever before, capturing full lifetime data on our beef on dairy progeny.

By combining our superior beef-on-dairy sires, with genomic selection, Ultraplus sexed semen and Ultraplus sexed male beef semen, you can maximise the value of every calf born on the farm.



PRECISION DNA GENOMIC TESTING

Create a breeding strategy based on reliable data

ULTIMATE BREEDING STRATEGY

Ultraplus™

Maximise genetic gain by using the most elite dairy sires on your genetically elite females

Ultraplus™ Male

Take advantage of the increased value of more beef calves to sell.

BEEF IMPACT

Data driven genetics, designed to produce the calf you want, time and time again.



COGENT BEEF IMPACT INDEX EXPLAINED

Expressed as a monetary value, Cogent Beef Impact index (£CBI) combines a range of favourable traits associated with producing excellent dairy-cross-beef calves to indicate the profitable advantage of using one beef sire over another.

A high £CBI sire incorporates health, management, quality and performance benefits for the ultimate in dairy beef progeny.

£CBI has been further split down into Ease of Management Index (£EMI) and Market Value Index (£MVI) which highlight bulls whose progeny excel in certain traits – together they give calves the best start in life to maximise future performance.

£EMI
GESTATION LENGTH
CALF VIGOUR
CALVING EASE

£MVI
CALF QUALITY
BIRTH WEIGHT

Rigorously tested on UK Dairy farms, Cogent Beef Impact data is highly reliable.

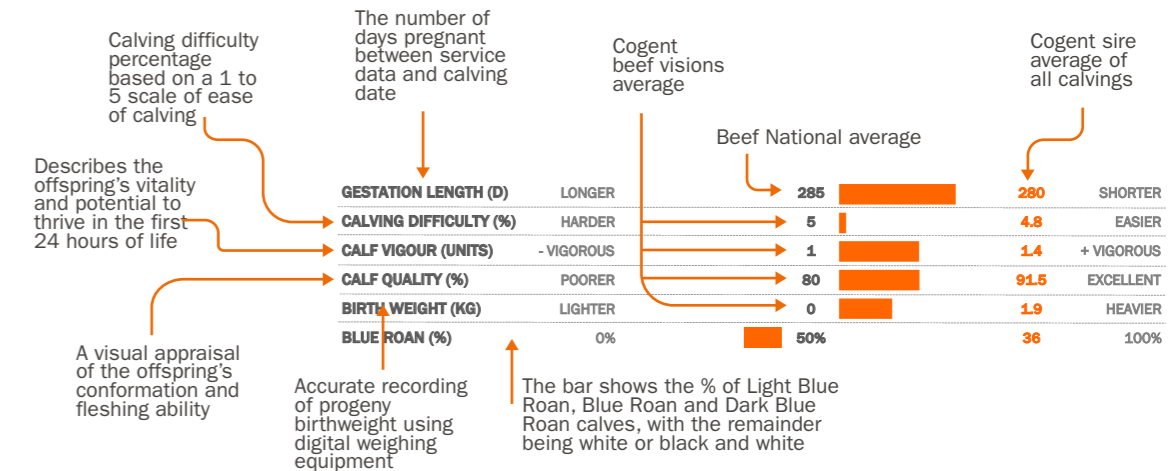
**MORE DATA
MORE RELIABLE
MORE PROFITABLE**

UNLOCKING THE POTENTIAL

Data collection begins at semen collection, before early life data is collected on our Visions test farms, this is followed by growth and performance monitoring across the animals' entire life.



UNDERSTANDING OUR DATA



Ecofeed®



THE GREATEST POTENTIAL FOR IMPROVING PROFITABILITY AND ENVIRONMENTAL SUSTAINABILITY IS TO SELECT ANIMALS THAT PRODUCE THE SAME AMOUNT OF MILK OR MEAT ON LESS FEED.

THE LARGEST EVIDENCE-BASED FEED CONVERSION EFFICIENCY INDEX IN THE WORLD NOW PRESENTS ECOFEED BEEF, WHICH HAS BEEN DEVELOPED FOR UK BULLS, IN UK CONDITIONS.

THE HIGHER
THE SCORE, THE MORE
EFFICIENT
THE ANIMAL

...80 90 100 110 120 130...

High Ecofeed Beef on Dairy Calves consume

19% less feed per day whilst maintaining performance

High Heritability

24%


SCAN THE CODE TO FIND OUT MORE ABOUT ECOFEED





EMI ABERDEEN-ANGUS

Aberdeen-Angus sires, specifically selected for their Ease of Management traits - Calving Ease, short Gestation Length and low Birth Weights. Giving calves the best start in life to maximise their future performance.

NAME	EMI (£)	CALVING DIFFICULTY (%)	GESTATION LENGTH (DAYS)	CALF VIGOUR (UNITS)	BIRTH WEIGHT (KG)	
BLACKHAUGH LUCAS	87.40	1.5	277	1.4	-2.5	
BLACKHAUGH HIGHDEAL	71.70	1.5	279	1.3	-1.3	✓
RAWBURN EVANDER	65.40	2.9	279	1.2	0.3	
MORVEN MR ALBERT	64.50	2.9	279	1.2	-1.1	
BLACKHAUGH REGINALD	61.00	2.6	280	1.1	-2.7	✓
CBL NON STOP	56.20	1.8	281	1.2	-1.7	
QUAKER HILL CHIEFTAIN	55.70	0.8	282	1.4	1.5	
CBL BLACK PRECISION	55.00	1.9	281	1.2	-0.8	
BLACKHAUGH BARNABY	54.90	2.4	281	1.1	-2.8	✓
RAWBURN BLACKBUSH	45.00	2.3	282	1.3	4.5	
BLACKHAUGH PLATO	44.10	1.3	283	1.3	-2.0	✓
LUNEVALLEY MAJESTIC	27.50	3.8	284	1.5	0.4	

THE AVERAGE GESTATION LENGTH OF OUR ABERDEEN-ANGUS BULLS IS **280 DAYS**

SCAN THE CODE TO FIND MORE ABOUT EMI & MVI



Is predictable **GROWTH** possible?

COGENT GROWTH INDEX (CGI)

Cogent's latest proprietary index highlights progeny if high CGI sires that will achieve significantly higher early growth rates.

MEANING YOU WILL INCREASE THE VALUE OF YOUR CALVES FOR SALE.

Calves will repeatedly deliver desired sales specifications, giving you peace of mind of the genetics you choose.



Identify the bulls whose progeny hit early growth targets

LOOK OUT FOR THIS SYMBOL TO IDENTIFY HIGH CGI Sires



ELITE CGI SIRE

SCAN THE CODE TO FIND OUT MORE ABOUT CGI



DATA PROVEN



Ear Tag: UK562106102420 AI Code: AA1562

RAWBURN BLACKBUSH S420
BLACKBUSH

CBI £75.50 EMI £45.00 MVI £30.40

Ultraplus[™] Male
Ecofeed[®] BEEF 102

SCAN THE CODE TO
TO SEE PROGENY VIDEOS



MEADOW QUALITY BUITELAAR GROUP

SEMEN ROYALTY SIRE



GESTATION LENGTH (D)	LONGER	285	282	SHORTER
CALVING DIFFICULTY (%)	HARDER	5	2.3	EASIER
CALF VIGOUR (UNITS)	- VIGOROUS	1	1.3	+ VIGOROUS
CALF QUALITY (%)	POORER	80	96.0	EXCELLENT
BIRTH WEIGHT (KG)	LIGHTER	0	4.5	HEAVIER

**THE ELITE CALF
QUALITY SIRE**

DATA PROVEN



Ear Tag: UK521115603792 AI Code: AA1608

MORVEN MR ALBERT S792
MR ALBERT

CBI £72.70 EMI £64.50 MVI £8.20

SCAN THE CODE TO
TO SEE PROGENY VIDEOS



MEADOW QUALITY



GESTATION LENGTH (D)	LONGER	285	279	SHORTER
CALVING DIFFICULTY (%)	HARDER	5	2.9	EASIER
CALF VIGOUR (UNITS)	- VIGOROUS	1	1.2	+ VIGOROUS
CALF QUALITY (%)	POORER	80	83.1	EXCELLENT
BIRTH WEIGHT (KG)	LIGHTER	0	-1.1	HEAVIER

**THE RELIABLE CALVING
EASE SIRE**

DATA PROVEN



Ear Tag: UK562121101848 AI Code: AA1705

BLACKHAUGH LUCAS U848

LUCAS



Ultraplus[™] Male

Ecofeed[®] BEEF 96



SCAN THE CODE TO
TO SEE PROGENY VIDEOS



GESTATION LENGTH (D)	LONGER	285	277	SHORTER
CALVING DIFFICULTY (%)	HARDER	5	1.5	EASIER
CALF VIGOUR (UNITS)	- VIGOROUS	1	1.4	+ VIGOROUS
CALF QUALITY (%)	POORER	80	80.3	EXCELLENT
BIRTH WEIGHT (KG)	LIGHTER	0	-2.5	HEAVIER

THE TRAIT LEADER FOR
GESTATION LENGTH

DATA PROVEN



Ear Tag: UK103719502916 AI Code: AA1651

LUNEVALLEY MAJESTIC U916

MAJESTIC



Ecofeed[®] BEEF 95



SCAN THE CODE TO
TO SEE PROGENY VIDEOS



GESTATION LENGTH (D)	LONGER	285	284	SHORTER
CALVING DIFFICULTY (%)	HARDER	5	3.8	EASIER
CALF VIGOUR (UNITS)	- VIGOROUS	1	1.5	+ VIGOROUS
CALF QUALITY (%)	POORER	80	83.3	EXCELLENT
BIRTH WEIGHT (KG)	LIGHTER	0	0.4	HEAVIER

MARKET-TOPPING CALVES
WITH EXCEPTIONAL
QUALITY

DATA PROVEN



Ear Tag: UK562121 602175 AI Code: AA1845

BLACKHAUGH BARNABY W175

BARNABY



NEW SIRE



SCAN THE CODE TO
TO SEE PROGENY VIDEOS



ONE OF THE BREED'S
LEADING MARBLING
SIREs

GESTATION LENGTH (D)	LONGER	285	281	SHORTER
CALVING DIFFICULTY (%)	HARDER	5	2.4	EASIER
CALF VIGOUR (UNITS)	- VIGOROUS	1	1.1	+ VIGOROUS
CALF QUALITY (%)	POORER	80	99.0	EXCELLENT
BIRTH WEIGHT (KG)	LIGHTER	0	-2.8	HEAVIER

DATA PROVEN



Ear Tag: UK562106302870 AI Code: AA1748

RAWBURN EVANDER V870

EVANDER



Ultraplus[™] Male



SCAN THE CODE TO
TO SEE PROGENY VIDEOS



CALVING EASE COUPLED
WITH CALF QUALITY

GESTATION LENGTH (D)	LONGER	285	279	SHORTER
CALVING DIFFICULTY (%)	HARDER	5	2.9	EASIER
CALF VIGOUR (UNITS)	- VIGOROUS	1	1.2	+ VIGOROUS
CALF QUALITY (%)	POORER	80	90.4	EXCELLENT
BIRTH WEIGHT (KG)	LIGHTER	0	0.3	HEAVIER

DATA PROVEN



Ear Tag: UK562121701917 AI Code: AA1770

BLACKHAUGH LORD HIGHDEAL U917

HIGHDEAL



Ultraplus[™] Male

Ecofeed[®] BEEF 99



GESTATION LENGTH (D)	LONGER	285	279	SHORTER
CALVING DIFFICULTY (%)	HARDER	5	1.5	EASIER
CALF VIGOUR (UNITS)	- VIGOROUS	1	1.3	+ VIGOROUS
CALF QUALITY (%)	POORER	80	85.2	EXCELLENT
BIRTH WEIGHT (KG)	LIGHTER	0	-1.3	HEAVIER

EXCEPTIONAL GROWTH WITH SHORT GESTATION LENGTH



SCAN THE CODE TO SEE PROGENY VIDEOS



DATA PROVEN



Ear Tag: UK562121502181 AI Code: AA1813

BLACKHAUGH PLATO W181

PLATO



Ultraplus[™] Male

NEW SIRE



GESTATION LENGTH (D)	LONGER	285	283	SHORTER
CALVING DIFFICULTY (%)	HARDER	5	1.3	EASIER
CALF VIGOUR (UNITS)	- VIGOROUS	1	1.3	+ VIGOROUS
CALF QUALITY (%)	POORER	80	87.9	EXCELLENT
BIRTH WEIGHT (KG)	LIGHTER	0	-2.0	HEAVIER

LEADING CALVING EASE WITH A LOW BIRTH WEIGHT



SCAN THE CODE TO SEE PROGENY VIDEOS



DATA PROVEN



NEW SIRE

Ear Tag: UK222596501326 AI Code: AA1815

CBL NON STOP W326

NON STOP

CBI £73.70 EMI £56.20 MVI £17.50

Ultraplus Male



SCAN THE CODE TO
TO SEE PROGENY VIDEOS



GESTATION LENGTH (D)	LONGER	285	281	SHORTER
CALVING DIFFICULTY (%)	HARDER	5	1.8	EASIER
CALF VIGOUR (UNITS)	- VIGOROUS	1	1.2	+ VIGOROUS
CALF QUALITY (%)	POORER	80	91.7	EXCELLENT
BIRTH WEIGHT (KG)	LIGHTER	0	-1.7	HEAVIER

CALVING EASE, LOW BIRTH WEIGHTS AND GREAT CALF QUALITY

DATA PROVEN



NEW SIRE

Ear Tag: UK222596301317 AI Code: AA1814

CBL BLACK PRECISION W317

PRECISION

CBI £67.30 EMI £55.00 MVI £12.30

Ultraplus Male



SCAN THE CODE TO
TO SEE PROGENY VIDEOS



GESTATION LENGTH (D)	LONGER	285	281	SHORTER
CALVING DIFFICULTY (%)	HARDER	5	1.9	EASIER
CALF VIGOUR (UNITS)	- VIGOROUS	1	1.2	+ VIGOROUS
CALF QUALITY (%)	POORER	80	94.8	EXCELLENT
BIRTH WEIGHT (KG)	LIGHTER	0	-0.8	HEAVIER

LEADING CALF QUALITY COUPLED WITH EXCEPTIONAL CALVING EASE

DATA PROVEN



NEW SIRE

Ear Tag: UK562121702176 AI Code: AA1830

BLACKHAUGH REGINALD W176

REGINALD

CBI £77.90 EMI £61.00 MVI £16.90

Ultraplus[™] Male



SCAN THE CODE TO
TO SEE PROGENY VIDEOS



GESTATION LENGTH (D)	LONGER	285	280	SHORTER
CALVING DIFFICULTY (%)	HARDER	5	2.6	EASIER
CALF VIGOUR (UNITS)	- VIGOROUS	1	1.1	+ VIGOROUS
CALF QUALITY (%)	POORER	80	94.9	EXCELLENT
BIRTH WEIGHT (KG)	LIGHTER	0	-2.7	HEAVIER

TRAIT-LEADING CALF
QUALITY WITH EXCEPTIONAL
CALF PERFORMANCE

DATA PROVEN



NEW SIRE

Ear Tag: US4318025238 AI Code: AA1828

QUAKER HILL CHIEFTAIN

CHIEFTAIN

CBI £69.30 EMI £55.70 MVI £13.60

Ultraplus[™] Male

Ecofeed[®] BEEF 103



SCAN THE CODE TO
TO SEE PROGENY VIDEOS





GESTATION LENGTH (D)	LONGER	285	282	SHORTER
CALVING DIFFICULTY (%)	HARDER	5	0.8	EASIER
CALF VIGOUR (UNITS)	- VIGOROUS	1	1.4	+ VIGOROUS
CALF QUALITY (%)	POORER	80	95.6	EXCELLENT
BIRTH WEIGHT (KG)	LIGHTER	0	1.5	HEAVIER

COMBINES CALVING EASE
WITH EXCEPTIONAL CALF
QUALITY



MVI ABERDEEN-ANGUS

Aberdeen-Angus sires which utilise high calf growth rates and excellent early life performance to maximise returns from the profitable Market Value traits.

NAME	MVI (£)	CALF QUALITY (%)	BIRTH WEIGHT (KG)	EPDS 			EBVS 		
				CARCASE WEIGHT (LBS)	MARBLING	BEEF VALUE (\$B)	CARCASE WEIGHT (KG)	IMF%	RANKING (%)
RAWBURN BLACKBUSH	30.40	96.0	4.5	53	0.16	131	78	-0.3	95
BLACKHAUGH BARNABY	17.80	99.0	-2.8	57	1.03	161	73	1.8	1
CBL NON STOP	17.50	91.7	-1.7	70	1.19	193	89	1.7	1
RAWBURN EVANDER	17.20	90.4	0.3	45	0.18	129	104	0.4	20
BLACKHAUGH REGINALD	16.90	94.9	-2.7	47	1.26	173	83	1.7	1
QUAKER HILL CHIEFTAIN	13.60	95.6	1.5	59	0.88	168	82	1.1	1
BLACKHAUGH LUCAS	13.00	80.3	-2.5	33	0.99	146	73	1.0	1
BLACKHAUGH PLATO	12.90	87.9	-2.0	63	0.92	171	85	1.5	1
CBL BLACK PRECISION	12.30	94.8	-0.8	72	1.05	196	86	1.4	1
BLACKHAUGH HIGHDEAL	12.10	85.2	-1.3	47	-0.18	109	79	0.4	20
MORVEN MR ALBERT	8.20	83.1	-1.1	43	0.61	145	63	0.9	5
LUNEVALLEY MAJESTIC	6.60	83.3	0.4	58	0.81	174	86	1.4	1

ABERDEEN-ANGUS

Beef Value Index \$B
Beef Value Index (\$B) known as dollar beef, genomically predicts the expected average profitability differences due to genetics in future progeny - providing a basis for some of the selection criteria in our breeding programme.

Expected Progeny Differences (EPD)
EPDs are predictions of the genetic transmitting ability of a parent to its offspring and are used in the USA in a similar way to EBVs in the UK.

SCAN THE CODE TO FIND
MORE ABOUT EMI & MVI



FROM BIRTH

EARLY LIFE
PERFORMANCE

REARING

FINISHING

TRACEABILITY FROM CONCEPTION TO CONSUMPTION

Pathway's integrated beef supply chain, supplying high-quality Angus beef to premium retailers provides the perfect partnership with Cogent's industry-leading genetics and pioneering feed efficiency studies.

From birthweight and calving ease to health and growth rates, Pathway monitor animal performance and wellbeing throughout each animals' life, to provide the ultimate in traceability and efficiency throughout the supply chain.

Whether you are interested in producing calves for the Pathway programme or have the capacity to accommodate grazing or finishing animals, get in touch.

EMAIL: INFO@PATHWAYFARMING.CO.UK

TEL: 01989 495101

 @pathwayfarming

 @Pathway_Farming

COGENT BEEF, A PROVEN BREEDING PROGRAMME FOR TOMORROW'S CONSUMER

Designed to address the ever-increasing demand for beef semen in the dairy herd, the Cogent Beef programme highlights the importance of providing consistent genetics that are repeatable.

The main goal of the Cogent beef breeding programme is to ensure selection of bulls that can perform in any system, which is why Cogent has partnered with some of the most forward-thinking and progressive beef herds in the UK.

Based on the commercial requirements of today's dairy farmer, we have successfully developed a breeding programme founded on production, type and reliability. With a special focus on calving ease, calf quality, gestation length, growth and carcass traits.

The Aberdeen-Angus breed has been celebrated as the world leader in the cattle breeding industry for producing top-quality beef and manageable cattle, with short gestation lengths and excellent calving ease.

While the British Blue is of great importance to the modern commercial beef market, being docile, fine boned and heavily muscled with tremendous growth potential leading to a very high yield of saleable meat.



FERTILITY, TEMPERAMENT AND CALVING EASE ARE NON-NEGOTIABLES, THE GOAL IS TO BREED ANIMALS WHICH CAN THRIVE IN A REAL-WORLD COMMERCIAL ENVIRONMENT.

Andrew Elliot, Blackhaugh
Aberdeen-Angus



SCAN THE CODE TO FIND OUT
MORE ABOUT OUR BREEDING PROGRAMME



OUR RELATIONSHIP WITH COGENT HAS GONE FROM STRENGTH TO STRENGTH, IT IS A REAL PLEASURE TO SEE CALVES BEING BORN FROM OUR BULLS ON FARMS ACROSS THE UK.

Steven Pattinson, Kelowna British Blues



THROUGH OUR PARTNERSHIP WITH COGENT, KERSEY BRITISH BLUE BULLS ARE HAVING A POSITIVE INFLUENCE ON THE BEEF AND DAIRY INDUSTRIES.

Chris Partridge, Kersey British Blues





EMI BRITISH BLUE

British Blue sires which capitalise on the crucial Ease of Management traits which include Calving Ease, short Gestation Length, and excellent Calf Vigour. Giving calves the best start in life to maximise their future performance.

NAME	EMI (£)	CALVING DIFFICULTY (%)	GESTATION LENGTH (DAYS)	CALF VIGOUR (UNITS)	BIRTH WEIGHT (KG)	ELITE CGI SIRE
CBL PATHFINDER	80.90	1.1	278	1.7	0.7	
CBL PLASMA	69.40	1.3	279	1.7	-2.6	
KERSEY ORION	68.60	1.9	279	1.2	-1.5	✓
KERSEY KINGPIN	61.90	2.1	280	1.6	-1.6	
KERSEY NIMBUS	58.40	1.2	281	1.5	-0.1	
CBL PYTHON	56.10	1.8	281	1.6	0.3	✓
OLD STACKYARD BLUES POLO	54.50	2.1	281	1.5	0.7	
KELOWNA OSIRIS	52.10	2.5	281	1.4	-1.0	
LUCE WATER PARTY BOY	52.10	3.5	280	1.7	2.1	
AUCHENLAY HITMAN	47.30	4.8	280	1.4	1.9	
MAIDENLANDS ODDS ON	47.00	2.2	282	1.5	-0.8	
OLD STACKYARD BLUES POWER	39.40	2.7	283	1.6	2.3	✓
KELOWNA MOJO	31.50	2.0	284	1.3	-1.6	

BRITISH BLUE

92%
OF OUR BULLS ARE BELOW NATIONAL AVERAGE FOR GESTATION LENGTH*

*NATIONAL AVERAGE GESTATION LENGTH 283 DAYS

SCAN THE CODE TO FIND MORE ABOUT EMI & MVI



DATA PROVEN



GESTATION LENGTH (D)	LONGER	285	280	SHORTER
CALVING DIFFICULTY (%)	HARDER	5	4.8	EASIER
CALF VIGOUR (UNITS)	- VIGOROUS	1	1.4	+ VIGOROUS
CALF QUALITY (%)	POORER	80	91.5	EXCELLENT
BIRTH WEIGHT (KG)	LIGHTER	0	1.9	HEAVIER
BLUE ROAN (%)	0%	50%	36	100%

Ear Tag: UK542740500435 AI Code: BB1316

AUCHENLAY HITMAN
HITMAN

CBI **£78.20** EMI **£47.30** MVI **£30.90**

SCAN THE CODE TO SEE PROGENY VIDEOS



THE CALF QUALITY PERFECTIONIST

DATA PROVEN



Ear Tag: UK222596701013 AI Code: BB1489

KERSEY KINGPIN

KINGPIN



SCAN THE CODE TO
TO SEE PROGENY VIDEOS



GESTATION LENGTH (D)	LONGER	285	280	SHORTER
CALVING DIFFICULTY (%)	HARDER	5	2.1	EASIER
CALF VIGOUR (UNITS)	- VIGOROUS	1	1.6	+ VIGOROUS
CALF QUALITY (%)	POORER	80	87.1	EXCELLENT
BIRTH WEIGHT (KG)	LIGHTER	0	-1.6	HEAVIER
BLUE ROAN (%)	0%	50%	91	100%

**THE HEAVILY PROVEN
CALVING EASE SIRE**

DATA PROVEN



Ear Tag: UK102530701212 AI Code: BB1588

KELOWNA MOJO

MOJO



Ultraplus Male



SCAN THE CODE TO
TO SEE PROGENY VIDEOS



GESTATION LENGTH (D)	LONGER	285	284	SHORTER
CALVING DIFFICULTY (%)	HARDER	5	2.0	EASIER
CALF VIGOUR (UNITS)	- VIGOROUS	1	1.3	+ VIGOROUS
CALF QUALITY (%)	POORER	80	92.0	EXCELLENT
BIRTH WEIGHT (KG)	LIGHTER	0	-1.6	HEAVIER
BLUE ROAN (%)	0%	50%	94	100%

**EXCEPTIONAL CALF
QUALITY COUPLED WITH
CALVING EASE**



DATA PROVEN



Ear Tag: UK222596201204 AI Code: BB1716

KERSEY NIMBUS

NIMBUS



Ultraplus[™] Male



SCAN THE CODE TO
TO SEE PROGENY VIDEOS



QUALITY AND
CONSISTENCY THROUGH
ALL TRAITS

GESTATION LENGTH (D)	LONGER	285	281	SHORTER
CALVING DIFFICULTY (%)	HARDER	5	1.2	EASIER
CALF VIGOUR (UNITS)	- VIGOROUS	1	1.5	+ VIGOROUS
CALF QUALITY (%)	POORER	80	92.7	EXCELLENT
BIRTH WEIGHT (KG)	LIGHTER	0	-0.1	HEAVIER
BLUE ROAN (%)	0%	50%	91	100%

DATA PROVEN



Ear Tag: UK222596601208 AI Code: BB1715

KERSEY ORION

ORION



SCAN THE CODE TO
TO SEE PROGENY VIDEOS



GESTATION LENGTH (D)	LONGER	285	279	SHORTER
CALVING DIFFICULTY (%)	HARDER	5	1.9	EASIER
CALF VIGOUR (UNITS)	- VIGOROUS	1	1.2	+ VIGOROUS
CALF QUALITY (%)	POORER	80	89.6	EXCELLENT
BIRTH WEIGHT (KG)	LIGHTER	0	-1.5	HEAVIER
BLUE ROAN (%)	0%	50%	83	100%

THE HEAVILY PROVEN
£EMI SPECIALIST

DATA PROVEN



Ear Tag: UK715984100027 AI Code: BB1824

OLD STACKYARD BLUES POLO

POLO



Ultraplus[™] Male



GESTATION LENGTH (D)	LONGER	285	281	SHORTER
CALVING DIFFICULTY (%)	HARDER	5	2.1	EASIER
CALF VIGOUR (UNITS)	- VIGOROUS	1	1.5	+ VIGOROUS
CALF QUALITY (%)	POORER	80	89.2	EXCELLENT
BIRTH WEIGHT (KG)	LIGHTER	0	0.7	HEAVIER
BLUE ROAN (%)	0%	50%	90	100%

EASY CALVING, LIGHT BLUE ROAN CALVES

SCAN THE CODE TO TO SEE PROGENY VIDEOS



DATA PROVEN



Ear Tag: UK102530301369 AI Code: BB1823

KELOWNA OSIRIS

OSIRIS



Ultraplus[™] Male



GESTATION LENGTH (D)	LONGER	285	281	SHORTER
CALVING DIFFICULTY (%)	HARDER	5	2.5	EASIER
CALF VIGOUR (UNITS)	- VIGOROUS	1	1.4	+ VIGOROUS
CALF QUALITY (%)	POORER	80	90.4	EXCELLENT
BIRTH WEIGHT (KG)	LIGHTER	0	-1.0	HEAVIER
BLUE ROAN (%)	0%	50%	97	100%

A LEADING CALVING EASE SIRE

SCAN THE CODE TO TO SEE PROGENY VIDEOS



DATA PROVEN



Ear Tag: UK104493600601 AI Code: BB1798

MAIDENLANDS ODDS ON

ODDS ON



Ultraplus™ Male



SCAN THE CODE TO
TO SEE PROGENY VIDEOS



GESTATION LENGTH (D)	LONGER	285	282	SHORTER
CALVING DIFFICULTY (%)	HARDER	5	2.2	EASIER
CALF VIGOUR (UNITS)	- VIGOROUS	1	1.5	+ VIGOROUS
CALF QUALITY (%)	POORER	80	87.1	EXCELLENT
BIRTH WEIGHT (KG)	LIGHTER	0	-0.8	HEAVIER
BLUE ROAN (%)	0%	50%	96	100%

QUALITY AND
CONSISTENCY THROUGH
ALL TRAITS

DATA PROVEN



Ear Tag: UK222596401339 AI Code: BB1833

CBL PATHFINDER

PATHFINDER



NEW
SIRE



SCAN THE CODE TO
TO SEE PROGENY VIDEOS



GESTATION LENGTH (D)	LONGER	285	278	SHORTER
CALVING DIFFICULTY (%)	HARDER	5	1.1	EASIER
CALF VIGOUR (UNITS)	- VIGOROUS	1	1.7	+ VIGOROUS
CALF QUALITY (%)	POORER	80	98.4	EXCELLENT
BIRTH WEIGHT (KG)	LIGHTER	0	0.7	HEAVIER
BLUE ROAN (%)	0%	50%	93	100%

THE COMPLETE PACKAGE,
SHORT GESTATION LENGTH,
CALVING EASE AND QUALITY

DATA PROVEN



Ear Tag: UK222596201344 AI Code: BB1834

CBL PYTHON

PYTHON

CBI

£59.60

EMI

£56.10

MVI

£3.50

NEW SIRE



ELITE CGI SIRE

SCAN THE CODE TO
TO SEE PROGENY VIDEOS



A SUPERIOR CALF QUALITY SIRE

GESTATION LENGTH (D)	LONGER	285	281	SHORTER
CALVING DIFFICULTY (%)	HARDER	5	1.8	EASIER
CALF VIGOUR (UNITS)	- VIGOROUS	1	1.6	+ VIGOROUS
CALF QUALITY (%)	POORER	80	99.2	EXCELLENT
BIRTH WEIGHT (KG)	LIGHTER	0	0.3	HEAVIER
BLUE ROAN (%)	0%	50%	100	100%

DATA PROVEN



Ear Tag: UK715984200028 AI Code: BB1825

OLD STACKYARD BLUES POWER

POWER

CBI

£42.40

EMI

£39.40

MVI

£3.00

NEW SIRE



ELITE CGI SIRE

SCAN THE CODE TO
TO SEE PROGENY VIDEOS



QUALITY AND CONSISTENCY THROUGH ALL TRAITS

GESTATION LENGTH (D)	LONGER	285	283	SHORTER
CALVING DIFFICULTY (%)	HARDER	5	2.7	EASIER
CALF VIGOUR (UNITS)	- VIGOROUS	1	1.6	+ VIGOROUS
CALF QUALITY (%)	POORER	80	95.5	EXCELLENT
BIRTH WEIGHT (KG)	LIGHTER	0	2.3	HEAVIER
BLUE ROAN (%)	0%	50%	100	100%

DATA PROVEN



Ear Tag: UK102530301418 AI Code: BB1876

CBL PLASMA

PLASMA



Ultraplus[™] Male

NEW SIRE



SCAN THE CODE TO
TO SEE PROGENY VIDEOS



**GESTATION LENGTH
SPECIALIST LINKING CALF
QUALITY WITH LOW BIRTH WEIGHT**

GESTATION LENGTH (D)	LONGER	285	279	SHORTER
CALVING DIFFICULTY (%)	HARDER	5	1.3	EASIER
CALF VIGOUR (UNITS)	- VIGOROUS	1	1.7	+ VIGOROUS
CALF QUALITY (%)	POORER	80	92.9	EXCELLENT
BIRTH WEIGHT (KG)	LIGHTER	0	-2.6	HEAVIER
BLUE ROAN (%)	0%	50%	93	100%

DATA PROVEN



Ear Tag: UK116863300075 AI Code: BB1847

LUCE WATER PARTY BOY

PARTY BOY



NEW SIRE



SCAN THE CODE TO
TO SEE PROGENY VIDEOS



**A SUPERIOR CALF
QUALITY SIRE**

GESTATION LENGTH (D)	LONGER	285	280	SHORTER
CALVING DIFFICULTY (%)	HARDER	5	3.5	EASIER
CALF VIGOUR (UNITS)	- VIGOROUS	1	1.7	+ VIGOROUS
CALF QUALITY (%)	POORER	80	90.3	EXCELLENT
BIRTH WEIGHT (KG)	LIGHTER	0	2.1	HEAVIER
BLUE ROAN (%)	0%	50%	98	100%



MVI BRITISH BLUE

British Blue sires specialising in producing high value calves by maximising the major Market Value traits - Birth Weight, Calf Quality and Growth.



AHDB NATIONAL BEEF EVALUATIONS



Estimated Breeding Values to help with selection of bulls based on their genetic potential for carcase performance.

NAME	MVI (£)	CALF QUALITY (%)	CALF WEIGHT (KG)	CARCASE WEIGHT EBV	FAT CLASS EBV	CONFORMATION EBV	SLAUGHTER AGE EBV
AUCHENLAY HITMAN	30.90	91.5	1.9	8.18	-3.44	2.79	-18.40
KELOWNA MOJO	23.70	92.0	-1.6	12.70	-4.97	4.31	-18.17
KERSEY NIMBUS	20.20	92.7	-0.1	10.99	-3.74	2.92	1.62
MAIDENLANDS ODDS ON	20.00	87.1	-0.8	5.64	-2.89	2.06	5.67
KERSEY ORION	18.10	89.6	-1.5	16.49	-4.72	3.45	3.41
OLD STACKYARD BLUES POLO	13.40	89.2	0.7	8.19	-3.31	2.89	-2.11
KELOWNA OSIRIS	12.60	90.4	-1.0	10.17	-2.94	2.28	0.51
CBL PLASMA	11.50	92.9	-2.6	9.38	-3.35	1.43	-22.66
KERSEY KINGPIN	11.50	87.1	-1.6	11.46	-4.38	3.17	0.60
CBL PATHFINDER	5.70	98.4	0.7	6.85	-3.32	2.34	10.72
LUCE WATER PARTY BOY	4.10	90.3	2.1	13.38	-4.45	4.56	2.72
CBL PYTHON	3.50	99.2	0.3	7.19	-3.54	1.85	5.81
OLD STACKYARD BLUES POWER	3.00	95.5	2.3	10.48	-3.72	3.24	-2.89

BRITISH BLUE

SCAN THE CODE TO FIND MORE ABOUT EMI & MVI



Make the right choice with your future breeding



MEADOW QUALITY

LIVESTOCK TRADING SINCE 1975

Meadow Quality Limited (MQL) is an independent 100% British Farmer owned livestock marketing business, that purchases calves between 2 and 6 weeks of age from dairy producers, procuring calves from around 800-1,000 dairy farms annually, predominantly in England and Wales.

MQL produces an annual Superior Sires list, and our 2023 list contains 17 Sires from the Cogent stud. We operate a simple weekly pricing matrix that is circulated to our customers, showing the most competitive prices we are paying for calves by breed, for both clean and TB-restricted calves.



MQL run collection centres in two locations: Chippenham in Wiltshire and Ash in Shropshire. We collect calves 51 weeks of the year for clean calves and hold 2 TB collections each month in our Wiltshire centre. These are often over-subscribed, and we do support those customers who are loyal to us i.e., those who sell calves to us if they are under TB restriction or not. The restrictions on TB calves are governed by the number of buyers with AFU units for both rearing of calves and finishing of beef animals.

It's important to us that our dairy farmer suppliers treat all calves we buy with the same care and attention. Colostrum as early in life as possible, then milk powder or pasteurised milk, so that the calves grow at a rate of a minimum of 500g/day in the first two to six weeks of life. We do not expect dairy farmers to castrate or dis-bud calves, as we buy all our young calves under six weeks of age.



MQL have 12 full-time fieldsmen on the road in the calf division, so if you're interested in working with us the first step would be to contact us directly:

North Midlands & North Wales	Julian Dale	07714 321169
Midlands	Simon Fryar	07703 563787
South & South West	Dale Buckingham	07585 224077
West & South Wales	Adrian Bowen	07736 056712

Email us at info@meadowq.co.uk

PROVISIONAL DATA



Ear Tag: UK122919400995 AI Code: CH4020

WHITECLIFFE ORWELL

ORWELL

CBI

£70.30

EMI

£39.60

MVI

£30.70

Ultraplus[™] Male



SCAN THE CODE TO

TO SEE PROGENY VIDEOS



SEMEN ROYALTY SIRE

GESTATION LENGTH (D)	LONGER	285	<div style="width: 100%;"></div>	283	SHORTER
CALVING DIFFICULTY (%)	HARDER	5	<div style="width: 100%;"></div>	2.4	EASIER
CALF VIGOUR (UNITS)	- VIGOROUS	1	<div style="width: 100%;"></div>	1.3	+ VIGOROUS
CALF QUALITY (%)	POORER	80	<div style="width: 100%;"></div>	95.5	EXCELLENT
BIRTH WEIGHT (KG)	LIGHTER	0	<div style="width: 100%;"></div>	-2.4	HEAVIER

**AN EASY-CALVING SIRE
WITH A SHORT GESTATION
LENGTH**

DATA PROVEN



Ear Tag: UK103719503098 AI Code: H9277

NETHERHALL 1 MATTY S098 (P)

MATTY

CBI

£82.90

EMI

£69.00

MVI

£13.90

Ultraplus[™] Male



SCAN THE CODE TO

TO SEE PROGENY VIDEOS



SEMEN ROYALTY SIRE



GESTATION LENGTH (D)	LONGER	285	<div style="width: 100%;"></div>	279	SHORTER
CALVING DIFFICULTY (%)	HARDER	5	<div style="width: 100%;"></div>	1.9	EASIER
CALF VIGOUR (UNITS)	- VIGOROUS	1	<div style="width: 100%;"></div>	1.3	+ VIGOROUS
CALF QUALITY (%)	POORER	80	<div style="width: 100%;"></div>	88.8	EXCELLENT
BIRTH WEIGHT (KG)	LIGHTER	0	<div style="width: 100%;"></div>	0.8	HEAVIER

**AN EXCEPTIONAL CALF
QUALITY SIRE WITH A SHORT
GESTATION LENGTH**

DATA PROVEN



Ear Tag: UK167077400201 AI Code: H9262

SKY HIGH 1 TAKE-A-CHANCE (P)
TAKE-A-CHANCE



NEW SIRE



GESTATION LENGTH (D)	LONGER	285		283	SHORTER
CALVING DIFFICULTY (%)	HARDER	5		1.7	EASIER
CALF VIGOUR (UNITS)	- VIGOROUS	1		1.3	+ VIGOROUS
CALF QUALITY (%)	POORER	80		87.3	EXCELLENT
BIRTH WEIGHT (KG)	LIGHTER	0		-3.3	HEAVIER

CALF QUALITY AND CONSISTENCY THROUGH ALL TRAITS

SCAN THE CODE TO
TO SEE PROGENY VIDEOS



SEMEN ROYALTY SIRE

PROVISIONAL DATA



Ear Tag: UK103719703247 AI Code: H9244

NETHERHALL 1 MINDSET (P)
MINDSET



NEW SIRE

Ultraplus Male



GESTATION LENGTH (D)	LONGER	285		277	SHORTER
CALVING DIFFICULTY (%)	HARDER	5		1.5	EASIER
CALF VIGOUR (UNITS)	- VIGOROUS	1		1.2	+ VIGOROUS
CALF QUALITY (%)	POORER	80		74.0	EXCELLENT
BIRTH WEIGHT (KG)	LIGHTER	0		-1.1	HEAVIER

A SHORT GESTATION SPECIALIST LINKING CALF QUALITY WITH LOW BIRTH WEIGHT

SCAN THE CODE TO
TO SEE PROGENY VIDEOS



SEMEN ROYALTY SIRE

DATA PROVEN



Ear Tag: IE221062721390 AI Code: LN2755

ELITE LACETTE

LACETTE

CBI

£41.30

EMI

£9.60

MVI

£31.70

Ultraplus Male



SCAN THE CODE TO
TO SEE PROGENY VIDEOS



SEMEN ROYALTY SIRE

GESTATION LENGTH (D)	LONGER	285	287	SHORTER
CALVING DIFFICULTY (%)	HARDER	5	2.5	EASIER
CALF VIGOUR (UNITS)	- VIGOROUS	1	1.4	+ VIGOROUS
CALF QUALITY (%)	POORER	80	95.0	EXCELLENT
BIRTH WEIGHT (KG)	LIGHTER	0	-2.4	HEAVIER

**EXCEPTIONAL CALF
QUALITY COUPLED WITH
CALVING EASE**

PROVISIONAL DATA



Ear Tag: UK305928401634 AI Code: LN2844

TWEMLOWS OFFICER

OFFICER

CBI

£45.80

EMI

£25.80

MVI

£20.10

Ultraplus Male



SCAN THE CODE TO
TO SEE PROGENY VIDEOS



SEMEN ROYALTY SIRE

GESTATION LENGTH (D)	LONGER	285	286	SHORTER
CALVING DIFFICULTY (%)	HARDER	5	1.0	EASIER
CALF VIGOUR (UNITS)	- VIGOROUS	1	1.2	+ VIGOROUS
CALF QUALITY (%)	POORER	80	90.4	EXCELLENT
BIRTH WEIGHT (KG)	LIGHTER	0	-2.0	HEAVIER

**CALVING EASE SPECIALIST
WITH SHORT GESTATIONS**



Ear Tag: FR4242601434 AI Code: CH3931



Ear Tag: FR7122266776 AI Code: CH3932

NIAGARA

- ✓ **PROVEN SIRE**
- ✓ **EASY CALVING CREDENTIALS**
- ✓ **EXPECT CALVES TO BE FULL OF VITALITY AND GROW QUICKLY**

SCAN THE CODE TO
TO SEE PROGENY VIDEOS



LUTIN

- ✓ **HEAVILY PROVEN SIRE**
- ✓ **HETEROZYGOUS POLLED**
- ✓ **PRODUCES CALVES WITH OUTSTANDING QUALITY AND MODERATE BIRTH WEIGHTS**

SCAN THE CODE TO
TO SEE PROGENY VIDEOS



PRIMESTART COLOSTRUM

A complete replacer for the newborn calf



Future health, growth and performance will be influenced greatly by the quality of the colostrum calves receive in the first hours and days of their life.

A 700g sachet of Cogent's PrimeStart colostrum makes up to two litres and contains:

- High levels of harvested colostrum
- Essential nutrients
- A high fat content at 21%

FREE FROM

- ✓ TB
- ✓ EBL
- ✓ IBR
- ✓ JOHNES



www.cogentuk.com
FREEPHONE: 0800 783 7258

BUITELAAR LONGHORN SCHEME CONTINUES TO FLOURISH

Now in its fifth year, Buitelaar Group's Longhorn Scheme continues to go from strength to strength.

Buitelaar's fixed premium calf prices and scheme security benefits have instigated unprecedented demand for England's oldest breed with the dairy farmer.

HOW DOES IT WORK?

Not only does the dairy farmer benefit from guaranteed fixed, premium calf prices from the day semen is purchased, Buitelaar deliver on a TB calf guarantee, ensuring shut down farms are able to continue with business as usual.

To be eligible for such business security, dairy farmers with qualifying herds (cows exceeding 600kg average) must supply the Longhorn calf at a healthy 55kg or above at 2-4 weeks of age, irrespective of grade.

Farmers may deliver their calves or choose Buitelaar organised transport into one of their four Collection Centres, where calves are health checked and placed into even batches ready for one of Buitelaar's beef farmers to take from rearing through to fat.

Dairy Farmer, Michael Oakes said: "I get the assurance of a fixed price going forward, removing some of the volatility in the marketplace. Additionally, the contract gives me reassurance that I have a home for all calves should I be shut down with TB."

WHY THE LONGHORN?

With rapidly changing eating habits and a more planet conscious consumer in recent years, Buitelaar is working with select dairy farmers and finishers to establish a securely integrated supply chain, delivering nutrient dense Longhorn beef which offers extraordinary taste, coupled with a rich history.

It was the Longhorn's suitability to the entire supply chain; the dairy farmer, the finisher and the consumer's requirements that secured its place as Buitelaar's signature breed.

With a docile nature, short gestation, easy calving and a resulting hardy, spritely calf, the Longhorn is renowned for being particularly low maintenance when compared to their continental counterparts.



As a breed which has seen little genetic interference, Longhorn cattle also hold highly desirable attributes for the finisher.

Historically bred to provide meat for the masses during the industrial revolution, the traditional breed heavily compliments the dairy dam and fattens easily on poor ground, resulting in an animal less reliant on imported grains.

AN EXCEPTIONAL END PRODUCT

The calm and docile nature of the Longhorn produces a relaxed meat, offering superior eating qualities that has led to an unparalleled demand for meat.

Buitelaar Meat Sales Manager, Oliver King said: "The meat speaks for itself, our customers love the product, it's exceptionally tender and has an excellent flavour profile."



Destined for Michelin restaurants, the product quality has not gone unnoticed, receiving two sought after and prestigious industry awards in 2022, reflecting the passion and commitment from one end of the chain to the other. All whilst providing the customer with a product that makes a positive environmental impact.

PREMIUMS OFFERED ON NATIVE SIRED CALVES

Committed to connecting farmer and consumer, Buitelaar's regenerative ambitions have lead to a focus on traditional breeds that will thrive on low-input models for an increasingly sustainable supply chain and premium end product. As such, Buitelaar are offering £20 over grid price for calves by the below select sires.

NETHERHALL 1
MATTY S098



WIRRUNA
LENNON L102



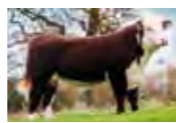
NETHERHALL 1 OZ
DAFFY M024 (P)



CHAPELTON
PIONEER (P)



GOULDINGPOLL 1
DUNCAN



ELLIOT
FORTNITE (P)



GET IN TOUCH: 01244 293130

@buitelaargroup

info@buitelaargroup.com

www.buitelaargroup.com

Ultraplus Male



Ear Tag: UK200538301182 AI Code: LH0904

BLACKBROOK FREDDIE

FREDDIE

- ✓ THE COMBINATION OF TWO OUTSTANDING FAMILY LINES
- ✓ WELL-MUSCLED WITH A MODERATE FRAME
- ✓ EXPECT EASILY BORN PROGENY WITH GREAT CONFORMATION

SCAN THE CODE TO
 TO SEE PROGENY VIDEOS



LONGHORN

NOT FOR PEDIGREE USE



Ear Tag: UK200538401162 AI Code: LH0899

BLACKBROOK FLASH HARRY

FLASH HARRY

- ✓ ORIGINATES FROM AN EASY CALVING FAMILY
- ✓ A LONG CLEAN BULL SHOWING EXCEPTIONAL GROWTH
- ✓ EXPECT CALVES TO GROW QUICKLY AND DISPLAY THEIR SIRE'S CREDENTIALS

SCAN THE CODE TO
 TO SEE PROGENY VIDEOS



NOT FOR PEDIGREE USE

51



COGENT WAGYU

THE PREMIUM BEEF BRAND

Ear Tag: DE0954826447 AI Code: MS0070

MR NANASHI

NANASHI

AN ELITE EYE MUSCLE SIRE

OUTCROSS GENETICS TO
MANY EUROPEAN LINES

PROGENY THAT ARE EASILY BORN
WITH LOW BIRTH WEIGHTS



Ultraplus[™] Male



Ear Tag: UK317544700124 AI Code: MS0091

WYNDFORD DIABLO

DIABLO

UK-BRED

TOP 1% OF THE BREED FOR MARBLING

TOP 10% OF THE BREED
FOR EYE MUSCLE AREA



Ultraplus[™] Male





NEW SIRE

Ear Tag: UK744463402185 AI Code: WB1063



NEW SIRE

Ear Tag: UK942210315735 AI Code: BL1141



NEW SIRE

Ear Tag: UK561544400221 AI Code: SG1409

CARAN CALEB 5TH

CALEB

- ✓ EXCITING NEW WELSH BLACK SIRE
- ✓ DISPLAYING EXCEPTIONAL WIDTH AND GROWTH
- ✓ A PEDIGREE PACKED WITH EASY CALVING GENETICS



SILVERWOOD SALAH

SALAH

- ✓ FINE BONED AND WELL-MUSCLED
- ✓ A PEDIGREE FULL OF EASY CALVING GENETICS
- ✓ EXPECT CALVES TO BE BORN SMALL AND SHOW GOOD CONFORMATION



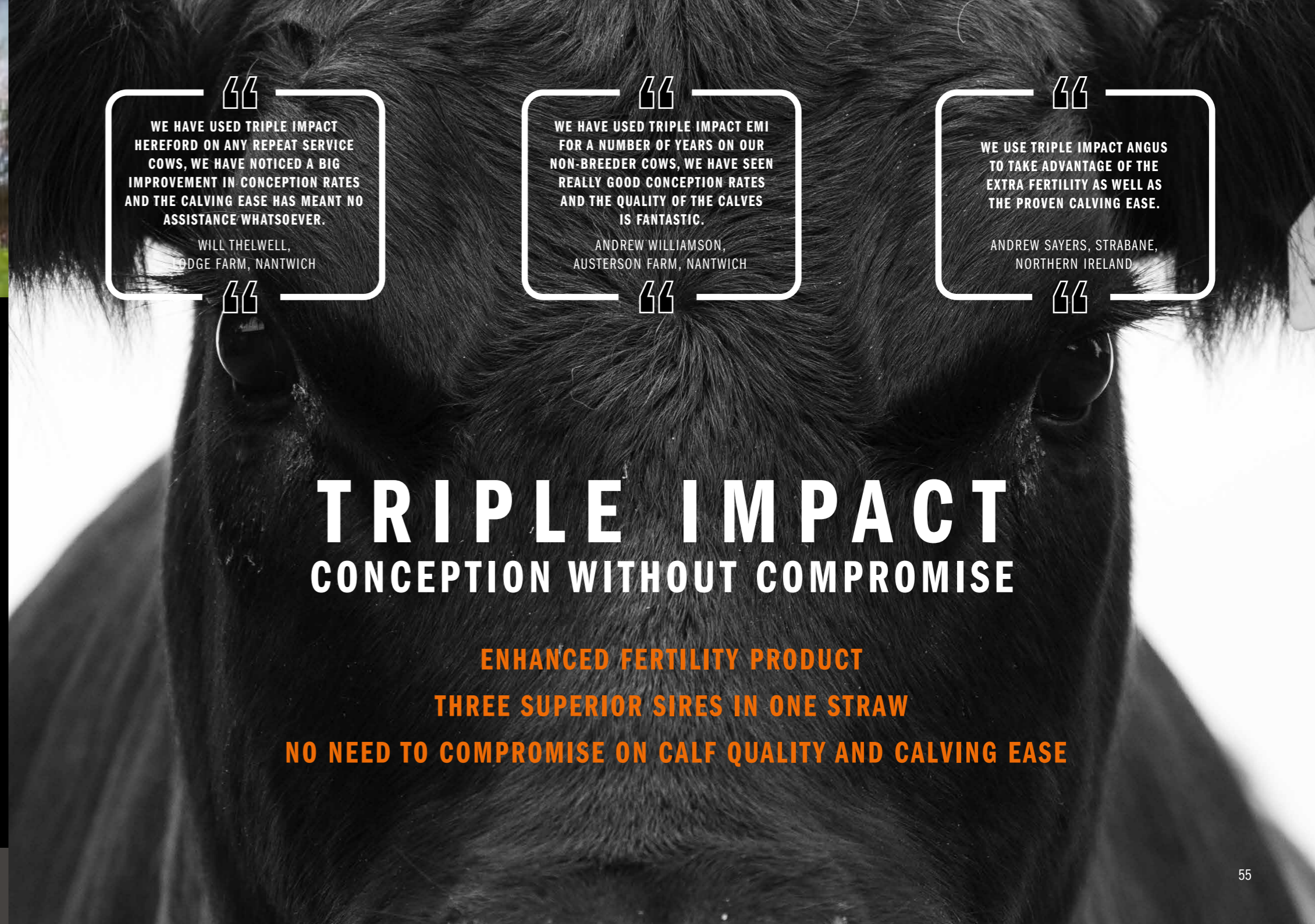
FALLHILLS MARVEL 21 (P)

MARVEL

- ✓ AN EASY FLESHED WELL-MUSCLED BULL
- ✓ RANKING IN THE TOP 10% OF THE BREED FOR CALVING EASE
- ✓ RANKING IN TOP 10% OF THE BREED FOR GESTATION LENGTH



SEMEN ROYALTY SIRE



“ WE HAVE USED TRIPLE IMPACT HEREFORD ON ANY REPEAT SERVICE COWS, WE HAVE NOTICED A BIG IMPROVEMENT IN CONCEPTION RATES AND THE CALVING EASE HAS MEANT NO ASSISTANCE WHATSOEVER. ”

WILL THELWELL,
LODGE FARM, NANTWICH

“ WE HAVE USED TRIPLE IMPACT EMI FOR A NUMBER OF YEARS ON OUR NON-BREEDER COWS, WE HAVE SEEN REALLY GOOD CONCEPTION RATES AND THE QUALITY OF THE CALVES IS FANTASTIC. ”

ANDREW WILLIAMSON,
AUSTERSON FARM, NANTWICH

“ WE USE TRIPLE IMPACT ANGUS TO TAKE ADVANTAGE OF THE EXTRA FERTILITY AS WELL AS THE PROVEN CALVING EASE. ”

ANDREW SAYERS, STRABANE,
NORTHERN IRELAND

TRIPLE IMPACT CONCEPTION WITHOUT COMPROMISE

ENHANCED FERTILITY PRODUCT
THREE SUPERIOR SIRES IN ONE STRAW
NO NEED TO COMPROMISE ON CALF QUALITY AND CALVING EASE