



HOLSTEIN

DECEMBER 2019 CATALOGUE



BE PROFITABLE. **BE COGENT**





Welcome to the December edition of the Cogent Holstein Catalogue.

Working alongside the supply chain, Cogent has invested heavily in research and development to ensure our products are in line with customer needs. Technological advancements within cattle breeding now offer dairy farmers the potential to significantly improve farm returns, through accelerated genetic gains, increased beef calf values, and the reduction of unwanted and low value dairy bred bull calves.

Conception rates from SexedULTRA 4M are now comparable to conventional, giving farmers a tremendous opportunity to breed a more profitable herd, through a focused selection policy that can be tailored to the farms system and milk contract. If you want to remain competitive in the dairy industry, making informed and progressive breeding decisions which maximise the returns from every straw used, is a vital part of your business strategy.

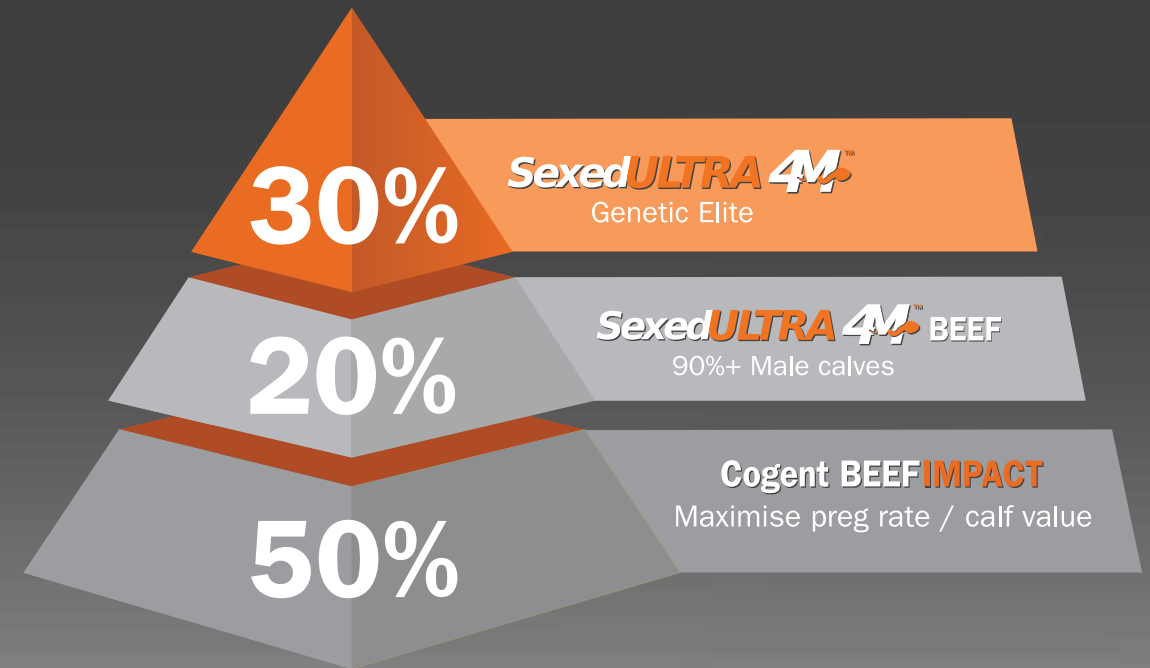
BE PROFITABLE.
BE COGENT

| | | | | | | | | | |
|----|---------------|------------|----|-----------|------------|------------|------------|----|------------|
| 6 | AARON | NEW | 16 | CURSOR | 28 | LUCIFER | NEW | 38 | REDROCK |
| 6 | ACHAN | | 17 | CYPRUS | 29 | MAMBO | | 39 | RUBICON |
| 7 | ACHIEVE | | 17 | DANGER | 29 | MARDI | NEW | 39 | RUBI-HAZE |
| 7 | AGRONAUT | | 18 | DAWSON | 30 | MARDI GRAS | | 40 | SCENIC |
| 8 | ALADDIN-RED | | 18 | DROGO | NEW | 30 | MAROON | 40 | SCORE |
| 8 | ANTON PP | | 19 | DYNAMO | 31 | MASTERMIND | | 41 | SHIELD RED |
| 9 | APPLEFREE RED | | 19 | ESQUIRE | 31 | MILIO | NEW | 41 | SHILLING |
| 9 | ARISTOCRAT | | 20 | EVOLVE P | 32 | MITCHELL | | 42 | SHOOTER |
| 10 | AWESOME RED | | 20 | FANTASTIC | 32 | MIXER | NEW | 42 | SILVERADO |
| 10 | B52 | | 21 | FLICK | NEW | 33 | NASHVILLE | 43 | SUPERSHOT |
| 11 | BATTLE | | 21 | FLINCH | 33 | NEAL | | 43 | SUPREME |
| 11 | BLIZZARD | | 22 | GOODWHONE | 34 | NORTON | | 44 | TAZ |
| 12 | BREEZER | | 22 | HANIKO | 34 | OVERTIME | | 44 | TWITCH |
| 12 | CAMILO | NEW | 23 | HANNIBAL | 35 | PACO | | 45 | WATSON |
| 13 | CHARL | | 23 | HOLLAND | 35 | POPEYE | | 45 | YAGER |
| 13 | CHIEF | | 26 | IMPORT | NEW | 36 | PORTER | | |
| 14 | CONFIDE | | 26 | JONES | 36 | PORTO | NEW | | |
| 15 | CORONA | | 27 | JORDY RED | 37 | RAPID | | | |
| 15 | CROWN ROYAL | | 27 | LAMBDA | 37 | RAVEN | | | |
| 16 | CRUSHTIME | | 28 | LANCASTER | 38 | RAZZY | NEW | | |



THE ULTIMATE BREEDING STRATEGY.

Are you missing out?



Are you confident you are using the right genetics, in the right areas, to maximise the profit in your calves?

The Cogent Ultimate Breeding strategy has been designed to make full use of and derive profit from every pregnancy you achieve on farm.

By using this strategy, and supported by our world renowned genetics and our industry leading SexedULTRA 4M, we believe that you can deliver the full profitability of your herd.

Contact your local Genetic Consultant to find out how we can help impact your genetics and maximise profit per pregnancy.

BE PROFITABLE. BE COGENT



www.cogentuk.com



NH DG AARON

Undenied x Monterey x Mogul



DAM AL-LEW MONTEREY ASHLEY VG89

HBN: HOLDEU000770753372 AI Code: H05893
Dam: Al-Lew Monterey Ashley 1346 VG89 2yr
2nd Dam: Al-Lew Mgl Astute 1207 EX91
3rd Dam: Al-Lew Dmn Amazon 1059 EX90

| PRODUCTION DTRS 0 HERDS 0 Dec 2019 SOURCE GBR | | | | |
|---|---------|----------|------|-----------|
| Milk Kgs | Fat Kgs | Prot Kgs | £SCI | PLI £305 |
| 461 | 23.8 | 15 | 48 | |
| Rel% | Fat% | Prot% | £ACI | £PLI Rel% |
| 67 | 0.07 | 0 | 179 | 64 |

| | -2 | -1 | 0 | 1 | 2 | |
|------------------|----|----|---|---|---|----------------|
| UK Type Merit | | | | | | 3.48 Excellent |
| UK Udder Comp | | | | | | 2.85 Excellent |
| UK Feet and Legs | | | | | | 1.35 Excellent |
| Stature | | | | | | 2.77 Taller |
| Chest Width | | | | | | 0.57 Wide |
| Body Depth | | | | | | 1.45 Deep |
| Angularity | | | | | | 1.36 Open Rib |
| Rump Angle | | | | | | -0.98 Higher |
| Rump Width | | | | | | 2.23 Wide |
| Rear Leg Side | | | | | | 0.06 Sickled |
| Foot Angle | | | | | | 0.68 Steep |
| F.Udder Attach | | | | | | 2.89 Tight |
| R. Udder Height | | | | | | 2.5 Very High |
| Udder Support | | | | | | 2.16 Strong |
| Udder Depth | | | | | | 2.67 Shallow |
| F.Teat Placement | | | | | | 2.09 Close |
| Teat Length | | | | | | -0.6 Shorter |
| R.Teat Placement | | | | | | 1.89 Close |
| Teat Pos Side | | | | | | 1.34 Apart |
| Locomotion | | | | | | 1.83 Excellent |

| Daughters in Herds 0 Dtrs 0 Herds 54% Rel | | | | |
|---|------|----------|-----------------|----------------|
| Fertility Index | 0.5 | Improver | Condition Score | -0.52 Low |
| Lifespan | 57 | Improver | Maintenance | 26 High |
| Direct Calving Ease | -1.0 | Harder | Calf Survival | 1.9 Improver |
| SCC | -3 | Improver | Dairy Carcase | -0.3 Non Imp |
| Mastitis | 0.0 | Average | Milking Speed | 2.23 Improver |
| TB Advantage | 0.3 | Average | Temperament | 1.26 Excellent |
| Lameness Adv | 1.6 | Improver | B/K Casein | A1A2/AA |

Type Data supplied by Holstein UK
Production and Fitness data supplied by AHDB Dairy



Boghill Glamour ACHAN HH5C

Achiever x Silver x Maurice



4TH DAM LARCREST COMET VG87

HBN: HOLGBR949027111526 AI Code: H05627
Dam: Glamour Boghill Silver Carol ET VG86
2nd Dam: Bo-Irish Maurice Carla ET
3rd Dam: Larcrest Carlin ET VG87

| PRODUCTION DTRS 0 HERDS 0 Dec 2019 SOURCE GBR | | | | |
|---|---------|----------|------|-----------|
| Milk Kgs | Fat Kgs | Prot Kgs | £SCI | PLI £753 |
| 595 | 34.8 | 22.8 | 452 | |
| Rel% | Fat% | Prot% | £ACI | £PLI Rel% |
| 67 | 0.13 | 0.04 | 651 | 63 |

| | -2 | -1 | 0 | 1 | 2 | |
|------------------|----|----|---|---|---|----------------|
| UK Type Merit | | | | | | 0.95 Excellent |
| UK Udder Comp | | | | | | 1.16 Excellent |
| UK Feet and Legs | | | | | | 0.84 Excellent |
| Stature | | | | | | -0.62 Shorter |
| Chest Width | | | | | | 0.08 Wide |
| Body Depth | | | | | | -1.19 Shallow |
| Angularity | | | | | | -0.82 Coarse |
| Rump Angle | | | | | | 0.17 Lower |
| Rump Width | | | | | | -0.17 Narrow |
| Rear Leg Side | | | | | | -0.72 Straight |
| Foot Angle | | | | | | 0.15 Steep |
| F.Udder Attach | | | | | | 0.88 Tight |
| R. Udder Height | | | | | | 1.3 Very High |
| Udder Support | | | | | | 1.31 Strong |
| Udder Depth | | | | | | 0.88 Shallow |
| F.Teat Placement | | | | | | 0.34 Close |
| Teat Length | | | | | | -0.37 Shorter |
| R.Teat Placement | | | | | | 1.08 Close |
| Teat Pos Side | | | | | | 0.15 Apart |
| Locomotion | | | | | | 0.95 Excellent |

| Daughters in Herds 0 Dtrs 0 Herds 54% Rel | | | | |
|---|------|----------|-----------------|---------------|
| Fertility Index | 13.5 | Improver | Condition Score | 1.01 High |
| Lifespan | 219 | Improver | Maintenance | -4 Low |
| Direct Calving Ease | 0.3 | Easy | Calf Survival | 0.1 Improver |
| SCC | -19 | Improver | Dairy Carcase | 1.2 Improver |
| Mastitis | -1.0 | Average | Milking Speed | 0.58 Improver |
| TB Advantage | -0.5 | Average | Temperament | 0.23 Average |
| Lameness Adv | 0.9 | Improver | B/K Casein | A2A2/AB |

Type Data supplied by Holstein UK
Production and Fitness data supplied by AHDB Dairy



Glamour ACHIEVE

Altaspring x Iota x Goldwyn



FULL SIS TO DAM GLAMOUR IOTA AMBROSIA VG87

HBN: HOLGBR917137316735 AI Code: H04230
Dam: Ballymacfin Iota Ambrosia ET
2nd Dam: Glamour Goldwyn Ambrosia ET VG86
3rd Dam: EK-Oseena Ambrosia EX95 2E

| PRODUCTION DTRS 16 HERDS 12 Dec 2019 SOURCE GBR | | | | |
|---|---------|----------|------|-----------|
| Milk Kgs | Fat Kgs | Prot Kgs | £SCI | PLI £631 |
| 531 | 27.1 | 21.7 | 350 | |
| Rel% | Fat% | Prot% | £ACI | £PLI Rel% |
| 81 | 0.07 | 0.05 | 525 | 73 |

| | -2 | -1 | 0 | 1 | 2 | |
|------------------|----|----|---|---|---|----------------|
| UK Type Merit | | | | | | 1.65 Excellent |
| UK Udder Comp | | | | | | 1.47 Excellent |
| UK Feet and Legs | | | | | | 1.34 Excellent |
| Stature | | | | | | 0.21 Average |
| Chest Width | | | | | | 1.06 Wide |
| Body Depth | | | | | | -0.41 Average |
| Angularity | | | | | | -0.68 Coarse |
| Rump Angle | | | | | | 0.25 Lower |
| Rump Width | | | | | | 0.62 Wide |
| Rear Leg Side | | | | | | -0.16 Straight |
| Foot Angle | | | | | | 0.49 Steep |
| F.Udder Attach | | | | | | 1.35 Tight |
| R. Udder Height | | | | | | 1.84 Very High |
| Udder Support | | | | | | 0.35 Strong |
| Udder Depth | | | | | | 1.34 Shallow |
| F.Teat Placement | | | | | | -0.24 Outside |
| Teat Length | | | | | | 1.48 Longer |
| R.Teat Placement | | | | | | 0.36 Close |
| Teat Pos Side | | | | | | 0.63 Apart |
| Locomotion | | | | | | 1.68 Excellent |

| Daughters in Herds 19 Dtrs 6 Herds 64% Rel | | | | |
|--|------|----------|-----------------|---------------|
| Fertility Index | 11.9 | Improver | Condition Score | 1.17 High |
| Lifespan | 143 | Improver | Maintenance | 10 High |
| Direct Calving Ease | -1.0 | Harder | Calf Survival | 2.8 Improver |
| SCC | -11 | Improver | Dairy Carcase | 2.0 Improver |
| Mastitis | -1.0 | Average | Milking Speed | -0.03 Average |
| TB Advantage | 1.4 | Improver | Temperament | 0.04 Average |
| Lameness Adv | 1.6 | Improver | B/K Casein | A2A2/AB |

Type Data supplied by Holstein UK
Production and Fitness data supplied by AHDB Dairy



Mr Rubi AGRONAUT 73287

Rubicon x Shotglass x Shamrock



MGGD KHW GOLDWYN AIKO EX91

HBN: HOL840003132198315 AI Code: H04797
Dam: Tjr Vail Ahmya 55300 ET
2nd Dam: KHW Shamrock Ahmya ET
3rd Dam: KHW Goldwyn Aiko ET EX91

| PRODUCTION DTRS 0 HERDS 0 Dec 2019 SOURCE GBR | | | | |
|---|---------|----------|------|-----------|
| Milk Kgs | Fat Kgs | Prot Kgs | £SCI | PLI £823 |
| 442 | 38.6 | 22.4 | 487 | |
| Rel% | Fat% | Prot% | £ACI | £PLI Rel% |
| 68 | 0.26 | 0.1 | 695 | 65 |

| | -2 | -1 | 0 | 1 | 2 | |
|------------------|----|----|---|---|---|----------------|
| UK Type Merit | | | | | | 2.61 Excellent |
| UK Udder Comp | | | | | | 1.95 Excellent |
| UK Feet and Legs | | | | | | 2.27 Excellent |
| Stature | | | | | | 0.01 Average |
| Chest Width | | | | | | 0.34 Wide |
| Body Depth | | | | | | -0.37 Average |
| Angularity | | | | | | 0.18 Open Rib |
| Rump Angle | | | | | | -0.06 Higher |
| Rump Width | | | | | | 0.08 Wide |
| Rear Leg Side | | | | | | -0.41 Straight |
| Foot Angle | | | | | | 1.06 Steep |
| F.Udder Attach | | | | | | 1.89 Tight |
| R. Udder Height | | | | | | 1.62 Very High |
| Udder Support | | | | | | 0.81 Strong |
| Udder Depth | | | | | | 1.77 Shallow |
| F.Teat Placement | | | | | | 1.45 Close |
| Teat Length | | | | | | -1.09 Shorter |
| R.Teat Placement | | | | | | 1.01 Close |
| Teat Pos Side | | | | | | 0.48 Apart |
| Locomotion | | | | | | 2.39 Excellent |

| Daughters in Herds 0 Dtrs 0 Herds 58% Rel | | | | |
|---|------|----------|-----------------|---------------|
| Fertility Index | 12.9 | Improver | Condition Score | 0.68 High |
| Lifespan | 234 | Improver | Maintenance | 2 High |
| Direct Calving Ease | -0.1 | Average | Calf Survival | -0.8 Non Imp |
| SCC | -30 | Improver | Dairy Carcase | 0.6 Improver |
| Mastitis | -3.0 | Improver | Milking Speed | -0.24 Average |
| TB Advantage | -0.3 | Average | Temperament | 0.33 Average |
| Lameness Adv | 1.0 | Improver | B/K Casein | A1A2/AE |

Type Data supplied by Holstein UK
Production and Fitness data supplied by AHDB Dairy



R DG ALADDIN-RED

Entitle x Olympian x Detox



GDAM BTS AVEA RED VG87

HBN: HOLNLD000573341225 AI Code: H04617
 Dam: R DG Avira Red ET VG85
 2nd Dam: BTS Avea Red VG87
 3rd Dam: KHW-I Aika Baxter ET RC VG89

| PRODUCTION DTRS 0 HERDS 0 Dec 2019 SOURCE GBR | | | | |
|---|---------|----------|------|-----------|
| Milk Kgs | Fat Kgs | Prot Kgs | £SCI | PLI £630 |
| 604 | 19.7 | 20.3 | 327 | |
| Rel% | Fat% | Prot% | £ACI | £PLI Rel% |
| 68 | -0.05 | 0.01 | 512 | 65 |

| | -2 | -1 | 0 | 1 | 2 | |
|------------------|----|----|---|---|---|----------------|
| UK Type Merit | | | | | | 2.17 Excellent |
| UK Udder Comp | | | | | | 2.2 Excellent |
| UK Feet and Legs | | | | | | 1.20 Excellent |
| Stature | | | | | | 0.49 Taller |
| Chest Width | | | | | | -0.07 Narrow |
| Body Depth | | | | | | -0.53 Shallow |
| Angularity | | | | | | -0.14 Coarse |
| Rump Angle | | | | | | 0.32 Lower |
| Rump Width | | | | | | -0.27 Narrow |
| Rear Leg Side | | | | | | 0.83 Sickled |
| Foot Angle | | | | | | 0.08 Steep |
| F.Udder Attach | | | | | | 2.47 Tight |
| R. Udder Height | | | | | | 2.22 Very High |
| Udder Support | | | | | | 0.97 Strong |
| Udder Depth | | | | | | 2.15 Shallow |
| F.Teat Placement | | | | | | 1.36 Close |
| Teat Length | | | | | | -0.44 Shorter |
| R.Teat Placement | | | | | | 1.05 Close |
| Teat Pos Side | | | | | | 0.42 Apart |
| Locomotion | | | | | | 1.27 Excellent |

Daughters in Herds | 0 Dtrs 0 Herds 55% Rel

| | | | | | |
|---------------------|------|----------|-----------------|---------|-----------|
| Fertility Index | 8.4 | Improver | Condition Score | 0.49 | High |
| Lifespan | 176 | Improver | Maintenance | 4 | High |
| Direct Calving Ease | 0.6 | Easy | Calf Survival | 3.8 | Improver |
| SCC | -30 | Improver | Dairy Carcase | -0.9 | Non Imp |
| Mastitis | -3.0 | Improver | Milking Speed | 0.04 | Average |
| TB Advantage | 1.1 | Improver | Temperament | 0.83 | Excellent |
| Lameness Adv | 0.5 | Improver | B/K Casein | A1A2/BB | |

Type Data supplied by Holstein UK

Production and Fitness data supplied by AHDB Dairy



SJK ANTON PP

Answer x Powerball P x Ladd P-Red



3RD DAM GEN-I-BEQ SNOWMAN AKILIA EX90

HBN: HOLNLD000520752955 AI Code: H05920
 Dam: Ekkel Aila P RC
 2nd Dam: Aikopol-Red
 3rd Dam: Gen-I-Beq Snowman Akilia EX90

| PRODUCTION DTRS 0 HERDS 0 Dec 2019 SOURCE GBR | | | | |
|---|---------|----------|------|-----------|
| Milk Kgs | Fat Kgs | Prot Kgs | £SCI | PLI £636 |
| 743 | 33.1 | 27.1 | 309 | |
| Rel% | Fat% | Prot% | £ACI | £PLI Rel% |
| 67 | 0.04 | 0.04 | 511 | 64 |

| | -2 | -1 | 0 | 1 | 2 | |
|------------------|----|----|---|---|---|----------------|
| UK Type Merit | | | | | | 2.14 Excellent |
| UK Udder Comp | | | | | | 1.88 Excellent |
| UK Feet and Legs | | | | | | 0.10 Excellent |
| Stature | | | | | | 0.69 Taller |
| Chest Width | | | | | | 0.12 Wide |
| Body Depth | | | | | | 0.24 Average |
| Angularity | | | | | | 1.43 Open Rib |
| Rump Angle | | | | | | 0.65 Lower |
| Rump Width | | | | | | 1 Wide |
| Rear Leg Side | | | | | | 0.62 Sickled |
| Foot Angle | | | | | | -0.65 Low |
| F.Udder Attach | | | | | | 1.51 Tight |
| R. Udder Height | | | | | | 2.41 Very High |
| Udder Support | | | | | | 0.69 Strong |
| Udder Depth | | | | | | 1.06 Shallow |
| F.Teat Placement | | | | | | 0.52 Close |
| Teat Length | | | | | | -1.78 Shorter |
| R.Teat Placement | | | | | | 0.19 Close |
| Teat Pos Side | | | | | | 0.77 Apart |
| Locomotion | | | | | | 0.03 Excellent |

Daughters in Herds | 0 Dtrs 0 Herds 54% Rel

| | | | | | |
|---------------------|------|----------|-----------------|---------|-----------|
| Fertility Index | 7.5 | Improver | Condition Score | -0.55 | Low |
| Lifespan | 143 | Improver | Maintenance | 4 | High |
| Direct Calving Ease | -0.7 | Harder | Calf Survival | 2.5 | Improver |
| SCC | -12 | Improver | Dairy Carcase | 0.2 | Improver |
| Mastitis | 0.0 | Average | Milking Speed | 0.86 | Improver |
| TB Advantage | 0.7 | Improver | Temperament | 0.82 | Excellent |
| Lameness Adv | 0.9 | Improver | B/K Casein | A1A2/AB | |

Type Data supplied by Holstein UK

Production and Fitness data supplied by AHDB Dairy



ST Gen RR APPLEFREE-RED

Revival Red x Delta x Sympatico RC



HBN: HOL840003132353140 AI Code: H05647
 Dam: Lismore Delta Anna ET VG87
 2nd Dam: Curr-Vale Sym Avelyn ET GP83
 3rd Dam: Curr-Vale Observer Avon VG85

| PRODUCTION DTRS 0 HERDS 0 Dec 2019 SOURCE GBR | | | | |
|---|---------|----------|------|-----------|
| Milk Kgs | Fat Kgs | Prot Kgs | £SCI | PLI £536 |
| 714 | 33.4 | 18.4 | 223 | |
| Rel% | Fat% | Prot% | £ACI | £PLI Rel% |
| 67 | 0.06 | -0.06 | 393 | 63 |

| | -2 | -1 | 0 | 1 | 2 | |
|------------------|----|----|---|---|---|----------------|
| UK Type Merit | | | | | | 2.72 Excellent |
| UK Udder Comp | | | | | | 1.91 Excellent |
| UK Feet and Legs | | | | | | 1.40 Excellent |
| Stature | | | | | | 1.11 Taller |
| Chest Width | | | | | | 1.15 Wide |
| Body Depth | | | | | | 0.75 Deep |
| Angularity | | | | | | 1.01 Open Rib |
| Rump Angle | | | | | | -0.27 Higher |
| Rump Width | | | | | | 0.2 Wide |
| Rear Leg Side | | | | | | 0.79 Sickled |
| Foot Angle | | | | | | 0.18 Steep |
| F.Udder Attach | | | | | | 2.06 Tight |
| R. Udder Height | | | | | | 1.37 Very High |
| Udder Support | | | | | | 0.93 Strong |
| Udder Depth | | | | | | 1.31 Shallow |
| F.Teat Placement | | | | | | 2.21 Close |
| Teat Length | | | | | | -1.1 Shorter |
| R.Teat Placement | | | | | | 1.33 Close |
| Teat Pos Side | | | | | | 0.41 Apart |
| Locomotion | | | | | | 1.88 Excellent |

Daughters in Herds | 0 Dtrs 0 Herds 53% Rel

| | | | | | |
|---------------------|------|----------|-----------------|---------|----------|
| Fertility Index | 6.6 | Improver | Condition Score | 0.14 | High |
| Lifespan | 140 | Improver | Maintenance | 16 | High |
| Direct Calving Ease | 0.1 | Average | Calf Survival | 0.6 | Improver |
| SCC | -17 | Improver | Dairy Carcase | -0.1 | Average |
| Mastitis | -2.0 | Improver | Milking Speed | 0.92 | Improver |
| TB Advantage | 0.1 | Average | Temperament | 0.40 | Average |
| Lameness Adv | 2.4 | Improver | B/K Casein | A2A2/AB | |

Type Data supplied by Holstein UK

Production and Fitness data supplied by AHDB Dairy



Mr Frazzled ARISTOCRAT

Frazzled x Monterey x Mogul



HBN: HOL840003142041200 AI Code: H05947
 Dam: Al-Lew Monterey Ashley 1346 VG89 2yr
 2nd Dam: Al-Lew Mgl Astute 1207 EX91
 3rd Dam: Al-Lew Dmn Amazon 1059 EX90

| PRODUCTION DTRS 0 HERDS 0 Dec 2019 SOURCE GBR | | | | |
|---|---------|----------|------|-----------|
| Milk Kgs | Fat Kgs | Prot Kgs | £SCI | PLI £698 |
| 903 | 31.3 | 27.2 | 321 | |
| Rel% | Fat% | Prot% | £ACI | £PLI Rel% |
| 68 | -0.05 | -0.02 | 528 | 64 |

| | -2 | -1 | 0 | 1 | 2 | |
|------------------|----|----|---|---|---|----------------|
| UK Type Merit | | | | | | 2.66 Excellent |
| UK Udder Comp | | | | | | 2.59 Excellent |
| UK Feet and Legs | | | | | | 1.08 Excellent |
| Stature | | | | | | 1.05 Taller |
| Chest Width | | | | | | 0.63 Wide |
| Body Depth | | | | | | 0.15 Average |
| Angularity | | | | | | 0.08 Open Rib |
| Rump Angle | | | | | | -0.09 Higher |
| Rump Width | | | | | | 0.72 Wide |
| Rear Leg Side | | | | | | 0.17 Sickled |
| Foot Angle | | | | | | -0.1 Low |
| F.Udder Attach | | | | | | 2.58 Tight |
| R. Udder Height | | | | | | 2.13 Very High |
| Udder Support | | | | | | 1.85 Strong |
| Udder Depth | | | | | | 2.18 Shallow |
| F.Teat Placement | | | | | | 1.79 Close |
| Teat Length | | | | | | -0.95 Shorter |
| R.Teat Placement | | | | | | 2.4 Close |
| Teat Pos Side | | | | | | 0.59 Apart |
| Locomotion | | | | | | 1.14 Excellent |

Daughters in Herds | 0 Dtrs 0 Herds 55% Rel

| | | | | | |
|---------------------|------|----------|-----------------|---------|----------|
| Fertility Index | 7.2 | Improver | Condition Score | 0.65 | High |
| Lifespan | 152 | Improver | Maintenance | 14 | High |
| Direct Calving Ease | -0.3 | Average | Calf Survival | 3.7 | Improver |
| SCC | -26 | Improver | Dairy Carcase | 1.7 | Improver |
| Mastitis | -3.0 | Improver | Milking Speed | -0.05 | Average |
| TB Advantage | 0.3 | Average | Temperament | 0.32 | Average |
| Lameness Adv | 2.0 | Improver | B/K Casein | A1A2/AE | |

Type Data supplied by Holstein UK

Production and Fitness data supplied by AHDB Dairy



Luck-E **AWESOME-RED** CVC

Absolute-Red x Advent-Red x Blitz



DTR SCHLUTER SHELBY LEE RED EX92

HBN: HOLUSA00072186769 AI Code: H03635
 Dam: Luck-E Advent Asia ET EX94
 2nd Dam: Luck-E Blitz Australia ET VG87
 3rd Dam: Luck-E Skychief Arizona-ET EX90

PRODUCTION DTRS 75 HERDS 33 | Dec 2019 | SOURCE COM

| Milk Kgs | Fat Kgs | Prot Kgs | £SCI | PLI £-174 |
|----------|---------|----------|------|-----------|
| -141 | -11.3 | -9.8 | -228 | |
| Rel% | Fat% | Prot% | £ACI | £PLI Rel% |
| 94 | -0.07 | -0.07 | -187 | 89 |

| | -2 | -1 | 0 | 1 | 2 | |
|------------------|----|----|---|---|---|----------------|
| UK Type Merit | | | | | | 3.29 Excellent |
| UK Udder Comp | | | | | | 2.73 Excellent |
| UK Feet and Legs | | | | | | 1.55 Excellent |
| Stature | | | | | | 1.31 Taller |
| Chest Width | | | | | | 0.93 Wide |
| Body Depth | | | | | | 0.93 Deep |
| Angularity | | | | | | 0.74 Open Rib |
| Rump Angle | | | | | | 0.03 Lower |
| Rump Width | | | | | | 3.21 Wide |
| Rear Leg Side | | | | | | 0.12 Sickled |
| Foot Angle | | | | | | 0.16 Steep |
| F.Udder Attach | | | | | | 3.88 Tight |
| R. Udder Height | | | | | | 3.27 Very High |
| Udder Support | | | | | | 2.04 Strong |
| Udder Depth | | | | | | 2.78 Shallow |
| F.Teat Placement | | | | | | 1.94 Close |
| Teat Length | | | | | | -1.66 Shorter |
| R.Teat Placement | | | | | | 1.89 Close |
| Teat Pos Side | | | | | | -0.01 Close |
| Locomotion | | | | | | 1.17 Excellent |

Source COM | Daughters in Herds | 56 Dtrs 30 Herds 87% Rel

| | | | | | |
|---------------------|------|----------|-----------------|---------|----------|
| Fertility Index | -5.2 | Non Imp | Condition Score | 0.03 | High |
| Lifespan | 106 | Improver | Maintenance | 17 | High |
| Direct Calving Ease | -1.7 | Harder | Calf Survival | 2.8 | Improver |
| SCC | 1 | Average | Dairy Carcase | -1.4 | Non Imp |
| Mastitis | 0.0 | Average | Milking Speed | 0.61 | Improver |
| TB Advantage | 0.2 | Average | Temperament | 0.12 | Average |
| Lameness Adv | -2.3 | Non Imp | B/K Casein | A1A1/AE | |

Type Data supplied by Holstein UK
 Production and Fitness data supplied by AHDB Dairy



EDG Delta-**B52**

Delta x BOB x Numero Uno



3RD DAM LARCREST CRIMSON-ET EX94 4E

HBN: HOL840003126776429 AI Code: H05144
 Dam: Edg Cp Bob 57351 ET VG85
 2nd Dam: Larcrest Centerpiece ET VG86
 3rd Dam: Larcrest Crimson ET EX94 4E

PRODUCTION DTRS 0 HERDS 0 | Dec 2019 | SOURCE GBR

| Milk Kgs | Fat Kgs | Prot Kgs | £SCI | PLI £649 |
|----------|---------|----------|------|-----------|
| 442 | 35.5 | 20.4 | 345 | |
| Rel% | Fat% | Prot% | £ACI | £PLI Rel% |
| 68 | 0.22 | 0.07 | 527 | 65 |

| | -2 | -1 | 0 | 1 | 2 | |
|------------------|----|----|---|---|---|----------------|
| UK Type Merit | | | | | | 2.77 Excellent |
| UK Udder Comp | | | | | | 2.04 Excellent |
| UK Feet and Legs | | | | | | 1.56 Excellent |
| Stature | | | | | | 1.22 Taller |
| Chest Width | | | | | | -0.12 Narrow |
| Body Depth | | | | | | -0.4 Average |
| Angularity | | | | | | 1.34 Open Rib |
| Rump Angle | | | | | | 0.41 Lower |
| Rump Width | | | | | | 1.64 Wide |
| Rear Leg Side | | | | | | -0.18 Straight |
| Foot Angle | | | | | | 1.02 Steep |
| F.Udder Attach | | | | | | 1.87 Tight |
| R. Udder Height | | | | | | 2.15 Very High |
| Udder Support | | | | | | 0.98 Strong |
| Udder Depth | | | | | | 1.71 Shallow |
| F.Teat Placement | | | | | | 1.31 Close |
| Teat Length | | | | | | -1.12 Shorter |
| R.Teat Placement | | | | | | 1.24 Close |
| Teat Pos Side | | | | | | 0.69 Apart |
| Locomotion | | | | | | 1.72 Excellent |

Daughters in Herds | 0 Dtrs 0 Herds 56% Rel

| | | | | | |
|---------------------|------|----------|-----------------|---------|-----------|
| Fertility Index | 10.3 | Improver | Condition Score | -0.84 | Low |
| Lifespan | 158 | Improver | Maintenance | 7 | High |
| Direct Calving Ease | -1.0 | Harder | Calf Survival | -1.1 | Non Imp |
| SCC | -20 | Improver | Dairy Carcase | 1.3 | Improver |
| Mastitis | -3.0 | Improver | Milking Speed | 0.53 | Improver |
| TB Advantage | 0.8 | Improver | Temperament | 0.70 | Excellent |
| Lameness Adv | 1.0 | Improver | B/K Casein | A2A2/BB | |

Type Data supplied by Holstein UK
 Production and Fitness data supplied by AHDB Dairy



De Oosterhof **BATTLE**

Battlecry x Platinum x Snowman



HBN: HOLNLD000711611328 AI Code: H04615
 Dam: Roccafarm Brelatine ET
 2nd Dam: Rocca-DG Snowman Breezer VG86
 3rd Dam: Ven Dairy Mac Breesch ET VG87

PRODUCTION DTRS 0 HERDS 0 | Dec 2019 | SOURCE GBR

| Milk Kgs | Fat Kgs | Prot Kgs | £SCI | PLI £667 |
|----------|---------|----------|------|-----------|
| 662 | 29.4 | 24.7 | 340 | |
| Rel% | Fat% | Prot% | £ACI | £PLI Rel% |
| 69 | 0.04 | 0.04 | 534 | 66 |

| | -2 | -1 | 0 | 1 | 2 | |
|------------------|----|----|---|---|---|----------------|
| UK Type Merit | | | | | | 1.17 Excellent |
| UK Udder Comp | | | | | | 1.03 Excellent |
| UK Feet and Legs | | | | | | 0.54 Excellent |
| Stature | | | | | | 0.45 Taller |
| Chest Width | | | | | | 0.19 Wide |
| Body Depth | | | | | | -0.1 Average |
| Angularity | | | | | | 0.24 Open Rib |
| Rump Angle | | | | | | -0.3 Higher |
| Rump Width | | | | | | 0.53 Wide |
| Rear Leg Side | | | | | | 0.06 Sickled |
| Foot Angle | | | | | | 0.55 Steep |
| F.Udder Attach | | | | | | 0.34 Tight |
| R. Udder Height | | | | | | 1.04 Very High |
| Udder Support | | | | | | 0.77 Strong |
| Udder Depth | | | | | | 0.8 Shallow |
| F.Teat Placement | | | | | | 0.77 Close |
| Teat Length | | | | | | 0.2 Longer |
| R.Teat Placement | | | | | | 0.41 Close |
| Teat Pos Side | | | | | | 0.04 Apart |
| Locomotion | | | | | | 0.65 Excellent |

Daughters in Herds | 0 Dtrs 0 Herds 58% Rel

| | | | | | |
|---------------------|------|----------|-----------------|---------|----------|
| Fertility Index | 5.7 | Improver | Condition Score | 0.15 | High |
| Lifespan | 125 | Improver | Maintenance | 5 | High |
| Direct Calving Ease | -0.2 | Average | Calf Survival | 3.7 | Improver |
| SCC | -31 | Improver | Dairy Carcase | -0.9 | Non Imp |
| Mastitis | -4.0 | Improver | Milking Speed | -0.49 | Average |
| TB Advantage | 0.1 | Average | Temperament | -0.44 | Average |
| Lameness Adv | 1.0 | Improver | B/K Casein | A2A2/AA | |

Type Data supplied by Holstein UK
 Production and Fitness data supplied by AHDB Dairy



Crossfell **BLIZZARD**

Mayday x Rubicon x Supersire



FULL SISTER TO DAM CROSSFELL RUBICON CAMILLA VG85

HBN: HOLGBR103122303092 AI Code: H05613
 Dam: Crossfell Rubicon Camille ET VG85
 2nd Dam: Zandenburg Super Camilla VG85
 3rd Dam: Zandenburg Snowman Camilla ET VG89

PRODUCTION DTRS 0 HERDS 0 | Dec 2019 | SOURCE GBR

| Milk Kgs | Fat Kgs | Prot Kgs | £SCI | PLI £664 |
|----------|---------|----------|------|-----------|
| 340 | 26.3 | 21.5 | 377 | |
| Rel% | Fat% | Prot% | £ACI | £PLI Rel% |
| 66 | 0.16 | 0.13 | 559 | 63 |

| | -2 | -1 | 0 | 1 | 2 | |
|------------------|----|----|---|---|---|----------------|
| UK Type Merit | | | | | | 1.81 Excellent |
| UK Udder Comp | | | | | | 1.54 Excellent |
| UK Feet and Legs | | | | | | 0.89 Excellent |
| Stature | | | | | | 0.71 Taller |
| Chest Width | | | | | | -0.25 Narrow |
| Body Depth | | | | | | -0.51 Shallow |
| Angularity | | | | | | 0.69 Open Rib |
| Rump Angle | | | | | | 0.27 Lower |
| Rump Width | | | | | | 0.2 Wide |
| Rear Leg Side | | | | | | 0.88 Sickled |
| Foot Angle | | | | | | -0.6 Low |
| F.Udder Attach | | | | | | 1.2 Tight |
| R. Udder Height | | | | | | 1.37 Very High |
| Udder Support | | | | | | 1.3 Strong |
| Udder Depth | | | | | | 1.71 Shallow |
| F.Teat Placement | | | | | | 1.05 Close |
| Teat Length | | | | | | 0.44 Longer |
| R.Teat Placement | | | | | | 0.8 Close |
| Teat Pos Side | | | | | | 0.24 Apart |
| Locomotion | | | | | | 1.11 Excellent |

Daughters in Herds | 0 Dtrs 0 Herds 53% Rel

| | | | | | |
|---------------------|------|----------|-----------------|---------|----------|
| Fertility Index | 9.2 | Improver | Condition Score | -0.36 | Low |
| Lifespan | 155 | Improver | Maintenance | 3 | High |
| Direct Calving Ease | -1.1 | Harder | Calf Survival | 1.1 | Improver |
| SCC | -29 | Improver | Dairy Carcase | 0.5 | Improver |
| Mastitis | -3.0 | Improver | Milking Speed | 0.51 | Improver |
| TB Advantage | 0.3 | Average | Temperament | 0.26 | Average |
| Lameness Adv | 1.5 | Improver | B/K Casein | A1A2/BB | |

Type Data supplied by Holstein UK
 Production and Fitness data supplied by AHDB Dairy



Hul-Stein BREEZER

Achiever x Octoberfest x Supersire



6TH DAM REGANCREST PR BARBIE EX92

HBN: HOLNLD000699058814 AI Code: H05674
Dam: Hul-Stein October Breesch 2 VG87 2yr
2nd Dam: Peak Breeshia SS 8310
3rd Dam: Vendairy Breeshia

PRODUCTION DTRS 0 HERDS 0 | Dec 2019 | SOURCE GBR

| | | | | |
|----------|---------|----------|------|-----------------|
| Milk Kgs | Fat Kgs | Prot Kgs | £SCI | PLI £703 |
| 642 | 41.2 | 21.3 | 378 | |
| Rel% | Fat% | Prot% | £ACI | £PLI Rel% |
| 66 | 0.19 | 0.01 | 568 | 63 |

| | | |
|------------------|-------|-----------|
| UK Type Merit | 1.85 | Excellent |
| UK Udder Comp | 1.52 | Excellent |
| UK Feet and Legs | 1.47 | Excellent |
| Stature | -0.03 | Average |
| Chest Width | 0.03 | Wide |
| Body Depth | -0.88 | Shallow |
| Angularity | 0.1 | Open Rib |
| Rump Angle | 0.33 | Lower |
| Rump Width | 0.34 | Wide |
| Rear Leg Side | -0.36 | Straight |
| Foot Angle | 0.02 | Steep |
| F.Udder Attach | 1.45 | Tight |
| R. Udder Height | 1.94 | Very High |
| Udder Support | 1.13 | Strong |
| Udder Depth | 0.85 | Shallow |
| F.Teat Placement | 1.17 | Close |
| Teat Length | 0.1 | Longer |
| R.Teat Placement | 1.01 | Close |
| Teat Pos Side | 0.2 | Apart |
| Locomotion | 1.64 | Excellent |

Daughters in Herds | 0 Dtrs 0 Herds 53% Rel

| | | | | | |
|---------------------|------|----------|-----------------|---------|----------|
| Fertility Index | 8.8 | Improver | Condition Score | 0.15 | High |
| Lifespan | 152 | Improver | Maintenance | -1 | Low |
| Direct Calving Ease | 0.1 | Average | Calf Survival | 0.5 | Improver |
| SCC | -20 | Improver | Dairy Carcase | 1.2 | Improver |
| Mastitis | -3.0 | Improver | Milking Speed | 0.08 | Average |
| TB Advantage | 1.1 | Improver | Temperament | 0.28 | Average |
| Lameness Adv | 1.0 | Improver | B/K Casein | A1A2/AB | |

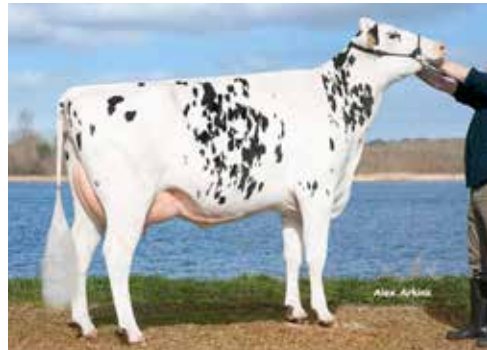
Type Data supplied by Holstein UK

Production and Fitness data supplied by AHDB Dairy



Neerduist CAMILO

Casper x Charley x Mardi Gras



3RD DAM NEERDUIST EPIC CINDY VG86

HBN: HOLNLD000699063539 AI Code: H06002
Dam: Neerduist DG Charli
2nd Dam: Neerduist DG Cilla GP83
3rd Dam: Neerduist Epic Cindy VG86

PRODUCTION DTRS 0 HERDS 0 | Dec 2019 | SOURCE GBR

| | | | | |
|----------|---------|----------|------|-----------------|
| Milk Kgs | Fat Kgs | Prot Kgs | £SCI | PLI £783 |
| 669 | 39 | 29.9 | 417 | |
| Rel% | Fat% | Prot% | £ACI | £PLI Rel% |
| 67 | 0.15 | 0.1 | 624 | 63 |

| | | |
|------------------|-------|-----------|
| UK Type Merit | 2.53 | Excellent |
| UK Udder Comp | 2.01 | Excellent |
| UK Feet and Legs | 1.13 | Excellent |
| Stature | 0.39 | Taller |
| Chest Width | 0.37 | Wide |
| Body Depth | 0.14 | Average |
| Angularity | 1 | Open Rib |
| Rump Angle | -0.93 | Higher |
| Rump Width | 1.37 | Wide |
| Rear Leg Side | 0.14 | Sickled |
| Foot Angle | 0.14 | Steep |
| F.Udder Attach | 1.85 | Tight |
| R. Udder Height | 2.29 | Very High |
| Udder Support | 1.5 | Strong |
| Udder Depth | 1.03 | Shallow |
| F.Teat Placement | 1.77 | Close |
| Teat Length | -1.52 | Shorter |
| R.Teat Placement | 0.92 | Close |
| Teat Pos Side | 0.37 | Apart |
| Locomotion | 1.33 | Excellent |

Daughters in Herds | 0 Dtrs 0 Herds 53% Rel

| | | | | | |
|---------------------|------|----------|-----------------|---------|-----------|
| Fertility Index | 8.2 | Improver | Condition Score | 0.22 | High |
| Lifespan | 167 | Improver | Maintenance | 4 | High |
| Direct Calving Ease | 0.3 | Easy | Calf Survival | -0.4 | Non Imp |
| SCC | -19 | Improver | Dairy Carcase | -0.4 | Non Imp |
| Mastitis | -2.0 | Improver | Milking Speed | 0.84 | Improver |
| TB Advantage | 0.2 | Average | Temperament | 0.53 | Excellent |
| Lameness Adv | 2.7 | Improver | B/K Casein | A1A2/BE | |

Type Data supplied by Holstein UK

Production and Fitness data supplied by AHDB Dairy



Hurtgenlea Richard CHARL

Charley x Yoder x Supersire



HBN: HOLUSA000074345956 AI Code: H05648
Dam: Hurtgenlea Yoder Modesto ET VG86
2nd Dam: Hurtgenlea Supersire Malibu ET VG87
3rd Dam: Hurtgenlea Rusel Malvina ET EX90

PRODUCTION DTRS 0 HERDS 0 | Dec 2019 | SOURCE GBR

| | | | | |
|----------|---------|----------|------|-----------------|
| Milk Kgs | Fat Kgs | Prot Kgs | £SCI | PLI £708 |
| 1056 | 36.4 | 27.8 | 337 | |
| Rel% | Fat% | Prot% | £ACI | £PLI Rel% |
| 68 | -0.06 | -0.07 | 547 | 64 |

| | | |
|------------------|-------|-----------|
| UK Type Merit | 1.84 | Excellent |
| UK Udder Comp | 1.42 | Excellent |
| UK Feet and Legs | 1.29 | Excellent |
| Stature | -0.07 | Average |
| Chest Width | -1.08 | Narrow |
| Body Depth | -0.97 | Shallow |
| Angularity | 1.01 | Open Rib |
| Rump Angle | 0.45 | Lower |
| Rump Width | 0.02 | Wide |
| Rear Leg Side | 0.22 | Sickled |
| Foot Angle | -0.72 | Low |
| F.Udder Attach | 1.38 | Tight |
| R. Udder Height | 1.49 | Very High |
| Udder Support | 0 | Broken |
| Udder Depth | 1.01 | Shallow |
| F.Teat Placement | 0.55 | Close |
| Teat Length | -1.36 | Shorter |
| R.Teat Placement | 0.17 | Close |
| Teat Pos Side | 0.71 | Apart |
| Locomotion | 1.65 | Excellent |

Daughters in Herds | 0 Dtrs 0 Herds 55% Rel

| | | | | | |
|---------------------|------|----------|-----------------|---------|-----------|
| Fertility Index | 9.2 | Improver | Condition Score | -1.13 | Low |
| Lifespan | 155 | Improver | Maintenance | -11 | Low |
| Direct Calving Ease | 0.4 | Easy | Calf Survival | 0.8 | Improver |
| SCC | -17 | Improver | Dairy Carcase | 0.9 | Improver |
| Mastitis | -1.0 | Average | Milking Speed | 1.19 | Improver |
| TB Advantage | 1.0 | Improver | Temperament | 0.77 | Excellent |
| Lameness Adv | 2.9 | Improver | B/K Casein | A2A2/AB | |

Type Data supplied by Holstein UK

Production and Fitness data supplied by AHDB Dairy



Stantons CHIEF

High Octane x Numero Uno x Observer



DAM ROCKYMOUNTAIN UNO CHEYANNE VG85

HBN: HOL840003129015989 AI Code: H04889
Dam: Rockymountain Uno Cheyanne VG85
2nd Dam: Larcrest Chevelle ET VG87
3rd Dam: Larcrest Cosmopolitan VG87

PRODUCTION DTRS 0 HERDS 0 | Dec 2019 | SOURCE GBR

| | | | | |
|----------|---------|----------|------|-----------------|
| Milk Kgs | Fat Kgs | Prot Kgs | £SCI | PLI £452 |
| 757 | 18.2 | 18.7 | 139 | |
| Rel% | Fat% | Prot% | £ACI | £PLI Rel% |
| 69 | -0.13 | -0.07 | 308 | 70 |

| | | |
|------------------|-------|-----------|
| UK Type Merit | 2.59 | Excellent |
| UK Udder Comp | 2.28 | Excellent |
| UK Feet and Legs | 1.23 | Excellent |
| Stature | 2.26 | Taller |
| Chest Width | 0.83 | Wide |
| Body Depth | 0.55 | Deep |
| Angularity | 0.27 | Open Rib |
| Rump Angle | 0.45 | Lower |
| Rump Width | 1.75 | Wide |
| Rear Leg Side | -0.52 | Straight |
| Foot Angle | 1.34 | Steep |
| F.Udder Attach | 2.73 | Tight |
| R. Udder Height | 3.02 | Very High |
| Udder Support | 0.88 | Strong |
| Udder Depth | 3.09 | Shallow |
| F.Teat Placement | 0.4 | Close |
| Teat Length | -0.59 | Shorter |
| R.Teat Placement | 0.64 | Close |
| Teat Pos Side | 1.18 | Apart |
| Locomotion | 1.03 | Excellent |

Daughters in Herds | 0 Dtrs 0 Herds 68% Rel

| | | | | | |
|---------------------|------|----------|-----------------|---------|----------|
| Fertility Index | 4.6 | Improver | Condition Score | 0.15 | High |
| Lifespan | 143 | Improver | Maintenance | 26 | High |
| Direct Calving Ease | -1.1 | Harder | Calf Survival | 3.3 | Improver |
| SCC | -27 | Improver | Dairy Carcase | -0.2 | Non Imp |
| Mastitis | -3.0 | Improver | Milking Speed | 0.81 | Improver |
| TB Advantage | 2.9 | Improver | Temperament | 0.13 | Average |
| Lameness Adv | 1.5 | Improver | B/K Casein | A2A2/AA | |

Type Data supplied by Holstein UK

Production and Fitness data supplied by AHDB Dairy

Utilising Cogent's Ultimate Breeding Strategy has led to significant financial gains for farmers like Trevor Lloyd.

By using this strategy, and supported by our world renowned genetics and our industry leading SexedULTRA 4M and coupled with our Precision and Beef, we believe that you can unlock the full profitability of your herd.

0.89 ppl
Additional income.



BE PROFITABLE.
BE COGENT



Delicious DW **CONFIDE ET**
Delta-Worth x Nominee x Robust



HBN: HOL840003146616401 AI Code: HO5944
Dam: Ms Delicious Nom 60028 ET
2nd Dam: Miss Ood Robst Delicious ET VG87
3rd Dam: OCD Planet Danica-ET EX93 2E

| PRODUCTION DTRS 0 HERDS 0 Dec 2019 SOURCE GBR | | | | |
|---|---------|----------|------|-----------|
| Milk Kgs | Fat Kgs | Prot Kgs | £SCI | PLI £764 |
| 949 | 40.5 | 31.1 | 387 | |
| Rel% | Fat% | Prot% | £ACI | £PLI Rel% |
| 67 | 0.04 | 0 | 614 | 63 |

| | -2 | -1 | 0 | 1 | 2 | |
|------------------|----|----|---|---|---|----------------|
| UK Type Merit | | | | | | 1.41 Excellent |
| UK Udder Comp | | | | | | 0.97 Excellent |
| UK Feet and Legs | | | | | | 0.63 Excellent |
| Stature | | | | | | 0.39 Taller |
| Chest Width | | | | | | 0.09 Wide |
| Body Depth | | | | | | -0.17 Average |
| Angularity | | | | | | 0.92 Open Rib |
| Rump Angle | | | | | | -0.14 Higher |
| Rump Width | | | | | | 1 Wide |
| Rear Leg Side | | | | | | 0.93 Sickled |
| Foot Angle | | | | | | -0.63 Low |
| F.Udder Attach | | | | | | 0.63 Tight |
| R. Udder Height | | | | | | 0.94 Very High |
| Udder Support | | | | | | 1.33 Strong |
| Udder Depth | | | | | | 0.58 Shallow |
| F.Teat Placement | | | | | | 1.01 Close |
| Teat Length | | | | | | -0.43 Shorter |
| R.Teat Placement | | | | | | 1.11 Close |
| Teat Pos Side | | | | | | 0.11 Apart |
| Locomotion | | | | | | 0.88 Excellent |

| Daughters in Herds 0 Dtrs 0 Herds 53% Rel | | | | |
|---|------|----------|-----------------|----------------|
| Fertility Index | 10.4 | Improver | Condition Score | -0.49 Low |
| Lifespan | 167 | Improver | Maintenance | 2 High |
| Direct Calving Ease | -0.9 | Harder | Calf Survival | 1.6 Improver |
| SCC | -19 | Improver | Dairy Carcase | 1.1 Improver |
| Mastitis | -2.0 | Improver | Milking Speed | 0.18 Average |
| TB Advantage | 0.7 | Improver | Temperament | 0.83 Excellent |
| Lameness Adv | 1.2 | Improver | B/K Casein | A2A2/AB |

Type Data supplied by Holstein UK
Production and Fitness data supplied by AHDB Dairy



SJK **CORONA**
Montana x Supershot x Mogul



HBN: HOLNLD000686845753 AI Code: HO5492
Dam: Larcrest RR Cale
2nd Dam: BB Mogul Cleopatra ET VG87
3rd Dam: Larcrest Cale ET VG89

| PRODUCTION DTRS 0 HERDS 0 Dec 2019 SOURCE GBR | | | | |
|---|---------|----------|------|-----------|
| Milk Kgs | Fat Kgs | Prot Kgs | £SCI | PLI £714 |
| 857 | 29.5 | 28.1 | 365 | |
| Rel% | Fat% | Prot% | £ACI | £PLI Rel% |
| 68 | -0.05 | 0 | 561 | 64 |

| | -2 | -1 | 0 | 1 | 2 | |
|------------------|----|----|---|---|---|----------------|
| UK Type Merit | | | | | | 1.93 Excellent |
| UK Udder Comp | | | | | | 1.89 Excellent |
| UK Feet and Legs | | | | | | 1.16 Excellent |
| Stature | | | | | | -0.18 Average |
| Chest Width | | | | | | 0.34 Wide |
| Body Depth | | | | | | -1.01 Shallow |
| Angularity | | | | | | -0.29 Coarse |
| Rump Angle | | | | | | 0.74 Lower |
| Rump Width | | | | | | 0.38 Wide |
| Rear Leg Side | | | | | | -0.95 Straight |
| Foot Angle | | | | | | 0.55 Steep |
| F.Udder Attach | | | | | | 1.83 Tight |
| R. Udder Height | | | | | | 1.62 Very High |
| Udder Support | | | | | | 1.05 Strong |
| Udder Depth | | | | | | 1.44 Shallow |
| F.Teat Placement | | | | | | 1.03 Close |
| Teat Length | | | | | | -0.84 Shorter |
| R.Teat Placement | | | | | | 1.2 Close |
| Teat Pos Side | | | | | | 1.4 Apart |
| Locomotion | | | | | | 1.3 Excellent |

| Daughters in Herds 0 Dtrs 0 Herds 56% Rel | | | | |
|---|------|----------|-----------------|----------------|
| Fertility Index | 9.4 | Improver | Condition Score | 0.84 High |
| Lifespan | 167 | Improver | Maintenance | 1 High |
| Direct Calving Ease | -0.6 | Harder | Calf Survival | 0.8 Improver |
| SCC | -22 | Improver | Dairy Carcase | 1.9 Improver |
| Mastitis | -2.0 | Improver | Milking Speed | 1.07 Improver |
| TB Advantage | 1.4 | Improver | Temperament | 0.75 Excellent |
| Lameness Adv | 2.0 | Improver | B/K Casein | A2A2/AB |

Type Data supplied by Holstein UK
Production and Fitness data supplied by AHDB Dairy



Blondin J **CROWN ROYAL**
Jacobus x Numero Uno x Damion



MGD SILVERMAPLE DAMION CAMOMILE EX95

HBN: HOLCAN000110296877 AI Code: HO5730
Dam: Butlerview Uno Card-ET VG88 2yr
2nd Dam: Silvermaple Damion Camomile EX95
3rd Dam: Stanhope Camila Goldwyn EX90

| PRODUCTION DTRS 0 HERDS 0 Dec 2019 SOURCE GBR | | | | |
|---|---------|----------|------|-----------|
| Milk Kgs | Fat Kgs | Prot Kgs | £SCI | PLI £222 |
| 268 | 16.1 | 8.6 | 14 | |
| Rel% | Fat% | Prot% | £ACI | £PLI Rel% |
| 68 | 0.07 | 0 | 114 | 65 |

| | -2 | -1 | 0 | 1 | 2 | |
|------------------|----|----|---|---|---|----------------|
| UK Type Merit | | | | | | 3.71 Excellent |
| UK Udder Comp | | | | | | 2.88 Excellent |
| UK Feet and Legs | | | | | | 1.48 Excellent |
| Stature | | | | | | 3.43 Taller |
| Chest Width | | | | | | 1.84 Wide |
| Body Depth | | | | | | 1.72 Deep |
| Angularity | | | | | | 1.11 Open Rib |
| Rump Angle | | | | | | -0.41 Higher |
| Rump Width | | | | | | 2.66 Wide |
| Rear Leg Side | | | | | | -0.53 Straight |
| Foot Angle | | | | | | 1.1 Steep |
| F.Udder Attach | | | | | | 3.06 Tight |
| R. Udder Height | | | | | | 2.75 Very High |
| Udder Support | | | | | | 2.59 Strong |
| Udder Depth | | | | | | 2.33 Shallow |
| F.Teat Placement | | | | | | 2.04 Close |
| Teat Length | | | | | | 0.39 Longer |
| R.Teat Placement | | | | | | 1.84 Close |
| Teat Pos Side | | | | | | 0.53 Apart |
| Locomotion | | | | | | 1.78 Excellent |

| Daughters in Herds 0 Dtrs 0 Herds 56% Rel | | | | |
|---|------|----------|-----------------|---------------|
| Fertility Index | 3.6 | Improver | Condition Score | 0.56 High |
| Lifespan | 67 | Improver | Maintenance | 42 High |
| Direct Calving Ease | -2.9 | Harder | Calf Survival | -0.9 Non Imp |
| SCC | -20 | Improver | Dairy Carcase | -0.7 Non Imp |
| Mastitis | -2.0 | Improver | Milking Speed | 0.63 Improver |
| TB Advantage | 1.2 | Improver | Temperament | 0.39 Average |
| Lameness Adv | 1.0 | Improver | B/K Casein | A2A2/AA |

Type Data supplied by Holstein UK
Production and Fitness data supplied by AHDB Dairy



Col Dg **CRUSHTIME** HH5C
Crush x Mogul x Meridian



HBN: HOLDEU000539782028 AI Code: H05465
Dam: Oh-River-Syc Mogal Brylan VG87
2nd Dam: Oh-River-Syc Mrdn Billie ET TL TD EX91
3rd Dam: Sandy-Valley Atwd Barbie-ET EX91

| PRODUCTION DTRS 0 HERDS 0 Dec 2019 SOURCE GBR | | | | |
|---|---------|----------|------|-----------|
| Milk Kgs | Fat Kgs | Prot Kgs | £SCI | PLI £175 |
| 533 | 6.5 | 15.9 | -58 | |
| Rel% | Fat% | Prot% | £ACI | £PLI Rel% |
| 68 | -0.17 | -0.02 | 40 | 65 |

| | -2 | -1 | 0 | 1 | 2 | | |
|------------------|-------|----|---|---|---|-------|-----------|
| UK Type Merit | [Bar] | | | | | 3.99 | Excellent |
| UK Udder Comp | [Bar] | | | | | 2.96 | Excellent |
| UK Feet and Legs | [Bar] | | | | | 1.85 | Excellent |
| Stature | [Bar] | | | | | 3.29 | Taller |
| Chest Width | [Bar] | | | | | 0.32 | Wide |
| Body Depth | [Bar] | | | | | 1.65 | Deep |
| Angularity | [Bar] | | | | | 2.05 | Open Rib |
| Rump Angle | [Bar] | | | | | -0.04 | Higher |
| Rump Width | [Bar] | | | | | 2.15 | Wide |
| Rear Leg Side | [Bar] | | | | | 0.56 | Sickled |
| Foot Angle | [Bar] | | | | | 0.84 | Steep |
| F.Udder Attach | [Bar] | | | | | 3.3 | Tight |
| R. Udder Height | [Bar] | | | | | 2.87 | Very High |
| Udder Support | [Bar] | | | | | 2.25 | Strong |
| Udder Depth | [Bar] | | | | | 2.75 | Shallow |
| F.Teat Placement | [Bar] | | | | | 1.36 | Close |
| Teat Length | [Bar] | | | | | -0.18 | Shorter |
| R.Teat Placement | [Bar] | | | | | 0.82 | Close |
| Teat Pos Side | [Bar] | | | | | 0.68 | Apart |
| Locomotion | [Bar] | | | | | 1.95 | Excellent |

| Daughters in Herds 0 Dtrs 0 Herds 56% Rel | | | | |
|---|------|----------|-----------------|----------------|
| Fertility Index | -0.8 | Non Imp | Condition Score | -0.97 Low |
| Lifespan | -6 | Non Imp | Maintenance | 28 High |
| Direct Calving Ease | -0.9 | Harder | Calf Survival | 0.4 Improver |
| SCC | -12 | Improver | Dairy Carcase | -0.1 Average |
| Mastitis | -1.0 | Average | Milking Speed | 0.54 Improver |
| TB Advantage | 0.6 | Improver | Temperament | 0.61 Excellent |
| Lameness Adv | 1.2 | Improver | B/K Casein | A1A2/BE |

Type Data supplied by Holstein UK
Production and Fitness data supplied by AHDB Dairy



Boghill Glamour **CURSOR** HH5C
Curry x Supershot x Numero Uno



HBN: HOLGBR949027111467 AI Code: H05628
Dam: Boghill Glamour Supershot Carlin ET GP81
2nd Dam: Glamour Carlin ET VG88
3rd Dam: Larcrest Carlin ET VG87

| PRODUCTION DTRS 0 HERDS 0 Dec 2019 SOURCE GBR | | | | |
|---|---------|----------|------|-----------|
| Milk Kgs | Fat Kgs | Prot Kgs | £SCI | PLI £795 |
| 974 | 34.3 | 33.2 | 418 | |
| Rel% | Fat% | Prot% | £ACI | £PLI Rel% |
| 67 | -0.05 | 0.02 | 642 | 64 |

| | -2 | -1 | 0 | 1 | 2 | | |
|------------------|-------|----|---|---|---|-------|-----------|
| UK Type Merit | [Bar] | | | | | 0.89 | Excellent |
| UK Udder Comp | [Bar] | | | | | 0.71 | Excellent |
| UK Feet and Legs | [Bar] | | | | | 0.36 | Excellent |
| Stature | [Bar] | | | | | 0.02 | Average |
| Chest Width | [Bar] | | | | | 0.61 | Wide |
| Body Depth | [Bar] | | | | | 0.03 | Average |
| Angularity | [Bar] | | | | | 0.14 | Open Rib |
| Rump Angle | [Bar] | | | | | 0.51 | Lower |
| Rump Width | [Bar] | | | | | 0.02 | Wide |
| Rear Leg Side | [Bar] | | | | | -0.08 | Straight |
| Foot Angle | [Bar] | | | | | -0.34 | Low |
| F.Udder Attach | [Bar] | | | | | 0.32 | Tight |
| R. Udder Height | [Bar] | | | | | 0.8 | Very High |
| Udder Support | [Bar] | | | | | 0.5 | Strong |
| Udder Depth | [Bar] | | | | | -0.08 | Deep |
| F.Teat Placement | [Bar] | | | | | -0.51 | Outside |
| Teat Length | [Bar] | | | | | 2.43 | Longer |
| R.Teat Placement | [Bar] | | | | | -0.38 | Apart |
| Teat Pos Side | [Bar] | | | | | 0.22 | Apart |
| Locomotion | [Bar] | | | | | 0.4 | Excellent |

| Daughters in Herds 0 Dtrs 0 Herds 54% Rel | | | | |
|---|------|----------|-----------------|----------------|
| Fertility Index | 10.3 | Improver | Condition Score | 0.73 High |
| Lifespan | 179 | Improver | Maintenance | 4 High |
| Direct Calving Ease | 0.0 | Average | Calf Survival | 1.8 Improver |
| SCC | -25 | Improver | Dairy Carcase | 1.3 Improver |
| Mastitis | -2.0 | Improver | Milking Speed | -0.31 Average |
| TB Advantage | 1.2 | Improver | Temperament | 0.99 Excellent |
| Lameness Adv | 2.0 | Improver | B/K Casein | A2A2/AB |

Type Data supplied by Holstein UK
Production and Fitness data supplied by AHDB Dairy



Edg Bob **CYPRUS** 15120
BOB x Numero Uno x Ramos



DTR FARNEAR JAYLYNN CY 32806 VG85

HBN: HOL840003012574967 AI Code: H04630
Dam: Larcrest Centerpiece ET VG86
2nd Dam: Larcrest Crimson ET EX94 4E
3rd Dam: Larcrest Cosmopolitan VG87

| PRODUCTION DTRS 325 HERDS 101 Dec 2019 SOURCE ITB | | | | |
|---|---------|----------|------|-----------|
| Milk Kgs | Fat Kgs | Prot Kgs | £SCI | PLI £601 |
| 618 | 34.9 | 23.9 | 285 | |
| Rel% | Fat% | Prot% | £ACI | £PLI Rel% |
| 83 | 0.12 | 0.05 | 461 | 79 |

| | -2 | -1 | 0 | 1 | 2 | | |
|------------------|-------|----|---|---|---|-------|-----------|
| UK Type Merit | [Bar] | | | | | 2.79 | Excellent |
| UK Udder Comp | [Bar] | | | | | 1.99 | Excellent |
| UK Feet and Legs | [Bar] | | | | | 0.83 | Excellent |
| Stature | [Bar] | | | | | 2.26 | Taller |
| Chest Width | [Bar] | | | | | 1.66 | Wide |
| Body Depth | [Bar] | | | | | 1.37 | Deep |
| Angularity | [Bar] | | | | | 1.33 | Open Rib |
| Rump Angle | [Bar] | | | | | 1.11 | Lower |
| Rump Width | [Bar] | | | | | 3.04 | Wide |
| Rear Leg Side | [Bar] | | | | | 0.78 | Sickled |
| Foot Angle | [Bar] | | | | | 0.8 | Steep |
| F.Udder Attach | [Bar] | | | | | 1.29 | Tight |
| R. Udder Height | [Bar] | | | | | 2.14 | Very High |
| Udder Support | [Bar] | | | | | 2.72 | Strong |
| Udder Depth | [Bar] | | | | | 0.87 | Shallow |
| F.Teat Placement | [Bar] | | | | | 2.59 | Close |
| Teat Length | [Bar] | | | | | -0.85 | Shorter |
| R.Teat Placement | [Bar] | | | | | 2.8 | Close |
| Teat Pos Side | [Bar] | | | | | 0.74 | Apart |
| Locomotion | [Bar] | | | | | 1.05 | Excellent |

| Source ITB Daughters in Herds 138 Dtrs 44 Herds 74% Rel | | | | |
|---|------|----------|-----------------|---------------|
| Fertility Index | 10.4 | Improver | Condition Score | -0.04 Low |
| Lifespan | 82 | Improver | Maintenance | 29 High |
| Direct Calving Ease | -1.8 | Harder | Calf Survival | 0.8 Improver |
| SCC | -21 | Improver | Dairy Carcase | -0.3 Non Imp |
| Mastitis | -3.0 | Improver | Milking Speed | -0.28 Average |
| TB Advantage | 0.3 | Average | Temperament | 0.27 Average |
| Lameness Adv | 1.8 | Improver | B/K Casein | A1A2/BE |

Type Data supplied by Holstein UK
Production and Fitness data supplied by AHDB Dairy



Peak **DANGER**
Drago x Delta x Liquid Gold



DAM COYNE-FARMS FBOOK JAELA-ET VG85

HBN: HOL840003149336771 AI Code: H05946
Dam: Mercedes Delta 9619-ET
2nd Dam: T-Spruce Lgold 7871-ET GP83
3rd Dam: Coyne-Farms Fbook Jaela-ET VG85

| PRODUCTION DTRS 0 HERDS 0 Dec 2019 SOURCE GBR | | | | |
|---|---------|----------|------|-----------|
| Milk Kgs | Fat Kgs | Prot Kgs | £SCI | PLI £687 |
| 781 | 39.4 | 25 | 356 | |
| Rel% | Fat% | Prot% | £ACI | £PLI Rel% |
| 67 | 0.1 | 0 | 553 | 63 |

| | -2 | -1 | 0 | 1 | 2 | | |
|------------------|-------|----|---|---|---|-------|-----------|
| UK Type Merit | [Bar] | | | | | 2.01 | Excellent |
| UK Udder Comp | [Bar] | | | | | 1.58 | Excellent |
| UK Feet and Legs | [Bar] | | | | | 1.39 | Excellent |
| Stature | [Bar] | | | | | 0.29 | Taller |
| Chest Width | [Bar] | | | | | 0.18 | Wide |
| Body Depth | [Bar] | | | | | 0.27 | Average |
| Angularity | [Bar] | | | | | 0.38 | Open Rib |
| Rump Angle | [Bar] | | | | | 0.06 | Lower |
| Rump Width | [Bar] | | | | | 0.06 | Wide |
| Rear Leg Side | [Bar] | | | | | -0.09 | Straight |
| Foot Angle | [Bar] | | | | | 0.55 | Steep |
| F.Udder Attach | [Bar] | | | | | 1.7 | Tight |
| R. Udder Height | [Bar] | | | | | 1.48 | Very High |
| Udder Support | [Bar] | | | | | 1 | Strong |
| Udder Depth | [Bar] | | | | | 1.32 | Shallow |
| F.Teat Placement | [Bar] | | | | | 1.43 | Close |
| Teat Length | [Bar] | | | | | -0.62 | Shorter |
| R.Teat Placement | [Bar] | | | | | 1.1 | Close |
| Teat Pos Side | [Bar] | | | | | -0.04 | Close |
| Locomotion | [Bar] | | | | | 1.6 | Excellent |

| Daughters in Herds 0 Dtrs 0 Herds 53% Rel | | | | |
|---|------|----------|-----------------|---------------|
| Fertility Index | 11.3 | Improver | Condition Score | 0.34 High |
| Lifespan | 170 | Improver | Maintenance | 3 High |
| Direct Calving Ease | -0.4 | Harder | Calf Survival | 0.6 Improver |
| SCC | -3 | Improver | Dairy Carcase | 0.6 Improver |
| Mastitis | 0.0 | Average | Milking Speed | 1.17 Improver |
| TB Advantage | -0.9 | Non Imp | Temperament | 0.03 Average |
| Lameness Adv | 2.2 | Improver | B/K Casein | A1A2/BE |

Type Data supplied by Holstein UK
Production and Fitness data supplied by AHDB Dairy



TJR Duke DAWSON

Duke x Draco x Mogul



DAM TJR D-E DIAMOND 31630 GP84

HBN: HOL840003132353434 AI Code: H05814
 Dam: TJR DE-Diamond 31630-ET GP84
 2nd Dam: Tjr De-Diamond 2181-ET VG85
 3rd Dam: Morningview Super Deann VG85

| PRODUCTION DTRS 0 HERDS 0 Dec 2019 SOURCE GBR | | | | |
|---|---------|----------|------|-----------|
| Milk Kgs | Fat Kgs | Prot Kgs | £SCI | PLI £666 |
| 1425 | 36.4 | 39.9 | 218 | |
| Rel% | Fat% | Prot% | £ACI | £PLI Rel% |
| 67 | -0.21 | -0.07 | 448 | 64 |

| | -2 | -1 | 0 | 1 | 2 | | |
|------------------|-------|----|---|---|---|-------|-----------|
| UK Type Merit | [Bar] | | | | | 3.1 | Excellent |
| UK Udder Comp | [Bar] | | | | | 2.4 | Excellent |
| UK Feet and Legs | [Bar] | | | | | 0.47 | Excellent |
| Stature | [Bar] | | | | | 1.28 | Taller |
| Chest Width | [Bar] | | | | | 1.07 | Wide |
| Body Depth | [Bar] | | | | | 0.91 | Deep |
| Angularity | [Bar] | | | | | 1.95 | Open Rib |
| Rump Angle | [Bar] | | | | | 0.39 | Lower |
| Rump Width | [Bar] | | | | | 0.83 | Wide |
| Rear Leg Side | [Bar] | | | | | -0.03 | Straight |
| Foot Angle | [Bar] | | | | | 0.7 | Steep |
| F.Udder Attach | [Bar] | | | | | 2.57 | Tight |
| R. Udder Height | [Bar] | | | | | 3.06 | Very High |
| Udder Support | [Bar] | | | | | 0.93 | Strong |
| Udder Depth | [Bar] | | | | | 1.08 | Shallow |
| F.Teat Placement | [Bar] | | | | | 1.16 | Close |
| Teat Length | [Bar] | | | | | 0.35 | Longer |
| R.Teat Placement | [Bar] | | | | | 0.76 | Close |
| Teat Pos Side | [Bar] | | | | | 0.29 | Apart |
| Locomotion | [Bar] | | | | | 0.29 | Excellent |

| Daughters in Herds 0 Dtrs 0 Herds 55% Rel | | | | |
|---|------|----------|-----------------|----------------|
| Fertility Index | 4.2 | Improver | Condition Score | -0.65 Low |
| Lifespan | 143 | Improver | Maintenance | 15 High |
| Direct Calving Ease | -1.0 | Harder | Calf Survival | 0.3 Improver |
| SCC | -15 | Improver | Dairy Carcase | 1.1 Improver |
| Mastitis | -1.0 | Average | Milking Speed | -0.09 Average |
| TB Advantage | 0.8 | Improver | Temperament | 1.25 Excellent |
| Lameness Adv | 1.0 | Improver | B/K Casein | A2A2/AA |

Type Data supplied by Holstein UK
 Production and Fitness data supplied by AHDB Dairy



ALH DROGO

Pharo x Rubicon x Doorman



GDAM ALH DUBAI VG85

HBN: HOLNLD000697261845 AI Code: H06033
 Dam: ALH Dakar
 2nd Dam: ALH Dubai VG85
 3rd Dam: Riverdown V Snowman Delicate VG86

| PRODUCTION DTRS 0 HERDS 0 Dec 2019 SOURCE GBR | | | | |
|---|---------|----------|------|-----------|
| Milk Kgs | Fat Kgs | Prot Kgs | £SCI | PLI £535 |
| 823 | 31.3 | 26.5 | 166 | |
| Rel% | Fat% | Prot% | £ACI | £PLI Rel% |
| 67 | -0.01 | 0 | 351 | 64 |

| | -2 | -1 | 0 | 1 | 2 | | |
|------------------|-------|----|---|---|---|-------|-----------|
| UK Type Merit | [Bar] | | | | | 3.79 | Excellent |
| UK Udder Comp | [Bar] | | | | | 2.74 | Excellent |
| UK Feet and Legs | [Bar] | | | | | 1.47 | Excellent |
| Stature | [Bar] | | | | | 2.45 | Taller |
| Chest Width | [Bar] | | | | | 0.97 | Wide |
| Body Depth | [Bar] | | | | | 0.9 | Deep |
| Angularity | [Bar] | | | | | 2.03 | Open Rib |
| Rump Angle | [Bar] | | | | | -0.83 | Higher |
| Rump Width | [Bar] | | | | | 2.02 | Wide |
| Rear Leg Side | [Bar] | | | | | 0.66 | Sickled |
| Foot Angle | [Bar] | | | | | 0.6 | Steep |
| F.Udder Attach | [Bar] | | | | | 2.52 | Tight |
| R. Udder Height | [Bar] | | | | | 2.59 | Very High |
| Udder Support | [Bar] | | | | | 2.44 | Strong |
| Udder Depth | [Bar] | | | | | 2.38 | Shallow |
| F.Teat Placement | [Bar] | | | | | 1.7 | Close |
| Teat Length | [Bar] | | | | | 0.32 | Longer |
| R.Teat Placement | [Bar] | | | | | 1.8 | Close |
| Teat Pos Side | [Bar] | | | | | 0.28 | Apart |
| Locomotion | [Bar] | | | | | 1.78 | Excellent |

| Daughters in Herds 0 Dtrs 0 Herds 53% Rel | | | | |
|---|------|----------|-----------------|---------------|
| Fertility Index | 1.6 | Improver | Condition Score | -0.60 Low |
| Lifespan | 94 | Improver | Maintenance | 25 High |
| Direct Calving Ease | -1.2 | Harder | Calf Survival | 1.5 Improver |
| SCC | -22 | Improver | Dairy Carcase | -0.1 Average |
| Mastitis | -2.0 | Improver | Milking Speed | -0.26 Average |
| TB Advantage | 0.6 | Improver | Temperament | 0.37 Average |
| Lameness Adv | 2.0 | Improver | B/K Casein | A1A2/BB |

Type Data supplied by Holstein UK
 Production and Fitness data supplied by AHDB Dairy



Mr Rubicon DYNAMO-ET

Rubicon x Robust x Planet



DAM MISS OCD ROBST DELICIOUS VG87

HBN: HOL840003132198333 AI Code: H05147
 Dam: Miss Ocd Robst Delicious-ET VG87
 2nd Dam: OCD Planet Danica ET EX93 2E
 3rd Dam: Miss Elegant Delight-ET VG88

| PRODUCTION DTRS 0 HERDS 0 Dec 2019 SOURCE GBR | | | | |
|---|---------|----------|------|-----------|
| Milk Kgs | Fat Kgs | Prot Kgs | £SCI | PLI £691 |
| 1042 | 40.7 | 30.5 | 287 | |
| Rel% | Fat% | Prot% | £ACI | £PLI Rel% |
| 68 | 0 | -0.04 | 499 | 65 |

| | -2 | -1 | 0 | 1 | 2 | | |
|------------------|-------|----|---|---|---|-------|-----------|
| UK Type Merit | [Bar] | | | | | 2.39 | Excellent |
| UK Udder Comp | [Bar] | | | | | 1.55 | Excellent |
| UK Feet and Legs | [Bar] | | | | | 1.54 | Excellent |
| Stature | [Bar] | | | | | -0.1 | Average |
| Chest Width | [Bar] | | | | | 0.2 | Wide |
| Body Depth | [Bar] | | | | | -0.11 | Average |
| Angularity | [Bar] | | | | | 1.24 | Open Rib |
| Rump Angle | [Bar] | | | | | -0.7 | Higher |
| Rump Width | [Bar] | | | | | 1.55 | Wide |
| Rear Leg Side | [Bar] | | | | | 0.79 | Sickled |
| Foot Angle | [Bar] | | | | | -0.44 | Low |
| F.Udder Attach | [Bar] | | | | | 0.89 | Tight |
| R. Udder Height | [Bar] | | | | | 1.8 | Very High |
| Udder Support | [Bar] | | | | | 1.65 | Strong |
| Udder Depth | [Bar] | | | | | 0.67 | Shallow |
| F.Teat Placement | [Bar] | | | | | 1.11 | Close |
| Teat Length | [Bar] | | | | | -0.41 | Shorter |
| R.Teat Placement | [Bar] | | | | | 1.67 | Close |
| Teat Pos Side | [Bar] | | | | | 0.64 | Apart |
| Locomotion | [Bar] | | | | | 1.89 | Excellent |

| Daughters in Herds 0 Dtrs 0 Herds 58% Rel | | | | |
|---|------|----------|-----------------|--------------|
| Fertility Index | 2.9 | Improver | Condition Score | -0.22 Low |
| Lifespan | 161 | Improver | Maintenance | -2 Low |
| Direct Calving Ease | -0.1 | Average | Calf Survival | -0.3 Non Imp |
| SCC | -16 | Improver | Dairy Carcase | 1.4 Improver |
| Mastitis | -2.0 | Improver | Milking Speed | 0.11 Average |
| TB Advantage | -0.5 | Average | Temperament | 0.49 Average |
| Lameness Adv | 2.4 | Improver | B/K Casein | A1A2/AE |

Type Data supplied by Holstein UK
 Production and Fitness data supplied by AHDB Dairy



ST Gen R-Agro ESQUIRE

Rubi-Agronaut x Powerball-P x Supersire



HBN: HOL840003132352999 AI Code: H05521

Dam: Ihg Power Elsa 9589 ET GP80
 2nd Dam: Farnear Supersire 1678
 3rd Dam: Morningview Super Ellie ET EX91

| PRODUCTION DTRS 0 HERDS 0 Dec 2019 SOURCE GBR | | | | |
|---|---------|----------|------|-----------|
| Milk Kgs | Fat Kgs | Prot Kgs | £SCI | PLI £785 |
| 990 | 37 | 35.4 | 372 | |
| Rel% | Fat% | Prot% | £ACI | £PLI Rel% |
| 67 | -0.02 | 0.04 | 589 | 64 |

| | -2 | -1 | 0 | 1 | 2 | | |
|------------------|-------|----|---|---|---|-------|-----------|
| UK Type Merit | [Bar] | | | | | 2.65 | Excellent |
| UK Udder Comp | [Bar] | | | | | 1.8 | Excellent |
| UK Feet and Legs | [Bar] | | | | | 1.79 | Excellent |
| Stature | [Bar] | | | | | 1.44 | Taller |
| Chest Width | [Bar] | | | | | 0.75 | Wide |
| Body Depth | [Bar] | | | | | 0.4 | Average |
| Angularity | [Bar] | | | | | 0.85 | Open Rib |
| Rump Angle | [Bar] | | | | | 1.03 | Lower |
| Rump Width | [Bar] | | | | | 1.43 | Wide |
| Rear Leg Side | [Bar] | | | | | -0.13 | Straight |
| Foot Angle | [Bar] | | | | | 1.23 | Steep |
| F.Udder Attach | [Bar] | | | | | 1.49 | Tight |
| R. Udder Height | [Bar] | | | | | 1.5 | Very High |
| Udder Support | [Bar] | | | | | 1.24 | Strong |
| Udder Depth | [Bar] | | | | | 1.04 | Shallow |
| F.Teat Placement | [Bar] | | | | | 1.87 | Close |
| Teat Length | [Bar] | | | | | -0.75 | Shorter |
| R.Teat Placement | [Bar] | | | | | 1.67 | Close |
| Teat Pos Side | [Bar] | | | | | 0.4 | Apart |
| Locomotion | [Bar] | | | | | 1.63 | Excellent |

| Daughters in Herds 0 Dtrs 0 Herds 53% Rel | | | | |
|---|------|----------|-----------------|---------------|
| Fertility Index | 9.0 | Improver | Condition Score | 0.43 High |
| Lifespan | 143 | Improver | Maintenance | 16 High |
| Direct Calving Ease | -1.2 | Harder | Calf Survival | -0.2 Non Imp |
| SCC | -27 | Improver | Dairy Carcase | 0.0 Average |
| Mastitis | -3.0 | Improver | Milking Speed | -0.24 Average |
| TB Advantage | 0.1 | Average | Temperament | 0.42 Average |
| Lameness Adv | 1.9 | Improver | B/K Casein | A1A2/BE |

Type Data supplied by Holstein UK
 Production and Fitness data supplied by AHDB Dairy



Endco **EVOLVE P**
Powerball-P x Balisto x Epic



HBN: HOL840003129038324 AI Code: HO4511
Dam: Royal-Vista Balisto Esta ET
2nd Dam: Royal-Vista Epic Estelle EX91
3rd Dam: Mor-Yet Goldwyn 682-ET EX94

| PRODUCTION DTRS 0 HERDS 0 Dec 2019 SOURCE GBR | | | | |
|---|---------|----------|------|-----------|
| Milk Kgs | Fat Kgs | Prot Kgs | £SCI | PLI £629 |
| 578 | 28.6 | 28.5 | 318 | |
| Rel% | Fat% | Prot% | £ACI | £PLI Rel% |
| 68 | 0.07 | 0.12 | 490 | 65 |

| | -2 | -1 | 0 | 1 | 2 | |
|------------------|----|----|---|---|---|----------------|
| UK Type Merit | | | | | | 2.43 Excellent |
| UK Udder Comp | | | | | | 2.2 Excellent |
| UK Feet and Legs | | | | | | 0.70 Excellent |
| Stature | | | | | | 1.69 Taller |
| Chest Width | | | | | | -0.41 Narrow |
| Body Depth | | | | | | 0.24 Average |
| Angularity | | | | | | 1.19 Open Rib |
| Rump Angle | | | | | | 0.59 Lower |
| Rump Width | | | | | | 1.29 Wide |
| Rear Leg Side | | | | | | 0.7 Sickled |
| Foot Angle | | | | | | 0.16 Steep |
| F.Udder Attach | | | | | | 2.63 Tight |
| R. Udder Height | | | | | | 1.83 Very High |
| Udder Support | | | | | | 0.58 Strong |
| Udder Depth | | | | | | 2.24 Shallow |
| F.Teat Placement | | | | | | 1.27 Close |
| Teat Length | | | | | | 0.41 Longer |
| R.Teat Placement | | | | | | -0.07 Apart |
| Teat Pos Side | | | | | | -0.11 Close |
| Locomotion | | | | | | 0.53 Excellent |

| Daughters in Herds 0 Dtrs 0 Herds 57% Rel | | | | |
|---|------|----------|-----------------|----------------|
| Fertility Index | 9.3 | Improver | Condition Score | -0.78 Low |
| Lifespan | 115 | Improver | Maintenance | 10 High |
| Direct Calving Ease | 0.2 | Average | Calf Survival | -3.0 Non Imp |
| SCC | -14 | Improver | Dairy Carcase | 0.1 Improver |
| Mastitis | -1.0 | Average | Milking Speed | 1.10 Improver |
| TB Advantage | 1.8 | Improver | Temperament | 0.84 Excellent |
| Lameness Adv | 2.8 | Improver | B/K Casein | A2A2/BB |

Type Data supplied by Holstein UK
Production and Fitness data supplied by AHDB Dairy



NH Sunview **FANTASTIC**
Flattop x Balisto x Sudan



DAM NH HS MARILYN MONROE VG86

HBN: HOLDEU000770405791 AI Code: HO4826
Dam: NH HS Marilyn Monroe 747 VG86 2yr
2nd Dam: Vekis Sudan Mellow VG87 2yr
3rd Dam: Vekis Xaco Melody VG87

| PRODUCTION DTRS 0 HERDS 0 Dec 2019 SOURCE GBR | | | | |
|---|---------|----------|------|-----------|
| Milk Kgs | Fat Kgs | Prot Kgs | £SCI | PLI £734 |
| 336 | 34.4 | 22.3 | 414 | |
| Rel% | Fat% | Prot% | £ACI | £PLI Rel% |
| 68 | 0.26 | 0.14 | 611 | 65 |

| | -2 | -1 | 0 | 1 | 2 | |
|------------------|----|----|---|---|---|----------------|
| UK Type Merit | | | | | | 1.22 Excellent |
| UK Udder Comp | | | | | | 1.35 Excellent |
| UK Feet and Legs | | | | | | 0.35 Excellent |
| Stature | | | | | | -0.3 Shorter |
| Chest Width | | | | | | 0.26 Wide |
| Body Depth | | | | | | -0.07 Average |
| Angularity | | | | | | -0.14 Coarse |
| Rump Angle | | | | | | -0.43 Higher |
| Rump Width | | | | | | -0.36 Narrow |
| Rear Leg Side | | | | | | -0.82 Straight |
| Foot Angle | | | | | | 1.07 Steep |
| F.Udder Attach | | | | | | 1.65 Tight |
| R. Udder Height | | | | | | 0.94 Very High |
| Udder Support | | | | | | -0.17 Broken |
| Udder Depth | | | | | | 1.34 Shallow |
| F.Teat Placement | | | | | | 0.5 Close |
| Teat Length | | | | | | -0.2 Shorter |
| R.Teat Placement | | | | | | 0.1 Close |
| Teat Pos Side | | | | | | 0.38 Apart |
| Locomotion | | | | | | 0.47 Excellent |

| Daughters in Herds 0 Dtrs 0 Herds 56% Rel | | | | |
|---|------|----------|-----------------|----------------|
| Fertility Index | 3.1 | Improver | Condition Score | 0.79 High |
| Lifespan | 167 | Improver | Maintenance | -1 Low |
| Direct Calving Ease | -0.1 | Average | Calf Survival | 2.6 Improver |
| SCC | -37 | Improver | Dairy Carcase | -0.7 Non Imp |
| Mastitis | -5.0 | Improver | Milking Speed | 0.06 Average |
| TB Advantage | -0.4 | Average | Temperament | 1.08 Excellent |
| Lameness Adv | 0.9 | Improver | B/K Casein | A1A2/BB |

Type Data supplied by Holstein UK
Production and Fitness data supplied by AHDB Dairy



STGen Rubi-Agro **FLICK**
Rubi-Agronaut x Jedi x Numero Uno



GDAM EDG SHAKER UNO 18025 VG89

HBN: HOL840003132356827 AI Code: HO6085
Dam: Genosource Jedi Shaylee GP81
2nd Dam: EDG Shaker Uno 18025 VG89
3rd Dam: Ms Moviestar Shaker VG85

| PRODUCTION DTRS 0 HERDS 0 Dec 2019 SOURCE GBR | | | | |
|---|---------|----------|------|-----------|
| Milk Kgs | Fat Kgs | Prot Kgs | £SCI | PLI £833 |
| 490 | 36.6 | 23.8 | 502 | |
| Rel% | Fat% | Prot% | £ACI | £PLI Rel% |
| 67 | 0.21 | 0.1 | 713 | 64 |

| | -2 | -1 | 0 | 1 | 2 | |
|------------------|----|----|---|---|---|----------------|
| UK Type Merit | | | | | | 2.48 Excellent |
| UK Udder Comp | | | | | | 2.17 Excellent |
| UK Feet and Legs | | | | | | 1.46 Excellent |
| Stature | | | | | | -0.3 Shorter |
| Chest Width | | | | | | 0.04 Wide |
| Body Depth | | | | | | -0.51 Shallow |
| Angularity | | | | | | 0.39 Open Rib |
| Rump Angle | | | | | | -1.01 Higher |
| Rump Width | | | | | | -0.15 Narrow |
| Rear Leg Side | | | | | | 0.11 Sickled |
| Foot Angle | | | | | | 0.54 Steep |
| F.Udder Attach | | | | | | 2.19 Tight |
| R. Udder Height | | | | | | 1.73 Very High |
| Udder Support | | | | | | 1.12 Strong |
| Udder Depth | | | | | | 1.79 Shallow |
| F.Teat Placement | | | | | | 1.3 Close |
| Teat Length | | | | | | -1.11 Shorter |
| R.Teat Placement | | | | | | 0.92 Close |
| Teat Pos Side | | | | | | 0.57 Apart |
| Locomotion | | | | | | 1.53 Excellent |

| Daughters in Herds 0 Dtrs 0 Herds 53% Rel | | | | |
|---|------|----------|-----------------|---------------|
| Fertility Index | 13.9 | Improver | Condition Score | 0.26 High |
| Lifespan | 219 | Improver | Maintenance | -4 Low |
| Direct Calving Ease | -0.1 | Average | Calf Survival | 0.8 Improver |
| SCC | -25 | Improver | Dairy Carcase | -0.1 Average |
| Mastitis | -2.0 | Improver | Milking Speed | 0.66 Improver |
| TB Advantage | 0.0 | Average | Temperament | 0.34 Average |
| Lameness Adv | 1.8 | Improver | B/K Casein | A1A2/BB |

Type Data supplied by Holstein UK
Production and Fitness data supplied by AHDB Dairy



Overside **FLINCH**
Superhero x Silver x Altoak



DAM SAHARA SILVER FLEUR ET VG87

HBN: HOLGBR560941503510 AI Code: HO5519
Dam: Sahara Silver Fleur ET VG87
2nd Dam: Sahara Oak Fleur ET VG87
3rd Dam: Apina Fleur VG89

| PRODUCTION DTRS 0 HERDS 0 Dec 2019 SOURCE GBR | | | | |
|---|---------|----------|------|-----------|
| Milk Kgs | Fat Kgs | Prot Kgs | £SCI | PLI £603 |
| 580 | 29.9 | 21.8 | 309 | |
| Rel% | Fat% | Prot% | £ACI | £PLI Rel% |
| 68 | 0.08 | 0.04 | 478 | 64 |

| | -2 | -1 | 0 | 1 | 2 | |
|------------------|----|----|---|---|---|----------------|
| UK Type Merit | | | | | | 2.27 Excellent |
| UK Udder Comp | | | | | | 2 Excellent |
| UK Feet and Legs | | | | | | 1.55 Excellent |
| Stature | | | | | | 1.39 Taller |
| Chest Width | | | | | | 0.78 Wide |
| Body Depth | | | | | | 0.22 Average |
| Angularity | | | | | | -0.27 Coarse |
| Rump Angle | | | | | | 0.03 Lower |
| Rump Width | | | | | | 0.27 Wide |
| Rear Leg Side | | | | | | -0.39 Straight |
| Foot Angle | | | | | | 1.17 Steep |
| F.Udder Attach | | | | | | 2.35 Tight |
| R. Udder Height | | | | | | 1.48 Very High |
| Udder Support | | | | | | 1.16 Strong |
| Udder Depth | | | | | | 2.03 Shallow |
| F.Teat Placement | | | | | | 0.82 Close |
| Teat Length | | | | | | -0.42 Shorter |
| R.Teat Placement | | | | | | 0.23 Close |
| Teat Pos Side | | | | | | 1.33 Apart |
| Locomotion | | | | | | 1.84 Excellent |

| Daughters in Herds 0 Dtrs 0 Herds 55% Rel | | | | |
|---|------|----------|-----------------|----------------|
| Fertility Index | 10.7 | Improver | Condition Score | 1.07 High |
| Lifespan | 131 | Improver | Maintenance | 18 High |
| Direct Calving Ease | -1.3 | Harder | Calf Survival | 0.9 Improver |
| SCC | -16 | Improver | Dairy Carcase | 0.6 Improver |
| Mastitis | 0.0 | Average | Milking Speed | 1.57 Improver |
| TB Advantage | 1.1 | Improver | Temperament | 0.91 Excellent |
| Lameness Adv | 2.0 | Improver | B/K Casein | A1A2/BE |

Type Data supplied by Holstein UK
Production and Fitness data supplied by AHDB Dairy



TW GOODWHONE

Mogul x Active x Laudan



GOODWHONE DTRS AT BARBER FARMS

HBN: HOLNLD000843570795 AI Code: HO2550
 Dam: Campogallo Gaia ET VG86
 2nd Dam: Campogallo Simona ET EX90
 3rd Dam: Q G Zante VG87

PRODUCTION DTRS 5108 HERDS 772 | Dec 2019 | SOURCE ITB

| Milk Kgs | Fat Kgs | Prot Kgs | £SCI | PLI £475 |
|----------|---------|----------|------|-----------|
| -131 | 20.4 | 7.7 | 291 | |
| Rel% | Fat% | Prot% | £ACI | £PLI Rel% |
| 99 | 0.33 | 0.15 | 418 | 99 |

| | -2 | -1 | 0 | 1 | 2 | |
|------------------|----|----|---|---|---|----------------|
| UK Type Merit | | | | | | 2.37 Excellent |
| UK Udder Comp | | | | | | 1.94 Excellent |
| UK Feet and Legs | | | | | | 1.64 Excellent |
| Stature | | | | | | 0.28 Taller |
| Chest Width | | | | | | 0.26 Wide |
| Body Depth | | | | | | -0.24 Average |
| Angularity | | | | | | 0.28 Open Rib |
| Rump Angle | | | | | | 0.71 Lower |
| Rump Width | | | | | | 0.73 Wide |
| Rear Leg Side | | | | | | -0.45 Straight |
| Foot Angle | | | | | | 0.82 Steep |
| F.Udder Attach | | | | | | 1.97 Tight |
| R. Udder Height | | | | | | 2.03 Very High |
| Udder Support | | | | | | 0.92 Strong |
| Udder Depth | | | | | | 1.77 Shallow |
| F.Teat Placement | | | | | | 1 Close |
| Teat Length | | | | | | 0.5 Longer |
| R.Teat Placement | | | | | | 0.48 Close |
| Teat Pos Side | | | | | | 1.35 Apart |
| Locomotion | | | | | | 1.88 Excellent |

Source ITB | Daughters in Herds | 1814 Dtrs 384 Herds 99% Rel

| | | | | | |
|---------------------|------|----------|-----------------|---------|----------|
| Fertility Index | 7.4 | Improver | Condition Score | 0.40 | High |
| Lifespan | 115 | Improver | Maintenance | 4 | High |
| Direct Calving Ease | 1.2 | Easy | Calf Survival | 2.2 | Improver |
| SCC | -9 | Improver | Dairy Carcase | -1.2 | Non Imp |
| Mastitis | -2.0 | Improver | Milking Speed | 0.38 | Average |
| TB Advantage | 1.0 | Improver | Temperament | -1.12 | Poor |
| Lameness Adv | 2.9 | Improver | B/K Casein | A1A2/AA | |

Type Data supplied by Holstein UK

Production and Fitness data supplied by AHDB Dairy



Siemers-Lambda HANIKO-ET

Lambda x Monterey x Mogul



GDAM COOKIECUTTER MOG HANKER EX94

HBN: HOL840003144882592 AI Code: HO5811
 Dam: Siemers Monterey Hanika-ET VG86
 2nd Dam: Cookiecutter Mog Hanker-ET EX94
 3rd Dam: Cookiecutter Mom Halo-ET VG88

PRODUCTION DTRS 0 HERDS 0 | Dec 2019 | SOURCE GBR

| Milk Kgs | Fat Kgs | Prot Kgs | £SCI | PLI £427 |
|----------|---------|----------|------|-----------|
| 587 | 23.7 | 21.4 | 115 | |
| Rel% | Fat% | Prot% | £ACI | £PLI Rel% |
| 67 | 0.01 | 0.03 | 270 | 64 |

| | -2 | -1 | 0 | 1 | 2 | |
|------------------|----|----|---|---|---|----------------|
| UK Type Merit | | | | | | 4.11 Excellent |
| UK Udder Comp | | | | | | 3.34 Excellent |
| UK Feet and Legs | | | | | | 1.69 Excellent |
| Stature | | | | | | 3.04 Taller |
| Chest Width | | | | | | 0.73 Wide |
| Body Depth | | | | | | -0.24 Deep |
| Angularity | | | | | | 1.54 Open Rib |
| Rump Angle | | | | | | -0.24 Higher |
| Rump Width | | | | | | 2.4 Wide |
| Rear Leg Side | | | | | | -0.74 Straight |
| Foot Angle | | | | | | 1.04 Steep |
| F.Udder Attach | | | | | | 3.15 Tight |
| R. Udder Height | | | | | | 3.26 Very High |
| Udder Support | | | | | | 2.48 Strong |
| Udder Depth | | | | | | 2.85 Shallow |
| F.Teat Placement | | | | | | 2.53 Close |
| Teat Length | | | | | | -1.39 Shorter |
| R.Teat Placement | | | | | | 2.15 Close |
| Teat Pos Side | | | | | | 1.12 Apart |
| Locomotion | | | | | | 1.8 Excellent |

Daughters in Herds | 0 Dtrs 0 Herds 54% Rel

| | | | | | |
|---------------------|------|----------|-----------------|---------|-----------|
| Fertility Index | 2.9 | Improver | Condition Score | -0.68 | Low |
| Lifespan | 91 | Improver | Maintenance | 29 | High |
| Direct Calving Ease | -1.0 | Harder | Calf Survival | 1.0 | Improver |
| SCC | -8 | Improver | Dairy Carcase | -0.2 | Non Imp |
| Mastitis | -1.0 | Average | Milking Speed | 0.48 | Average |
| TB Advantage | 1.2 | Improver | Temperament | 1.21 | Excellent |
| Lameness Adv | 2.6 | Improver | B/K Casein | A1A1/BE | |

Type Data supplied by Holstein UK

Production and Fitness data supplied by AHDB Dairy



Midas-Touch HANNIBAL

Eldorado x Rubicon x Supersire



3RD DAM COOKIECUTTER MOM HALO VG88

HBN: HOL840003147987767 AI Code: HO5945
 Dam: AOT Rubicon Happening-ET VG85
 2nd Dam: Cookiecutter Ssire Has-ET VG88
 3rd Dam: Cookiecutter Mom Halo-ET VG88

PRODUCTION DTRS 0 HERDS 0 | Dec 2019 | SOURCE GBR

| Milk Kgs | Fat Kgs | Prot Kgs | £SCI | PLI £612 |
|----------|---------|----------|------|-----------|
| 763 | 37.8 | 29 | 269 | |
| Rel% | Fat% | Prot% | £ACI | £PLI Rel% |
| 67 | 0.09 | 0.05 | 462 | 64 |

| | -2 | -1 | 0 | 1 | 2 | |
|------------------|----|----|---|---|---|----------------|
| UK Type Merit | | | | | | 2.3 Excellent |
| UK Udder Comp | | | | | | 1.87 Excellent |
| UK Feet and Legs | | | | | | 0.66 Excellent |
| Stature | | | | | | 0.95 Taller |
| Chest Width | | | | | | 1.16 Wide |
| Body Depth | | | | | | 1.02 Average |
| Angularity | | | | | | 0.76 Open Rib |
| Rump Angle | | | | | | 0.45 Lower |
| Rump Width | | | | | | 0.03 Wide |
| Rear Leg Side | | | | | | -0.85 Straight |
| Foot Angle | | | | | | 0.87 Steep |
| F.Udder Attach | | | | | | 1.59 Tight |
| R. Udder Height | | | | | | 2.21 Very High |
| Udder Support | | | | | | 0.99 Strong |
| Udder Depth | | | | | | 1.31 Shallow |
| F.Teat Placement | | | | | | 0.87 Close |
| Teat Length | | | | | | -0.14 Shorter |
| R.Teat Placement | | | | | | 0.93 Close |
| Teat Pos Side | | | | | | 0.71 Apart |
| Locomotion | | | | | | 0.64 Excellent |

Daughters in Herds | 0 Dtrs 0 Herds 53% Rel

| | | | | | |
|---------------------|------|----------|-----------------|---------|-----------|
| Fertility Index | 4.2 | Improver | Condition Score | 0.43 | High |
| Lifespan | 115 | Improver | Maintenance | 15 | High |
| Direct Calving Ease | -0.6 | Harder | Calf Survival | 1.1 | Improver |
| SCC | -10 | Improver | Dairy Carcase | 1.3 | Improver |
| Mastitis | 0.0 | Average | Milking Speed | 0.49 | Average |
| TB Advantage | 0.8 | Improver | Temperament | 0.95 | Excellent |
| Lameness Adv | 0.6 | Improver | B/K Casein | A2A2/AB | |

Type Data supplied by Holstein UK

Production and Fitness data supplied by AHDB Dairy



Primeval HOLLAND

Charley x Delta x Supersire



GDAM COOKIECUTTER SSIRE HAVE VG86

HBN: HOLNLD000667652329 AI Code: HO5863
 Dam: A-L-H Delta Helios-ET VG86
 2nd Dam: Cookiecutter Ssire Have-ET VG86
 3rd Dam: Cookiecutter Mom Halo-ET VG88

PRODUCTION DTRS 0 HERDS 0 | Dec 2019 | SOURCE GBR

| Milk Kgs | Fat Kgs | Prot Kgs | £SCI | PLI £775 |
|----------|---------|----------|------|-----------|
| 1053 | 33.9 | 33.1 | 395 | |
| Rel% | Fat% | Prot% | £ACI | £PLI Rel% |
| 68 | -0.08 | -0.01 | 619 | 64 |

| | -2 | -1 | 0 | 1 | 2 | |
|------------------|----|----|---|---|---|----------------|
| UK Type Merit | | | | | | 1.21 Excellent |
| UK Udder Comp | | | | | | 0.92 Excellent |
| UK Feet and Legs | | | | | | 0.71 Excellent |
| Stature | | | | | | 0.12 Average |
| Chest Width | | | | | | -0.54 Narrow |
| Body Depth | | | | | | -0.95 Shallow |
| Angularity | | | | | | 0.74 Open Rib |
| Rump Angle | | | | | | -0.08 Higher |
| Rump Width | | | | | | 0.33 Wide |
| Rear Leg Side | | | | | | 0.8 Sickled |
| Foot Angle | | | | | | -0.47 Low |
| F.Udder Attach | | | | | | 0.27 Tight |
| R. Udder Height | | | | | | 0.99 Very High |
| Udder Support | | | | | | 1.08 Strong |
| Udder Depth | | | | | | 0.18 Shallow |
| F.Teat Placement | | | | | | 0.46 Close |
| Teat Length | | | | | | -0.74 Shorter |
| R.Teat Placement | | | | | | 1.12 Close |
| Teat Pos Side | | | | | | 0.77 Apart |
| Locomotion | | | | | | 0.93 Excellent |

Daughters in Herds | 0 Dtrs 0 Herds 55% Rel

| | | | | | |
|---------------------|------|----------|-----------------|---------|-----------|
| Fertility Index | 11.6 | Improver | Condition Score | -0.74 | Low |
| Lifespan | 167 | Improver | Maintenance | -5 | Low |
| Direct Calving Ease | 0.1 | Average | Calf Survival | 1.9 | Improver |
| SCC | -13 | Improver | Dairy Carcase | 0.9 | Improver |
| Mastitis | -2.0 | Improver | Milking Speed | 0.62 | Improver |
| TB Advantage | 1.2 | Improver | Temperament | 1.04 | Excellent |
| Lameness Adv | 2.8 | Improver | B/K Casein | A1A2/AB | |

Type Data supplied by Holstein UK

Production and Fitness data supplied by AHDB Dairy

THE TRAIT LEADERS

Take a look at the very best of both our proven and genomic sires for each trait.

| PLI | | | ACI | | | SCI | | |
|---------|--------------------------|------|-------------|------------------------|------|-----------|-------------------------|------|
| 1 | ST GEN RUBI-AGRO FLICK | 833 | 1 | ST GEN RUBI-AGRO FLICK | 713 | 1 | ST GEN RUBI-AGRO FLICK | 502 |
| 2 | MR RUBI-AGRONAUT 73287 | 823 | 2 | MR RUBI-AGRONAUT 73287 | 695 | 2 | MR RUBI-AGRONAUT 73287 | 487 |
| 3 | DELICIOUS CHARL MIXER | 823 | 3 | RELOUGH RAZZY | 692 | 3 | RELOUGH RAZZY | 472 |
| 4 | RELOUGH RAZZY | 816 | 4 | DELICIOUS CHARL MIXER | 678 | 4 | DELICIOUS CHARL MIXER | 452 |
| 5 | MR WINGS NORTON | 804 | 5 | BOGHILL GLAMOUR ACHAN | 651 | 5 | BOGHILL GLAMOUR ACHAN | 452 |
| 6 | MR DYNASTY NASHVILLE | 802 | 6 | MR WINGS NORTON | 648 | 6 | WILTOR PORTER | 449 |
| 7 | BOGHILL GLAMOUR CURSOR | 795 | 7 | BOGHILL GLAMOUR CURSOR | 642 | 7 | T-GEN-AC JEDI YAGER | 432 |
| 8 | ST GEN R-ARGO ESQUIRE | 785 | 8 | T-GEN-AC JEDI YAGER | 642 | 8 | PREHEN LANCASTER | 432 |
| 9 | NEERDUIST CAMILO | 783 | 9 | WILTOR PORTER | 632 | 9 | BOGHILL GLAMOUR CURSOR | 418 |
| 10 | PINE-TREE KENO IMPORT | 777 | 10 | MR DYNASTY NASHVILLE | 625 | 10 | NEERDUIST CAMILO | 417 |
| MILK | | | FAT % | | | PROTEIN % | | |
| 1 | TJR DUKE DAWSON | 1425 | 1 | TW GOODWHONE | 0.33 | 1 | TW GOODWHONE | 0.15 |
| 2 | COGENT SUPERSHOT | 1263 | 2 | ST GEN RUBICON JONES | 0.32 | 2 | NH SUNVIEW FANTASTIC | 0.14 |
| 3 | HURTGENLEA RICHARD CHARL | 1056 | 3 | EDG RUBICON | 0.28 | 3 | VEKIS DG POPEYE | 0.13 |
| 4 | PRIMEVAL HOLLAND | 1053 | 4 | ST GEN DYNASTY MAROON | 0.28 | 4 | CROSSFELL BLIZZARD | 0.13 |
| 5 | MR RUBICON DYNAMO | 1042 | 5 | MR RUBI-AGRONAUT 73287 | 0.26 | 5 | ENDCO EVOLVE | 0.12 |
| 6 | EDG OUTSIDERS SHOOTER | 1022 | 6 | NH SUNVIEW FANTASTIC | 0.26 | 6 | MR RUBI-AGRONAUT 73287 | 0.1 |
| 7 | MR MASTERMIND | 1016 | 7 | VEKIS DG POPEYE | 0.24 | 7 | ST GEN RUBI-AGRO FLICK | 0.1 |
| 8 | MR DYNASTY NASHVILLE | 1009 | 8 | ST GEN HELIX PACO | 0.23 | 8 | NEERDUIST CAMILO | 0.1 |
| 9 | ST GEN R-ARGO ESQUIRE | 990 | 9 | EDG DELTA-B52 | 0.22 | 9 | T-GEN-AC JEDI YAGER | 0.09 |
| 10 | ST GEN R-HAZE RAPID | 984 | 10 | ST GEN RUBI-AGRO FLICK | 0.21 | 10 | RELOUGH RAZZY | 0.08 |
| FAT kgs | | | PROTEIN kgs | | | CFP kgs | | |
| 1 | EDG RUBICON | 50.9 | 1 | TJR DUKE DAWSON | 39.9 | 1 | EDG OUTSIDERS SHOOTER | 80.7 |
| 2 | ST GEN RUBICON JONES | 50.7 | 2 | ST GEN R-ARGO ESQUIRE | 35.4 | 2 | TJR DUKE DAWSON | 76.3 |
| 3 | EDG OUTSIDERS SHOOTER | 50 | 3 | MR DYNASTY NASHVILLE | 34.4 | 3 | EDG RUBICON | 75.7 |
| 4 | ST GEN HELIX PACO | 47.4 | 4 | BOGHILL GLAMOUR CURSOR | 33.2 | 4 | ST GEN HELIX PACO | 75.5 |
| 5 | TJR EVEREST WATSON | 46.1 | 5 | PRIMEVAL HOLLAND | 33.1 | 5 | MR DYNASTY NASHVILLE | 74.8 |
| 6 | MR FARNEAR HELIX TWITCH | 44.9 | 6 | MR WINGS NORTON | 33 | 6 | MR FARNEAR HELIX TWITCH | 74.6 |
| 7 | ST GEN DYNASTY MAROON | 44.6 | 7 | ST GEN R-HAZE RAPID | 32 | 7 | ST GEN RUBICON JONES | 74 |
| 8 | DE-SU SPRING SILVERADO | 43.3 | 8 | DELICIOUS DW CONFIDE | 31.1 | 8 | DE-SU SPRING SILVERADO | 73.7 |
| 9 | HUL-STEIN BREEZER | 41.2 | 9 | T-GEN-AC JEDI YAGER | 31.1 | 9 | ST GEN R-ARGO ESQUIRE | 72.4 |
| 10 | PINE-TREE KENO IMPORT | 40.8 | 10 | EDG OUTSIDERS SHOOTER | 30.7 | 10 | TJR EVEREST WATSON | 72.1 |

| FERTILITY | | | LIFESPAN | | | DCE | | |
|------------|-------------------------|------|----------|--------------------------|------|-------------|--------------------------|------|
| 1 | PREHEN LANCASTER | 19.4 | 1 | MR RUBI-AGRONAUT 73287 | 234 | 1 | TW GOODWHONE | 1.2 |
| 2 | MR MOVIESTAR MARDI GRAS | 16.3 | 2 | DELICIOUS CHARL MIXER | 228 | 2 | WEH LUCIFER | 1.0 |
| 3 | T-GEN-AC JEDI YAGER | 14.7 | 3 | ST GEN RUBI-AGRO FLICK | 219 | 3 | NEAL BLF BYF | 0.7 |
| 4 | DELICIOUS CHARL MIXER | 14 | 4 | BOGHILL GLAMOUR ACHAN | 219 | 4 | GEN PORTO | 0.7 |
| 5 | ST GEN RUBI-AGRO FLICK | 13.9 | 5 | WILTOR PORTER | 219 | 5 | R DG ALADDIN-RED | 0.6 |
| 6 | BOGHILL GLAMOUR ACHAN | 13.5 | 6 | KOEPON SHIELD-RED | 216 | 6 | WILTOR PORTER | 0.5 |
| 7 | WILTOR PORTER | 13.4 | 7 | RELOUGH RAZZY | 213 | 7 | HURTGENLEA RICHARD CHARL | 0.4 |
| 8 | MR RUBI-AGRONAUT 73287 | 12.9 | 8 | WEH LUCIFER | 204 | 8 | BOGHILL GLAMOUR ACHAN | 0.3 |
| 9 | RELOUGH RAZZY | 12.9 | 9 | KINGS-RANSOM SCORE | 201 | 9 | PREHEN LANCASTER | 0.3 |
| 10 | ANNAN MARDI | 11.9 | 10 | PREHEN LANCASTER | 195 | 10 | NEERDUIST CAMILO | 0.3 |
| TYPE MERIT | | | MAMMARY | | | LEGS & FEET | | |
| 1 | ECLIPSE MILIO | 4.5 | 1 | SIEMERS LAMBDA HANIKO | 3.34 | 1 | EDG RUBICON | 2.53 |
| 2 | SIEMERS LAMBDA HANIKO | 4.11 | 2 | ECLIPSE MILIO | 3.31 | 2 | CYCLE MCGUCCI JORDY RED | 2.46 |
| 3 | COL DG CRUSHTIME | 3.99 | 3 | COL DG CRUSHTIME | 2.96 | 3 | MR RUBI-AGRONAUT 73287 | 2.27 |
| 4 | ALH DROGO | 3.79 | 4 | BLONDIN J CROWN ROYAL | 2.88 | 4 | HARTFORD RUBI-TAZ | 2.2 |
| 5 | BLONDIN J CROWN ROYAL | 3.71 | 5 | NH DG AARON | 2.85 | 5 | KINGS-RANSOM SCORE | 2.05 |
| 6 | ST GEN R-HAZE RAPID | 3.56 | 6 | FARNEAR DELTA-LAMBDA | 2.77 | 6 | ST GEN RUBICON JONES | 1.95 |
| 7 | FARNEAR DELTA-LAMBDA | 3.49 | 7 | KINGS-RANSOM SCORE | 2.76 | 7 | COL DG CRUSHTIME | 1.85 |
| 8 | NH DG AARON | 3.48 | 8 | ALH DROGO | 2.74 | 8 | ST GEN R-ARGO ESQUIRE | 1.79 |
| 9 | CYCLE MCGUCCI JORDY RED | 3.44 | 9 | LUCK-E AWESOME RED | 2.73 | 9 | KOEPON SHIELD-RED | 1.71 |
| 10 | LUCK-E AWESOME RED | 3.29 | 10 | ST GEN R-HAZE RAPID | 2.67 | 10 | MR MOVIESTAR MARDI GRAS | 1.71 |
| PTAT | | | GTPI | | | NM\$ | | |
| 1 | ECLIPSE MILIO | 4.57 | 1 | MR FARNEAR HELIX TWITCH | 2877 | 1 | MR DYNASTY NASHVILLE | 1039 |
| 2 | BLONDIN J CROWN ROYAL | 4.08 | 2 | MY DYNASTY NASHVILLE | 2868 | 2 | ST GEN HELIX PACO | 1027 |
| 3 | SIEMERS LAMBDA HANIKO | 3.93 | 3 | ST GEN HELIX PACO | 2859 | 3 | MR FARNEAR HELIX TWITCH | 1011 |
| 4 | NH DG AARON | 3.82 | 4 | DELICIOUS CHARL MIXER | 2854 | 4 | DELICIOUS CHARL MIXER | 1011 |
| 5 | COL DG CRUSHTIME | 3.8 | 5 | MR FRAZZLED ARISTOCRAT | 2784 | 5 | TJR EVEREST WATSON | 994 |
| 6 | CYCLE MCGUCCI JORDY RED | 3.43 | 6 | MR RUBICON DYNAMO | 2784 | 6 | HURTGENLEA RICHARD CHARL | 988 |
| 7 | ALH DROGO | 3.18 | 7 | ST GEN DYNASTY MAROON | 2780 | 7 | HUL-STEIN BREEZER | 988 |
| 8 | AURORA MITCHELL | 3.12 | 8 | AURORA MITCHELL | 2770 | 8 | ST GEN DYNASTY MAROON | 969 |
| 9 | ST GEN R-HAZE RAPID | 3.01 | 9 | HURTGENLEA RICHARD CHARL | 2768 | 9 | MR RUBICON DYNAMO | 962 |
| 10 | STANTONS CHIEF | 3 | 10 | MR WINGS NORTON | 2761 | 10 | MR WINGS NORTON | 946 |





Pine-Tree Keno IMPORT

Kenobi x Spock x Supersire



PGGD DE-SU SUPERSIRE 3349 VG86

HBN: HOL840003150687296 AI Code: H06084
Dam: Rosylane-Llc Spock 10916 GP83
2nd Dam: Rosylane-Llc Supersire 7955
3rd Dam: Rosylane-Llc Petrone 7058

PRODUCTION DTRS 0 HERDS 0 | Dec 2019 | SOURCE GBR

| Milk Kgs | Fat Kgs | Prot Kgs | £SCI | PLI £777 |
|----------|---------|----------|------|-----------|
| 872 | 40.8 | 29.7 | 394 | |
| Rel% | Fat% | Prot% | £ACI | £PLI Rel% |
| 67 | 0.07 | 0.02 | 611 | 63 |

| UK Type Merit | 1.99 | Excellent | | | |
|------------------|-------|-----------|--|--|--|
| UK Udder Comp | 1.69 | Excellent | | | |
| UK Feet and Legs | 0.87 | Excellent | | | |
| Stature | 0.16 | Average | | | |
| Chest Width | 0.79 | Wide | | | |
| Body Depth | 0.06 | Average | | | |
| Angularity | 0.34 | Open Rib | | | |
| Rump Angle | 0.07 | Lower | | | |
| Rump Width | 0.16 | Wide | | | |
| Rear Leg Side | -0.9 | Straight | | | |
| Foot Angle | 0.68 | Steep | | | |
| F.Udder Attach | 1.83 | Tight | | | |
| R. Udder Height | 1.74 | Very High | | | |
| Udder Support | 1.12 | Strong | | | |
| Udder Depth | 1.26 | Shallow | | | |
| F.Teat Placement | 0.68 | Close | | | |
| Teat Length | -0.35 | Shorter | | | |
| R.Teat Placement | 0.57 | Close | | | |
| Teat Pos Side | 0.01 | Apart | | | |
| Locomotion | 1.02 | Excellent | | | |

Daughters in Herds | 0 Dtrs 0 Herds 53% Rel

| | | | | | |
|---------------------|------|----------|-----------------|---------|-----------|
| Fertility Index | 7.3 | Improver | Condition Score | 0.87 | High |
| Lifespan | 152 | Improver | Maintenance | 6 | High |
| Direct Calving Ease | 0.1 | Average | Calf Survival | 2.6 | Improver |
| SCC | -21 | Improver | Dairy Carcase | 1.0 | Improver |
| Mastitis | -3.0 | Improver | Milking Speed | 0.02 | Average |
| TB Advantage | 0.7 | Improver | Temperament | 0.83 | Excellent |
| Lameness Adv | 1.8 | Improver | B/K Casein | A1A2/AB | |

Type Data supplied by Holstein UK
Production and Fitness data supplied by AHDB Dairy



ST Gen Rubicon JONES

Rubicon x Josuper x Numero Uno



DAM MS BRODY JOSPR 32051 ET

HBN: HOL840003132352462 AI Code: H05669
Dam: Ms Brody Jospr 32051
2nd Dam: Ms Benshaee Uno Brody
3rd Dam: Farnear-Tbr-Bh Benshaee ET EX90

PRODUCTION DTRS 0 HERDS 0 | Dec 2019 | SOURCE GBR

| Milk Kgs | Fat Kgs | Prot Kgs | £SCI | PLI £666 |
|----------|---------|----------|------|-----------|
| 604 | 50.7 | 23.3 | 290 | |
| Rel% | Fat% | Prot% | £ACI | £PLI Rel% |
| 68 | 0.32 | 0.04 | 495 | 65 |

| UK Type Merit | 3.14 | Excellent | | | |
|------------------|-------|-----------|--|--|--|
| UK Udder Comp | 1.99 | Excellent | | | |
| UK Feet and Legs | 1.95 | Excellent | | | |
| Stature | 1.93 | Taller | | | |
| Chest Width | 1.63 | Wide | | | |
| Body Depth | 1.09 | Deep | | | |
| Angularity | 1.11 | Open Rib | | | |
| Rump Angle | -1.16 | Higher | | | |
| Rump Width | 1.13 | Wide | | | |
| Rear Leg Side | 0.74 | Sickled | | | |
| Foot Angle | 0.39 | Steep | | | |
| F.Udder Attach | 1.65 | Tight | | | |
| R. Udder Height | 1.59 | Very High | | | |
| Udder Support | 1.72 | Strong | | | |
| Udder Depth | 1.01 | Shallow | | | |
| F.Teat Placement | 1.33 | Close | | | |
| Teat Length | 0.36 | Longer | | | |
| R.Teat Placement | 1.57 | Close | | | |
| Teat Pos Side | 1.26 | Apart | | | |
| Locomotion | 2.27 | Excellent | | | |

Daughters in Herds | 0 Dtrs 0 Herds 58% Rel

| | | | | | |
|---------------------|------|----------|-----------------|---------|----------|
| Fertility Index | 3.9 | Improver | Condition Score | 0.60 | High |
| Lifespan | 176 | Improver | Maintenance | 27 | High |
| Direct Calving Ease | -0.9 | Harder | Calf Survival | -0.1 | Non Imp |
| SCC | -16 | Improver | Dairy Carcase | 0.7 | Improver |
| Mastitis | -1.0 | Average | Milking Speed | 0.84 | Improver |
| TB Advantage | -0.1 | Average | Temperament | 0.32 | Average |
| Lameness Adv | 2.6 | Improver | B/K Casein | A1A2/AE | |

Type Data supplied by Holstein UK
Production and Fitness data supplied by AHDB Dairy



Cycle Mcgucci JORDY RED cvc

Mcgucci x Gold Chip x Lion King



DTR JORDY DESIRE

HBN: HOL840003131666411 AI Code: H05159
Dam: Bryersquart Gchip Jail P ET EX90
2nd Dam: Bryersquart King Jamie-Red GP83
3rd Dam: Bryersquart Amber P-Red-ET GP84

PRODUCTION DTRS 13 HERDS 11 | Dec 2019 | SOURCE ITB

| Milk Kgs | Fat Kgs | Prot Kgs | £SCI | PLI £38 |
|----------|---------|----------|------|-----------|
| 160 | 10.4 | 2.9 | -136 | |
| Rel% | Fat% | Prot% | £ACI | £PLI Rel% |
| 72 | 0.05 | -0.03 | -57 | 66 |

| UK Type Merit | 3.44 | Excellent | | | |
|------------------|-------|-----------|--|--|--|
| UK Udder Comp | 2.38 | Excellent | | | |
| UK Feet and Legs | 2.46 | Excellent | | | |
| Stature | 3.28 | Taller | | | |
| Chest Width | 0.54 | Wide | | | |
| Body Depth | 1.23 | Deep | | | |
| Angularity | 1.12 | Open Rib | | | |
| Rump Angle | -1.06 | Higher | | | |
| Rump Width | 1.5 | Wide | | | |
| Rear Leg Side | -0.71 | Straight | | | |
| Foot Angle | 2.14 | Steep | | | |
| F.Udder Attach | 2.55 | Tight | | | |
| R. Udder Height | 2.85 | Very High | | | |
| Udder Support | 2.4 | Strong | | | |
| Udder Depth | 2.65 | Shallow | | | |
| F.Teat Placement | 1.76 | Close | | | |
| Teat Length | -0.31 | Shorter | | | |
| R.Teat Placement | 1.77 | Close | | | |
| Teat Pos Side | 0.21 | Apart | | | |
| Locomotion | 2.59 | Excellent | | | |

Source ITB | Daughters in Herds | 0 Dtrs 0 Herds 55% Rel

| | | | | | |
|---------------------|------|----------|-----------------|---------|-----------|
| Fertility Index | -4.4 | Non Imp | Condition Score | -0.33 | Low |
| Lifespan | 73 | Improver | Maintenance | 31 | High |
| Direct Calving Ease | -3.1 | Harder | Calf Survival | 0.1 | Improver |
| SCC | -7 | Improver | Dairy Carcase | -2.0 | Non Imp |
| Mastitis | 0.0 | Average | Milking Speed | 0.77 | Improver |
| TB Advantage | 0.6 | Improver | Temperament | 0.83 | Excellent |
| Lameness Adv | 0.1 | Improver | B/K Casein | A1A2/AE | |

Type Data supplied by Holstein UK
Production and Fitness data supplied by AHDB Dairy



Farnear Delta LAMBDA

Delta x Numero Uno x Snowman



DAM EDG LORETTE UNO 2198-ET EX91

HBN: HOL840003125993715 AI Code: H04798
Dam: Edg Lorette Uno 2198 ET EX91
2nd Dam: Velthuis Snowman Lorette ET VG86
3rd Dam: MS Chartriose Lorelei-ET VG87

PRODUCTION DTRS 32 HERDS 11 | Dec 2019 | SOURCE ITB

| Milk Kgs | Fat Kgs | Prot Kgs | £SCI | PLI £629 |
|----------|---------|----------|------|-----------|
| 872 | 29.5 | 25 | 273 | |
| Rel% | Fat% | Prot% | £ACI | £PLI Rel% |
| 75 | -0.06 | -0.04 | 473 | 68 |

| UK Type Merit | 3.49 | Excellent | | | |
|------------------|-------|-----------|--|--|--|
| UK Udder Comp | 2.77 | Excellent | | | |
| UK Feet and Legs | 1.68 | Excellent | | | |
| Stature | 1.54 | Taller | | | |
| Chest Width | 0.24 | Wide | | | |
| Body Depth | 0.38 | Average | | | |
| Angularity | 1.38 | Open Rib | | | |
| Rump Angle | 0.3 | Lower | | | |
| Rump Width | 1.7 | Wide | | | |
| Rear Leg Side | -0.44 | Straight | | | |
| Foot Angle | 1.06 | Steep | | | |
| F.Udder Attach | 2.43 | Tight | | | |
| R. Udder Height | 3.03 | Very High | | | |
| Udder Support | 2.42 | Strong | | | |
| Udder Depth | 1.94 | Shallow | | | |
| F.Teat Placement | 1.61 | Close | | | |
| Teat Length | -0.85 | Shorter | | | |
| R.Teat Placement | 1.7 | Close | | | |
| Teat Pos Side | 0.8 | Apart | | | |
| Locomotion | 1.84 | Excellent | | | |

Source ITB | Daughters in Herds | 0 Dtrs 0 Herds 57% Rel

| | | | | | |
|---------------------|------|----------|-----------------|---------|-----------|
| Fertility Index | 9.7 | Improver | Condition Score | -0.62 | Low |
| Lifespan | 186 | Improver | Maintenance | 13 | High |
| Direct Calving Ease | -0.6 | Harder | Calf Survival | 1.1 | Improver |
| SCC | -16 | Improver | Dairy Carcase | 0.7 | Improver |
| Mastitis | -2.0 | Improver | Milking Speed | 0.56 | Improver |
| TB Advantage | 1.9 | Improver | Temperament | 0.99 | Excellent |
| Lameness Adv | 1.0 | Improver | B/K Casein | A1A2/BB | |

Type Data supplied by Holstein UK
Production and Fitness data supplied by AHDB Dairy



Prehen **LANCASTER**
Penmanship x Shamrock x Garrett



HBN: HOLGBR954082142776 AI Code: H04836
Dam: Prehen Shamrock Lady ET VG88
2nd Dam: Diepenhoek Model Lady 8
3rd Dam: Comestar Model VG87

PRODUCTION DTRS 0 HERDS 0 | Dec 2019 | SOURCE GBR

| Milk Kgs | Fat Kgs | Prot Kgs | £SCI | PLI £688 |
|----------|---------|----------|------|-----------|
| 574 | 21.8 | 17.6 | 432 | |
| Rel% | Fat% | Prot% | £ACI | £PLI Rel% |
| 69 | -0.01 | -0.01 | 608 | 66 |

| | -2 | -1 | 0 | 1 | 2 | |
|------------------|----|----|---|---|---|----------------|
| UK Type Merit | | | | | | 1.47 Excellent |
| UK Udder Comp | | | | | | 1.46 Excellent |
| UK Feet and Legs | | | | | | 1.27 Excellent |
| Stature | | | | | | -0.31 Shorter |
| Chest Width | | | | | | -0.46 Narrow |
| Body Depth | | | | | | -1.64 Shallow |
| Angularity | | | | | | -0.28 Coarse |
| Rump Angle | | | | | | 0.26 Lower |
| Rump Width | | | | | | 0.42 Wide |
| Rear Leg Side | | | | | | 0.23 Sickled |
| Foot Angle | | | | | | -0.09 Low |
| F.Udder Attach | | | | | | 1 Tight |
| R. Udder Height | | | | | | 0.73 Very High |
| Udder Support | | | | | | 1.18 Strong |
| Udder Depth | | | | | | 1.8 Shallow |
| F.Teat Placement | | | | | | 0.79 Close |
| Teat Length | | | | | | -0.95 Shorter |
| R.Teat Placement | | | | | | 1.06 Close |
| Teat Pos Side | | | | | | -0.02 Close |
| Locomotion | | | | | | 1.28 Excellent |

Daughters in Herds | 0 Dtrs 0 Herds 58% Rel

| | | | | | |
|---------------------|------|----------|-----------------|---------|----------|
| Fertility Index | 19.4 | Improver | Condition Score | 0.28 | High |
| Lifespan | 195 | Improver | Maintenance | -6 | Low |
| Direct Calving Ease | 0.3 | Easy | Calf Survival | 1.6 | Improver |
| SCC | -14 | Improver | Dairy Carcase | -0.2 | Non Imp |
| Mastitis | -2.0 | Improver | Milking Speed | 0.63 | Improver |
| TB Advantage | 0.6 | Improver | Temperament | -0.43 | Average |
| Lameness Adv | 2.4 | Improver | B/K Casein | A2A2/AA | |

Type Data supplied by Holstein UK

Production and Fitness data supplied by AHDB Dairy



WEH **LUCIFER**
Imax x Balisto x Alexander



DAM WEH LUCY 169 GP84

HBN: HOLDEU000360980500 AI Code: H06031
Dam: WEH Lucy 169 GP84
2nd Dam: DG Scream & Shout VG85
3rd Dam: Bertaiola Alexander Lidia VG88

PRODUCTION DTRS 0 HERDS 0 | Dec 2019 | SOURCE GBR

| Milk Kgs | Fat Kgs | Prot Kgs | £SCI | PLI £741 |
|----------|---------|----------|------|-----------|
| 768 | 31.3 | 27.9 | 403 | |
| Rel% | Fat% | Prot% | £ACI | £PLI Rel% |
| 67 | 0.01 | 0.03 | 613 | 64 |

| | -2 | -1 | 0 | 1 | 2 | |
|------------------|----|----|---|---|---|----------------|
| UK Type Merit | | | | | | 1.9 Excellent |
| UK Udder Comp | | | | | | 1.63 Excellent |
| UK Feet and Legs | | | | | | 1.30 Excellent |
| Stature | | | | | | -0.84 Shorter |
| Chest Width | | | | | | 0.24 Wide |
| Body Depth | | | | | | -0.34 Average |
| Angularity | | | | | | 0.06 Open Rib |
| Rump Angle | | | | | | -1.12 Higher |
| Rump Width | | | | | | 0.07 Wide |
| Rear Leg Side | | | | | | -0.13 Straight |
| Foot Angle | | | | | | 0.61 Steep |
| F.Udder Attach | | | | | | 1.58 Tight |
| R. Udder Height | | | | | | 1.46 Very High |
| Udder Support | | | | | | 0.76 Strong |
| Udder Depth | | | | | | 1.44 Shallow |
| F.Teat Placement | | | | | | 0.73 Close |
| Teat Length | | | | | | -0.97 Shorter |
| R.Teat Placement | | | | | | 0.19 Close |
| Teat Pos Side | | | | | | 0.88 Apart |
| Locomotion | | | | | | 1.59 Excellent |

Daughters in Herds | 0 Dtrs 0 Herds 54% Rel

| | | | | | |
|---------------------|------|----------|-----------------|---------|----------|
| Fertility Index | 11.2 | Improver | Condition Score | 0.50 | High |
| Lifespan | 204 | Improver | Maintenance | -6 | Low |
| Direct Calving Ease | 1.0 | Easy | Calf Survival | 2.2 | Improver |
| SCC | -2 | Improver | Dairy Carcase | 0.7 | Improver |
| Mastitis | 0.0 | Average | Milking Speed | 0.89 | Improver |
| TB Advantage | 0.5 | Average | Temperament | 0.06 | Average |
| Lameness Adv | 2.3 | Improver | B/K Casein | A2A2/AB | |

Type Data supplied by Holstein UK

Production and Fitness data supplied by AHDB Dairy



COL DG **MAMBO**
Charley x Silver x Supersire



HBN: HOLDEU000539735341 AI Code: H05432
Dam: Arums Kenia VG88
2nd Dam: Arums Ikea GP84 2yr VG86-MS
3rd Dam: Arums Beautiful VG87

PRODUCTION DTRS 0 HERDS 0 | Dec 2019 | SOURCE GBR

| Milk Kgs | Fat Kgs | Prot Kgs | £SCI | PLI £661 |
|----------|---------|----------|------|-----------|
| 676 | 29.5 | 24 | 344 | |
| Rel% | Fat% | Prot% | £ACI | £PLI Rel% |
| 68 | 0.03 | 0.02 | 534 | 64 |

| | -2 | -1 | 0 | 1 | 2 | |
|------------------|----|----|---|---|---|----------------|
| UK Type Merit | | | | | | 1.78 Excellent |
| UK Udder Comp | | | | | | 1 Excellent |
| UK Feet and Legs | | | | | | 1.68 Excellent |
| Stature | | | | | | 0.82 Taller |
| Chest Width | | | | | | 0.2 Wide |
| Body Depth | | | | | | -0.03 Average |
| Angularity | | | | | | 0.68 Open Rib |
| Rump Angle | | | | | | 0.13 Lower |
| Rump Width | | | | | | 0.6 Wide |
| Rear Leg Side | | | | | | -0.19 Straight |
| Foot Angle | | | | | | 0.08 Steep |
| F.Udder Attach | | | | | | 0.77 Tight |
| R. Udder Height | | | | | | 1.51 Very High |
| Udder Support | | | | | | 0.84 Strong |
| Udder Depth | | | | | | 0.53 Shallow |
| F.Teat Placement | | | | | | 0.31 Close |
| Teat Length | | | | | | 0.05 Longer |
| R.Teat Placement | | | | | | 0.28 Close |
| Teat Pos Side | | | | | | 0.07 Apart |
| Locomotion | | | | | | 1.97 Excellent |

Daughters in Herds | 0 Dtrs 0 Herds 55% Rel

| | | | | | |
|---------------------|------|----------|-----------------|---------|-----------|
| Fertility Index | 10.8 | Improver | Condition Score | -0.18 | Low |
| Lifespan | 146 | Improver | Maintenance | 7 | High |
| Direct Calving Ease | 0.2 | Average | Calf Survival | 1.9 | Improver |
| SCC | -19 | Improver | Dairy Carcase | 1.7 | Improver |
| Mastitis | -1.0 | Average | Milking Speed | 0.84 | Improver |
| TB Advantage | 1.0 | Improver | Temperament | 0.53 | Excellent |
| Lameness Adv | 2.5 | Improver | B/K Casein | A1A1/AB | |

Type Data supplied by Holstein UK

Production and Fitness data supplied by AHDB Dairy



Annan **MARDI**
Mardi Gras x Numero Uno x AltaBaxter



DAM ANNAN UNO KIMO VG87

HBN: HOLGBR1581440702874 AI Code: H04262
Dam: Annan Uno Kimo VG87
2nd Dam: Annan Baxter Kimo 2 EX91 2E
3rd Dam: Annan Dominator Kimo EX93 4E

PRODUCTION DTRS 30 HERDS 21 | Dec 2019 | SOURCE ITB

| Milk Kgs | Fat Kgs | Prot Kgs | £SCI | PLI £661 |
|----------|---------|----------|------|-----------|
| 615 | 32.2 | 21.4 | 368 | |
| Rel% | Fat% | Prot% | £ACI | £PLI Rel% |
| 86 | 0.09 | 0.02 | 551 | 78 |

| | -2 | -1 | 0 | 1 | 2 | |
|------------------|----|----|---|---|---|----------------|
| UK Type Merit | | | | | | 2.21 Excellent |
| UK Udder Comp | | | | | | 2.25 Excellent |
| UK Feet and Legs | | | | | | 1.11 Excellent |
| Stature | | | | | | 0.06 Average |
| Chest Width | | | | | | -0.87 Narrow |
| Body Depth | | | | | | -0.97 Shallow |
| Angularity | | | | | | 0.34 Open Rib |
| Rump Angle | | | | | | 0.13 Lower |
| Rump Width | | | | | | 0.83 Wide |
| Rear Leg Side | | | | | | 0.14 Sickled |
| Foot Angle | | | | | | 0.64 Steep |
| F.Udder Attach | | | | | | 2.68 Tight |
| R. Udder Height | | | | | | 3.14 Very High |
| Udder Support | | | | | | 0.93 Strong |
| Udder Depth | | | | | | 2.4 Shallow |
| F.Teat Placement | | | | | | 0.51 Close |
| Teat Length | | | | | | 0.5 Longer |
| R.Teat Placement | | | | | | -0.11 Apart |
| Teat Pos Side | | | | | | -0.18 Close |
| Locomotion | | | | | | 1.22 Excellent |

Source ITB | Daughters in Herds | 30 Dtrs 17 Herds 74% Rel

| | | | | | |
|---------------------|------|----------|-----------------|---------|-----------|
| Fertility Index | 11.9 | Improver | Condition Score | 0.28 | High |
| Lifespan | 158 | Improver | Maintenance | -7 | Low |
| Direct Calving Ease | -0.8 | Harder | Calf Survival | 0.9 | Improver |
| SCC | -10 | Improver | Dairy Carcase | -0.5 | Non Imp |
| Mastitis | -1.0 | Average | Milking Speed | 0.57 | Improver |
| TB Advantage | 1.3 | Improver | Temperament | 1.23 | Excellent |
| Lameness Adv | 0.8 | Improver | B/K Casein | A2A2/AA | |

Type Data supplied by Holstein UK

Production and Fitness data supplied by AHDB Dairy



Mr Moviestar **MARDI GRAS**
Mogul x Planet x Shottle



DTR MOORSHARD MARDI GRAS SHOWER EX92

HBN: HOLUSA00071494657 AI Code: HO2923
Dam: Brookview-E Moviestar ET VG86
2nd Dam: Carters-Corner Shot Melody EX90
3rd Dam: Pine-Tree Missy Melinda VG85

PRODUCTION DTRS 703 HERDS 213 | Dec 2019 | SOURCE ITB

| Milk Kgs | Fat Kgs | Prot Kgs | £SCI | PLI £540 |
|----------|---------|----------|------|-----------|
| 296 | 20.3 | 13 | 328 | |
| Rel% | Fat% | Prot% | £ACI | £PLI Rel% |
| 99 | 0.11 | 0.04 | 482 | 97 |

| UK Type Merit | 2.23 | Excellent | | |
|-------------------|-------|-----------|--|--|
| UK Udder Comp | 1.88 | Excellent | | |
| UK Feet and Legs | 1.71 | Excellent | | |
| Stature | 0.3 | Taller | | |
| Chest Width | 0.41 | Wide | | |
| Body Depth | -0.35 | Average | | |
| Angularity | -0.09 | Coarse | | |
| Rump Angle | 1.02 | Lower | | |
| Rump Width | 1.05 | Wide | | |
| Rear Leg Side | 0.31 | Sickled | | |
| Foot Angle | 0.82 | Steep | | |
| F.Udder Attach | 3.03 | Tight | | |
| R. Udder Height | 1.86 | Very High | | |
| Udder Support | 0.03 | Strong | | |
| Udder Depth | 2.49 | Shallow | | |
| F.Teats Placement | 2.08 | Close | | |
| Teat Length | -0.28 | Shorter | | |
| R.Teats Placement | 0.52 | Close | | |
| Teat Pos Side | -1.71 | Close | | |
| Locomotion | 2.12 | Excellent | | |

Source ITB | Daughters in Herds | 478 Dtrs 156 Herds 97% Rel

| | | | | | |
|---------------------|------|----------|-----------------|---------|-----------|
| Fertility Index | 16.3 | Improver | Condition Score | 0.57 | High |
| Lifespan | 155 | Improver | Maintenance | 6 | High |
| Direct Calving Ease | -1.0 | Harder | Calf Survival | 2.2 | Improver |
| SCC | -8 | Improver | Dairy Carcase | 0.6 | Improver |
| Mastitis | 0.0 | Average | Milking Speed | 0.78 | Improver |
| TB Advantage | 1.7 | Improver | Temperament | 0.72 | Excellent |
| Lameness Adv | 1.1 | Improver | B/K Casein | A1A2/AE | |

Type Data supplied by Holstein UK

Production and Fitness data supplied by AHDB Dairy



ST Gen Dynasty **MAROON**
Dynasty x Delta x Miles



HBN: HOL840003132353432 AI Code: HO5802
Dam: Peak Many Delta 1433-ET GP81
2nd Dam: Leaderwin Miles Many-ET VG85
3rd Dam: Leaderwin Iota Monday-ET EX90

PRODUCTION DTRS 0 HERDS 0 | Dec 2019 | SOURCE GBR

| Milk Kgs | Fat Kgs | Prot Kgs | £SCI | PLI £679 |
|----------|---------|----------|------|-----------|
| 543 | 44.6 | 23.4 | 344 | |
| Rel% | Fat% | Prot% | £ACI | £PLI Rel% |
| 67 | 0.28 | 0.07 | 534 | 64 |

| UK Type Merit | 2.49 | Excellent | | |
|-------------------|-------|-----------|--|--|
| UK Udder Comp | 2.08 | Excellent | | |
| UK Feet and Legs | 1.12 | Excellent | | |
| Stature | 0.36 | Taller | | |
| Chest Width | 1.25 | Wide | | |
| Body Depth | 0.08 | Average | | |
| Angularity | 0.33 | Open Rib | | |
| Rump Angle | -1.22 | Higher | | |
| Rump Width | 1.22 | Wide | | |
| Rear Leg Side | -0.72 | Straight | | |
| Foot Angle | 0.72 | Steep | | |
| F.Udder Attach | 1.9 | Tight | | |
| R. Udder Height | 1.93 | Very High | | |
| Udder Support | 1.59 | Strong | | |
| Udder Depth | 1.26 | Shallow | | |
| F.Teats Placement | 1.26 | Close | | |
| Teat Length | -0.98 | Shorter | | |
| R.Teats Placement | 1.14 | Close | | |
| Teat Pos Side | 0.36 | Apart | | |
| Locomotion | 1.33 | Excellent | | |

Daughters in Herds | 0 Dtrs 0 Herds 53% Rel

| | | | | | |
|---------------------|------|----------|-----------------|---------|----------|
| Fertility Index | 5.0 | Improver | Condition Score | 1.00 | High |
| Lifespan | 155 | Improver | Maintenance | 11 | High |
| Direct Calving Ease | -1.1 | Harder | Calf Survival | -0.2 | Non Imp |
| SCC | -18 | Improver | Dairy Carcase | 0.9 | Improver |
| Mastitis | -2.0 | Improver | Milking Speed | 0.32 | Average |
| TB Advantage | -0.5 | Average | Temperament | 0.50 | Average |
| Lameness Adv | 0.7 | Improver | B/K Casein | A1A2/BE | |

Type Data supplied by Holstein UK

Production and Fitness data supplied by AHDB Dairy



Mr **MASTERMIND**
Montana x Supersire x Bookem



HBN: HOL840003133065125 AI Code: HO5193
Dam: Pen-Col Ss Madame ET VG86
2nd Dam: Pen-Col Bookem Misty ET EX90
3rd Dam: Ms Gold-n-Oaks Maybaine-ET VG88

PRODUCTION DTRS 0 HERDS 0 | Dec 2019 | SOURCE GBR

| Milk Kgs | Fat Kgs | Prot Kgs | £SCI | PLI £698 |
|----------|---------|----------|------|-----------|
| 1016 | 34.1 | 29.3 | 333 | |
| Rel% | Fat% | Prot% | £ACI | £PLI Rel% |
| 68 | -0.07 | -0.04 | 545 | 65 |

| UK Type Merit | 1.31 | Excellent | | |
|-------------------|-------|-----------|--|--|
| UK Udder Comp | 1.31 | Excellent | | |
| UK Feet and Legs | 0.45 | Excellent | | |
| Stature | -0.37 | Shorter | | |
| Chest Width | 0.23 | Wide | | |
| Body Depth | -0.44 | Average | | |
| Angularity | 0.08 | Open Rib | | |
| Rump Angle | 0.1 | Lower | | |
| Rump Width | -0.36 | Narrow | | |
| Rear Leg Side | -0.05 | Straight | | |
| Foot Angle | -0.4 | Low | | |
| F.Udder Attach | 1.25 | Tight | | |
| R. Udder Height | 1.56 | Very High | | |
| Udder Support | 0.96 | Strong | | |
| Udder Depth | 0.61 | Shallow | | |
| F.Teats Placement | -0.11 | Outside | | |
| Teat Length | 1.18 | Longer | | |
| R.Teats Placement | 0.72 | Close | | |
| Teat Pos Side | 0.79 | Apart | | |
| Locomotion | 0.64 | Excellent | | |

Daughters in Herds | 0 Dtrs 0 Herds 56% Rel

| | | | | | |
|---------------------|------|----------|-----------------|---------|----------|
| Fertility Index | 7.7 | Improver | Condition Score | 0.57 | High |
| Lifespan | 155 | Improver | Maintenance | -2 | Low |
| Direct Calving Ease | -1.8 | Harder | Calf Survival | 2.4 | Improver |
| SCC | -23 | Improver | Dairy Carcase | 1.3 | Improver |
| Mastitis | -1.0 | Average | Milking Speed | 0.39 | Average |
| TB Advantage | 1.7 | Improver | Temperament | 0.47 | Average |
| Lameness Adv | 1.9 | Improver | B/K Casein | A1A2/AB | |

Type Data supplied by Holstein UK

Production and Fitness data supplied by AHDB Dairy



Eclipse **MILIO**
Emilio x High Octane x Atwood



DAM ECLIPSE OCTANE PRINCESS 13 VG88

HBN: HOLAUS000H02024975 AI Code: HO5906
Dam: Eclipse Octane Princess 13 VG88
2nd Dam: Eclipse Atwood Princess 8 VG89
3rd Dam: Eclipse Damion G Princess EX90 2E

PRODUCTION DTRS 0 HERDS 0 | Dec 2019 | SOURCE GBR

| Milk Kgs | Fat Kgs | Prot Kgs | £SCI | PLI £94 |
|----------|---------|----------|------|-----------|
| 418 | 22.8 | 8.8 | -160 | |
| Rel% | Fat% | Prot% | £ACI | £PLI Rel% |
| 67 | 0.08 | -0.06 | -52 | 64 |

| UK Type Merit | 4.5 | Excellent | | |
|-------------------|-------|-----------|--|--|
| UK Udder Comp | 3.31 | Excellent | | |
| UK Feet and Legs | 1.54 | Excellent | | |
| Stature | 4.93 | Taller | | |
| Chest Width | 1.35 | Wide | | |
| Body Depth | 2.77 | Deep | | |
| Angularity | 2.42 | Open Rib | | |
| Rump Angle | -1.21 | Higher | | |
| Rump Width | 3.77 | Wide | | |
| Rear Leg Side | 0.49 | Sickled | | |
| Foot Angle | 1.01 | Steep | | |
| F.Udder Attach | 3.37 | Tight | | |
| R. Udder Height | 3.52 | Very High | | |
| Udder Support | 2.36 | Strong | | |
| Udder Depth | 3.35 | Shallow | | |
| F.Teats Placement | 1.49 | Close | | |
| Teat Length | -0.7 | Shorter | | |
| R.Teats Placement | 1.08 | Close | | |
| Teat Pos Side | 1.04 | Apart | | |
| Locomotion | 1.82 | Excellent | | |

Daughters in Herds | 0 Dtrs 0 Herds 54% Rel

| | | | | | |
|---------------------|------|----------|-----------------|---------|-----------|
| Fertility Index | -7.5 | Non Imp | Condition Score | -0.68 | Low |
| Lifespan | 39 | Improver | Maintenance | 49.41 | High |
| Direct Calving Ease | -1.7 | Harder | Calf Survival | 1.0 | Improver |
| SCC | -14 | Improver | Dairy Carcase | -1.3 | Non Imp |
| Mastitis | -1.0 | Average | Milking Speed | 1.29 | Improver |
| TB Advantage | 0.6 | Improver | Temperament | 1.16 | Excellent |
| Lameness Adv | 0.5 | Improver | B/K Casein | A1A2/AE | |

Type Data supplied by Holstein UK

Production and Fitness data supplied by AHDB Dairy



Aurora MITCHELL

Mitchell x Bombero x Mayfield



GDAM AURORA MAYFIELD 13965 VG85

HBN: HOL840003138948156 AI Code: H05817
 Dam: Aurora Bombero 15902 GP83
 2nd Dam: Aurora Mayfield 13965 VG85
 3rd Dam: Aurora Iota 11727 VG88

PRODUCTION DTRS 0 HERDS 0 | Dec 2019 | SOURCE GBR

| Milk Kgs | Fat Kgs | Prot Kgs | £SCI | PLI £538 |
|----------|---------|----------|------|-----------|
| 528 | 27.8 | 19.4 | 238 | |
| Rel% | Fat% | Prot% | £ACI | £PLI Rel% |
| 67 | 0.08 | 0.03 | 407 | 64 |

| UK Type Merit | 2.94 | Excellent | | |
|------------------|-------|-----------|--|--|
| UK Udder Comp | 1.87 | Excellent | | |
| UK Feet and Legs | 1.68 | Excellent | | |
| Stature | 2.04 | Taller | | |
| Chest Width | 0.65 | Wide | | |
| Body Depth | 1.04 | Deep | | |
| Angularity | 1.6 | Open Rib | | |
| Rump Angle | 0.23 | Lower | | |
| Rump Width | 2.03 | Wide | | |
| Rear Leg Side | -0.21 | Straight | | |
| Foot Angle | 1.47 | Steep | | |
| F.Udder Attach | 1.47 | Tight | | |
| R. Udder Height | 2.85 | Very High | | |
| Udder Support | 1.34 | Strong | | |
| Udder Depth | 1.3 | Shallow | | |
| F.Teat Placement | 0.65 | Close | | |
| Teat Length | -0.51 | Shorter | | |
| R.Teat Placement | 0.04 | Close | | |
| Teat Pos Side | 0.8 | Apart | | |
| Locomotion | 1.75 | Excellent | | |

Daughters in Herds | 0 Dtrs 0 Herds 55% Rel

| | | | | | |
|---------------------|------|----------|-----------------|---------|----------|
| Fertility Index | 7.2 | Improver | Condition Score | -0.61 | Low |
| Lifespan | 122 | Improver | Maintenance | 20 | High |
| Direct Calving Ease | -0.4 | Harder | Calf Survival | 0.8 | Improver |
| SCC | -25 | Improver | Dairy Carcase | -0.5 | Non Imp |
| Mastitis | -2.0 | Improver | Milking Speed | 0.73 | Improver |
| TB Advantage | 0.9 | Improver | Temperament | 0.16 | Average |
| Lameness Adv | 1.7 | Improver | B/K Casein | A1A2/AB | |

Type Data supplied by Holstein UK
 Production and Fitness data supplied by AHDB Dairy



Delicious Charl MIXER

Charl x Jedi x Flamer



GDAM MS MIXER 63075 GP82

HBN: HOL840003146617798 AI Code: H06083
 Dam: Ms 63058 GP80
 2nd Dam: Ms Mixer 63075 GP82
 3rd Dam: Ms Delicious Mixer VG87

PRODUCTION DTRS 0 HERDS 0 | Dec 2019 | SOURCE GBR

| Milk Kgs | Fat Kgs | Prot Kgs | £SCI | PLI £823 |
|----------|---------|----------|------|-----------|
| 840 | 29.6 | 29.7 | 452 | |
| Rel% | Fat% | Prot% | £ACI | £PLI Rel% |
| 67 | -0.04 | 0.03 | 678 | 63 |

| UK Type Merit | 2.18 | Excellent | | |
|------------------|-------|-----------|--|--|
| UK Udder Comp | 1.76 | Excellent | | |
| UK Feet and Legs | 1.22 | Excellent | | |
| Stature | 0.15 | Average | | |
| Chest Width | -0.06 | Narrow | | |
| Body Depth | -0.54 | Shallow | | |
| Angularity | 0.74 | Open Rib | | |
| Rump Angle | 0.88 | Lower | | |
| Rump Width | 0.25 | Wide | | |
| Rear Leg Side | -0.31 | Straight | | |
| Foot Angle | 0.16 | Steep | | |
| F.Udder Attach | 1.95 | Tight | | |
| R. Udder Height | 1.41 | Very High | | |
| Udder Support | 0.74 | Strong | | |
| Udder Depth | 1.89 | Shallow | | |
| F.Teat Placement | 0.64 | Close | | |
| Teat Length | -1.68 | Shorter | | |
| R.Teat Placement | 0.13 | Close | | |
| Teat Pos Side | -0.26 | Close | | |
| Locomotion | 1.4 | Excellent | | |

Daughters in Herds | 0 Dtrs 0 Herds 53% Rel

| | | | | | |
|---------------------|------|----------|-----------------|---------|-----------|
| Fertility Index | 14.0 | Improver | Condition Score | -0.28 | Low |
| Lifespan | 228 | Improver | Maintenance | -1 | Low |
| Direct Calving Ease | 0.0 | Average | Calf Survival | 0.7 | Improver |
| SCC | -30 | Improver | Dairy Carcase | 0.8 | Improver |
| Mastitis | -3.0 | Improver | Milking Speed | 0.18 | Average |
| TB Advantage | 0.8 | Improver | Temperament | 0.78 | Excellent |
| Lameness Adv | 1.6 | Improver | B/K Casein | A1A2/BB | |

Type Data supplied by Holstein UK
 Production and Fitness data supplied by AHDB Dairy



Mr Dynasty NASHVILLE

Dynasty x Nominee x Robust



MGD MISS OCD ROBST DELICIOUS-ET VG87

HBN: HOL840003132353072 AI Code: H05650
 Dam: Ms Delicious Nom 60028 ET
 2nd Dam: Miss Ocd Robst Delicious ET VG87
 3rd Dam: OCD Planet Danica-ET EX93 2E

PRODUCTION DTRS 0 HERDS 0 | Dec 2019 | SOURCE GBR

| Milk Kgs | Fat Kgs | Prot Kgs | £SCI | PLI £802 |
|----------|---------|----------|------|-----------|
| 1009 | 40.4 | 34.4 | 394 | |
| Rel% | Fat% | Prot% | £ACI | £PLI Rel% |
| 67 | 0.01 | 0.02 | 625 | 63 |

| UK Type Merit | 1.75 | Excellent | | |
|------------------|-------|-----------|--|--|
| UK Udder Comp | 1.29 | Excellent | | |
| UK Feet and Legs | 1.36 | Excellent | | |
| Stature | 0.09 | Average | | |
| Chest Width | -0.03 | Narrow | | |
| Body Depth | -1.04 | Shallow | | |
| Angularity | 0.46 | Open Rib | | |
| Rump Angle | -0.9 | Higher | | |
| Rump Width | 0.58 | Wide | | |
| Rear Leg Side | -0.13 | Straight | | |
| Foot Angle | 0.8 | Steep | | |
| F.Udder Attach | 0.36 | Tight | | |
| R. Udder Height | 1.42 | Very High | | |
| Udder Support | 1.24 | Strong | | |
| Udder Depth | 0.6 | Shallow | | |
| F.Teat Placement | 0.68 | Close | | |
| Teat Length | -1.11 | Shorter | | |
| R.Teat Placement | 0.76 | Close | | |
| Teat Pos Side | 0.57 | Apart | | |
| Locomotion | 1.48 | Excellent | | |

Daughters in Herds | 0 Dtrs 0 Herds 53% Rel

| | | | | | |
|---------------------|------|----------|-----------------|---------|-----------|
| Fertility Index | 7.5 | Improver | Condition Score | 0.38 | High |
| Lifespan | 192 | Improver | Maintenance | -1 | Low |
| Direct Calving Ease | -0.9 | Harder | Calf Survival | 0.7 | Improver |
| SCC | -19 | Improver | Dairy Carcase | 0.7 | Improver |
| Mastitis | -1.0 | Average | Milking Speed | 0.46 | Average |
| TB Advantage | 0.2 | Average | Temperament | 0.91 | Excellent |
| Lameness Adv | 1.7 | Improver | B/K Casein | A2A2/AB | |

Type Data supplied by Holstein UK
 Production and Fitness data supplied by AHDB Dairy



NEAL

Charley x Mardi Gras x Numero Uno



HBN: HOLFRA005344216790 AI Code: H05001
 Dam: Jideale VG86
 2nd Dam: Ideale VG87
 3rd Dam: Falsamine VG85

PRODUCTION DTRS 0 HERDS 0 | Dec 2019 | SOURCE GBR

| Milk Kgs | Fat Kgs | Prot Kgs | £SCI | PLI £712 |
|----------|---------|----------|------|-----------|
| 758 | 25 | 25.4 | 370 | |
| Rel% | Fat% | Prot% | £ACI | £PLI Rel% |
| 68 | -0.06 | 0.01 | 573 | 64 |

| UK Type Merit | 2.3 | Excellent | | |
|------------------|-------|-----------|--|--|
| UK Udder Comp | 1.96 | Excellent | | |
| UK Feet and Legs | 1.41 | Excellent | | |
| Stature | 0.49 | Taller | | |
| Chest Width | -0.5 | Narrow | | |
| Body Depth | -0.5 | Shallow | | |
| Angularity | 0.67 | Open Rib | | |
| Rump Angle | 0.01 | Lower | | |
| Rump Width | 0.89 | Wide | | |
| Rear Leg Side | 0.37 | Sickled | | |
| Foot Angle | 0.09 | Steep | | |
| F.Udder Attach | 2.52 | Tight | | |
| R. Udder Height | 1.56 | Very High | | |
| Udder Support | -0.03 | Broken | | |
| Udder Depth | 1.82 | Shallow | | |
| F.Teat Placement | 1.65 | Close | | |
| Teat Length | -0.92 | Shorter | | |
| R.Teat Placement | 0.43 | Close | | |
| Teat Pos Side | 0.03 | Apart | | |
| Locomotion | 1.71 | Excellent | | |

Daughters in Herds | 0 Dtrs 0 Herds 55% Rel

| | | | | | |
|---------------------|------|----------|-----------------|---------|-----------|
| Fertility Index | 11.2 | Improver | Condition Score | -0.51 | Low |
| Lifespan | 186 | Improver | Maintenance | -1 | Low |
| Direct Calving Ease | 0.7 | Easy | Calf Survival | 2.0 | Improver |
| SCC | -23 | Improver | Dairy Carcase | 0.3 | Improver |
| Mastitis | -3.0 | Improver | Milking Speed | 0.77 | Improver |
| TB Advantage | 2.0 | Improver | Temperament | 0.90 | Excellent |
| Lameness Adv | 2.5 | Improver | B/K Casein | A1A2/AB | |

Type Data supplied by Holstein UK
 Production and Fitness data supplied by AHDB Dairy



Mr Wings NORTON

Wings x Nominee x Robust

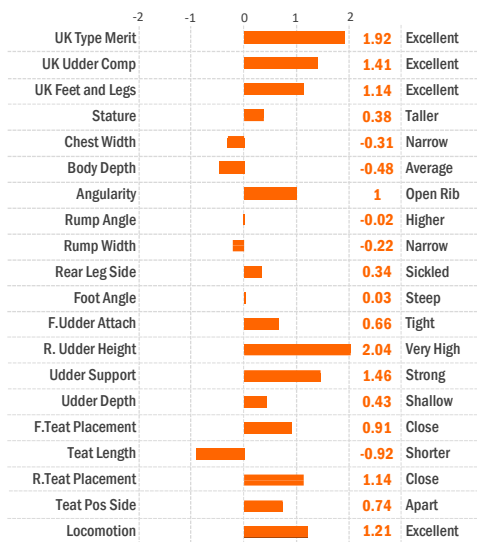


3RD DAM OCD PLANET DANICA EX93 2E

HBN: HOL840003132353282 AI Code: H05651
 Dam: Ms Delicious Nom 60028 ET
 2nd Dam: Miss Ocd Robst Delicious ET VG87
 3rd Dam: OCD Planet Danica-ET EX93 2E

PRODUCTION DTRS 0 HERDS 0 | Dec 2019 | SOURCE GBR

| Milk Kgs | Fat Kgs | Prot Kgs | £SCI | PLI £804 |
|----------|---------|----------|------|-----------|
| 868 | 38.2 | 33 | 414 | |
| Rel% | Fat% | Prot% | £ACI | £PLI Rel% |
| 67 | 0.05 | 0.06 | 648 | 63 |



Daughters in Herds | 0 Dtrs 0 Herds 53% Rel

| Trait | Value | Category | Value | Category |
|---------------------|-------|----------|-----------------|----------------|
| Fertility Index | 9.2 | Improver | Condition Score | -0.53 Low |
| Lifespan | 179 | Improver | Maintenance | -1 Low |
| Direct Calving Ease | -1.0 | Harder | Calf Survival | 2.8 Improver |
| SCC | -16 | Improver | Dairy Carcase | 1.3 Improver |
| Mastitis | -1.0 | Average | Milking Speed | 0.50 Average |
| TB Advantage | 0.6 | Improver | Temperament | 0.99 Excellent |
| Lameness Adv | 1.9 | Improver | B/K Casein | A2A2/AA |

Type Data supplied by Holstein UK
 Production and Fitness data supplied by AHDB Dairy



Carnhill OVERTIME

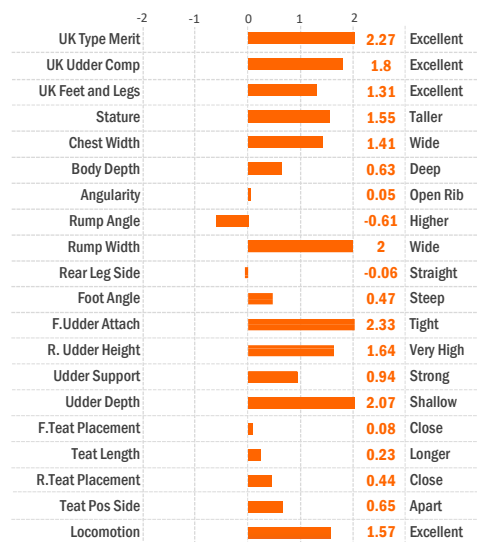
Applejax x Mccutchen x Altaiota



HBN: HOLGBR915004533587 AI Code: H05288
 Dam: Carnhill DG Mccutchen Sara ET VG88
 2nd Dam: Castletru Iota Sara VG88
 3rd Dam: Fiddlersgreen Planet Sara-ET EX91

PRODUCTION DTRS 0 HERDS 0 | Dec 2019 | SOURCE GBR

| Milk Kgs | Fat Kgs | Prot Kgs | £SCI | PLI £620 |
|----------|---------|----------|------|-----------|
| 741 | 31.8 | 22.9 | 285 | |
| Rel% | Fat% | Prot% | £ACI | £PLI Rel% |
| 68 | 0.03 | -0.01 | 468 | 64 |



Daughters in Herds | 0 Dtrs 0 Herds 57% Rel

| Trait | Value | Category | Value | Category |
|---------------------|-------|----------|-----------------|----------------|
| Fertility Index | 8.9 | Improver | Condition Score | 0.71 High |
| Lifespan | 149 | Improver | Maintenance | 24 High |
| Direct Calving Ease | -0.5 | Harder | Calf Survival | 0.6 Improver |
| SCC | -28 | Improver | Dairy Carcase | -0.9 Non Imp |
| Mastitis | -2.0 | Improver | Milking Speed | 0.45 Average |
| TB Advantage | 1.6 | Improver | Temperament | 0.95 Excellent |
| Lameness Adv | 2.7 | Improver | B/K Casein | A1A2/BB |

Type Data supplied by Holstein UK
 Production and Fitness data supplied by AHDB Dairy



St Gen Helix PACO

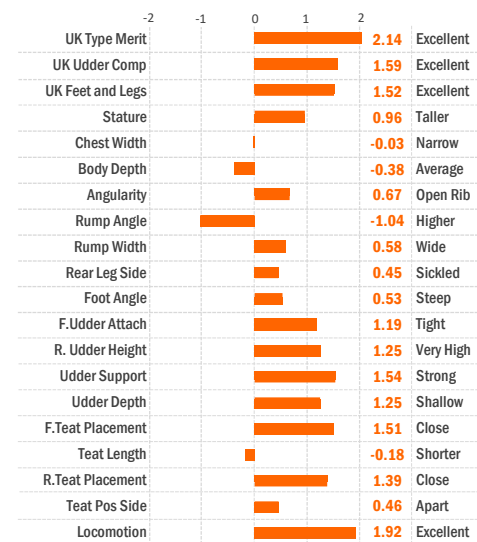
Helix x Rubicon x BOB



HBN: HOL840003132352801 AI Code: H05815
 Dam: Welcome-Tel Rubicon Pipa VG87
 2nd Dam: Welcome-Tel Bob Patia GP82
 3rd Dam: Welcome Bowser Palmer-ET EX90

PRODUCTION DTRS 0 HERDS 0 | Dec 2019 | SOURCE GBR

| Milk Kgs | Fat Kgs | Prot Kgs | £SCI | PLI £750 |
|----------|---------|----------|------|-----------|
| 700 | 47.4 | 28.1 | 382 | |
| Rel% | Fat% | Prot% | £ACI | £PLI Rel% |
| 68 | 0.23 | 0.06 | 587 | 64 |



Daughters in Herds | 0 Dtrs 0 Herds 56% Rel

| Trait | Value | Category | Value | Category |
|---------------------|-------|----------|-----------------|---------------|
| Fertility Index | 7.4 | Improver | Condition Score | -0.28 Low |
| Lifespan | 118 | Improver | Maintenance | 7 High |
| Direct Calving Ease | -0.2 | Average | Calf Survival | 0.2 Improver |
| SCC | -17 | Improver | Dairy Carcase | 1.9 Improver |
| Mastitis | -1.0 | Average | Milking Speed | -0.14 Average |
| TB Advantage | 0.2 | Average | Temperament | -0.10 Average |
| Lameness Adv | 2.9 | Improver | B/K Casein | A1A2/BB |

Type Data supplied by Holstein UK
 Production and Fitness data supplied by AHDB Dairy



Vekis DG POPEYE

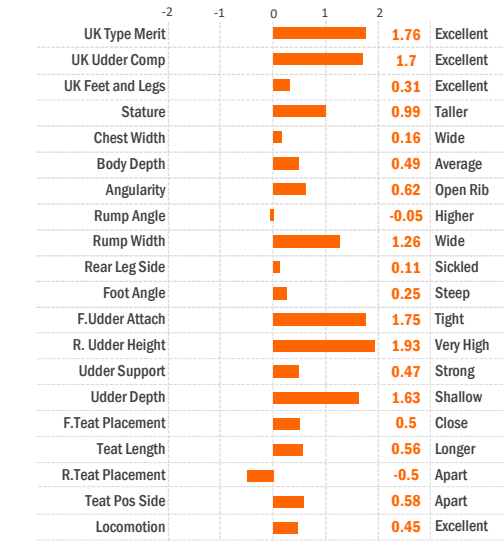
Balisto x Numero Uno x Xacobeo



HBN: HOLNLD000920962055 AI Code: H04488
 Dam: Vekis Paige VG87
 2nd Dam: Vekis Phantastic VG88
 3rd Dam: RR Polly VG87

PRODUCTION DTRS 959 HERDS 437 | Dec 2019 | SOURCE ITB

| Milk Kgs | Fat Kgs | Prot Kgs | £SCI | PLI £478 |
|----------|---------|----------|------|-----------|
| 58 | 20.9 | 12 | 286 | |
| Rel% | Fat% | Prot% | £ACI | £PLI Rel% |
| 87 | 0.24 | 0.13 | 419 | 77 |



Source ITB | Daughters in Herds | 0 Dtrs 0 Herds 58% Rel

| Trait | Value | Category | Value | Category |
|---------------------|-------|----------|-----------------|--------------|
| Fertility Index | 9.8 | Improver | Condition Score | -0.44 Low |
| Lifespan | 100 | Improver | Maintenance | 9 High |
| Direct Calving Ease | -0.6 | Harder | Calf Survival | 0.3 Improver |
| SCC | -20 | Improver | Dairy Carcase | -0.5 Non Imp |
| Mastitis | -3.0 | Improver | Milking Speed | 0.33 Average |
| TB Advantage | 0.0 | Average | Temperament | 0.02 Average |
| Lameness Adv | 1.0 | Improver | B/K Casein | A2A2/AB |

Type Data supplied by Holstein UK
 Production and Fitness data supplied by AHDB Dairy



Wiltor PORTER

Perseus x Supershot x Massey



HBN: HOLGBR727942100444 AI Code: H05612
 Dam: Peak Wiltor Missy VG85
 2nd Dam: RZN Shila ET
 3rd Dam: Ms Moviestar Shaker VG85

PRODUCTION DTRS 0 HERDS 0 | Dec 2019 | SOURCE GBR

| Milk Kgs | Fat Kgs | Prot Kgs | £SCI | PLI £739 |
|----------|---------|----------|------|-----------|
| 462 | 20.6 | 20 | 449 | |
| Rel% | Fat% | Prot% | £ACI | £PLI Rel% |
| 67 | 0.03 | 0.06 | 632 | 64 |

| UK Type Merit | 1.49 | Excellent | | |
|-------------------|-------|-----------|--|--|
| UK Udder Comp | 1.88 | Excellent | | |
| UK Feet and Legs | 0.81 | Excellent | | |
| Stature | -0.4 | Shorter | | |
| Chest Width | 0.75 | Wide | | |
| Body Depth | -1.12 | Shallow | | |
| Angularity | -1.21 | Coarse | | |
| Rump Angle | -1.47 | Higher | | |
| Rump Width | 0.4 | Wide | | |
| Rear Leg Side | 0.34 | Sickled | | |
| Foot Angle | 0.09 | Steep | | |
| F.Udder Attach | 2.11 | Tight | | |
| R. Udder Height | 1.1 | Very High | | |
| Udder Support | 0.49 | Strong | | |
| Udder Depth | 1.75 | Shallow | | |
| F.Teats Placement | 1.27 | Close | | |
| Teat Length | -1.4 | Shorter | | |
| R.Teats Placement | 0.19 | Close | | |
| Teat Pos Side | -0.54 | Close | | |
| Locomotion | 0.88 | Excellent | | |

Daughters in Herds | 0 Dtrs 0 Herds 54% Rel

| | | | | | |
|---------------------|------|----------|-----------------|---------|----------|
| Fertility Index | 13.4 | Improver | Condition Score | 1.67 | High |
| Lifespan | 219 | Improver | Maintenance | 4 | High |
| Direct Calving Ease | 0.5 | Easy | Calf Survival | 1.2 | Improver |
| SCC | -36 | Improver | Dairy Carcase | 1.6 | Improver |
| Mastitis | -5.0 | Improver | Milking Speed | 0.21 | Average |
| TB Advantage | 2.1 | Improver | Temperament | 0.06 | Average |
| Lameness Adv | 1.9 | Improver | B/K Casein | A2A2/BB | |

Type Data supplied by Holstein UK

Production and Fitness data supplied by AHDB Dairy



Gen PORTO

Benz x Modesty x Balisto



3RD DAM HOLEC PANZUL VG88

HBN: HOLNLD000657510961 AI Code: H05921
 Dam: A-L-H Portland
 2nd Dam: Holec Patris
 3rd Dam: Holec Panzul VG88

PRODUCTION DTRS 0 HERDS 0 | Dec 2019 | SOURCE GBR

| Milk Kgs | Fat Kgs | Prot Kgs | £SCI | PLI £668 |
|----------|---------|----------|------|-----------|
| 528 | 29.4 | 24.2 | 367 | |
| Rel% | Fat% | Prot% | £ACI | £PLI Rel% |
| 67 | 0.1 | 0.08 | 552 | 64 |

| UK Type Merit | 2.42 | Excellent | | |
|-------------------|-------|-----------|--|--|
| UK Udder Comp | 1.81 | Excellent | | |
| UK Feet and Legs | 1.52 | Excellent | | |
| Stature | 1.14 | Taller | | |
| Chest Width | 0.15 | Wide | | |
| Body Depth | -0.14 | Average | | |
| Angularity | 0.83 | Open Rib | | |
| Rump Angle | -0.45 | Higher | | |
| Rump Width | 0.67 | Wide | | |
| Rear Leg Side | -0.65 | Straight | | |
| Foot Angle | 0.64 | Steep | | |
| F.Udder Attach | 1.65 | Tight | | |
| R. Udder Height | 1.71 | Very High | | |
| Udder Support | 1.17 | Strong | | |
| Udder Depth | 1.46 | Shallow | | |
| F.Teats Placement | 1.55 | Close | | |
| Teat Length | -0.77 | Shorter | | |
| R.Teats Placement | 1.32 | Close | | |
| Teat Pos Side | 0.29 | Apart | | |
| Locomotion | 1.69 | Excellent | | |

Daughters in Herds | 0 Dtrs 0 Herds 53% Rel

| | | | | | |
|---------------------|------|----------|-----------------|---------|-----------|
| Fertility Index | 11.7 | Improver | Condition Score | -0.13 | Low |
| Lifespan | 164 | Improver | Maintenance | 9 | High |
| Direct Calving Ease | 0.7 | Easy | Calf Survival | 0.6 | Improver |
| SCC | -12 | Improver | Dairy Carcase | 0.7 | Improver |
| Mastitis | -1.0 | Average | Milking Speed | 1.30 | Improver |
| TB Advantage | 0.0 | Average | Temperament | 0.81 | Excellent |
| Lameness Adv | 1.0 | Improver | B/K Casein | A1A2/BB | |

Type Data supplied by Holstein UK

Production and Fitness data supplied by AHDB Dairy



ST Gen R-Haze RAPID

Rubi-Haze x Rubicon x Let it Snow



HBN: HOL840003132352752 AI Code: H05520
 Dam: St Alana Rub 54761
 2nd Dam: Edg Lacy Snow 2114 GP83
 3rd Dam: Kellercrest Manoman Lacy ET VG85

PRODUCTION DTRS 0 HERDS 0 | Dec 2019 | SOURCE GBR

| Milk Kgs | Fat Kgs | Prot Kgs | £SCI | PLI £698 |
|----------|---------|----------|------|-----------|
| 984 | 39.7 | 32 | 291 | |
| Rel% | Fat% | Prot% | £ACI | £PLI Rel% |
| 67 | 0.01 | 0 | 506 | 64 |

| UK Type Merit | 3.56 | Excellent | | |
|-------------------|-------|-----------|--|--|
| UK Udder Comp | 2.67 | Excellent | | |
| UK Feet and Legs | 1.53 | Excellent | | |
| Stature | 2.17 | Taller | | |
| Chest Width | 0.82 | Wide | | |
| Body Depth | 0.73 | Deep | | |
| Angularity | 1.63 | Open Rib | | |
| Rump Angle | -1.18 | Higher | | |
| Rump Width | 1.67 | Wide | | |
| Rear Leg Side | 0.8 | Sickled | | |
| Foot Angle | -0.07 | Low | | |
| F.Udder Attach | 2.55 | Tight | | |
| R. Udder Height | 2.28 | Very High | | |
| Udder Support | 1.84 | Strong | | |
| Udder Depth | 2.1 | Shallow | | |
| F.Teats Placement | 2.46 | Close | | |
| Teat Length | -0.46 | Shorter | | |
| R.Teats Placement | 2.16 | Close | | |
| Teat Pos Side | 1.15 | Apart | | |
| Locomotion | 1.89 | Excellent | | |

Daughters in Herds | 0 Dtrs 0 Herds 53% Rel

| | | | | | |
|---------------------|------|----------|-----------------|---------|----------|
| Fertility Index | 7.6 | Improver | Condition Score | 0.03 | High |
| Lifespan | 164 | Improver | Maintenance | 22 | High |
| Direct Calving Ease | -1.9 | Harder | Calf Survival | 0.4 | Improver |
| SCC | -13 | Improver | Dairy Carcase | -0.1 | Average |
| Mastitis | -1.0 | Average | Milking Speed | 0.68 | Improver |
| TB Advantage | -0.2 | Average | Temperament | 0.29 | Average |
| Lameness Adv | 2.5 | Improver | B/K Casein | A2A2/AB | |

Type Data supplied by Holstein UK

Production and Fitness data supplied by AHDB Dairy



CBL RAVEN

Gymnast x Icone x Let it Snow



GDAM MB 654 VG85

HBN: HOLDEU000360215264 AI Code: H05433
 Dam: MB 474
 2nd Dam: MB 654 VG85
 3rd Dam: Famous VG89

PRODUCTION DTRS 0 HERDS 0 | Dec 2019 | SOURCE GBR

| Milk Kgs | Fat Kgs | Prot Kgs | £SCI | PLI £623 |
|----------|---------|----------|------|-----------|
| 404 | 28.8 | 18.6 | 326 | |
| Rel% | Fat% | Prot% | £ACI | £PLI Rel% |
| 67 | 0.16 | 0.07 | 502 | 64 |

| UK Type Merit | 2.62 | Excellent | | |
|-------------------|-------|-----------|--|--|
| UK Udder Comp | 2.26 | Excellent | | |
| UK Feet and Legs | 1.47 | Excellent | | |
| Stature | 1.44 | Taller | | |
| Chest Width | 0.38 | Wide | | |
| Body Depth | 0.06 | Average | | |
| Angularity | 0.36 | Open Rib | | |
| Rump Angle | -0.14 | Higher | | |
| Rump Width | 0.76 | Wide | | |
| Rear Leg Side | 0.09 | Sickled | | |
| Foot Angle | 0.66 | Steep | | |
| F.Udder Attach | 2.18 | Tight | | |
| R. Udder Height | 2.26 | Very High | | |
| Udder Support | 1.56 | Strong | | |
| Udder Depth | 2.25 | Shallow | | |
| F.Teats Placement | 0.64 | Close | | |
| Teat Length | 0.55 | Longer | | |
| R.Teats Placement | 1.3 | Close | | |
| Teat Pos Side | 0.18 | Apart | | |
| Locomotion | 1.55 | Excellent | | |

Daughters in Herds | 0 Dtrs 0 Herds 53% Rel

| | | | | | |
|---------------------|------|----------|-----------------|---------|-----------|
| Fertility Index | 8.7 | Improver | Condition Score | 0.47 | High |
| Lifespan | 173 | Improver | Maintenance | 15 | High |
| Direct Calving Ease | -0.8 | Harder | Calf Survival | 1.2 | Improver |
| SCC | -24 | Improver | Dairy Carcase | 0.0 | Average |
| Mastitis | -3.0 | Improver | Milking Speed | 0.33 | Average |
| TB Advantage | 0.7 | Improver | Temperament | 1.15 | Excellent |
| Lameness Adv | 1.5 | Improver | B/K Casein | A2A2/AA | |

Type Data supplied by Holstein UK

Production and Fitness data supplied by AHDB Dairy



Relough **RAZZY**
Frazzled x Boastful x Lexor



FULL SISTER TO RELOUGH LEXOR ROXY EX93 2E

HBN: HOLGBR961000318484 AI Code: HO6074
Dam: Relough Boastful Roxy 3 VG87
2nd Dam: Relough Lexor Roxy 3 EX90(2)
3rd Dam: Willsbro Garrett Roxy 2 EX93(3)

| PRODUCTION DTRS 0 HERDS 0 Dec 2019 SOURCE GBR | | | | |
|---|---------|----------|------|-----------|
| Milk Kgs | Fat Kgs | Prot Kgs | £SCI | PLI £816 |
| 526 | 33.9 | 23.7 | 472 | |
| Rel% | Fat% | Prot% | £ACI | £PLI Rel% |
| 68 | 0.16 | 0.08 | 692 | 64 |

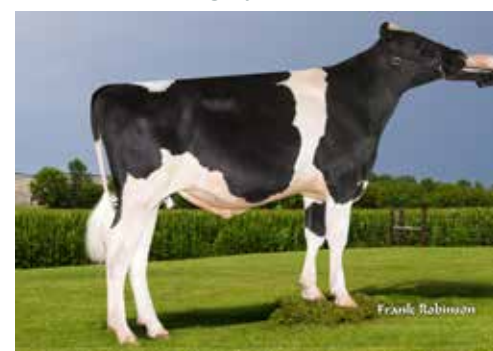
| | -2 | -1 | 0 | 1 | 2 | |
|------------------|----|----|---|---|-------|-----------|
| UK Type Merit | | | | | 1.42 | Excellent |
| UK Udder Comp | | | | | 1.54 | Excellent |
| UK Feet and Legs | | | | | 0.86 | Excellent |
| Stature | | | | | 0.77 | Taller |
| Chest Width | | | | | 0.84 | Wide |
| Body Depth | | | | | -0.1 | Average |
| Angularity | | | | | -0.8 | Coarse |
| Rump Angle | | | | | -0.14 | Higher |
| Rump Width | | | | | -0.21 | Narrow |
| Rear Leg Side | | | | | 0.2 | Sickled |
| Foot Angle | | | | | 0.29 | Steep |
| F.Udder Attach | | | | | 1.29 | Tight |
| R. Udder Height | | | | | 1.44 | Very High |
| Udder Support | | | | | 1.06 | Strong |
| Udder Depth | | | | | 1.64 | Shallow |
| F.Teat Placement | | | | | -0.21 | Outside |
| Teat Length | | | | | -0.54 | Shorter |
| R.Teat Placement | | | | | 0.67 | Close |
| Teat Pos Side | | | | | 0.58 | Apart |
| Locomotion | | | | | 0.89 | Excellent |

| Daughters in Herds 0 Dtrs 0 Herds 55% Rel | | | | |
|---|------|----------|-----------------|---------------|
| Fertility Index | 12.9 | Improver | Condition Score | 1.12 High |
| Lifespan | 213 | Improver | Maintenance | 14 High |
| Direct Calving Ease | -0.3 | Average | Calf Survival | 3.8 Improver |
| SCC | -34 | Improver | Dairy Carcase | 0.6 Improver |
| Mastitis | -4.0 | Improver | Milking Speed | 0.53 Improver |
| TB Advantage | -0.8 | Non Imp | Temperament | 0.28 Average |
| Lameness Adv | 2.6 | Improver | B/K Casein | A1A2/AB |

Type Data supplied by Holstein UK
Production and Fitness data supplied by AHDB Dairy



REDROCK-View **KLUTCH**
Jedi x Kingboy x Numero Uno



HBN: HOL840003138310311 AI Code: HO5191
Dam: Redrock-View Kingboy 367 ET VG88
2nd Dam: Khw Uno Alaska ET EX90
3rd Dam: Kamps-Hollow Altitude-ET RC EX95 4E

| PRODUCTION DTRS 0 HERDS 0 Dec 2019 SOURCE GBR | | | | |
|---|---------|----------|------|-----------|
| Milk Kgs | Fat Kgs | Prot Kgs | £SCI | PLI £685 |
| 827 | 22.6 | 25.9 | 348 | |
| Rel% | Fat% | Prot% | £ACI | £PLI Rel% |
| 68 | -0.12 | -0.01 | 555 | 65 |

| | -2 | -1 | 0 | 1 | 2 | |
|------------------|----|----|---|---|-------|-----------|
| UK Type Merit | | | | | 2.34 | Excellent |
| UK Udder Comp | | | | | 2.44 | Excellent |
| UK Feet and Legs | | | | | 0.26 | Excellent |
| Stature | | | | | 0.77 | Taller |
| Chest Width | | | | | 0.82 | Wide |
| Body Depth | | | | | 0.27 | Average |
| Angularity | | | | | 0.31 | Open Rib |
| Rump Angle | | | | | -0.58 | Higher |
| Rump Width | | | | | 1.09 | Wide |
| Rear Leg Side | | | | | -0.57 | Straight |
| Foot Angle | | | | | 0.47 | Steep |
| F.Udder Attach | | | | | 2.73 | Tight |
| R. Udder Height | | | | | 2.49 | Very High |
| Udder Support | | | | | 1.79 | Strong |
| Udder Depth | | | | | 2.03 | Shallow |
| F.Teat Placement | | | | | 0.71 | Close |
| Teat Length | | | | | 0.77 | Longer |
| R.Teat Placement | | | | | 0.7 | Close |
| Teat Pos Side | | | | | -0.25 | Close |
| Locomotion | | | | | 0.38 | Excellent |

| Daughters in Herds 0 Dtrs 0 Herds 57% Rel | | | | |
|---|------|----------|-----------------|----------------|
| Fertility Index | 11.4 | Improver | Condition Score | 0.70 High |
| Lifespan | 195 | Improver | Maintenance | 12 High |
| Direct Calving Ease | -0.3 | Average | Calf Survival | 3.9 Improver |
| SCC | -27 | Improver | Dairy Carcase | 0.0 Average |
| Mastitis | -2.0 | Improver | Milking Speed | -0.67 Non Imp |
| TB Advantage | 1.1 | Improver | Temperament | 0.89 Excellent |
| Lameness Adv | 1.2 | Improver | B/K Casein | A2A2/BB |

Type Data supplied by Holstein UK
Production and Fitness data supplied by AHDB Dairy



EDG **RUBICON**
Mogul x Robust x Planet



DTR INDEVRA INSEME BARBARELLA VG85

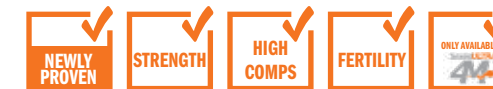
HBN: HOLUSA000072128125 AI Code: HO3632
Dam: Sandy-Valley Robust Ruby ET EX90
2nd Dam: Sandy-Valley Plane Sapphire TY VG87
3rd Dam: Sandy-Valley Bolt Sheila-ET EX92

| PRODUCTION DTRS 110 HERDS 42 Dec 2019 SOURCE COM | | | | |
|--|---------|----------|------|-----------|
| Milk Kgs | Fat Kgs | Prot Kgs | £SCI | PLI £681 |
| 686 | 50.9 | 24.8 | 296 | |
| Rel% | Fat% | Prot% | £ACI | £PLI Rel% |
| 95 | 0.28 | 0.03 | 499 | 91 |

| | -2 | -1 | 0 | 1 | 2 | |
|------------------|----|----|---|---|-------|-----------|
| UK Type Merit | | | | | 3.23 | Excellent |
| UK Udder Comp | | | | | 1.87 | Excellent |
| UK Feet and Legs | | | | | 2.53 | Excellent |
| Stature | | | | | 0.9 | Taller |
| Chest Width | | | | | 1.16 | Wide |
| Body Depth | | | | | 0.37 | Average |
| Angularity | | | | | 1.22 | Open Rib |
| Rump Angle | | | | | -1.01 | Higher |
| Rump Width | | | | | 1.33 | Wide |
| Rear Leg Side | | | | | 0.29 | Sickled |
| Foot Angle | | | | | 0.59 | Steep |
| F.Udder Attach | | | | | 1.66 | Tight |
| R. Udder Height | | | | | 1.31 | Very High |
| Udder Support | | | | | 0.97 | Strong |
| Udder Depth | | | | | 0.97 | Shallow |
| F.Teat Placement | | | | | 1.85 | Close |
| Teat Length | | | | | 0.04 | Longer |
| R.Teat Placement | | | | | 1.41 | Close |
| Teat Pos Side | | | | | 0.7 | Apart |
| Locomotion | | | | | 3.05 | Excellent |

| Source COM Daughters in Herds 81 Dtrs 32 Herds 90% Rel | | | | |
|--|------|----------|-----------------|---------------|
| Fertility Index | 3.0 | Improver | Condition Score | 0.50 High |
| Lifespan | 186 | Improver | Maintenance | 14 High |
| Direct Calving Ease | -1.2 | Harder | Calf Survival | -2.1 Non Imp |
| SCC | -15 | Improver | Dairy Carcase | 0.9 Improver |
| Mastitis | -1.0 | Average | Milking Speed | 0.29 Average |
| TB Advantage | -0.9 | Non Imp | Temperament | -0.07 Average |
| Lameness Adv | 2.3 | Improver | B/K Casein | A1A2/BE |

Type Data supplied by Holstein UK
Production and Fitness data supplied by AHDB Dairy



Mr DDS **RUBI-HAZE** 54682 HH5
Rubicon x Numero Uno x Robust



2ND DAM PINE TREE 2149ROBST 4846 VG87

HBN: HOL840003010353429 AI Code: HO5145
Dam: View-Home Uno Hope ET EX92
2nd Dam: Pine-Tree 2149Robst 4846 ET VG87
3rd Dam: Pine-Tree Zenith Sheen VG87

| PRODUCTION DTRS 45 HERDS 11 Dec 2019 SOURCE ITB | | | | |
|---|---------|----------|------|-----------|
| Milk Kgs | Fat Kgs | Prot Kgs | £SCI | PLI £647 |
| 553 | 33.3 | 21.2 | 329 | |
| Rel% | Fat% | Prot% | £ACI | £PLI Rel% |
| 77 | 0.14 | 0.04 | 515 | 69 |

| | -2 | -1 | 0 | 1 | 2 | |
|------------------|----|----|---|---|-------|-----------|
| UK Type Merit | | | | | 2.51 | Excellent |
| UK Udder Comp | | | | | 1.75 | Excellent |
| UK Feet and Legs | | | | | 1.54 | Excellent |
| Stature | | | | | 1.06 | Taller |
| Chest Width | | | | | 0.79 | Wide |
| Body Depth | | | | | 0.66 | Deep |
| Angularity | | | | | 0.85 | Open Rib |
| Rump Angle | | | | | -0.54 | Higher |
| Rump Width | | | | | 0.49 | Wide |
| Rear Leg Side | | | | | -0.08 | Straight |
| Foot Angle | | | | | -0.08 | Low |
| F.Udder Attach | | | | | 1.51 | Tight |
| R. Udder Height | | | | | 1.44 | Very High |
| Udder Support | | | | | 1.84 | Strong |
| Udder Depth | | | | | 1.03 | Shallow |
| F.Teat Placement | | | | | 0.91 | Close |
| Teat Length | | | | | 0.93 | Longer |
| R.Teat Placement | | | | | 1.19 | Close |
| Teat Pos Side | | | | | 0.84 | Apart |
| Locomotion | | | | | 1.66 | Excellent |

| Source ITB Daughters in Herds 0 Dtrs 0 Herds 58% Rel | | | | |
|--|------|----------|-----------------|---------------|
| Fertility Index | 9.8 | Improver | Condition Score | 0.39 High |
| Lifespan | 189 | Improver | Maintenance | 13 High |
| Direct Calving Ease | -1.8 | Harder | Calf Survival | -0.4 Non Imp |
| SCC | -22 | Improver | Dairy Carcase | 0.2 Improver |
| Mastitis | -2.0 | Improver | Milking Speed | 0.55 Improver |
| TB Advantage | -0.2 | Average | Temperament | 0.36 Average |
| Lameness Adv | 2.5 | Improver | B/K Casein | A2A2/AB |

Type Data supplied by Holstein UK
Production and Fitness data supplied by AHDB Dairy



Butz-Hill Detour SCENIC

Detour x Supersire x Shamrock



HBN: HOL840003132198962 AI Code: H05189
 Dam: Wilra Super Sire 608 ET VG85
 2nd Dam: Wilra Shamrock 294 ET
 3rd Dam: Wilra Massey 997 GP83



Kings-Ransom SCORE

Bandaes x Supershot x Doorman



GDAM KINGS-RANSOM DM DEBONAIR-ET EX93

HBN: HOL840003139851164 AI Code: H05522
 Dam: Kings-Ransom Ssht Divide ET
 2nd Dam: Kings-Ransom Dm Debonair ET EX93
 3rd Dam: Kings-Ransom Dorc Dextra ET EX94



Koepon SHIELD RED

Alaska x Delta x Cashcoin



HBN: HOLNLD000648499884 AI Code: H05813
 Dam: Dg Hs Schreur Sanne
 2nd Dam: Ms Sunview Coin Sunflow GP83
 3rd Dam: Dymentholm Sunview Sunday VG87



BB DG SHILLING

Silver x Supersire x Superstition



HBN: HOLGBR726652200588 AI Code: H044479
 Dam: BB Supersire Sheira VG87
 2nd Dam: Twin Sheira VG85
 3rd Dam: UFM-Dubs Sheray-ET EX90

PRODUCTION DTRS 0 HERDS 0 | Dec 2019 | SOURCE GBR

| Milk Kgs | Fat Kgs | Prot Kgs | £SCI | PLI £642 |
|----------|---------|----------|------|-----------|
| 720 | 35.2 | 23 | 303 | |
| Rel% | Fat% | Prot% | £ACI | £PLI Rel% |
| 68 | 0.08 | 0 | 501 | 65 |

| | -2 | -1 | 0 | 1 | 2 | |
|------------------|----|----|---|---|---|----------------|
| UK Type Merit | | | | | | 2.17 Excellent |
| UK Udder Comp | | | | | | 1.96 Excellent |
| UK Feet and Legs | | | | | | 1.24 Excellent |
| Stature | | | | | | 0.11 Average |
| Chest Width | | | | | | -0.31 Narrow |
| Body Depth | | | | | | -0.58 Shallow |
| Angularity | | | | | | 0.42 Open Rib |
| Rump Angle | | | | | | -0.11 Higher |
| Rump Width | | | | | | -0.1 Narrow |
| Rear Leg Side | | | | | | 0.15 Sickled |
| Foot Angle | | | | | | -0.02 Low |
| F.Udder Attach | | | | | | 1.72 Tight |
| R. Udder Height | | | | | | 2.41 Very High |
| Udder Support | | | | | | 1.25 Strong |
| Udder Depth | | | | | | 1.37 Shallow |
| F.Teat Placement | | | | | | 0.99 Close |
| Teat Length | | | | | | -1.43 Shorter |
| R.Teat Placement | | | | | | 0.23 Close |
| Teat Pos Side | | | | | | 0.29 Apart |
| Locomotion | | | | | | 1.25 Excellent |

Daughters in Herds | 0 Dtrs 0 Herds 56% Rel

| | | | | | |
|---------------------|------|----------|-----------------|---------|-----------|
| Fertility Index | 5.5 | Improver | Condition Score | -0.43 | Low |
| Lifespan | 164 | Improver | Maintenance | -2 | Low |
| Direct Calving Ease | -1.1 | Harder | Calf Survival | 1.7 | Improver |
| SCC | -19 | Improver | Dairy Carcase | 0.5 | Improver |
| Mastitis | -2.0 | Improver | Milking Speed | 0.46 | Average |
| TB Advantage | 1.4 | Improver | Temperament | 0.75 | Excellent |
| Lameness Adv | 0.8 | Improver | B/K Casein | A2A2/AA | |

Type Data supplied by Holstein UK

Production and Fitness data supplied by AHDB Dairy

PRODUCTION DTRS 0 HERDS 0 | Dec 2019 | SOURCE GBR

| Milk Kgs | Fat Kgs | Prot Kgs | £SCI | PLI £633 |
|----------|---------|----------|------|-----------|
| 469 | 27.7 | 20.5 | 313 | |
| Rel% | Fat% | Prot% | £ACI | £PLI Rel% |
| 68 | 0.11 | 0.06 | 490 | 64 |

| | -2 | -1 | 0 | 1 | 2 | |
|------------------|----|----|---|---|---|----------------|
| UK Type Merit | | | | | | 3.22 Excellent |
| UK Udder Comp | | | | | | 2.76 Excellent |
| UK Feet and Legs | | | | | | 2.05 Excellent |
| Stature | | | | | | 1.36 Taller |
| Chest Width | | | | | | 0.79 Wide |
| Body Depth | | | | | | -0.41 Average |
| Angularity | | | | | | 0.08 Open Rib |
| Rump Angle | | | | | | 1.14 Lower |
| Rump Width | | | | | | 1.13 Wide |
| Rear Leg Side | | | | | | -0.19 Straight |
| Foot Angle | | | | | | 0.26 Steep |
| F.Udder Attach | | | | | | 2.83 Tight |
| R. Udder Height | | | | | | 2.24 Very High |
| Udder Support | | | | | | 1.45 Strong |
| Udder Depth | | | | | | 2.6 Shallow |
| F.Teat Placement | | | | | | 2.37 Close |
| Teat Length | | | | | | -1.25 Shorter |
| R.Teat Placement | | | | | | 1.84 Close |
| Teat Pos Side | | | | | | -0.15 Close |
| Locomotion | | | | | | 2.01 Excellent |

Daughters in Herds | 0 Dtrs 0 Herds 56% Rel

| | | | | | |
|---------------------|------|----------|-----------------|---------|-----------|
| Fertility Index | 8.2 | Improver | Condition Score | 0.74 | High |
| Lifespan | 201 | Improver | Maintenance | 17 | High |
| Direct Calving Ease | -0.9 | Harder | Calf Survival | -1.0 | Non Imp |
| SCC | -26 | Improver | Dairy Carcase | 1.7 | Improver |
| Mastitis | -3.0 | Improver | Milking Speed | 1.00 | Improver |
| TB Advantage | 1.5 | Improver | Temperament | 1.27 | Excellent |
| Lameness Adv | 1.7 | Improver | B/K Casein | A2A2/BB | |

Type Data supplied by Holstein UK

Production and Fitness data supplied by AHDB Dairy

PRODUCTION DTRS 0 HERDS 0 | Dec 2019 | SOURCE GBR

| Milk Kgs | Fat Kgs | Prot Kgs | £SCI | PLI £569 |
|----------|---------|----------|------|-----------|
| 775 | 26.7 | 22.5 | 219 | |
| Rel% | Fat% | Prot% | £ACI | £PLI Rel% |
| 67 | -0.04 | -0.03 | 414 | 63 |

| | -2 | -1 | 0 | 1 | 2 | |
|------------------|----|----|---|---|---|----------------|
| UK Type Merit | | | | | | 3.09 Excellent |
| UK Udder Comp | | | | | | 2.25 Excellent |
| UK Feet and Legs | | | | | | 1.71 Excellent |
| Stature | | | | | | 0.55 Taller |
| Chest Width | | | | | | 0.93 Wide |
| Body Depth | | | | | | 0.66 Deep |
| Angularity | | | | | | 1.05 Open Rib |
| Rump Angle | | | | | | -0.68 Higher |
| Rump Width | | | | | | 0.79 Wide |
| Rear Leg Side | | | | | | -0.29 Straight |
| Foot Angle | | | | | | 1.09 Steep |
| F.Udder Attach | | | | | | 2.54 Tight |
| R. Udder Height | | | | | | 2.52 Very High |
| Udder Support | | | | | | 1.01 Strong |
| Udder Depth | | | | | | 1.44 Shallow |
| F.Teat Placement | | | | | | 1.75 Close |
| Teat Length | | | | | | -0.37 Shorter |
| R.Teat Placement | | | | | | 1.22 Close |
| Teat Pos Side | | | | | | 0.51 Apart |
| Locomotion | | | | | | 2 Excellent |

Daughters in Herds | 0 Dtrs 0 Herds 53% Rel

| | | | | | |
|---------------------|------|----------|-----------------|---------|-----------|
| Fertility Index | 3.5 | Improver | Condition Score | -0.16 | Low |
| Lifespan | 216 | Improver | Maintenance | 9 | High |
| Direct Calving Ease | -0.3 | Average | Calf Survival | 1.3 | Improver |
| SCC | -19 | Improver | Dairy Carcase | 0.2 | Improver |
| Mastitis | -2.0 | Improver | Milking Speed | 0.72 | Improver |
| TB Advantage | 1.8 | Improver | Temperament | 1.14 | Excellent |
| Lameness Adv | 1.1 | Improver | B/K Casein | A2A2/AA | |

Type Data supplied by Holstein UK

Production and Fitness data supplied by AHDB Dairy

PRODUCTION DTRS 0 HERDS 0 | Dec 2019 | SOURCE GBR

| Milk Kgs | Fat Kgs | Prot Kgs | £SCI | PLI £520 |
|----------|---------|----------|------|-----------|
| 465 | 26.9 | 17.6 | 248 | |
| Rel% | Fat% | Prot% | £ACI | £PLI Rel% |
| 69 | 0.1 | 0.03 | 402 | 66 |

| | -2 | -1 | 0 | 1 | 2 | |
|------------------|----|----|---|---|---|----------------|
| UK Type Merit | | | | | | 1.91 Excellent |
| UK Udder Comp | | | | | | 1.52 Excellent |
| UK Feet and Legs | | | | | | 1.61 Excellent |
| Stature | | | | | | 0.78 Taller |
| Chest Width | | | | | | 0.77 Wide |
| Body Depth | | | | | | 0.17 Average |
| Angularity | | | | | | -0.26 Coarse |
| Rump Angle | | | | | | 1.5 Lower |
| Rump Width | | | | | | 0.42 Wide |
| Rear Leg Side | | | | | | -1 Straight |
| Foot Angle | | | | | | 1.15 Steep |
| F.Udder Attach | | | | | | 1.3 Tight |
| R. Udder Height | | | | | | 1.69 Very High |
| Udder Support | | | | | | 1.16 Strong |
| Udder Depth | | | | | | 1.4 Shallow |
| F.Teat Placement | | | | | | 0.6 Close |
| Teat Length | | | | | | 0.18 Longer |
| R.Teat Placement | | | | | | 0.51 Close |
| Teat Pos Side | | | | | | 0.74 Apart |
| Locomotion | | | | | | 1.79 Excellent |

Daughters in Herds | 0 Dtrs 0 Herds 58% Rel

| | | | | | |
|---------------------|------|----------|-----------------|---------|-----------|
| Fertility Index | 4.6 | Improver | Condition Score | 1.25 | High |
| Lifespan | 134 | Improver | Maintenance | 13 | High |
| Direct Calving Ease | -0.4 | Harder | Calf Survival | 0.9 | Improver |
| SCC | -20 | Improver | Dairy Carcase | -0.1 | Average |
| Mastitis | -1.0 | Average | Milking Speed | 0.52 | Improver |
| TB Advantage | 1.4 | Improver | Temperament | 0.55 | Excellent |
| Lameness Adv | 1.3 | Improver | B/K Casein | A1A1/BE | |

Type Data supplied by Holstein UK

Production and Fitness data supplied by AHDB Dairy



EDG Outsiders **SHOOTER**
Outsiders x Silver x Numero Uno



3RD DAM DE-SU 199 VG85

HBN: HOL840003132353008 AI Code: H05773
Dam: Edg Cinergy Silver 32098-ET
2nd Dam: Edg Ct Uno Cinergy-ET GP81
3rd Dam: De-Su 199-ET VG85

PRODUCTION DTRS 0 HERDS 0 | Dec 2019 | SOURCE GBR

| Milk Kgs | Fat Kgs | Prot Kgs | £SCI | PLI £609 |
|----------|---------|----------|------|-----------|
| 1022 | 50 | 30.7 | 228 | |
| Rel% | Fat% | Prot% | £ACI | £PLI Rel% |
| 67 | 0.11 | -0.03 | 428 | 64 |

| UK Type Merit | 1.91 | Excellent | | |
|------------------|-------|-----------|--|--|
| UK Udder Comp | 0.94 | Excellent | | |
| UK Feet and Legs | 1.41 | Excellent | | |
| Stature | 1.47 | Taller | | |
| Chest Width | 1.76 | Wide | | |
| Body Depth | 1.31 | Deep | | |
| Angularity | 0.61 | Open Rib | | |
| Rump Angle | 0.34 | Lower | | |
| Rump Width | 0.77 | Wide | | |
| Rear Leg Side | -1.97 | Straight | | |
| Foot Angle | 1.07 | Steep | | |
| F.Udder Attach | 0.6 | Tight | | |
| R. Udder Height | 1.19 | Very High | | |
| Udder Support | 1.01 | Strong | | |
| Udder Depth | -0.36 | Deep | | |
| F.Teat Placement | 1.23 | Close | | |
| Teat Length | 1.1 | Longer | | |
| R.Teat Placement | 0.88 | Close | | |
| Teat Pos Side | 0.38 | Apart | | |
| Locomotion | 1.74 | Excellent | | |

Daughters in Herds | 0 Dtrs 0 Herds 55% Rel

| Fertility Index | 2.9 | Improver | Condition Score | 0.89 High |
|---------------------|------|----------|-----------------|---------------|
| Lifespan | 103 | Improver | Maintenance | 25 High |
| Direct Calving Ease | -0.2 | Average | Calf Survival | 0.6 Improver |
| SCC | -4 | Improver | Dairy Carcase | 1.0 Improver |
| Mastitis | 2.0 | Non Imp | Milking Speed | 0.72 Improver |
| TB Advantage | 0.6 | Improver | Temperament | 0.23 Average |
| Lameness Adv | 1.5 | Improver | B/K Casein | A2A2/AB |

Type Data supplied by Holstein UK

Production and Fitness data supplied by AHDB Dairy



De-Su Spring **SILVERADO**
Spring x Supersire x Man-O-Man



HBN: HOL840003130010408 AI Code: H05194
Dam: De-Su Supersire 3349 ET VG86
2nd Dam: Clear-Echo M-O-M 2150 ET VG87
3rd Dam: Clear-Echo 822 Ramo 1200-ET EX94 2E

PRODUCTION DTRS 0 HERDS 0 | Dec 2019 | SOURCE GBR

| Milk Kgs | Fat Kgs | Prot Kgs | £SCI | PLI £640 |
|----------|---------|----------|------|-----------|
| 851 | 43.3 | 30.4 | 268 | |
| Rel% | Fat% | Prot% | £ACI | £PLI Rel% |
| 69 | 0.11 | 0.03 | 472 | 66 |

| UK Type Merit | 2.65 | Excellent | | |
|------------------|-------|-----------|--|--|
| UK Udder Comp | 1.73 | Excellent | | |
| UK Feet and Legs | 1.28 | Excellent | | |
| Stature | 1.72 | Taller | | |
| Chest Width | 0.88 | Wide | | |
| Body Depth | 0.77 | Deep | | |
| Angularity | 1.45 | Open Rib | | |
| Rump Angle | -0.05 | Higher | | |
| Rump Width | 0.88 | Wide | | |
| Rear Leg Side | 0.14 | Sickled | | |
| Foot Angle | 0.07 | Steep | | |
| F.Udder Attach | 1.21 | Tight | | |
| R. Udder Height | 1.78 | Very High | | |
| Udder Support | 1.36 | Strong | | |
| Udder Depth | 1.54 | Shallow | | |
| F.Teat Placement | 0.38 | Close | | |
| Teat Length | -0.07 | Shorter | | |
| R.Teat Placement | 1.07 | Close | | |
| Teat Pos Side | 0.83 | Apart | | |
| Locomotion | 1.59 | Excellent | | |

Daughters in Herds | 0 Dtrs 0 Herds 58% Rel

| Fertility Index | 6.5 | Improver | Condition Score | -0.42 Low |
|---------------------|------|----------|-----------------|--------------|
| Lifespan | 100 | Improver | Maintenance | 19 High |
| Direct Calving Ease | -2.4 | Harder | Calf Survival | 2.0 Improver |
| SCC | -2 | Improver | Dairy Carcase | 1.2 Improver |
| Mastitis | 0.0 | Average | Milking Speed | 0.20 Average |
| TB Advantage | 1.3 | Improver | Temperament | 0.23 Average |
| Lameness Adv | 2.3 | Improver | B/K Casein | A1A2/BB |

Type Data supplied by Holstein UK

Production and Fitness data supplied by AHDB Dairy



Cogent **SUPERSHOT**
Supersire x Superstition x Shottle



DTR LONGMOOR DKR ILARY P VG88

HBN: HOLNLD000755898903 AI Code: H02881
Dam: Rose Supershot VG88
2nd Dam: RC Classic VG87
3rd Dam: Clas Touch VG86

PRODUCTION DTRS 668 HERDS 155 | Dec 2019 | SOURCE ITB

| Milk Kgs | Fat Kgs | Prot Kgs | £SCI | PLI £554 |
|----------|---------|----------|------|-----------|
| 1263 | 12.6 | 30 | 196 | |
| Rel% | Fat% | Prot% | £ACI | £PLI Rel% |
| 99 | -0.41 | -0.12 | 375 | 96 |

| UK Type Merit | 1.3 | Excellent | | |
|------------------|-------|-----------|--|--|
| UK Udder Comp | 1.06 | Excellent | | |
| UK Feet and Legs | 1.10 | Excellent | | |
| Stature | 0.25 | Average | | |
| Chest Width | 1.28 | Wide | | |
| Body Depth | -0.55 | Shallow | | |
| Angularity | -0.62 | Coarse | | |
| Rump Angle | 0.56 | Lower | | |
| Rump Width | 0.77 | Wide | | |
| Rear Leg Side | 0.37 | Sickled | | |
| Foot Angle | -0.1 | Low | | |
| F.Udder Attach | 1.32 | Tight | | |
| R. Udder Height | 0.48 | Very High | | |
| Udder Support | 0.55 | Strong | | |
| Udder Depth | 0.59 | Shallow | | |
| F.Teat Placement | 0.61 | Close | | |
| Teat Length | 0.92 | Longer | | |
| R.Teat Placement | 0.54 | Close | | |
| Teat Pos Side | -0.05 | Close | | |
| Locomotion | 1.32 | Excellent | | |

Source ITB | Daughters in Herds | 361 Dtrs 103 Herds 96% Rel

| Fertility Index | 6.6 | Improver | Condition Score | 1.23 High |
|---------------------|------|----------|-----------------|----------------|
| Lifespan | 152 | Improver | Maintenance | 12 High |
| Direct Calving Ease | -0.2 | Average | Calf Survival | 1.1 Improver |
| SCC | -27 | Improver | Dairy Carcase | 3.6 Improver |
| Mastitis | -3.0 | Improver | Milking Speed | 0.00 Average |
| TB Advantage | 1.4 | Improver | Temperament | 1.01 Excellent |
| Lameness Adv | 2.7 | Improver | B/K Casein | A1A2/BE |

Type Data supplied by Holstein UK

Production and Fitness data supplied by AHDB Dairy



Endco **SUPREME**
Cashflow x Platinum x Sudan



HBN: HOL840003133064316 AI Code: H04512
Dam: Vieuxsaule Platinum Shiras ET GP82
2nd Dam: Vieuxsaule Sudan Karen VG88
3rd Dam: Vieuxsaule Bolton Halia VG87

PRODUCTION DTRS 0 HERDS 0 | Dec 2019 | SOURCE GBR

| Milk Kgs | Fat Kgs | Prot Kgs | £SCI | PLI £694 |
|----------|---------|----------|------|-----------|
| 759 | 29.5 | 29 | 318 | |
| Rel% | Fat% | Prot% | £ACI | £PLI Rel% |
| 68 | 0 | 0.05 | 519 | 65 |

| UK Type Merit | 1.81 | Excellent | | |
|------------------|-------|-----------|--|--|
| UK Udder Comp | 1.68 | Excellent | | |
| UK Feet and Legs | 1.04 | Excellent | | |
| Stature | 0.55 | Taller | | |
| Chest Width | -0.1 | Narrow | | |
| Body Depth | -0.25 | Average | | |
| Angularity | 0.18 | Open Rib | | |
| Rump Angle | -0.01 | Higher | | |
| Rump Width | 0.12 | Wide | | |
| Rear Leg Side | -0.44 | Straight | | |
| Foot Angle | 0.16 | Steep | | |
| F.Udder Attach | 1.41 | Tight | | |
| R. Udder Height | 1.49 | Very High | | |
| Udder Support | 1.11 | Strong | | |
| Udder Depth | 1.12 | Shallow | | |
| F.Teat Placement | 1.05 | Close | | |
| Teat Length | -0.34 | Shorter | | |
| R.Teat Placement | 1.1 | Close | | |
| Teat Pos Side | 0.45 | Apart | | |
| Locomotion | 1.09 | Excellent | | |

Daughters in Herds | 0 Dtrs 0 Herds 55% Rel

| Fertility Index | 2.0 | Improver | Condition Score | 0.37 High |
|---------------------|------|----------|-----------------|----------------|
| Lifespan | 179 | Improver | Maintenance | 4 High |
| Direct Calving Ease | -0.7 | Harder | Calf Survival | 0.3 Improver |
| SCC | -32 | Improver | Dairy Carcase | 0.6 Improver |
| Mastitis | -4.0 | Improver | Milking Speed | -0.02 Average |
| TB Advantage | 1.9 | Improver | Temperament | 0.76 Excellent |
| Lameness Adv | 2.4 | Improver | B/K Casein | A2A2/AB |

Type Data supplied by Holstein UK

Production and Fitness data supplied by AHDB Dairy



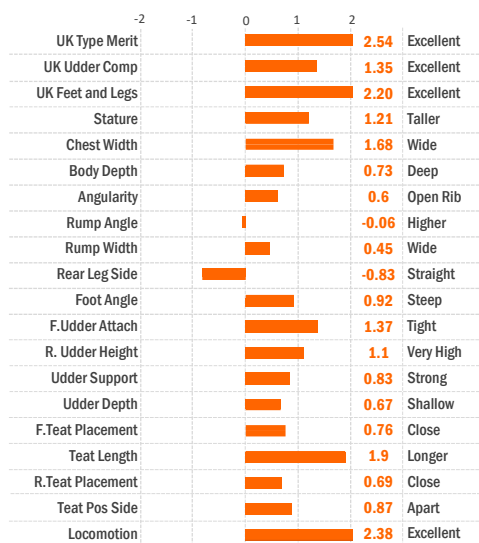
Hartford RUBI-TAZ
Rubicon x Altaoak x Robust



HBN: HOL840003134167086 AI Code: H05672
Dam: No-Fla Oak Takima 37199 VG85
2nd Dam: No-Fla Robust Jami 32226
3rd Dam: No-Fla Ramos Haven 20328 EX91

PRODUCTION DTRS 0 HERDS 0 | Dec 2019 | SOURCE GBR

| Milk Kgs | Fat Kgs | Prot Kgs | £SCI | PLI £606 |
|----------|---------|----------|------|-----------|
| 874 | 40.5 | 26.2 | 239 | |
| Rel% | Fat% | Prot% | £ACI | £PLI Rel% |
| 68 | 0.07 | -0.02 | 428 | 65 |



Daughters in Herds | 0 Dtrs 0 Herds 58% Rel

| | | | | | |
|---------------------|------|----------|-----------------|---------|----------|
| Fertility Index | 3.9 | Improver | Condition Score | 1.16 | High |
| Lifespan | 149 | Improver | Maintenance | 21 | High |
| Direct Calving Ease | -0.6 | Harder | Calf Survival | 0.1 | Improver |
| SCC | -12 | Improver | Dairy Carcase | 0.3 | Improver |
| Mastitis | -1.0 | Average | Milking Speed | 0.89 | Improver |
| TB Advantage | -0.1 | Average | Temperament | 0.42 | Average |
| Lameness Adv | 1.6 | Improver | B/K Casein | A1A1/EE | |

Type Data supplied by Holstein UK

Production and Fitness data supplied by AHDB Dairy



Mr Farnear Helix TWITCH
Helix x Delta x Numero Uno

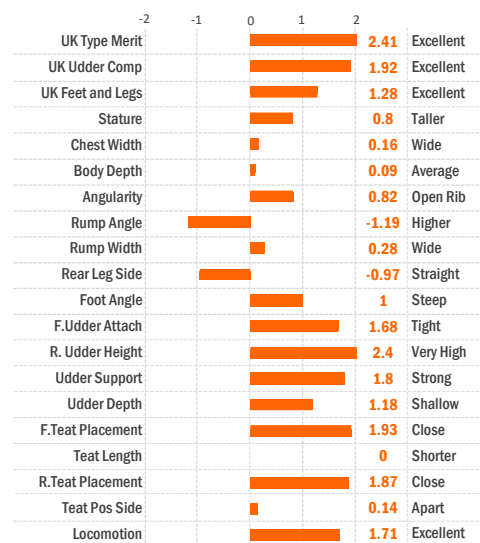


MGD EDG TRAC UNO TRUDY 2036 VG85

HBN: HOL840003132353302 AI Code: H05654
Dam: Ms Farnear Trudy Thyme ET VG86
2nd Dam: Edg Trac Uno Trudy 2036-ET VG85
3rd Dam: Tranquillity Ac Dreary Trac-ET VG85

PRODUCTION DTRS 0 HERDS 0 | Dec 2019 | SOURCE GBR

| Milk Kgs | Fat Kgs | Prot Kgs | £SCI | PLI £771 |
|----------|---------|----------|------|-----------|
| 949 | 44.9 | 29.7 | 390 | |
| Rel% | Fat% | Prot% | £ACI | £PLI Rel% |
| 68 | 0.09 | -0.01 | 607 | 64 |



Daughters in Herds | 0 Dtrs 0 Herds 56% Rel

| | | | | | |
|---------------------|------|----------|-----------------|---------|-----------|
| Fertility Index | 11.1 | Improver | Condition Score | -0.11 | Low |
| Lifespan | 149 | Improver | Maintenance | 7 | High |
| Direct Calving Ease | -0.3 | Average | Calf Survival | 1.0 | Improver |
| SCC | -15 | Improver | Dairy Carcase | 1.9 | Improver |
| Mastitis | -1.0 | Average | Milking Speed | 0.91 | Improver |
| TB Advantage | 0.7 | Improver | Temperament | 1.11 | Excellent |
| Lameness Adv | 1.6 | Improver | B/K Casein | A1A1/AB | |

Type Data supplied by Holstein UK

Production and Fitness data supplied by AHDB Dairy



TJR Everest WATSON
Everest x Rubicon x Supersire

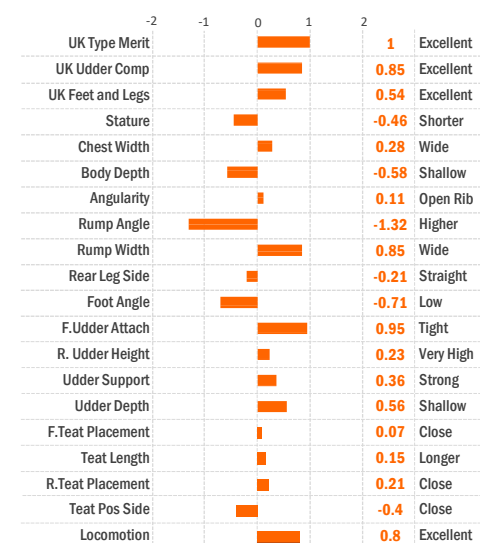


DAM SYNERGY RUBICON DREW GP83

HBN: HOL840003128013733 AI Code: H05655
Dam: Synergy Rubicon Drew GP83
2nd Dam: Synergy Supsre Strategy-ET VG88
3rd Dam: Sure-View Oman Shimmer-ET VG87

PRODUCTION DTRS 0 HERDS 0 | Dec 2019 | SOURCE GBR

| Milk Kgs | Fat Kgs | Prot Kgs | £SCI | PLI £715 |
|----------|---------|----------|------|-----------|
| 828 | 46.1 | 26 | 355 | |
| Rel% | Fat% | Prot% | £ACI | £PLI Rel% |
| 67 | 0.16 | -0.01 | 568 | 64 |



Daughters in Herds | 0 Dtrs 0 Herds 55% Rel

| | | | | | |
|---------------------|------|----------|-----------------|---------|-----------|
| Fertility Index | 5.1 | Improver | Condition Score | 0.71 | High |
| Lifespan | 195 | Improver | Maintenance | -3 | Low |
| Direct Calving Ease | -0.6 | Harder | Calf Survival | -0.1 | Non Imp |
| SCC | -19 | Improver | Dairy Carcase | 1.4 | Improver |
| Mastitis | -1.0 | Average | Milking Speed | 0.99 | Improver |
| TB Advantage | 0.0 | Average | Temperament | 0.51 | Excellent |
| Lameness Adv | 1.7 | Improver | B/K Casein | A2A2/BB | |

Type Data supplied by Holstein UK

Production and Fitness data supplied by AHDB Dairy



T-Gen-AC Jedi YAGER HH5
Jedi x Yoder x Day

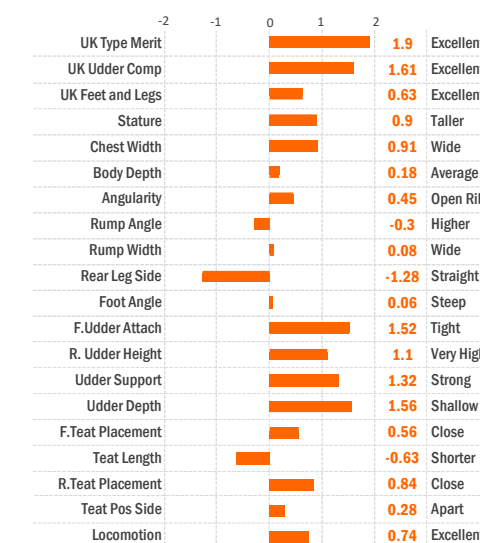


GDAM MS AMERICA DIXIE ET VG85

HBN: HOL840003132353023 AI Code: H05523
Dam: T-Gen-Ac Dixie Yahya ET
2nd Dam: Ms America Dixie ET VG85
3rd Dam: Seagull-Bay Miss America ET EX91

PRODUCTION DTRS 0 HERDS 0 | Dec 2019 | SOURCE GBR

| Milk Kgs | Fat Kgs | Prot Kgs | £SCI | PLI £768 |
|----------|---------|----------|------|-----------|
| 722 | 32.5 | 31.1 | 432 | |
| Rel% | Fat% | Prot% | £ACI | £PLI Rel% |
| 68 | 0.05 | 0.09 | 642 | 65 |



Daughters in Herds | 0 Dtrs 0 Herds 56% Rel

| | | | | | |
|---------------------|------|----------|-----------------|---------|-----------|
| Fertility Index | 14.7 | Improver | Condition Score | 0.63 | High |
| Lifespan | 152 | Improver | Maintenance | 13 | High |
| Direct Calving Ease | -0.8 | Harder | Calf Survival | 2.0 | Improver |
| SCC | -17 | Improver | Dairy Carcase | 0.9 | Improver |
| Mastitis | 0.0 | Average | Milking Speed | 0.79 | Improver |
| TB Advantage | 0.9 | Improver | Temperament | 0.87 | Excellent |
| Lameness Adv | 1.8 | Improver | B/K Casein | A1A2/BB | |

Type Data supplied by Holstein UK

Production and Fitness data supplied by AHDB Dairy

Precision**REPRO**

THE WHOLE HERD FERTILITY SERVICE

Increasing
conception rates by
20% can yield £65
per cow per year.

Precision**REPRO** is the reproductive solution delivering next generation, optimum herd performance. Consistency, accuracy and cutting-edge technology combine to increase herd productivity and farm profits. Precision**REPRO** takes the effort out of the heat detection and inseminating making the Cogent Ultimate Breeding Strategy an efficient and profitable journey for the customer, generating accumulative genetic gain and profit by increasing efficiencies of breeding.

Precision**REPRO**
alone could save
you £82 per cow
per year

NORTH TEAM

| | |
|-------------------------------------|--------------|
| Ian Plews Regional Sales Manager | 07855 506136 |
| Alan Robson | 07554 401234 |
| Andrew Howie | 07977 281073 |
| John Howie | 07977 281074 |
| Jenny Murtagh-Hunt | 07736 291226 |
| Richard Laphorne | 07794 657040 |
| Michael Stobbart | 07889 807969 |

CENTRAL TEAM

| | |
|--------------------------------------|--------------|
| Andy Hales Regional Sales Manager | 07818 573379 |
| David Heath | 07791 045427 |
| Dafydd Williams | 07719 524078 |
| Jemma Lindley | 07710 093064 |
| Phil Wynn | 07889 538859 |
| Sara Etell | 07711 590979 |
| Robert Davies | 07939 333141 |
| Glyn Williams | 07866 126072 |

NORTHERN IRELAND

| | |
|--|--------------|
| Ashley Fleming Regional Sales Manager | 07775 561823 |
| Adrian McPhillips | 07919 553968 |
| Edwin Black | 07710 968305 |
| Stephen Shanks | 07972 704738 |
| Jamie Sproule | 07827 304010 |
| Jonathan Kelso | 07719 524123 |
| Paul Murtagh | 07775 935221 |

COGENT PRECISION MATCH EVALUATORS

| | |
|---------------------------|--------------|
| Christina Straathof North | 07989 219683 |
| Amy Hall Brown South | 07718 210066 |
| Katie Evans South | 07827 893365 |
| Kevin Rickard Wales | 07800 534621 |
| Jamie Sproule N. Ireland | 07827 304010 |

SOUTH TEAM

| | |
|--|--------------|
| Graham Higgott Regional Sales Manager | 07787 283117 |
| Chris Horton | 07813723677 |
| David Willcox | 07827 243249 |
| Lisa Hopwood | 07772 976935 |
| Martin Ley | 07818 573481 |
| Amanda Clements | 07711 593941 |
| Mike Potter | 07772 202045 |
| Sarah Robertson | 07519 120676 |
| Frankie Connelly | 07531 244135 |

COGENT CYMRU

| | |
|--|--------------|
| Graham Higgott Regional Sales Manager | 07787 283117 |
| Cogent Cymru Office Vikki Parfitt | 01495 753555 |
| Sian Jones | 07972 534303 |
| Kevin Rickard | 07800 534621 |
| John Williams | 07817 232373 |
| Will Tucker | 07719 511721 |

INTERNAL SALES

| | |
|--|--------------|
| Jane Winters Internal Sales Manager | 01829 773435 |
| Catherine Perelli | 01829 773425 |
| Carla Madeley | 01829 773421 |
| Emma Fleming | 01829 773493 |
| Lisa Boughey | 01829 773420 |
| Olivia Butler | 01829 773426 |
| Jodie Lumsden | 01829 773422 |

COGENT PRECISION SERVICES

| | |
|--|--------------|
| Gary Pleavin Precision Operations Manager | 07841 340361 |
| Michael Jones Precision Technical Manager | 07584 238635 |

CONTACTS

FREEPHONE: 0800 783 7258

Precision

THE VERY BEST IN HEALTH AND FERTILITY SOLUTIONS

SexedULTRA 4M™

Over **90%** gender accuracy

PrecisionDNA

High density genomic testing

Mastitis
SCC
CCI
Fertility

PrecisionMAP

Genetic auditing tool exclusive to customers

Profitability
Milk
Protein
Fat
Lifespan

PrecisionMATCH

Industry leading mating programme

PrecisionREPRO

Whole herd fertility service

With our extensive and globally renowned bull portfolio and our unique Precision package, Cogent have the solution to maximise breeding efficiencies and increase genetic gain. Cogent use the very best of technology to simplify your breeding from decision making to insemination whilst gaining profit per pregnancy.

BREEDING INNOVATION



Call Freephone: **0800 783 7258** for more information

www.cogentuk.com