

BEEF IMPACT

2019 CATALOGUE



BE PROFITABLE. BE COGENT



www.cogentuk.com





Be Profitable.

Be Cogent.

Male
SexedULTRA 4M™



“ Ultimately, our aim is to increase the quality and value of the beef going out of the unit, and male sexed beef semen is the key to our success.

Easom & Sons
Broom House Farm

With an ever-increasing proportion of UK beef supply coming from dairy herds, it is important that dairy farmers are able to select bulls which benefit both them and the beef supply chain.

Cogent Beef Impact index (£CBI) has been designed purely with the dairy farmer in mind to highlight key strengths of Cogent sires and provides the added average financial value each sire can deliver per calving, categorised by breed type.

In order to maximise the value of every pregnancy on the farm, Cogent has introduced MALE SEXEDULTRA 4M, a market leading sexed semen product with improved conception rates.



ROYALTY

Sire is eligible for royalty fee for any progeny that is registered as pedigree.



UK ONLY

Sire is not eligible for export.



NUMBER OF SURVEYS

An easy-to-use guide on the reliability of calf data, collected through Beef Calving Surveys.

UNDER SURVEY

Sire currently under test within the dairy herd.

NOT FOR PEDIGREE USE

Progeny born from this sire cannot be registered as pedigree, for commercial use only.

EARLY LACTATION ONLY

It is recommended that this sire is used in early lactation cows to avoid problems associated with older cows at the point of calving.



PROVEN RESULTS

Highly reliable proven sire with data from 100 + Calving Surveys collected from dairy herds.

ABERDEEN-ANGUS

- 5 QUAKER HILL FARM BLACK ONYX
- 6 OAKCHURCH DE ADMIRAL
- 7 QUAKER HILL DEAD CENTER
- 8 LINTON GILBERTINES DUBLINER
- 9 DUNLOUISE EARLSTON
- 10 MELVIEW GET ITON
- 11 WEETON PANTHER
- 12 THRUNTON PICADOR
- 13 LINTON GILBERTINES PREACHER
- 14 BLACKHAUGH TITUS
- 15 THOMAS TOUR OF DUTY

BRITISH BLUE

- 16 MAIDENLANDS FORCE
- 17 AUCHENLAY HITMAN
- 18 SPRINGHILL IMPROVEMENT
- 19 BOROSIDE IRONMAN
- 20 TANAT JACK DANIELS
- 21 KELOWNA JIMBO
- 22 AUCHENLAY JUDGE
- 23 GRAYMAR KA CHING
- 24 KERSEY KARATE
- 25 KERSEY KINGPIN
- 26 KURTEX D'AUBRY
- 27 KERSEY LINCHPIN
- 28 CRACKLEY BANK LORD

CULARD CHAROLAIS

- 29 GOLF
- 30 ERKI
- 30 UDEFIX

CHAROLAIS

- 31 WHITECLIFFE JAMES

HEREFORD

- 32 NETHERHALL 1 OZ DAFFY
- 33 NETHERHALL 1 JACK
- 33 GOULDINGPOLL 1 GOLD SPICE

LIMOUSIN

- 34 TOMSCHOICE JET

YOUNG SIREs

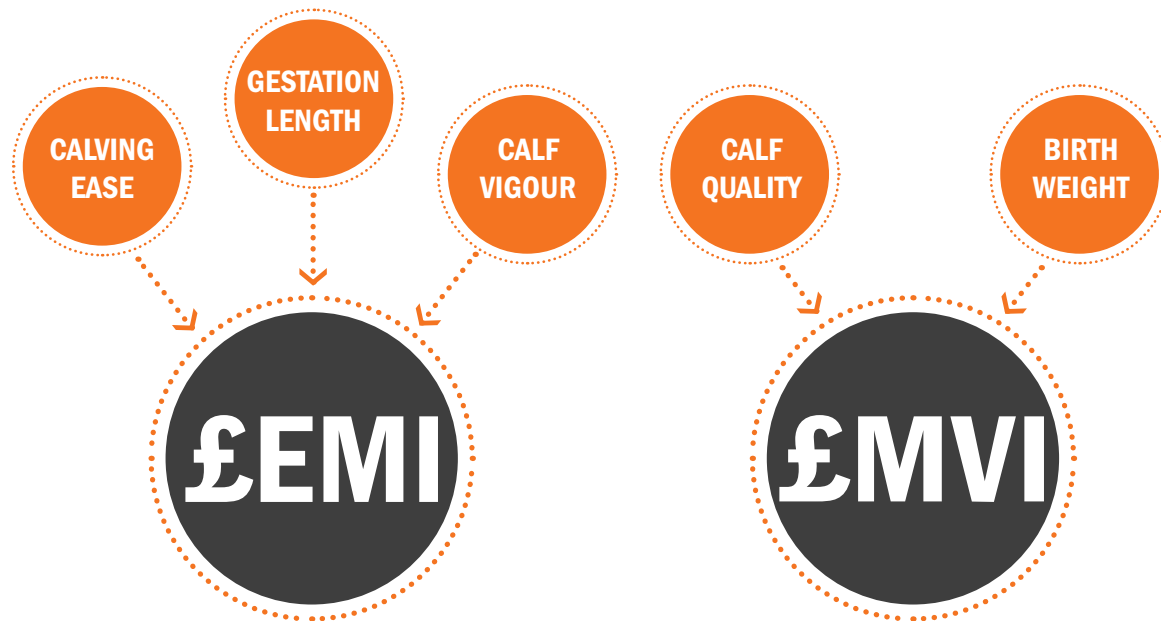
ABERDEEN-ANGUS

- 36 MELVIEW GRAND TIMING
- 36 MELVIEW GREGOR

BRITISH BLUE

- 37 KELOWNA LUCAS
- 37 SILVERWOOD MAINMAN

IMPACT EXPLAINED...



EASE OF MANAGEMENT IMPACT

£EMI capitalises on live and vigorous calves born without assistance.

Selecting Cogent beef sires ranking highly for £EMI gives dairy cows the best chance to have a profitable lactation.

MARKET VALUE IMPACT

£MVI optimises values achieved for beef calves bred from the dairy herd. Using Cogent sires with a high £MVI will help increase prices achieved and reduce time taken for calves to reach optimum sale weights.

£CBI

COGENT BEEF IMPACT

£CBI combines both £EMI and £MVI to give an overall value each calf will benefit dairy farmers on average. High £CBI sires are well-rounded, providing the perfect combination of easily managed calves that achieve high sale prices.



Male
Sexed **ULTRA 4M**
Available*



Quaker Hill Farm **BLACK ONYX** 5Q11

Sire: Connealy Black Granite Dam: Wilks Blackcap OD82 Ear Tag: AAA18463791 AI Code: AA1579

Figures based on American Angus Association EDPs (26/10/18)

CALVING EASE (%)	Harder	7	14.0	Easier
BIRTH WEIGHT (KG)	Lighter	1.3	-0.6	Heavier
WEANING WEIGHT (KG)	Lighter	52	87.0	Heavier

*Only available in Male SexedULTRA 4M

ABERDEEN-ANGUS SIRE AVAILABLE IN THE UK WITH MALE SEXEDULTRA 4M SEMEN.

Quaker Hill Farm Black Onyx is a uniquely bred high genomic sire that ticks all the boxes. He is one of the few Black Granite sons that combines calving ease and growth into one. His dam is full sister to Quaker Hill Rampage, one of the top performance sires in the Aberdeen Angus breed. With proven performance genetics stacked throughout his elite pedigree he ranks in the top 1% of the breed for \$W and \$B. Black Onyx will produce easy born calves that develop and grow at an exceptional rate.



£63.55 **£75.91** £12.36
EMI — **CBI** — MVI

Oakchurch **DE ADMIRAL** P164

Sire: Ardrossan Admiral A2 Dam: Oakchurch Dame M093 Ear Tag: UK313622 200164 AI Code: AA1348

GESTATION LENGTH (D)	Longer	285		279	Shorter
CALVING EASE (%)	Harder	92		98.6	Easier
CALF VIGOUR (UNITS)	- Vigorous	1		1.33	+ Vigorous
CALF QUALITY (%)	Poorer	80		86.1	Excellent
BIRTH WEIGHT (KG)	Lighter	0		-0.25	Heavier

LATEST PROGENY PICTURES



£80.24 **£99.50** £19.26
EMI — **CBI** — MVI

Quaker Hill **DEAD CENTER**

Sire: Exar Denver 2002B Dam: Quaker Hill Blackcap OA32 Ear Tag: US4017831035 AI Code: AA1369

GESTATION LENGTH (D)	Longer	285		278	Shorter
CALVING EASE (%)	Harder	92		99.0	Easier
CALF VIGOUR (UNITS)	- Vigorous	1		1.67	+ Vigorous
CALF QUALITY (%)	Poorer	80		92.7	Excellent
BIRTH WEIGHT (KG)	Lighter	0		-0.92	Heavier

LATEST PROGENY PICTURES





Male Sexed **ULTRA 4M** Available



£72.76

£96.01

£23.25

EMI

CBI

MVI

Linton Gilbertines **DUBLINER** R970
Sire: Linton Gilbertines Rowan K414 Dam: Linton Gilbertines Duchess Dixy K315 Ear Tag: UK560236200970 AI Code: AA1500

GESTATION LENGTH (D)	Longer	285		278	Shorter
CALVING EASE (%)	Harder	92		98.3	Easier
CALF VIGOUR (UNITS)	- Vigorous	1		1.33	+ Vigorous
CALF QUALITY (%)	Poorer	80		100.0	Excellent
BIRTH WEIGHT (KG)	Lighter	0		1.52	Heavier

LATEST PROGENY PICTURES



NEW



Male Sexed **ULTRA 4M** Available



£50.75

£55.14

£4.39

EMI

CBI

MVI

Dunlouse **EARLSTON** S629
Sire: Dunlouse Raider N504 Dam: Dunlouse Emerald F205 Ear Tag: UK540196200629 AI Code: AA1521

GESTATION LENGTH (D)	Longer	285		281	Shorter
CALVING EASE (%)	Harder	92		98.1	Easier
CALF VIGOUR (UNITS)	- Vigorous	1		1.67	+ Vigorous
CALF QUALITY (%)	Poorer	80		88.6	Excellent
BIRTH WEIGHT (KG)	Lighter	0		-0.44	Heavier

LATEST PROGENY PICTURES





£46.48

£66.98

£20.50

EMI — CBI — MVI

Melview GET IT ON s207

Sire: Tofts Date Time N125 Dam: Melview Gerri M099 Ear Tag: UK311688 700207 AI Code: AA1512

GESTATION LENGTH (D)	Longer	285		281	Shorter
CALVING EASE (%)	Harder	92		98.4	Easier
CALF VIGOUR (UNITS)	- Vigorous	1		1.88	+ Vigorous
CALF QUALITY (%)	Poorer	80		99.0	Excellent
BIRTH WEIGHT (KG)	Lighter	0		0.20	Heavier

LATEST PROGENY PICTURES



Male
Sexed **ULTRA 4M**
Available



£70.41

£76.56

£6.15

EMI — CBI — MVI

Weeton PANTHER s498

Sire: Bushs Strut 756 Dam: Frieso 6013 Prairie H019 Ear Tag: UK181671702498 AI Code: AA1540

GESTATION LENGTH (D)	Longer	285		279	Shorter
CALVING EASE (%)	Harder	92		99.0	Easier
CALF VIGOUR (UNITS)	- Vigorous	1		1.94	+ Vigorous
CALF QUALITY (%)	Poorer	80		89.0	Excellent
BIRTH WEIGHT (KG)	Lighter	0		-0.89	Heavier

LATEST PROGENY PICTURES





£44.19

£63.73

£19.54

EMI — CBI — MVI

Thrunton **PICADOR** N567

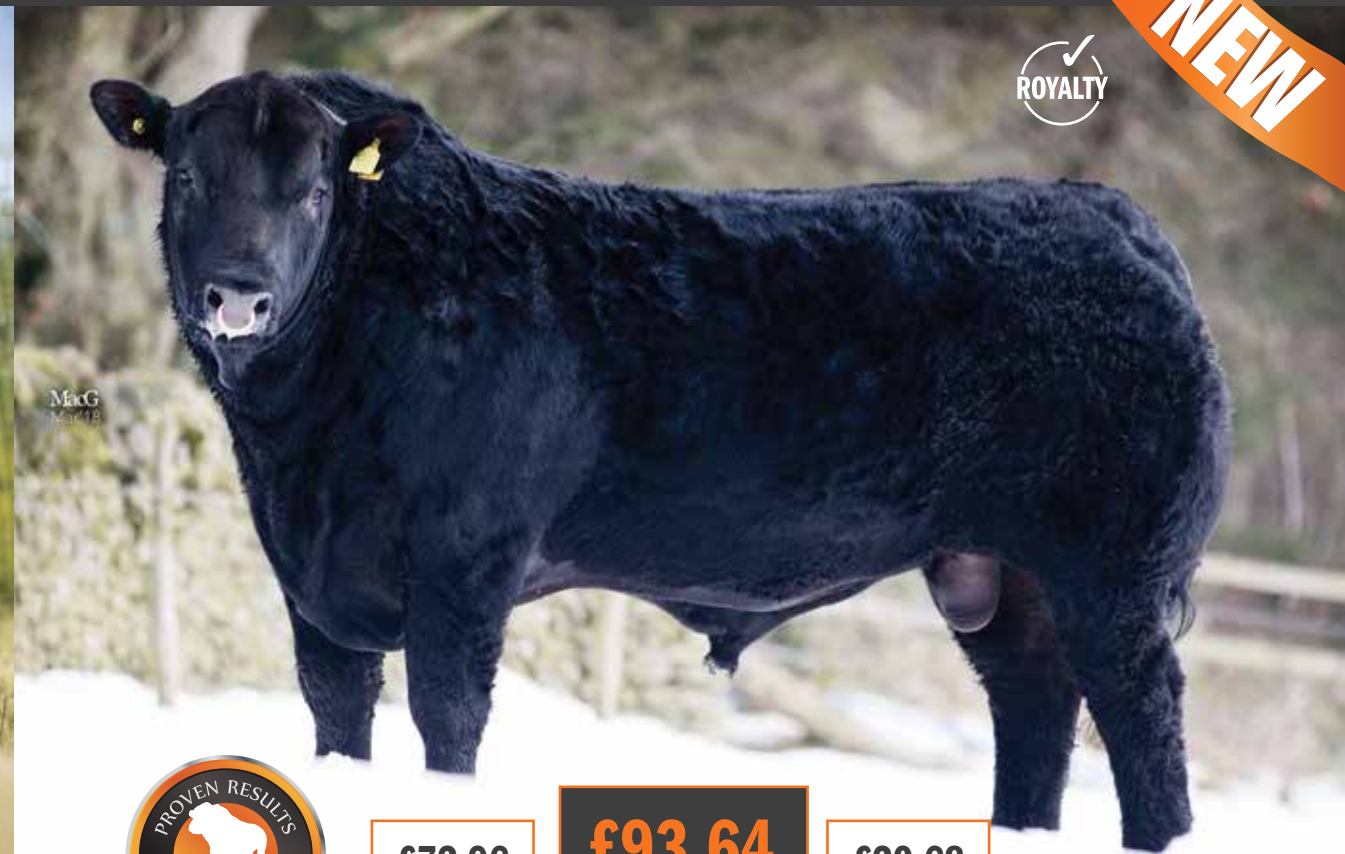
Sire: Netherallan Peter Pershore Dam: Thrunton Poppy G747 Ear Tag: UK106935 101567 AI Code: AA1367

GESTATION LENGTH (D)	Longer	285		281	Shorter
CALVING EASE (%)	Harder	92		94.1	Easier
CALF VIGOUR (UNITS)	- Vigorous	1		1.22	+ Vigorous
CALF QUALITY (%)	Poorer	80		94.1	Excellent
BIRTH WEIGHT (KG)	Lighter	0		0.22	Heavier

LATEST PROGENY PICTURES



NEW



£72.96

£93.64

£20.68

EMI — CBI — MVI

Linton Gilbertines **PREACHER** S088

Sire: Linton Gilbertines Jack Eric Dam: Linton Gilbertines Princess N780 Ear Tag: UK560236 101088 AI Code: AA1569

GESTATION LENGTH (D)	Longer	285		278	Shorter
CALVING EASE (%)	Harder	92		99.0	Easier
CALF VIGOUR (UNITS)	- Vigorous	1		1.17	+ Vigorous
CALF QUALITY (%)	Poorer	80		95.5	Excellent
BIRTH WEIGHT (KG)	Lighter	0		0.57	Heavier

LATEST PROGENY PICTURES





£51.29

£55.41

£4.12

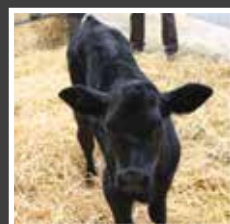
EMI — CBI — MVI

Blackhaugh **TITUS** P466

Sire: Blackhaugh Krocus L086 Dam: Blackhaugh Tibbie K031 Ear Tag: UK562121401466 AI Code: AA1491

GESTATION LENGTH (D)	Longer	285		281	Shorter
CALVING EASE (%)	Harder	92		98.4	Easier
CALF VIGOUR (UNITS)	- Vigorous	1		1.32	+ Vigorous
CALF QUALITY (%)	Poorer	80		83.6	Excellent
BIRTH WEIGHT (KG)	Lighter	0		-0.91	Heavier

LATEST PROGENY PICTURES



NEW



£49.70

£70.17

£20.47

EMI — CBI — MVI

Thomas **TOUR OF DUTY** 6419

Sire: R B Tour of Duty 177 Dam: Thomas Pride 31245 Ear Tag: US184637141981367 AI Code: AA1557

GESTATION LENGTH (D)	Longer	285		281	Shorter
CALVING EASE (%)	Harder	92		95.8	Easier
CALF VIGOUR (UNITS)	- Vigorous	1		1.22	+ Vigorous
CALF QUALITY (%)	Poorer	80		98.0	Excellent
BIRTH WEIGHT (KG)	Lighter	0		0.56	Heavier

LATEST PROGENY PICTURES





£29.20

£55.00

£25.80

EMI — CBI — MVI

EARLY LACTATION ONLY

Maidenlands **FORCE**

Sire: Navac Ultimo Dam: Maidenlands Wanda Ear Tag: UK104493 100372 AI Code: BB1261

GESTATION LENGTH (D)	Longer	285	<div></div>	282	Shorter
CALVING EASE (%)	Harder	92	<div></div>	94.2	Easier
CALF VIGOUR (UNITS)	- Vigorous	1	<div></div>	1.73	+ Vigorous
CALF QUALITY (%)	Poorer	80	<div></div>	95.4	Excellent
BIRTH WEIGHT (KG)	Lighter	0	<div></div>	1.88	Heavier
CALF COLOUR (%)	Light Blue Roan	80	<div></div>	87.0	Dark Blue Roan

LATEST PROGENY PICTURES



£44.87

£74.94

£30.07

EMI — CBI — MVI

EARLY LACTATION ONLY

Auchenlay **HITMAN**

Sire: Mountjoy Utopia Dam: Auchenlay Bianca Ear Tag: UK542740 500435 AI Code: BB1316

GESTATION LENGTH (D)	Longer	285	<div></div>	281	Shorter
CALVING EASE (%)	Harder	92	<div></div>	96.6	Easier
CALF VIGOUR (UNITS)	- Vigorous	1	<div></div>	1.54	+ Vigorous
CALF QUALITY (%)	Poorer	80	<div></div>	94.6	Excellent
BIRTH WEIGHT (KG)	Lighter	0	<div></div>	1.63	Heavier
CALF COLOUR (%)	Light Blue Roan	80	<div></div>	92.0	Dark Blue Roan

LATEST PROGENY PICTURES





£54.25

£75.14

£20.89

EMI — CBI — MVI

EARLY LACTATION ONLY

Springhill IMPROVEMENT

Sire: Springhill Fabulous Dam: Springhill Elsie Ear Tag: UK933262 903824 AI Code: BB1381

GESTATION LENGTH (D)	Longer	285		280	Shorter
CALVING EASE (%)	Harder	92		97.2	Easier
CALF VIGOUR (UNITS)	- Vigorous	1		1.51	+ Vigorous
CALF QUALITY (%)	Poorer	80		90.7	Excellent
BIRTH WEIGHT (KG)	Lighter	0		1.88	Heavier
CALF COLOUR (%)	Light Blue Roan	80		73.0	Dark Blue Roan

LATEST PROGENY PICTURES



£49.88

£69.46

£19.58

EMI — CBI — MVI

NOT FOR PEDIGREE USE
EARLY LACTATION ONLY

Boroside IRONMAN

Sire: Lotto VD Vloeikenshoeve Dam: Boherard Diamond Ear Tag: IE371479951294 AI Code: BB1432

GESTATION LENGTH (D)	Longer	285		281	Shorter
CALVING EASE (%)	Harder	92		98.9	Easier
CALF VIGOUR (UNITS)	- Vigorous	1		1.42	+ Vigorous
CALF QUALITY (%)	Poorer	80		91.7	Excellent
BIRTH WEIGHT (KG)	Lighter	0		1.36	Heavier
CALF COLOUR (%)	Light Blue Roan	80		94.0	Dark Blue Roan

LATEST PROGENY PICTURES





£20.31

£48.69

£28.38

EMI — CBI — MVI

EARLY LACTATION ONLY

Tanat **JACK DANIELS**

Sire: Harpon De L'Orgelot Dam: Whiterock Diamond Ear Tag: UK706191 100832 AI Code: BB1394

GESTATION LENGTH (D)	Longer	285		284	Shorter
CALVING EASE (%)	Harder	92		96.4	Easier
CALF VIGOUR (UNITS)	- Vigorous	1		1.46	+ Vigorous
CALF QUALITY (%)	Poorer	80		95.1	Excellent
BIRTH WEIGHT (KG)	Lighter	0		1.84	Heavier
CALF COLOUR (%)	Light Blue Roan	80		93.0	Dark Blue Roan

LATEST PROGENY PICTURES



£43.49

£61.37

£17.87

EMI — CBI — MVI

Male
Sexed **ULTRA 4M**
Available

Kelowna **JIMBO**

Sire: Bringlee Ecstasy Dam: Kelowna Claire Ear Tag: UK102530 100996 AI Code: BB1393

GESTATION LENGTH (D)	Longer	285		282	Shorter
CALVING EASE (%)	Harder	92		98.6	Easier
CALF VIGOUR (UNITS)	- Vigorous	1		1.35	+ Vigorous
CALF QUALITY (%)	Poorer	80		90.0	Excellent
BIRTH WEIGHT (KG)	Lighter	0		0.95	Heavier
CALF COLOUR (%)	Light Blue Roan	80		80.0	Dark Blue Roan

LATEST PROGENY PICTURES



NEW

Male
Sexed **ULTRA 4M**
Available

£40.42

£43.45

£3.03

NOT FOR PEDIGREE USE

EMI — CBI — MVI

Auchenlay **JUDGE**

Sire: Tamhorn Ethan. Dam: Auchenlay Eve Ear Tag: UK542740300461 AI Code: BB1464

GESTATION LENGTH (D)	Longer	285	<div></div>	283	Shorter
CALVING EASE (%)	Harder	92	<div></div>	99.0	Easier
CALF VIGOUR (UNITS)	- Vigorous	1	<div></div>	1.29	+ Vigorous
CALF QUALITY (%)	Poorer	80	<div></div>	79.6	Excellent
BIRTH WEIGHT (KG)	Lighter	0	<div></div>	-1.20	Heavier
CALF COLOUR (%)	Light Blue Roan	80	<div></div>	77.0	Dark Blue Roan

LATEST PROGENY PICTURES



£12.11

£36.32

£24.21

EARLY LACTATION ONLY
NOT FOR PEDIGREE USE
RED GENE CARRIER

EMI — CBI — MVI

Graymar **KA CHING**

Sire: Immense ET 0738 De Beuraing Dam: Graymar Glamour Girl Ear Tag: UK314034400059 AI Code: BB1435

GESTATION LENGTH (D)	Longer	285	<div></div>	285	Shorter
CALVING EASE (%)	Harder	92	<div></div>	96.1	Easier
CALF VIGOUR (UNITS)	- Vigorous	1	<div></div>	1.19	+ Vigorous
CALF QUALITY (%)	Poorer	80	<div></div>	92.3	Excellent
BIRTH WEIGHT (KG)	Lighter	0	<div></div>	3.10	Heavier
CALF COLOUR (%)	Light Blue Roan	80	<div></div>	74.0	Dark Blue Roan

LATEST PROGENY PICTURES




24

NEW


BRITISH BLUE

Male Sexed **ULTRA 4M** Available



MacG July 19

PROVEN RESULTS



PROVEN RESULTS

£59.76

£71.08

£11.32

EMI — **CBI** — MVI


NOT FOR PEDIGREE USE

25

NEW


BRITISH BLUE

Male Sexed **ULTRA 4M** Available



MacG July 19

PROVEN RESULTS



PROVEN RESULTS

£57.19

£63.60

£6.41

EMI — **CBI** — MVI




NOT FOR PEDIGREE USE

Kersey **KARATE**

Sire: Bringlee Ecstasy Dam: Kersey Frost Ear Tag: UK222596200980 AI Code: BB1440

GESTATION LENGTH (D)	Longer	285	<div></div>	280	Shorter
CALVING EASE (%)	Harder	92	<div></div>	99.1	Easier
CALF VIGOUR (UNITS)	- Vigorous	1	<div></div>	1.37	+ Vigorous
CALF QUALITY (%)	Poorer	80	<div></div>	80.2	Excellent
BIRTH WEIGHT (KG)	Lighter	0	<div></div>	1.40	Heavier
CALF COLOUR (%)	Light Blue Roan	80	<div></div>	90.0	Dark Blue Roan

LATEST PROGENY PICTURES






Kersey **KINGPIN**

Sire: Auchenlay Echo Dam: Blue Mist Blossom Ear Tag: UK222596701013 AI Code: BB1489

GESTATION LENGTH (D)	Longer	285	<div></div>	279	Shorter
CALVING EASE (%)	Harder	92	<div></div>	96.8	Easier
CALF VIGOUR (UNITS)	- Vigorous	1	<div></div>	1.41	+ Vigorous
CALF QUALITY (%)	Poorer	80	<div></div>	85.9	Excellent
BIRTH WEIGHT (KG)	Lighter	0	<div></div>	0.10	Heavier
CALF COLOUR (%)	Light Blue Roan	80	<div></div>	89.0	Dark Blue Roan

LATEST PROGENY PICTURES





£46.41 **£61.54** £15.13

EMI — **CBI** — MVI

NOT FOR PEDIGREE USE

KURTEX D'AUBRY

Sire: Bruegel D'au Chene Dam: Malvina Hof Ter Zilverberg Ear Tag: BE112495504 AI Code: BB1463

GESTATION LENGTH (D)	Longer	285	<div></div>	281	Shorter
CALVING EASE (%)	Harder	92	<div></div>	96.6	Easier
CALF VIGOUR (UNITS)	- Vigorous	1	<div></div>	1.64	+ Vigorous
CALF QUALITY (%)	Poorer	80	<div></div>	89.7	Excellent
BIRTH WEIGHT (KG)	Lighter	0	<div></div>	0.91	Heavier
CALF COLOUR (%)	Light Blue Roan	80	<div></div>	73.0	Dark Blue Roan

LATEST PROGENY PICTURES



NEW



£89.63 **£104.02** £14.39

EMI — **CBI** — MVI

NOT FOR PEDIGREE USE

Kersey LINCHPIN

Sire: Twyning Ash Ukulele Dam: Kersey Frost Ear Tag: UK222596101021 AI Code: BB1490

GESTATION LENGTH (D)	Longer	285	<div></div>	277	Shorter
CALVING EASE (%)	Harder	92	<div></div>	99.0	Easier
CALF VIGOUR (UNITS)	- Vigorous	1	<div></div>	1.81	+ Vigorous
CALF QUALITY (%)	Poorer	80	<div></div>	93.5	Excellent
BIRTH WEIGHT (KG)	Lighter	0	<div></div>	-0.37	Heavier
CALF COLOUR (%)	Light Blue Roan	80	<div></div>	94.0	Dark Blue Roan

LATEST PROGENY PICTURES





£86.02

£100.01

£13.99

EMI

CBI

MVI

NOT FOR PEDIGREE USE
RED GENE CARRIER



£35.16

£57.37

£22.21

EMI

CBI

MVI

NOT FOR PEDIGREE USE

Crackley Bank **LORD**

Sire: Immense ET 0738 De Beauraing Dam: Crackley Bank Baroness Ear Tag: UK314080500047 AI Code: BB1531

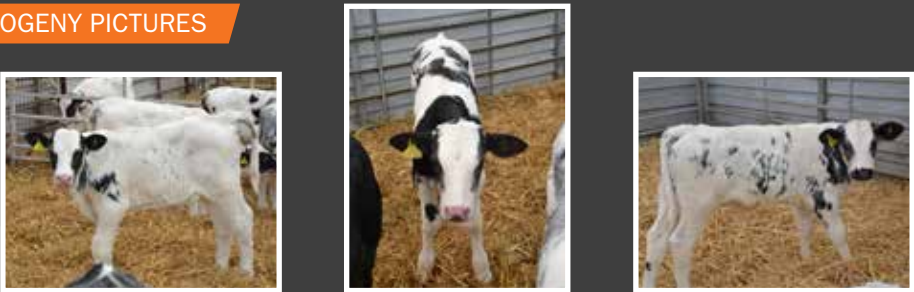
GESTATION LENGTH (D)	Longer	285	<div></div>	277	Shorter
CALVING EASE (%)	Harder	92	<div></div>	98.9	Easier
CALF VIGOUR (UNITS)	- Vigorous	1	<div></div>	1.54	+ Vigorous
CALF QUALITY (%)	Poorer	80	<div></div>	91.0	Excellent
BIRTH WEIGHT (KG)	Lighter	0	<div></div>	-0.35	Heavier
CALF COLOUR (%)	Light Blue Roan	80	<div></div>	80.0	Dark Blue Roan

GOLF

Sire: Vaudou Dam: Delta Ear Tag: FR4241721964 AI Code: CH4126

GESTATION LENGTH (D)	Longer	285	<div></div>	284	Shorter
CALVING EASE (%)	Harder	92	<div></div>	99.0	Easier
CALF VIGOUR (UNITS)	- Vigorous	1	<div></div>	1.73	+ Vigorous
CALF QUALITY (%)	Poorer	80	<div></div>	100.0	Excellent
BIRTH WEIGHT (KG)	Lighter	0	<div></div>	0.24	Heavier

LATEST PROGENY PICTURES



LATEST PROGENY PICTURES



ERKI

Sire: Tsigane MGS: Novotel Ear Tag: FR4241588187 AI Code: CH4052



Erki progeny have exceptional growth and remarkable conformation. Use on Dairy cows will produce calves that grow quickly and develop good conformation.

**NOT FOR
PEDIGREE USE**

UDEFIX

Sire: Fanfan MGS: Sol Ear Tag: FR2539551025 AI Code: CH4051



Udefix produces easily born progeny of good quality and display muscle development from an early age.

**NOT FOR
PEDIGREE USE**



£23.78

£49.69

£25.91

EMI — **CBI** — MVI

Whitecliffe JAMES

Sire: Blelack Digger Dam: Whitecliffe Emma Ear Tag: UK122919200650 AI Code: CH4130

GESTATION LENGTH (D)	Longer	285	283	Shorter
CALVING EASE (%)	Harder	92	95.0	Easier
CALF VIGOUR (UNITS)	- Vigorous	1	1.34	+ Vigorous
CALF QUALITY (%)	Poorer	80	95.0	Excellent
BIRTH WEIGHT (KG)	Lighter	0	1.46	Heavier

THE PERFECT CHAROLAIS BULL TO USE ON DAIRY COWS

James is sired by one of the easy calving greats 'Blelack Digger' and is predicted to provide easily born progeny with good muscle development. Preliminary data suggests he will carry short gestation credentials.



Male
Sexed **ULTRA 4M**
Available



£29.87

£39.50

£9.63

EMI — CBI — MVI

Netherhall 1 OZ DAFFY M024

Sire: Netherhall Daffy Dam: Wirruna Last Day E163 Ear Tag: UK103719 202024 AI Code: H9375

GESTATION LENGTH (D)	Longer	285	285	Shorter
CALVING EASE (%)	Harder	92	99.0	Easier
CALF VIGOUR (UNITS)	- Vigorous	1	1.17	+ Vigorous
CALF QUALITY (%)	Poorer	80	86.2	Excellent
BIRTH WEIGHT (KG)	Lighter	0	-1.15	Heavier

LATEST PROGENY PICTURES



NEW

Netherhall 1 JACK P602

Sire: Wirruna Jack J12 Dam: Netherhall 1 OZ Tigress M018 Ear Tag: UK103719 602602 AI Code: H9322



UNDER SURVEY

Jack carries breed leading EBV's with both Eye Muscle Area and Retail Beef Yield ranking in the top 1%. He also has a Calving Ease Direct figure of +4.5 placing him in the top 5% of the breed. These exciting Australian genetics will deliver the much sort after calving ease without sacrificing any calf quality. Expect low birth weights with short gestation lengths.

GOULDINGPOLL 1 GOLD SPICE

Sire: Panmure 1 Henry Dam: Barwise 1 Rambling Rosie 2267 Ear tag: IE191198930827 AI Code: H9333



UNDER SURVEY

Gold Spice carries a 5 star ranking for both Terminal and Maternal breeding values on the ICBF system. We expect him to provide progeny that are easy calving and of exceptional quality.

NEW



Male
Sexed **ULTRA 4M**
Available



£7.48

£28.62

£21.14

EARLY LACTATION ONLY

EMI — **CBI** — MVI

Tomschoice **JET**

Sire: Kaprico Eravelle Dam: Tomschoice Diamante Ear Tag: UK124148 100307 AI Code: LN2561

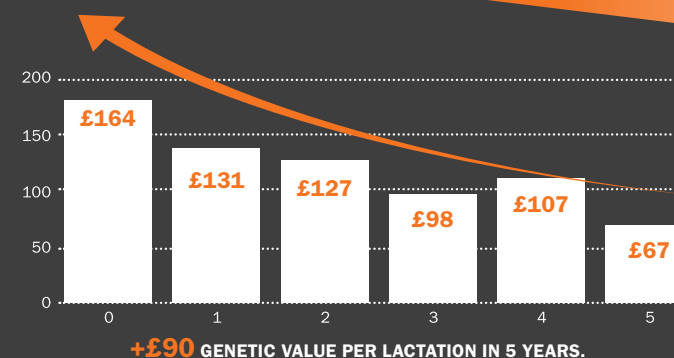
GESTATION LENGTH (D)	Longer	285	287	Shorter
CALVING EASE (%)	Harder	92	97.4	Easier
CALF VIGOUR (UNITS)	- Vigorous	1	1.57	+ Vigorous
CALF QUALITY (%)	Poorer	80	95.0	Excellent
BIRTH WEIGHT (KG)	Lighter	0	1.00	Heavier

LATEST PROGENY PICTURES



0.89 ppl

Additional income.



Utilising Cogent's Ultimate Breeding Strategy has led to significant financial gains for farmers like Trevor Lloyd.

By using this strategy, and supported by our world renowned genetics, our industry leading Sexed **ULTRA 4M**, coupled with our Precision **DNA** and Beef **IMPACT**, we believe that you can unlock the full profitability of your herd.

“

GENOMICS IS EXCITING AND GROUND BREAKING. I THINK IT'S THE NEXT BEST THING SINCE AI. IT REALLY HAS THE POTENTIAL TO INTENSIFY YOUR SELECTION.

TREVOR LLOYD
TY MAWR, ANGLESEY

TO READ MORE SUCCESS STORIES AND TO SEE HOW WE CAN HELP YOU, PLEASE VISIT:

COGENTUK.COM



BE PROFITABLE. BE COGENT

COGENT BEEF VISIONS

Beef Visions is Cogent's pioneering progeny testing programme. Aimed specifically at producing beef from the dairy industry and involves the participation of around UK farmers who purchase and test the semen and return calving survey data back to the company. With incentives offered to the producers for the collection of data, Cogent rapidly forms a profile of each sire, and calculates indexes to identify specific strengths. The programme gives customers the confidence to select proven beef genetics and save money with reduced calving difficulties and by adding value to beef calves.



MELVIEW GRAND TIMING^{T285}

ABERDEEN ANGUS

ROYALTY



Sire: Tofts Time On N110 Dam: Tegsnose Geraldine C095
MGS: Rawburn Transformer Ear Tag: UK311688100285 AI Code: AA1586



- This bull carries a pedigree that suggests exceptional calving ease with heavily proven sires on both sides. He has a Calving Ease figure of +6.3 ranking him in the top 1% of the breed
- We expect this bull to provide exceptional calving ease with short gestations and low birth weights

KELOWNA LUCAS

BRITISH BLUE

NOT FOR PEDIGREE USE



Sire: Maidenlands Force Dam: Kelowna Grace
MGS: Gregmaur Whillie Ear Tag: UK102530401160 AI Code: BB1540



- Sired by Maidenlands Force, Lucas is expected to follow in his fathers' footsteps and provide progeny with exceptional quality
- Lucas is expected to produce consistently blue-roan calves

MELVIEW GREGOR^{T271}

ABERDEEN ANGUS

ROYALTY



Sire: Melview Granville L076 Dam: Melview Gemma N149
MGS: Nightingale Red Piper H446 Ear Tag: UK311688 100271 AI Code: AA1587



- Gregor is a bull that offers breed leading calving ease with a Calving Ease Direct figure of +3.0 ranking him in the top 10% of the breed. He also carries a Terminal Index of +47 ranking him in the top 5% of the breed
- Gregor is predicted to provide an easily born calf that will grow quickly from a young age

SILVERWOOD MAINMAN

BRITISH BLUE

NOT FOR PEDIGREE USE



Sire: Auchenlay Hitman Dam: Grangeford Hazel
MGS: Rutabaga Beauffaux Ear Tag: UK942210313797 AI Code: BB1621



- Sired by our number one sire Auchenlay Hitman, Mainman is predicted to produce a very marketable calf of great quality
- Mainman is expected to produce progeny of an average birth weight that grow and develop quickly

THE TRAIT LEADERS

The Cogent Beef sires that feature in these trait leader tables are Proven bulls that have been ranked according to their EMI, MVI, calving ease and gestation length scoring. These rankings are highlighted to enable you to make comparisons between bulls and to allow you to select the most suitable beef genetics for your herd.

NATIVE EASE OF MANAGEMENT IMPACT (£EMI)



1	QUAKER HILL DEAD CENTER	80.24
2	LINTON GILBERTINES PREACHER	72.96
3	LINTON GILBERTINES DUBLINER	72.76
4	WEETON PANTHER	70.41

NATIVE MARKET VALUE IMPACT (£MVI)



1	LINTON GILBERTINES DUBLINER	23.25
2	LINTON GILBERTINES PREACHER	20.68
3	MELVIEW GET ITON	20.50
4	THOMAS TOUR OF DUTY	20.47

NATIVE GESTATION LENGTH



1	QUAKER HILL DEAD CENTER	278
2	LINTON GILBERTINES PREACHER	278
3	LINTON GILBERTINES DUBLINER	278
4	WEETON PANTHER	279

NATIVE CALVING EASE



1	QUAKER HILL DEAD CENTER	99.9
2	LINTON GILBERTINES PREACHER	99.0
3	WEETON PANTHER	99.0
4	OAKCHURCH DE ADMIRAL	98.6

CONTINENTAL EASE OF MANAGEMENT IMPACT (£EMI)



1	KERSEY LINCHPIN	89.63
2	CRACKLEY BANK LORD	86.02
3	KERSEY KARATE	59.76
4	KERSEY KINGPIN	57.19

CONTINENTAL MARKET VALUE IMPACT (£MVI)



1	AUCHENLAY HITMAN	30.07
2	TANAT JACK DANIELS	28.38
3	MAIDENLANDS FORCE	25.80
4	GRAYMAR KA CHING	24.21

CONTINENTAL GESTATION LENGTH



1	KERSEY LINCHPIN	277
2	CRACKLEY BANK LORD	277
3	KERSEY KINGPIN	279
4	SPRINGHILL IMPROVEMENT	280

CONTINENTAL CALVING EASE



1	KERSEY LINCHPIN	99.0
2	AUCHENLAY JUDGE	99.0
3	KERSEY KARATE	99.1
4	CRACKLEY BANK LORD	98.9



Registering all sires on **BCMS** helps us to provide more data on the sires you choose.

TAKING OUR INDUSTRY HIGHER WITH **AHDB**

#SHOUTABOUTTHESIRE



TRIPLE IMPACT ANGUS

Is aimed at customers wanting to capitalise on live vigorous Aberdeen Angus calves born without assistance.

Fertility enhancing semen that features three bulls with variations in maturation rates.

This product has been created for the UK Dairy farmer and will provide our customers with consistent calving ease.

Quality calves, that are easily born with short gestation lengths.



www.cogentuk.com



TRIPLE IMPACT EMI

COGENT EASE OF MANAGEMENT mix (£EMI) is aimed at customers wanting to capitalise on live and vigorous calves born without assistance.

Fertility enhancing semen that features three bulls with variations in semen maturation rates.

All bulls featured in this Triple Impact mix score above £40 on the EMI value.

Selecting Cogent Beef sires ranking highly for £EMI gives dairy cows the best chance to have a profitable lactation.

Provides consistent quality calves that are easily managed and full of vitality.



www.cogentuk.com



TRIPLE IMPACT ANGUS SUPER EASY

COGENT EASE OF MANAGEMENT mix (£EMI) is aimed at customers wanting to capitalise on live and vigorous calves born without assistance.

Fertility enhancing semen that features three bulls with variations in semen maturation rates.

All bulls featured in this Triple Impact mix score above £40 on the EMI value.

Selecting Cogent Beef sires ranking highly for £EMI gives dairy cows the best chance to have a profitable lactation.

Provides consistent quality calves that are easily managed and full of vitality.



www.cogentuk.com

NORTH TEAM

Ian Plews Regional Sales Manager	07855 506136
Alan Robson	07554 401234
Andrew Howie	07977 281073
John Howie	07977 281074
Jenny Murtagh-Hunt	07736 291226
Richard Lapthorne	07794 657040
Michael Stobbart	07889 807969

CENTRAL TEAM

Andy Hales Regional Sales Manager	07818 573379
David Heath	07791 045427
Jemma Dunkerley	07710 093064
Sara Etell	07711 590979
Robert Davies	07939 333141
Glyn Williams	07866 126072

NORTHERN IRELAND

Ashley Fleming Regional Sales Manager	07775 561823
Adrian McPhillips	07919 553968
Edwin Black	07710 968305
Stephen Shanks	07972 704738
Jamie Sproule	07827 304010
Paul Murtagh	07775 935221

COGENT PRECISION MATCH EVALUATORS

Christina Straathof - North	07989 219683
Amy Hall Brown - South	07718 210066
Katie Evans - South	07827 893365
Kevin Rickard - Wales	07800 534621
Jamie Sproule - N. Ireland	07827 304010

SOUTH TEAM

Graham Higgott Regional Sales Manager	07787 283117
Chris Horton	07813723677
David Willcox	07827 243249
Lisa Hopwood	07772 976935
Martin Ley	07818 573481
Amanda Clements	07711 593941
Mike Potter	07772 202045
Sarah Robertson	07519 120676
Frankie Connelly	07531 244135

COGENT CYMRU

Graham Higgott Regional Sales Manager	07787 283117
Cogent Cymru Office Vikki Parfitt	01495 753555
Sian Jones	07972 534303
Kevin Rickard	07800 534621
John Williams	07817 232373
Will Tucker	07719 511721

INTERNAL SALES

Jane Winters Internal Sales Manager	01829 773435
Catherine Perelli	01829 773425
Carla Madeley	01829 773421
Deborah Francis	01829 773426
Emma Fleming	01829 773493
Hannah McTiernan	01829 773420
Jodie Lumsden	01829 773422

COGENT PRECISION SERVICES

Gary Pleavin Precision Operations Manager	07841 340361
Michael Jones Precision Technical Manager	07584 238635

FREEPHONE: 0800 783 7258

Are you missing out?



30%

SexedULTRA 4M⁵
Genetic Elite

20%

SexedULTRA 4M⁵ BEEF
90%+ Male calves

50%

Cogent BEEFIMPACT
Maximise preg rate / calf value

Are you confident you are using the right genetics, in the right areas, to maximise the profit in your calves?

The Cogent Ultimate Breeding strategy has been designed to make full use of and derive profit from every pregnancy you achieve on farm.

By using this strategy, and supported by our world renowned genetics and our industry leading SexedULTRA 4M, we believe that you can deliver the full profitability of your herd.

Contact your local Sales Representative to find out how we can help impact your genetics and maximise profit per pregnancy.

THE ULTIMATE BREEDING STRATEGY.



www.cogentuk.com